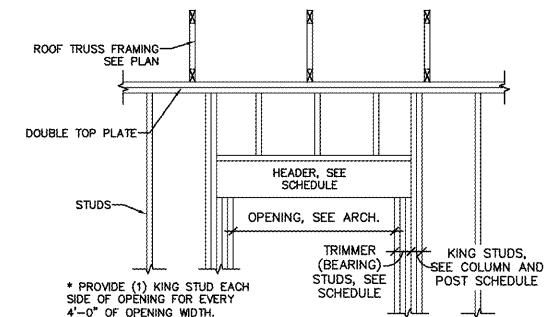
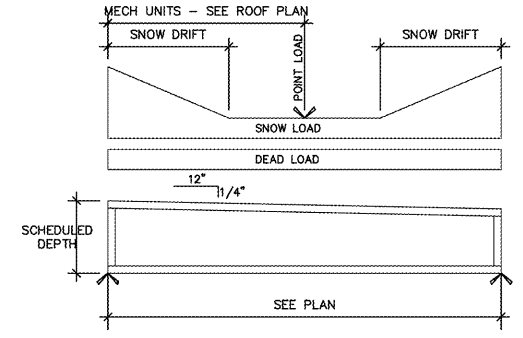


2 TYP. ROOF NAILING PATTERN
 SCALE: NONE



3 TYP. HEADER DETAIL
 SCALE: NONE



4 TRUSS LOADING DIAGRAM
 SCALE: NONE

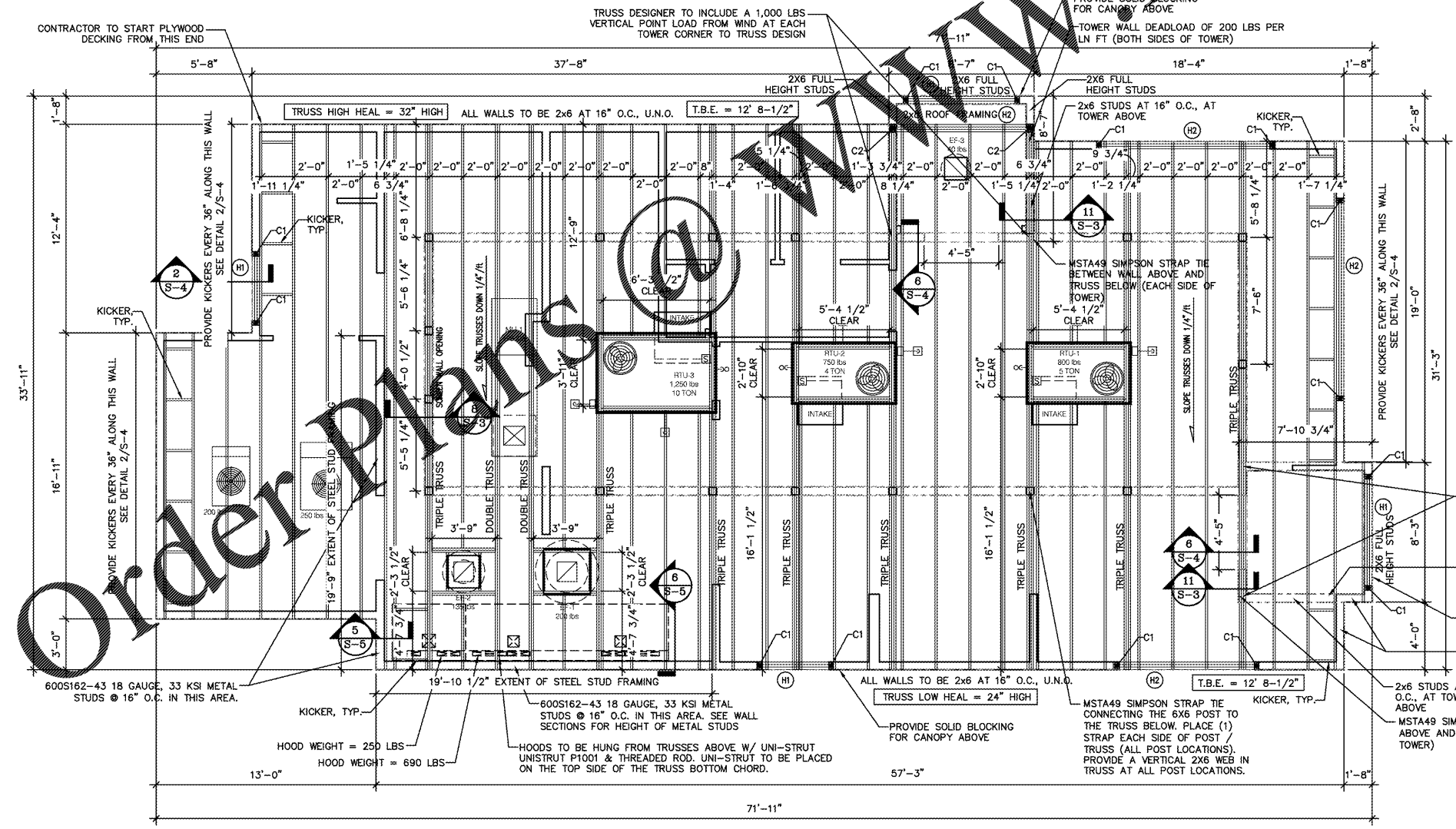
- ROOF FRAMING NOTES:
- REFER TO RESPONSIBILITY MATRIX ON SHEET T-1.1 FOR INFORMATION ON ROOF CURB FOR MAKE-UP AIR UNIT. SEE ARCH DRAWINGS FOR CURB FLASHING & ANCHORAGE REQUIREMENTS.
 - REFER TO RESPONSIBILITY MATRIX ON SHEET T-1.1 FOR INFORMATION ON ROOF CURBS FOR ROOF TOP UNITS. SHIM CURBS AS REQUIRED TO MATCH ROOF SLOPE.
 - REFER TO RESPONSIBILITY MATRIX ON SHEET T-1.1 FOR INFORMATION ON ROOF CURBS FOR EXHAUST FANS EF-1 THRU EF-3.
 - PLYWOOD ROOF DECKING TO BE 1/2" APA 40/20 PLYWOOD, NAIL @ 6" O.C. @ PERIMETER WALLS, 6" O.C. @ ALL OTHER PANEL EDGES & 12" O.C. ON ALL OTHER ROOF TRUSSES (PANEL FIELD NAILING).
 - END PLYWOOD ROOF DECK PANELS TO BE TRIMMED TO ENSURE THAT PANEL JOINTS OCCUR CENTERED OVER TRUSS FRAMING. NO PANEL MAY BE SHORTER THAN 36".
 - ROOF DECK NAILS SHALL BE 10d COMMON WIRE NAILS (0.148").
 - ALL EXTERIOR WOOD WALLS ARE SHEAR WALLS. SEE DETAILS FOR SHEAR WALL NAILING PATTERN.
 - ROOF FRAMING MEMBERS ARE TO BE ENGINEERED TRUSSES. MAX. SPACING 2'-0" O.C. ARCHITECT AND ENGINEER TO RECEIVE TRUSS SHOP DRAWINGS PRIOR TO FABRICATION.
 - SEE DETAIL 7/5-3 FOR HEADER ABOVE DOOR AND WINDOW OPENINGS AS REQUIRED.
 - SEE DETAIL 5/5-4 FOR ROOF CURB ATTACHMENT AS REQUIRED.

- VERIFY ALL DETAILS AND DIMENSIONS WITH ARCHITECTURAL DRAWINGS.
- ROOF STRUCTURE IS TO BE OPEN WEB ROOF TRUSSES, SEE WALL SECTIONS AND ROOF FRAMING PLAN FOR HEAL HEIGHTS.
- REFER TO ARCHITECTURAL & FRAMING PLAN FOR TRUSS BEARING ELEVATIONS (T.B.E.), ELEVATION OF FRAMING AT CANOPIES AND EYEBROWS.
- MARK THIS: "H" INDICATES HEADER OVER OPENING, REFER TO HEADER SCHEDULE.
- MARK THIS: "C" INDICATES COLUMN, REFER TO COLUMN SCHEDULE.
- ROOF FRAMING SHALL BE DESIGNED FOR ADDITIONAL SNOW LOAD AND DRIFTING AND THE WEIGHT OF MECHANICAL EQUIPMENT. VERIFY EQUIPMENT WEIGHT, LOCATION, AND DIMENSIONS WITH THE EQUIPMENT SUPPLIERS PRIOR TO FINAL DESIGN. REFER TO NOTES FOR ADDITIONAL INFORMATION.
- ALL DIMENSIONS ARE TO OUTSIDE FACE OF STUD WALL / STUD FACE / END OF TRUSS UNLESS NOTED OTHERWISE.

HEADER SCHEDULE		
MARK	HEADER SIZE	MIN. BEARING
(H1)	(3) 2x12 W/ 1/2" PLYWOOD BETWEEN LAMINATIONS	3" BEARING
(H2)	(3) 1 3/4 X 11-7/8" MICROLAM 1.9E	4.5" BEARING

COLUMN/POST SCHEDULE		
MARK	SIZE	COMMENTS
(C1)	(2) 2x6	(2) 2x TRIMMER STUD, SEE NOTE 2 FOR REQUIRED KING STUDS
(C2)	(2) 2x6	(3) 2x TRIMMER STUD, SEE NOTE 2 FOR REQUIRED KING STUDS

- NOTES:
- SEE 3/5-2 FOR TYPICAL HEADER FRAMING
 - PROVIDE (1) KING STUD EACH END FOR EVERY 4'-0" OF OPENING WIDTH



1 ROOF FRAMING PLAN
 SCALE: 1/4" = 1'-0"

AT TRUSS BEARING LOCATIONS, THE CONTRACTOR IS TO CONNECT THE DOUBLE TOP PLATE TO THE WOOD TRUSS ABOVE WITH A SIMPSON STRONG-TIE H2.5A, TYP.

IT IS THE CONTRACTORS OPTION TO BUILD THE VERTICAL LEG OF THE PARAPET WALL INTO THE TRUSS HEAL. IF NOT SELECTED, THE CONTRACTOR IS TO SISTER A 2X6 WOOD STUD AT EVERY TRUSS HEAL. THE 2X6 SHALL OVERLAP THE ENTIRE HEIGHT OF THE TRUSS HEAL.

VERIFY EXACT PLACEMENT OF HOOD EXHAUST DUCT PRIOR TO SETTING TRUSSES. ADJUST TRUSS SPACING AS NEEDED. NO HOOD DUCT OFFSETS ARE ALLOWED. COORDINATE EXACT DIMENSIONS WITH HOOD SUPPLIER

ALL EXTERIOR OVERALL DIMENSIONS SHOWN ARE FROM EXTERIOR FACE OF STUD TO EXTERIOR FACE OF STUD.

NOTE: ARCHITECT & ENGINEER IS TO RECEIVE / REVIEW / APPROVE TRUSS SHOP DRAWINGS PRIOR TO FABRICATION.

NOTE: VERIFY ROUGH OPENING WITH ROOF TOP UNIT SUPPLIER PRIOR TO TRUSS FABRICATION.

NOTE: PROVIDE TRIPLE 2X6 STUD COLUMNS AT TRIPLE TRUSS BEARING LOCATIONS. PROVIDE DOUBLE 2X6 STUD COLUMNS AT DOUBLE TRUSS BEARING LOCATIONS.

TRUSS DESIGNER TO INCLUDE A 1,000 LBS VERTICAL POINT LOAD FROM WIND AT EACH TOWER CORNER TO TRUSS DESIGN

TOWER WALL DEADLOAD OF 200 LBS PER LN FT (BOTH SIDES OF TOWER)

PROVIDE SOLID BLOCKING FOR CANOPY ABOVE

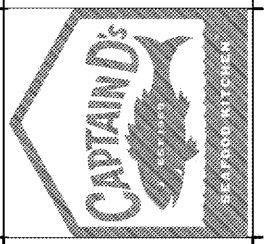
ALL WALLS TO BE 2x6 AT 16" O.C., U.N.O.

2x6 STUDS AT 16" O.C., AT TOWER ABOVE

MSTA49 SIMPSON STRAP TIE BETWEEN WALL ABOVE AND TRUSS BELOW (EACH SIDE OF TOWER)



A NEW LOCATION FOR
CAPTAIN D'S
 7525 STATE AVENUE
 KANSAS CITY, KS 66112
CAPTAIN D'S, LLC
 624 GRASSMERE PARK DRIVE,
 SUITE 30
 NASHVILLE, TN 37211



Job Number: _____
 Revisions:

S-2
 ROOF FRAMING PLAN