

SEDIMENT AND EROSION CONTROL NOTES:

ALL SEDIMENT AND EROSION CONTROL PRACTICES SHALL BE IN COMPLIANCE WITH CITY OF KANSAS CITY, WYANDOTTE COUNTY, KANSAS AND THE KANSAS DEPARTMENT OF HEALTH AND ENVIRONMENT.

APPROVAL OF THIS EROSION AND SEDIMENTATION CONTROL (ESC) PLAN DOES NOT CONSTITUTE AN APPROVAL OF PERMANENT ROAD OR DRAINAGE DESIGN.

THE IMPLEMENTATION OF THESE ESC PLANS AND THE CONSTRUCTION, MAINTENANCE, REPLACEMENT, AND UPGRADING OF THESE ESC FACILITIES IS THE RESPONSIBILITY OF THE CONTRACTOR/ESC RESPONSIBLE PARTY UNTIL ALL CONSTRUCTION IS APPROVED. THE CONTRACTOR IS ALSO RESPONSIBLE FOR ALL EROSION AND SEDIMENT CONTROL PERMITTING.

THE BOUNDARIES OF THE CLEARING LIMITS SHOWN ON THIS PLAN SHALL BE CLEARLY FLAGGED BY SURVEY TAPE OR FENCING, PRIOR TO CONSTRUCTION. DURING THE CONSTRUCTION PERIOD, NO DISTURBANCE BEYOND THE CLEARING LIMITS SHALL BE PERMITTED. THE CLEARING LIMITS SHALL BE MAINTAINED BY THE CONTRACTOR/ESC RESPONSIBLE PARTY FOR THE DURATION OF THE CONSTRUCTION.

THE STABILIZED CONSTRUCTION ENTRANCE SHALL BE INSTALLED AT THE BEGINNING OF CONSTRUCTION AND MAINTAINED THROUGHOUT THE DURATION OF THE PROJECT. ADDITIONAL MEASURES, SUCH AS CONSTRUCTED WHEEL WASH SYSTEMS OR WASH PADS, MAY BE REQUIRED TO ENSURE THAT ALL PAVED AREAS ARE KEPT CLEAN AND THAT TRACK OUT TO ROAD RIGHT OF WAY DOES NOT OCCUR FOR THE DURATION OF THE PROJECT.

THE ESC FACILITIES SHOWN ON THIS PLAN MUST BE CONSTRUCTED PRIOR TO OR IN CONJUNCTION WITH ALL CLEARING AND GRADING SO AS TO ENSURE THAT THE TRANSPORT OF SEDIMENT TO SURFACE WATERS, DRAINAGE SYSTEMS, AND ADJACENT PROPERTIES IS MINIMIZED.

THE ESC FACILITIES SHOWN ON THIS PLAN ARE THE MINIMUM REQUIREMENTS FOR ANTICIPATED CONSTRUCTION ACTIVITIES. DURING THE CONSTRUCTION PERIOD, THESE ESC FACILITIES SHALL BE UPGRADED AS NEEDED FOR UNEXPECTED STORM EVENTS AND MODIFIED TO ACCOUNT FOR CHANGING SITE CONDITIONS.

THE ESC FACILITIES SHALL BE INSPECTED DAILY BY THE CONTRACTOR/ESC RESPONSIBLE PARTY AND MAINTAINED TO ENSURE CONTINUED PROPER FUNCTIONING. WRITTEN RECORDS SHALL BE KEPT OF WEEKLY REVIEW OF THE ESC FACILITIES.

ANY AREAS OF EXPOSED SOILS, INCLUDING ROADWAY EMBANKMENTS, THAT WILL NOT BE DISTURBED FOR TWO DAYS DURING WET SEASON OR SEVEN DAYS THE DRY SEASON SHALL BE IMMEDIATELY STABILIZED WITH THE APPROVED ESC COVER METHODS (SEEDING, MULCHING, ETC.)

ANY AREA NEEDING ESC MEASURES, NOT REQUIRING IMMEDIATE ATTENTION SHALL BE ADDRESSED WITHIN SEVEN DAYS.

THE ESC FACILITIES ON INACTIVE SITES SHALL BE INSPECTED AND MAINTAINED A MINIMUM OF ONCE A MONTH OR WITHIN 24 HOURS FOLLOWING A STORM EVENT.

ANY PERMANENT RETENTION/DETENTION FACILITY USED AS A TEMPORARY SETTLING BASIN SHALL BE MODIFIED WITH THE NECESSARY EROSION CONTROL MEASURES AND SHALL PROVIDE ADEQUATE STORAGE CAPACITY. IF THE PERMANENT FACILITY IS TO FUNCTION ULTIMATELY AS AN INFILTRATION SYSTEM, THE TEMPORARY FACILITY MUST BE ROUGH GRADED SO THAT THE BOTTOM AND SIDES ARE AT LEAST THREE FEET ABOVE THE FINAL GRADE OF THE PERMANENT FACILITY.

PRIOR TO THE BEGINNING OF THE WET SEASON, ALL DISTURBED AREAS SHALL BE REVIEWED TO IDENTIFY WHICH ONES CAN BE SEEDED IN PREPARATION FOR THE WINTER WEATHER. DISTURBED AREAS SHALL BE SEEDED WITHIN ONE WEEK OF THE BEGINNING OF THE WET SEASON. A SKETCH MAP OF THOSE AREAS TO BE SEEDED AND THOSE AREAS TO REMAIN UNCOVERED SHALL BE SUBMITTED TO THE ESC INSPECTOR FOR REVIEW.

EROSION CONTROL BLANKETS, SOIL BINDERS, OR HYDROSEEDING SHALL BE USED TO PREVENT SOIL EROSION. AREAS THAT ARE EXPOSED FOR 14 DAYS OR MORE ARE INACTIVE AND MUST BE COVERED. ALL OTHER AREAS SHALL BE PROTECTED AS REQUIRED TO PREVENT SOIL EROSION.

LAND DISTURBANCE NOTE:

THE TOTAL SITE DISTURBANCE FOR THIS DEVELOPMENT IS 0.1 ACRES. SINCE THIS IS AREA IS LESS THAN ONE (1.00) ACRE, A NOTICE OF INTENT (NOI), LAND DISTURBANCE PERMIT FROM THE KANSAS DEPARTMENT OF HEALTH AND ENVIRONMENTAL (KDHE) IS NOT REQUIRED. HOWEVER, THE CONTRACTOR IS STILL REQUIRED TO PROVIDE AND MAINTAIN EROSION AND SEDIMENT CONTROL MEASURES PER THE KDHE AND THE CITY OF KANSAS CITY.

EROSION AND SEDIMENT CONTROL BASIC PRACTICES:

PRESERVE AND PROTECT AREAS OF NATURAL VEGETATION. AREAS TO BE PRESERVED SHALL BE PROTECTED WITH SILT FENCING TO PREVENT DAMAGE FROM CONSTRUCTION OPERATIONS.

TAKE SPECIAL PRECAUTIONS TO PREVENT DAMAGE THAT COULD RESULT FROM DEVELOPMENT ACTIVITIES NEAR WATERCOURSES, LAKES, AND WETLANDS.

MINIMIZE THE EXTENT AND DURATION OF THE DEVELOPMENT AREA EXPOSED AT ONE TIME.

APPLY TEMPORARY EROSION CONTROL PRACTICES AS SOON AS POSSIBLE TO STABILIZE EXPOSED SOILS AND PREVENT ON-SITE DAMAGE.

INSTALL SEDIMENT BASINS OR TRAPS, FILTER BARRIERS, DIVERSIONS, AND PERIMETER CONTROL MEASURES PRIOR TO SITE CLEARING AND GRADING TO PROTECT THE DISTURBED AREA FROM OFF-SITE AND ON-SITE RUNOFF AND TO PREVENT SEDIMENT TRANSPORT TO AREAS DOWNSTREAM OF THE DEVELOPMENT SITE.

KEEP RUNOFF VELOCITIES LOW, AND RETAIN RUNOFF ON SITE AS MUCH AS POSSIBLE.

PROVIDE MEASURES TO PREVENT SEDIMENT FROM BEING TRACKED ONTO PUBLIC OR PRIVATE ROADWAYS.

IMPLEMENT FINAL GRADING AND INSTALL PERMANENT VEGETATION ON DISTURBED AREAS AS SOON AS POSSIBLE.

SITE AND BEST MANAGEMENT PRACTICE (BMPs) INSPECTIONS MUST BE COMPLETED WEEKLY, OR AFTER EACH STORM EVENT RESULTING IN MORE THAN 0.5 INCH OF RAINFALL. THE PURPOSE OF THE INSPECTIONS IS TO ASSESS AND DETERMINE WHETHER THE SOIL EROSION AND SEDIMENT CONTROL MEASURES IDENTIFIED IN THE EROSION CONTROL PLAN ARE OPERATING PROPERLY AND EFFECTIVELY, AND TO INITIATE MAINTENANCE AS NEEDED. INSPECTIONS SHOULD INCLUDE A VISUAL OBSERVATION OF ALL DISTURBED AREAS OF THE REGULATED DEVELOPMENT, MATERIAL STORAGE AREAS, SEDIMENT AND EROSION CONTROL MEASURES, LOCATIONS WHERE VEHICLES ENTER AND EXIT THE SITE, AND ACCESSIBLE DISCHARGE POINTS/OUTFALLS.

INSPECTIONS SHOULD BE COMPLETED AND CONDUCTED BY QUALIFIED INSPECTORS WHO ARE FAMILIAR WITH THE EROSION CONTROL PLAN AND THE BMPs IMPLEMENTED AT THE SITE. IN GENERAL, IF INSPECTIONS INDICATE THAT A BMP IS NOT OPERATING PROPERLY, IT IS RECOMMENDED THAT MAINTENANCE AND MODIFICATION OF THE BMP BE PERFORMED AS SOON AS POSSIBLE AND BEFORE THE NEXT STORM EVENT WHENEVER PRACTICABLE AND NO LATER THAN SEVEN (7) CALENDAR DAYS FROM THE INSPECTION DATE. TO ENSURE ITS CONTINUED EFFECTIVENESS, MINIMUM MAINTENANCE STANDARDS FOR EACH SPECIFIC BMP ARE INCLUDED IN THE EROSION CONTROL PLAN.

THE REGULATED DEVELOPMENT MUST KEEP A COPY OF THE EROSION CONTROL PLAN ON SITE AT ALL TIMES DURING CONSTRUCTION AND MAKE THE PLAN AVAILABLE FOR REVIEW BY A FIELD REPRESENTATIVE UPON REQUEST.

EROSION AND SEDIMENTATION CONTROL

RECOMMENDED CONSTRUCTION SEQUENCE:

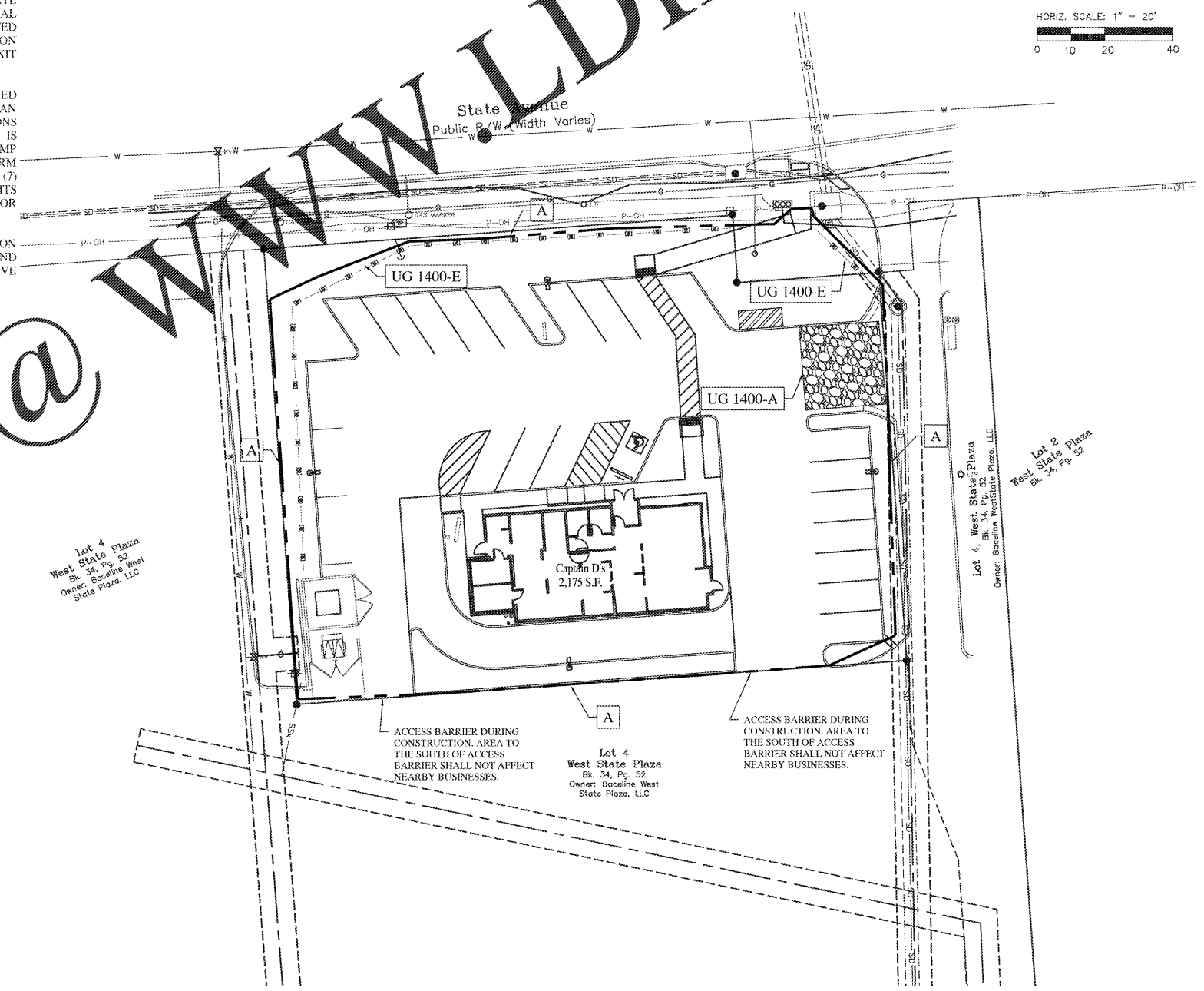
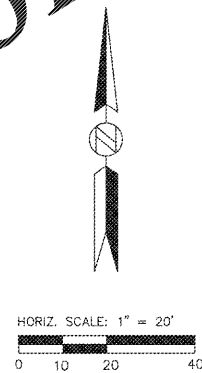
1. CONTRACTOR TO CONDUCT A PRE-CONSTRUCTION MEETING.
2. CONTRACTOR TO POST A SIGN WITH NAME AND PHONE NUMBER OF ESC RESPONSIBLE PARTY.
3. CONTRACTOR TO FLAG AND FENCE CLEARING LIMITS.
4. INSTALL CATCH BASIN PROTECTION, IF REQUIRED.
5. GRADE AND INSTALL CONSTRUCTION ENTRANCE(S).
6. CONTRACTOR TO INSTALL PERIMETER BARRIER, SILT FENCE, ETC.
7. CONSTRUCT SEDIMENT PONDS AND TRAPS, IF REQUIRED.
8. GRADE AND STABILIZE CONSTRUCTION ROADS.
9. CONSTRUCT SURFACE WATER CONTROLS (INTERCEPTOR DIKES, PIPE SLOPE DRAINS, ETC.) SIMULTANEOUSLY WITH CLEARING AND GRADING FOR PROJECT DEVELOPMENT.
10. MAINTAIN EROSION CONTROL MEASURES IN ACCORDANCE WITH APPLICABLE STANDARDS AND MANUFACTURERS RECOMMENDATIONS.
11. RELOCATED EROSION CONTROL MEASURES OR INSTALL NEW MEASURES AS SITE CONDITIONS CHANGE TO ENSURE THE SEDIMENT AND EROSION CONTROL IS ALWAYS IN ACCORDANCE WITH APPLICABLE STANDARDS.
12. COVER ALL AREAS THAT WILL NOT BE WORKED ON FOR MORE THAN SEVEN DAYS DURING THE DRY SEASON OR TWO DAYS DURING THE WET SEASON WITH STRAW, WOOD FIBER MULCH, COMPOST OR EQUIVALENT.
13. STABILIZE ALL AREAS THAT REACH FINAL GRADE WITHIN SEVEN DAYS.
14. SEED OF SOD ANY AREAS THAT WILL NOT BE WORKED ON FOR MORE THAN 30 DAYS.
15. UPON COMPLETION OF THE PROJECT, ALL DISTURBED AREAS MUST BE STABILIZED AND BMPs REMOVED IF APPROPRIATE.

EROSION AND SEDIMENT CONTROL KEY NOTES:

ALL EROSION CONTROL BMPs SHALL MEET THE STANDARD UG DRAWINGS AND DETAILS AVAILABLE IN THE LATEST EDITION OF THE TECHNICAL PROVISIONS & STANDARD DRAWINGS FOR ROADS AND SEWERS, OF THE UNIFIED GOVERNMENT OF WYANDOTTE COUNTY AND KANSAS CITY, KANSAS

EXCAVATED MATERIAL THAT IS NOT IMMEDIATELY LOADED AND HAULED OFF SITE SHALL BE STOCKPILED ON SITE. CONTRACTOR SHALL PROVIDE THE APPROPRIATE BMP (SILT FENCE, COMPOST SOCK, GRAVEL FILTER BAGS, WADDLES, ETC.) FULLY SURROUNDING THE STOCKPILE AREA TO PROTECT ADJACENT INLETS AND DOWNSTREAM AREAS, ETC., UNTIL SUCH TIME THAT STOCKPILE IS REMOVED FROM THE SITE.

GOOD HOUSEKEEPING, INCLUDING SPILL RESPONSE, SHALL BE PERFORMED IN ACCORDANCE WITH THE KANSAS CITY CHAPTER OF THE AMERICAN PUBLIC WORKS ASSOCIATION STANDARD SPECIFICATIONS SECTION 2150.



Order Plans @ WWW.LDILine.com

Architect:

 JOHN J. ODOM, ARCHITECT
 38 MEADOWBROOK COUNTRY CLUB ESTATES
 DALLAS, MISSISSIPPI 69111
 PH: 1-417-343-9802
 WWW.JJOARCHITECT.COM
 E-MAIL: JCHW@JJOARCHITECT.COM

Civil Engineer:

 REYLING DESIGN & CONSULTING
 4516 Boardwalk | Smithton, IL | 62285
 reylngdc@gmail.com

Kansas Firm License: E-2758
 KS Certificate of Authority: 5066014

LICENSE EXPIRES - 04.30.2021
 DATE SIGNED - 03.17.2020

ENGINEER OF RECORD:
 Todd J. Reyling, PE
 Kansas PE 25336

ISSUED / REVISED	DATE
ISSUED TO CLIENT	01.21.2020
REVISED PER CITY COMMENTS	02.14.2020
REVISED PER CITY COMMENTS	03.17.2020

PROJECT NUMBER: 19-159

New Ground Up Building:
Captain Ds
 7525 State Avenue
 Kansas City, KS 66112
 Wyandotte County

Sediment and
 Erosion Control
 Plan
C600

STREET SWEEPING NOTE:

CONTRACTOR SHALL SWEEP/REMOVE ALL SEDIMENT AND DEBRIS WITHIN THE ROADWAY AT THE END OF EACH DAY