

SANITARY SEWER KEY NOTES

- 1 PROPOSED 4" PVC SDR-26 GREASE SANITARY SEWER SERVICE TO BUILDING AT INVERT = 894.00 ±. SEE PLUMBING PLANS FOR CONNECTION INTO BUILDING.
- 2 PROPOSED 4" PVC SDR-26 SANITARY SEWER SERVICE TO BUILDING AT INVERT = 894.10 ±. SEE PLUMBING PLANS FOR CONNECTION INTO BUILDING.
- 3 PROPOSED SANITARY SEWER CLEANOUT. SEE DETAIL.
- 4 PROPOSED 25 LF OF 4" PVC SDR-26 GREASE SANITARY SEWER LATERAL AT 3.38% MINIMUM.
- 5 PROPOSED 34 LF OF 4" PVC SDR-26 SANITARY SEWER LATERAL AT 2.00%.
- 6 PROPOSED GREASE INTERCEPTOR. TOP ELEVATION 896.35. SEE PLUMBING PLANS FOR DETAILS.
- 7 PROPOSED 34 LF OF 4" PVC SDR-26 SANITARY SEWER LATERAL AT 2.00%.
- 8 PROPOSED 32 LF OF 4" PVC SDR-26 SANITARY SEWER LATERAL AT 4.18%.
- 9 CONTRACTOR TO VERIFY AND CONNECT TO EXISTING 4" PVC SDR-26 SANITARY SEWER SERVICE LINE AT 891.86±. CONTRACTOR TO COORDINATE WITH SANITARY SEWER DISTRICT FOR SERVICE AND CONNECTION.

WATER KEY NOTES

- 1 PROPOSED 1-1/4" DOMESTIC WATER SERVICE STUB INTO BUILDING. SEE PLUMBING PLANS FOR CONNECTION INTO BUILDING.
- 2 PROPOSED 1-1/4" DOMESTIC WATER LINE (FLEXIBLE TYPE "K" COPPER) TO BUILDING. MINIMUM BURY DEPTH 48" BELOW FINISHED GRADE.
- 3 PROPOSED 1-1/4" DOMESTIC WATER METER. CONTRACTOR TO COORDINATE INSTALLATION AND SERVICE WITH WATER COMPANY.
- 4 PROPOSED 1-1/4" DOMESTIC WATER SERVICE CONNECTION. CONTRACTOR TO COORDINATE INSTALLATION OF TAP AND SERVICE WITH WATER COMPANY.

DRY UTILITY KEY NOTES

- 1 PROPOSED ELECTRICAL SERVICE METER AND STUB TO BUILDING. SEE ELECTRICAL PLANS FOR CONNECTION INTO BUILDING.
- 2 PROPOSED ELECTRICAL SERVICE FROM NEW BUILDING TO PAD MOUNTED TRANSFORMER. CONTRACTOR TO COORDINATE WITH ELECTRIC COMPANY FOR SERVICE AND PLACEMENT.
- 3 PROPOSED ELECTRICAL SERVICE FROM PROPOSED TRANSFORMER TO EXISTING POWER SOURCE. CONTRACTOR TO COORDINATE WITH ELECTRIC COMPANY FOR SERVICE.
- 4 PROPOSED TELEPHONE AND DATA SERVICE STUB TO BUILDING.
- 5 PROPOSED TELEPHONE AND DATA SERVICE. CONTRACTOR TO COORDINATE WITH UTILITY COMPANY FOR SERVICE.
- 6 EXISTING DATA/COMMUNICATION CONNECTION. CONTRACTOR TO COORDINATE WITH UTILITY COMPANY FOR SERVICE.
- 7 PROPOSED GAS SERVICE METER AND STUB TO BUILDING. SEE MECHANICAL PLANS FOR CONNECTION INTO BUILDING.
- 8 PROPOSED GAS SERVICE FROM NEW BUILDING TO EXISTING GAS MAIN. CONTRACTOR TO COORDINATE WITH GAS COMPANY FOR SERVICE.
- 9 EXISTING GAS MAIN CONNECTION. CONTRACTOR TO COORDINATE/VERIFY WITH GAS COMPANY FOR PROPOSED LOCATION AND TAP.
- 10 PROPOSED SITE LIGHTING. SEE ELECTRICAL SITE LIGHTING PLAN FOR DETAILS.

NOTE:

ALL BUILDING POC SIZES AND LOCATIONS ARE FOR REFERENCE ONLY. CONTRACTOR TO CONSULT THE MECHANICAL, ELECTRICAL, AND PLUMBING ENGINEERS TO CONFIRM EXACT BUILDING SIZES AND LOCATIONS.

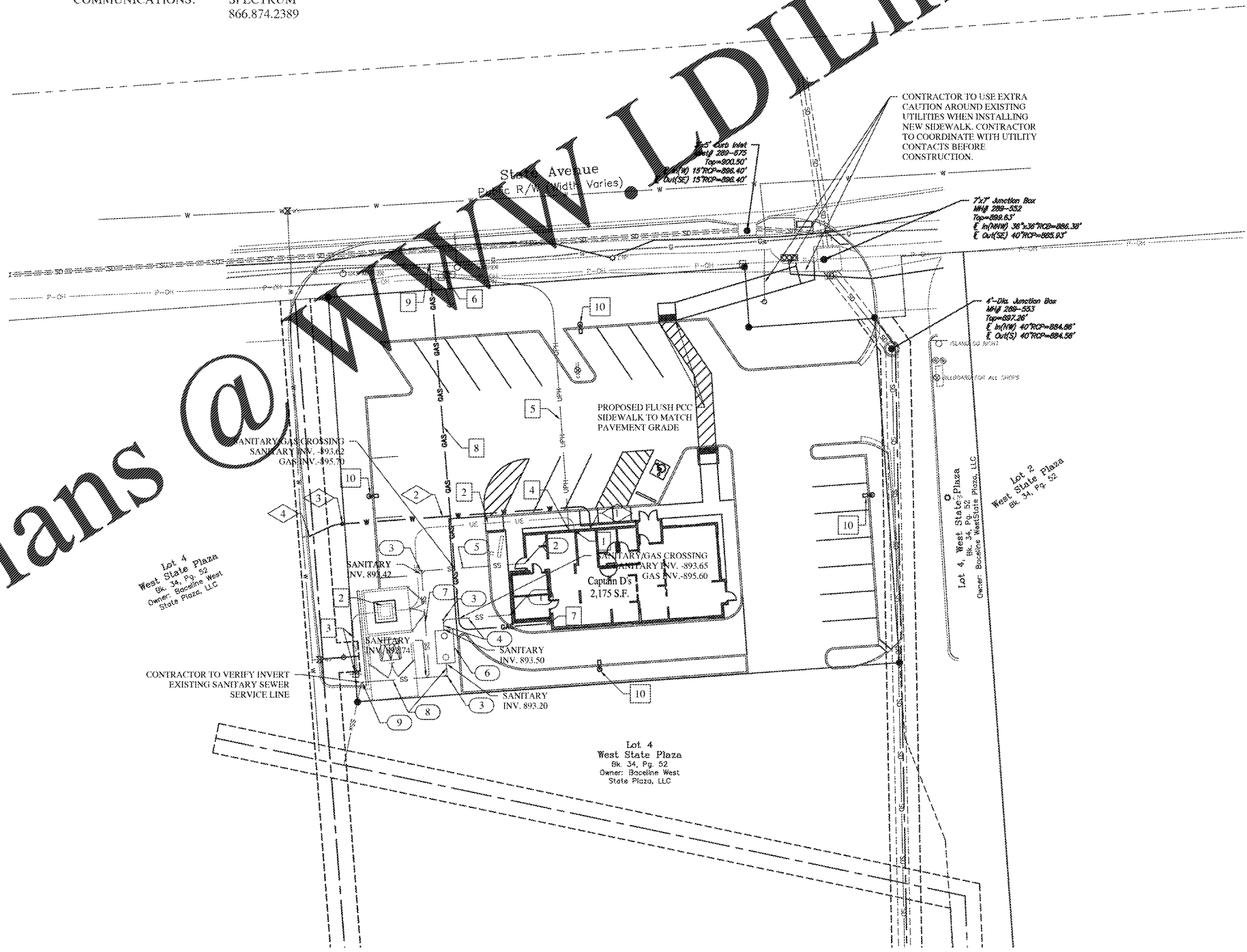
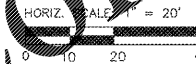
UTILITY CONTACTS

WATER:	KANSAS CITY WATER JENNY LI 913.573.9845
ELECTRIC:	KANSAS CITY ELECTRIC COURTNEY CONNER 913.573.9538
GAS:	ATMOS ENERGY RICHARD YUNGHANS 913.764.0531
SANITARY SEWER:	KANSAS CITY PUBLIC WORKS KEVIN SWEARENGIN KIRK ROLAND 913.573.1360
STORM SEWER:	KANSAS CITY PUBLIC WORKS KEVIN SWEARENGIN KIRK ROLAND 913.573.1360
COMMUNICATIONS:	SPECTRUM 866.874.2389



KANSAS UTILITY LOCATE SERVICES
PHONE: 316.687.2470 OR WWW.KANSASONECALL.COM

PROPOSED DETECTABLE WARNING (TRUNCATED DOMES) TO MEET ADA STANDARDS. SEE DETAIL. PROPOSED FLUSH PCC SIDEWALK TO PAVEMENT.



Order Plans @ WWW.LDILine.com

Architect:

 JOHN B. ODOM, ARCHITECT
 38 MEADOWCREST, COUNTRY CLUB ESTATES
 DALLAS, MISSISSIPPI 85911
 PH: 417.343.8825
 WWW.JODARCHITECT.COM
 E-MAIL: JCH@JSDARCHITECT.COM

Civil Engineer:

 REYLING DESIGN & CONSULTING
 4516 Boardwalk | Smithton, IL | 62285
 reylingdc@gmail.com

Kansas Firm License: E-2758
 KS Certificate of Authority: 5066014

 LICENSE EXPIRES - 04.30.2021
 DATE SIGNED - 03.17.2020

ENGINEER OF RECORD:
 Todd J. Reyling, PE
 Kansas PE 25336

ISSUED / REVISED	DATE
ISSUED TO CLIENT	01.21.2020
REVISED PER CITY COMMENTS	02.14.2020
REVISED PER CITY COMMENTS	03.17.2020

PROJECT NUMBER: 19-159

New Ground Up Building:
Captain Ds
 7525 State Avenue
 Kansas City, KS 66112
 Wyandotte County

Site Utility Plan
C500