

MARK	SIZE	DOOR	FRAME	FRAME DETAIL	QUANTITY											NOTES	
					BUTTS	STOP	THRESH	CLOSER	LOCKSET	WEATHER-STRIPPING	LOUVERS	PANIC	KICKPLATE	VIEWER	PUSH/PULL		HDWR. SET
①	3'-0" X 7'-0" (PAIR)	TYPE A	SF-1	9,10/A17	3 PR	1	1	1	1	1	-	-	-	-	-	-	2
②	3'-0" X 7'-0" (PAIR)	TYPE A	SF-1	9,10/A17	3 PR	1	NO	1	NO	NO	-	-	-	-	-	-	2
③	3'-0" X 6'-8"	TYPE C	HM-1	13,14/A17	1.5 PR	-	-	-	-	-	-	-	-	-	-	-	4
④	3'-0" X 7'-0"	TYPE A	SF-1	9,10/A17	1.5 PR	1	1	1	1	1	-	-	-	-	-	-	2
⑤	3'-0" X 7'-0"	TYPE A	SF-1	9,10/A17	1.5 PR	1	NO	1	NO	NO	-	-	-	-	-	-	2
⑥	3'-6" X 7'-0"	TYPE B	HM-1	11,12/A17	1.5 PR	1	1	1	1	1	-	1	2	1	-	-	1
⑦	3'-0" X 6'-8"	TYPE D	HM-1	13,14/A17	1.5 PR	1	-	1	-	-	-	-	2	-	1 EA.	-	3
⑧	3'-0" X 6'-8"	TYPE D	HM-1	13,14/A17	1.5 PR	1	-	1	-	-	-	-	2	-	1 EA.	-	3
⑨	3'-0" X 6'-8"	TYPE C	HM-1	13,14/A17	1.5 PR	-	-	-	-	-	-	-	-	-	-	-	6
⑩	3'-0" X 6'-8"	TYPE C	HM-1	13,14/A17	1.5 PR	-	-	-	-	-	-	-	-	-	-	-	4
⑪	2'-4" X 6'-8"	TYPE D	HM-1	13,14/A17	1.5 PR	1	-	1	1	-	-	-	2	-	1 EA.	-	5
⑫	3'-0" X 6'-8"	TYPE D	HM-1	13,14/A17	1.5 PR	1	-	1	1	-	-	-	2	-	1 EA.	-	5

1 DOOR SCHEDULE

A17 3"=1'-0"

HARDWARE SET NO. 1: (LOCKNET SERIES DOOR PACKAGE)

DOOR FRAME & HARDWARE INCLUDING VISION PANEL W/ FLAP, CONTINUOUS HINGE, HEAVY DUTY CLOSER AND PANIC HARDWARE ORDERED THROUGH LOCKNET (800) 887-4307

1 EA. 3'-0" X 7'-0" X 1.75" X 16 GA. X 0.60 GALVANIZED LOCKNET SECURITY DOOR
 1 EA. 3'-6" X 7'-0" X (5-7/8" OR 6-3/4") JAMB DEPTH X 14 GA. X 0.60 GALVANIZED COVER PLUS (BLACK)
 1 EA. AIR LOUVER VLF-IG-PVC-1/2" LEXAN - 9" X 9" GALVANIZED SECURITY VISION
 1 EA. PEMKO CDHFM2SLF-HD FULL MORTISE CONT. GEARED ALUM. HINGE X 628
 1 EA. SECURITY LATCH GUARD X FULL LENGTH X TORX SD/ST SMS X FACTORY FINISH
 1 EA. ARROW 12505 X EO X AL EXIT DEVICE
 1 EA. DORMA 6616 X DS X FCOV X SM1 X AL CLOSER
 1 EA. ROCKWOOD 24" X 40" X .050 X US32D X SECURITY TORX SD/ST SMS ARMOR PLATE ON PUSH SIDE
 1 EA. PEMKO 171A X 42" X DOUBLE NOTCH CUT ENDS X THRESHOLD
 1 EA. PEMKO 346C X 40" AL OVERHEAD RAIN DRIP X SECURITY TORX SD/ST SMS
 1 EA. PEMKO 221APK X 42" AL COMBINATION KICK PLAT & DOOR SHOE X TORX
 1 SET .PB512 X CONT. PERIMETER WEATHER SEAL (BLACK)
 1 EA. INSTALLATION KIT (PER LOCKNET)
 1 EA. CARDBOARD PACKAGING (2 PIECE BOX)
 1 EA. DELIVERED ON FULL LENGTH WOODEN PALLET

HARDWARE SET NO. 2: (BY YKK AP AMERICA INC.)

DOORS AND FRAMES

QTY	PART #	FINISH	MODEL	DESCRIPTION
1	4911DOR	YBSN	YKK AP #20D	3 X 7 OIP OFFSET PIVOTS, HBR RH
1	92115FR	YBSN	2" X 4-1/2"	6 X 7 OIP FRAME, WITRANSM. RH
1	49114DOP	YBSN	20D	6 X 7 OIP, OFFSET PIVOTS, HBR PR
1	92118FTP	YBSN	2" X 4-1/2"	6 X 7 OIP, FRAME, WITRANSM. PR
3	P61205	336		SM CLOSER W/BACK CHECK NHO PRES
3	H1104SD	336		PUSH/PULL 1" DAM TYPE SC (P/CTC)
3	H7107	YBSN	3-0	BOTTOM RAIL WEATHERSTRIP
3	SD101	YBSN		10" BOTTOM RAIL UP TO 3"
2	H4204 SD			THUMBTURNERS

STOCK LENGTHS

QTY	PART #	FINISH	LENGTH	DESCRIPTION
11	BE91503	YBSN	24-0	HEAD / JAMB / VERTICAL
3	BE91512	YBSN	24-0	SHALLOW POCKET FILLER
2	BE91506	YBSN	24-0	HORIZONTAL
2	BE91513	YBSN	24-0	4-1/2" SIDELITE BASE
4	BE91015	YBSN	24-0	GLASS STOP
2	BE91510	YBSN	24-0	SILL FLASHING

ACCESSORIES

QTY	PART #	LENGTH	PKG	DESCRIPTION
1	E20020		50PB	SETTING BLOCK
1	E20047		50PB	WATER DEFLECTOR
1	E20154		50PB	1" SIDE BLOCK FOR DEEP POCKET
1	E10168		20PB	END DAM
2	E20052		500PB	GLAZING GASKET
2	PC1220		100PB	#12 X 1-1/4" PHSMS TYPE AB
1	E11015		50PB	SHEAR BLOCK
1	PC1028		100PB	#10 X 1-3/4" PHSMS TYPE AB

HARDWARE SET NO. 3:

1-1/2 PR. HINGES MCKINNEY BEARING HINGES, 4-1/2" X 4-1/2" US29D
 1 EA. FLOOR STOP BALDWIN #4000 FLOOR MOUNT
 1 EA. KICKPLATE BURNS 8" X 30" X 1/8" 16GA. US22B
 1 EA. CLOSER LCN 1460 ALUMINUM CLOSER

FOLLOWING ITEMS PROVIDED & INSTALLED BY G.C.:

1 EA. SIGN HANDICAP ACCESSIBILITY (ADA)
 1 EA. SIGN AS REQ'D, DOOR #5 MEN "7" X 2" DOOR #6 WOMEN "7" X 2"

HARDWARE SET NO. 4:

1-1/2 PR. HINGES MCKINNEY BEARING HINGES, 4-1/2" X 4-1/2" US29D
 1 EA. KICKPLATE BURNS 8" X 30" X 1/8" 16GA. US22B
 1 EA. LATCHSET W/LOCK SCHLAGE SATURN X US29D
 1 EA. 6"x6" VIEWING WINDOW
 1 EA. CLOSER LCN 1460 ALUMINUM CLOSER

HARDWARE SET NO. 5:

1-1/2 PR. HINGES MCKINNEY BEARING HINGES, 4-1/2" X 4-1/2" US29D
 1 EA. LATCHSET W/LOCK SCHLAGE SATURN X US29D
 1 EA. FLOOR STOP BALDWIN #4000 FLOOR MOUNT
 1 EA. KICKPLATE BURNS 8" X 30" X 1/8" 16GA. US22B
 1 EA. CONT HOOK MCKINNEY #400 WITH RUBBER BUMPER
 1 EA. CLOSER LCN 1460 ALUMINUM CLOSER

HARDWARE SET NO. 6:

1-1/2 PR. HINGES MCKINNEY BEARING HINGES, 4-1/2" X 4-1/2" US29D
 1 EA. KICKPLATE BURNS 8" X 30" X 1/8" 16GA. US22B
 1 EA. LATCHSET W/LOCK SCHLAGE SATURN X US29D
 1 EA. 6"x6" VIEWING WINDOW

NOTES:

1. DOOR AND FRAME SHALL BE FULLY ASSEMBLED AND ALL HARDWARE SHALL BE INSTALLED BY SKILLED CRAFTSMEN AT THE FACTORY AND THE UNIT DELIVERED TO THE JOBSITE READY FOR INSTALLATION. THE DOOR, HARDWARE AND THE HARDWARE INSTALLATION SHALL CARRY A MANUFACTURER'S 14 MONTH WARRANTY W/ 24 HOUR SERVICE. (TOLL FREE NUMBER TO BE DISPLAYED ON DOOR)

2. H4101 FLUSH BOLT ON INACTIVE LEAF OF PAIR ONLY.

3. PROVIDE COMMERCIAL CLOSET DOOR HARDWARE KIT THAT WANT LOCK.

SPECIFICATIONS:

DIVISION 8: DOORS, WINDOWS AND GLASS

SECTION 8B: INTERIOR WOOD CORE DOORS AND FRAMES
 GENERAL PROVISIONS

1. SCOPE: FURNISH AND INSTALL ALL INTERIOR WOOD CORE DOORS AND RELATED ALUMINUM FRAMES. REFER TO NATIONAL ACCOUNT DIRECTORY.

MATERIALS

1. DOORS ARE WOOD CORE SOLID DOORS. SEE DOOR SCHEDULE FOR SIZE, MATERIAL, HARDWARE, AND FINISH. FRAMES SHALL BE HOLLOW METAL AND FINISHED PER FINISH SCHEDULE.

2. SEE HARDWARE SCHEDULE FOR HARDWARE AND MANUFACTURERS.

3. SEE SECTION 10A FOR TOILET STALL DOORS WHERE APPLICABLE.

PERFORMANCE

1. INSTALLATION: INSTALL IN ACCORDANCE WITH MANUFACTURER'S INSTRUCTIONS. CAULK AROUND ABUTTING EDGES WITH CLEAR SILICONE.

SECTION 8C: STEEL DOORS AND FRAMES

GENERAL PROVISIONS

1. SCOPE: THE GENERAL CONDITIONS, SUPPLEMENTARY CONDITIONS, AND APPLICABLE PORTIONS OF DIVISION I OF THE SPECIFICATIONS ARE PART OF THIS SECTION.

FURNISH AND INSTALL ALL STEEL DOORS AND FRAMES, COMPLETE WITH JAMB ANCHORS.

MATERIALS

1. DOORS AND FRAMES BY PIONEER INDUSTRIES, INC., STEELCRAFT, OR CECO.

DOOR FRAMES SHALL BE OF 16 GAUGE COLD ROLLED STEEL. THEY SHALL BE MITERED AND WELDED AT CORNERS. FRAMES SHALL BE FURNISHED FACTORY-PRIMED AND SHALL HAVE THREE (3) 1/8" TYPE JAMB ANCHORS FOR EACH SIDE OF EACH FRAME. CAULK AROUND ALL ABUTTING EDGES WITH CLEAR SILICONE.

DOORS SHALL BE CONSTRUCTED OF 1 1/2" THICK 18 GAUGE COLD ROLLED STEEL WITH VERTICAL SIFTERS FOR FOOT OVER 6" APART AND 4" AND 6" LONG SIFTERS FOR HORIZONTAL SIFTERS. JAMB ANCHORS SHALL BE AT LEAST 6" FROM BOTTOM RAIL WEATHERSTRIP. DOORS SHALL BE SOUND DEADENED BY FILLING WITH MINERAL WOOL INSULATION. THEY SHALL BE THOROUGHLY CLEANED OF GREASE AND OTHER IMPURITIES, FILLED FLUSH, AND GIVEN TWO (2) COATS OF BAKED-ON RESISTANT METALLIC PRIMER.

2. SEE HARDWARE SCHEDULE FOR HARDWARE AND MANUFACTURERS.

DOOR & HARDWARE NOTES

1. HARDWARE SUPPLIER TO VERIFY STATE/LOCAL HANDICAPPED REQUIREMENTS FOR EXIT HARDWARE.
- B. COMPLETE SUBMITTALS ARE REQUIRED FOR APPROVAL PRIOR TO ANY ORDERING OR WORK.
- C. ALL DOOR HARDWARE MUST HAVE A SHAPE THAT IS EASY TO GRASP WITH ONE HAND AND DOES NOT REQUIRE TIGHT GRASPING, TIGHT PINCHING, OR TWISTING OF THE WRIST TO OPERATE.
- D. IF PANIC HARDWARE IS REQUIRED BY CODE, G.C. TO FURNISH AND INCLUDE PRICE ON BID.
- E. SEAL BOTTOM OF WOOD DOORS.

STOREFRONT NOTES:

ALUMINUM STOREFRONT FRAME:
 BY YKK AP OF AMERICA. SYSTEM=YES 45 TU, 2" X 4-1/2" THERMAL SYSTEM FOR 1" INSULATED LOW "E" GLAZING.

DOORS:

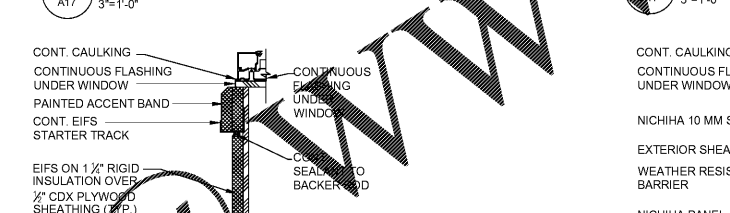
YKKAP 20D

2 DOOR ELEVATIONS

A17 3"=1'-0"

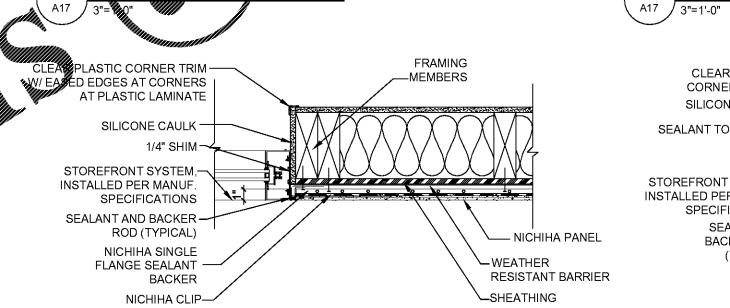
4 SECTION @ STOREFRONT HEAD

A17 3"=1'-0"



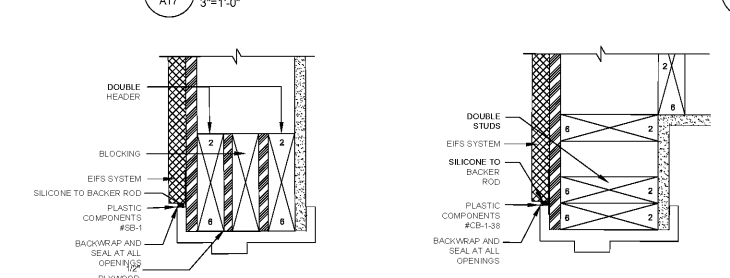
5 DETAIL @ SILL (EIFS)

A17 3"=1'-0"



6 JAMB DETAIL @ NICHIIHA PANELS

A17 3"=1'-0"



11 SECTION @ EXT. HEADER

A17 3"=1'-0"



12 JAMB @ EXT. HEADER

A17 3"=1'-0"

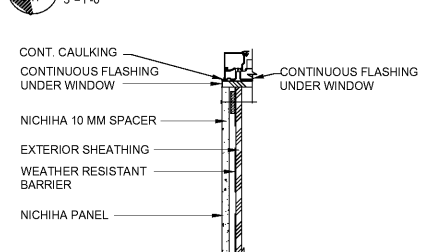


3 WINDOW ELEVATIONS

A17 3"=1'-0"

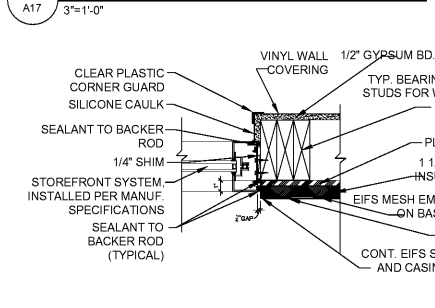
7 DRIVE THRU WINDOW SILL DETAIL

A17 3"=1'-0"



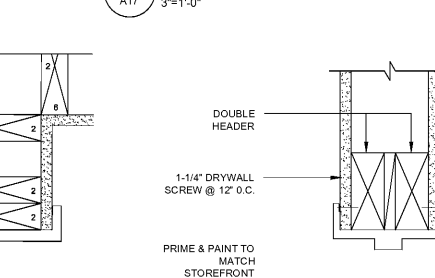
5A DETAIL @ SILL (NICHIIHA PANELS)

A17 3"=1'-0"



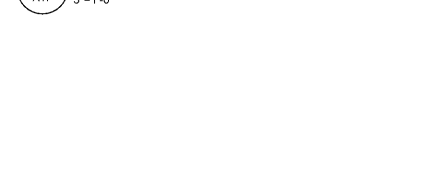
8 JAMB DETAIL @ EIFS

A17 3"=1'-0"



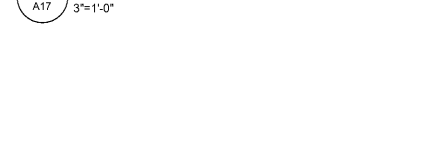
9 SECTION @ EXT. HEADER

A17 3"=1'-0"



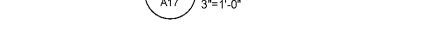
10 SECTION @ EXT. HEADER

A17 3"=1'-0"

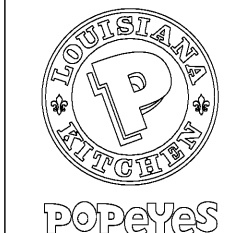


14 JAMB @ INT. HEADER

A17 3"=1'-0"



FRCH NELSON
 A NELSON BRAND
 311 Elm Street Suite 600
 Cincinnati OH 45202
 513.241.3000
 www.frchnelson.com



JPL MANAGEMENT

ISSUE INFORMATION

REVISIONS

Nelco Architecture, Inc.

PROJECT INFORMATION

BOWLING GREEN, KY

DISHMAN LANE
 BOWLING GREEN, KY 42101

PROJECT #:

20.0001760.000

SHEET INFORMATION

DOOR and WINDOW SCHEDULES, ELEVATIONS, DETAILS

AW
 DRAWN BY: JN
 REVIEWED BY:

SCALE:
 AU THORIZED FOR: Permit/Bid

A17