



**JPL MANAGEMENT**

ISSUE INFORMATION

REVISIONS

Nelco Architecture, Inc.

PROJECT INFORMATION

**BOWLING GREEN, KY**

DISHMAN LANE  
BOWLING GREEN, KY 42101

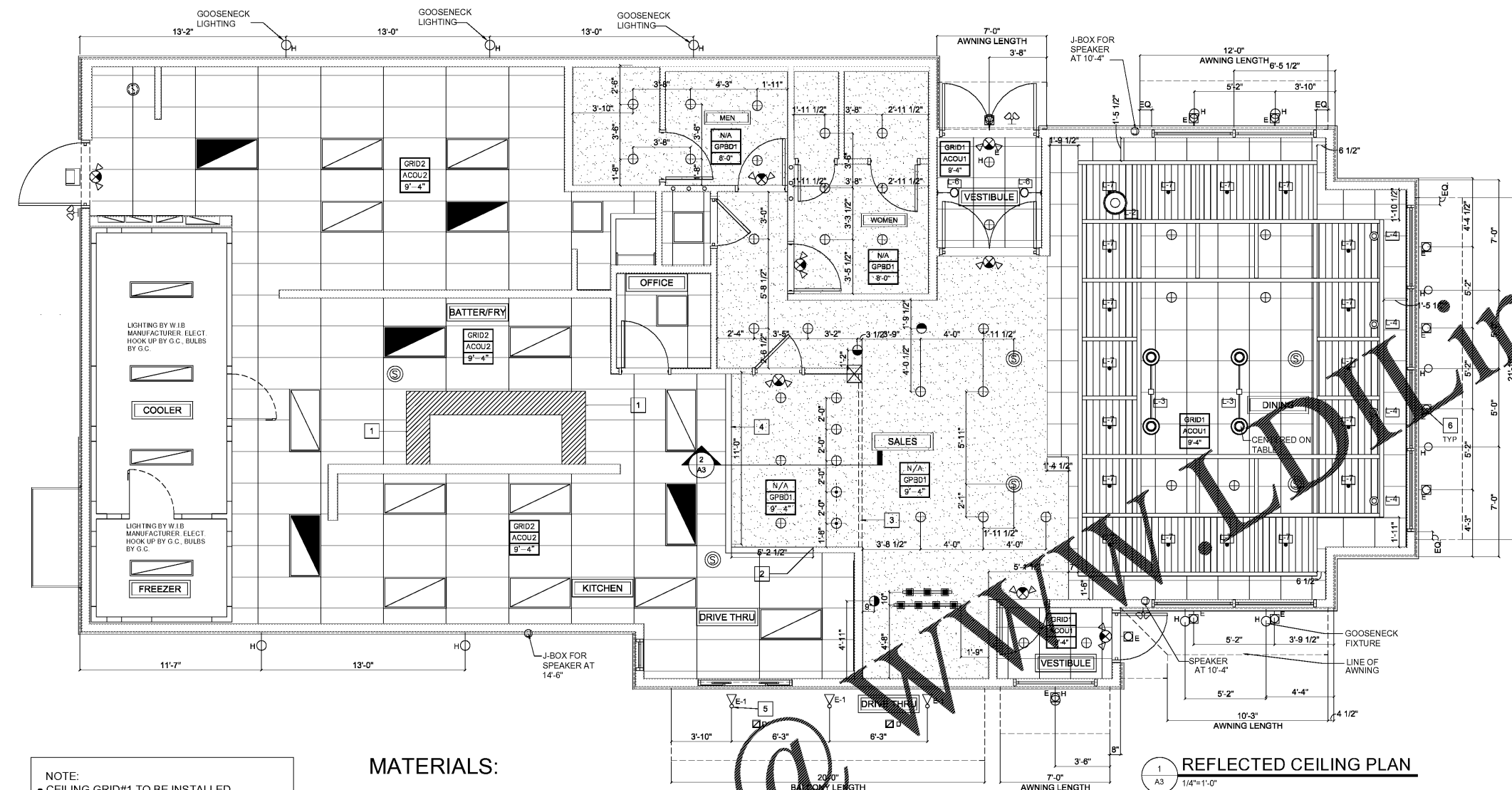
PROJECT #:  
20.0001760.000

SHEET INFORMATION

REFLECTED CEILING PLAN

DRAWN BY:  
AW  
REVIEWED BY:  
JN  
SCALE:

AUTHORIZED FOR:  
Permit/ Bid



**SYMBOL LEGEND:**

GRID1	GRID SPECIFICATION
ACOU1	TILE SPECIFICATION
9'-4"	CEILING HEIGHT AFF
E-1	BALCONY LIGHT
E	MANDARD WALL MOUNT (UNLESS OTHERWISE NOTED)
H	SIGN MOUNT LIGHT
D	SPLIT RECESSED BALCONY (SUPPLIED BY SIGN SUPPLIER)
D1	WALL PAK LIGHT
S	EXTERIOR SPEAKER
+	EMERGENCY LIGHT / EXIT SIGN
+	EXTERIOR EMERGENCY LIGHTING
⊙	INTERIOR SPEAKER
⊙	CRABSPOT PENDANT LIGHT
⊙	CYLINDRICAL PENDANT LIGHT
⊙	MULTI-COLOR PENDANT LIGHT
⊙	RECESSED DOWNLIGHT
⊙	RECESSED SPOTLIGHT
□	2 X 4 LED FIXTURE MOUNT NO LOWER THAN 8'
□	1 X 4 LED FIXTURE WALK IN COOLER/FREEZER
□	2 X 2 LED FIXTURE MOUNT NO LOWER THAN 8'
□	MECH. - RETURN AIR
□	MECH. - DIFFUSED SUPPLY
□	MECH. - SUPPLY
□	MECH. - REGISTER

HERMITAGE LIGHTING CONTACT INFORMATION:  
DAVID JACKSON  
(800) 264-3383  
djackson@hermitagelighting.com

NOTE:  
● CEILING GRID#1 TO BE INSTALLED CENTERED ABOVE DINING ROOM SPACE.

**SPECIFICATIONS:**  
DIVISION 9: FINISHES

SECTION 9C: SUSPENDED CEILING  
GENERAL PROVISIONS  
1. SCOPE: FURNISH AND INSTALL ACOUSTICAL TILE PANELS WITH MANUFACTURER'S SUSPENSION SYSTEM.  
PERFORMANCE  
1. INSTALLATION: GRID SHALL BE INSTALLED AS SHOWN AND IN STRICT ACCORDANCE WITH MANUFACTURER'S INSTRUCTIONS. LEVEL ACCURATELY AND HANG FROM #9 GAUGE ANNEALED WIRE NOT OVER 4' ON CENTERS. PROVIDE HOLD-DOWN CLIPS. COOPERATE IN FITTING AROUND AIR CONDITIONING AND VENTILATION OUTLETS. TRY TO AVOID FITTING RECESSED LIGHT FIXTURES WITHIN 3" OF EDGE OF TILE.

**GENERAL NOTES**

- 1) CEILING GRID SHALL BE SUPPORTED FROM STRUCTURAL MEMBERS ONLY. GRID SHALL NOT BE SUPPORTED FROM OTHER TRADES WORK.
- 2) COORDINATE GRID INSTALLATION WITH LOCATION OF MECHANICAL EQUIPMENT AS INDICATED ON SHEET M-100.
- 3) HANGER WIRES FOR GRID SHALL BE INSTALLED WITH NOT MORE THAN 0.5" C. AND AT EACH CORNER OF LAY-OUT LIGHT FIXTURES. SEE ELECTRICAL PLANS FOR FIXTURE LOCATIONS.
- 4) CEILING GRID SHOULD BE CENTERED AT DINING ROOM.

**MATERIALS:**

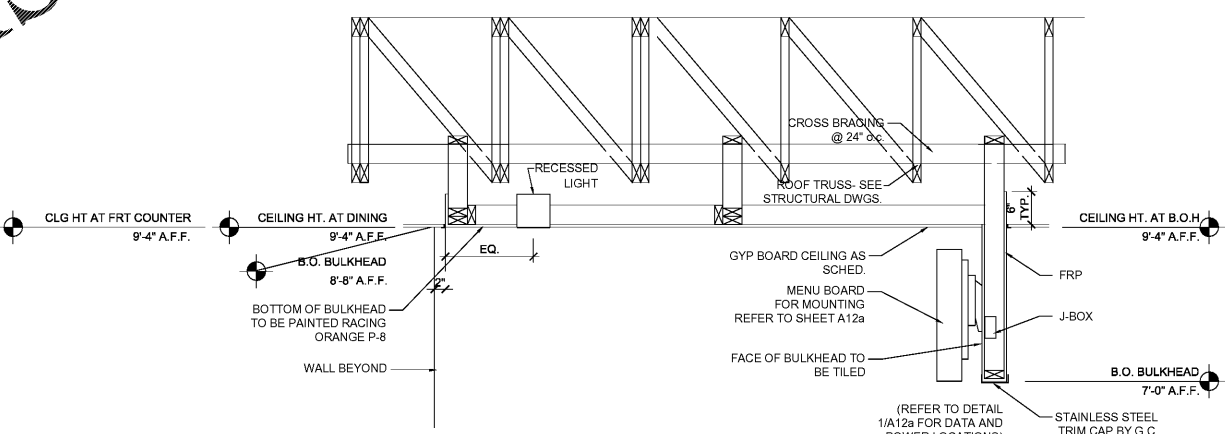
- GRID1 15/16" EXPOSED GRID DONN ALUMINUM CAP #DXL U.S.G. - COLOR: WHITE
- ACOU1 U.S.G. GLACIER BRAND LAY-IN CEILING TILE - #707-SL SHADOW LINE 24"x24"x3/4"
- GRID2 15/16" DBL WEBB HOT DIPPED GALV. STEEL TEE ALUMINUM CAP #ZXLA BY U.S.G. -COLOR: WHITE
- ACOU2 U.S.G. SHEETROCK BRAND LAY-IN CEILING TILE - "CLIMAPLUS" #3270, WHITE (NYL 24"x24"x3/4")
- ACOU2 U.S.G. "RADAR" BRAND U.S. #120, STL EDGES 24"x48"x3/4", (Optional) WHITE
- GPBD1 1/2" WMR GYPSUM BOARD SURFACE, JOINTS FILLED AND SMOOTHED, PRIME BEFORE PAINTING. NO TEXTURING

MANUFACTURERS AND COLORS SHALL BE AS SPECIFIED. SUBSTITUTIONS WILL NOT BE ACCEPTED. PAINT TO BE APPLIED IN ACCORDANCE WITH MANUFACTURER'S TECHNICAL DATA SHEETS.

**CONSTRUCTION KEY NOTES**

- 1) CONTRACTOR SHALL PROVIDE AND INSTALL STAINLESS STEEL CEILING PANELS (20 GAUGE) AT HOOD AREA. INSTALLATION SHALL EXTEND A MINIMUM 18" BEYOND THE EDGE OF THE HOOD, UNLESS SPECIFIED OTHERWISE.
- 2) INSTALL A STAINLESS STEEL CAP ALONG THE BOTTOM EDGE OF THE BULKHEAD TO A HEIGHT OD 3" UP THE SIDES.
- 3) DECORATIVE METAL SOFFIT.
- 4) GC SHALL COORDINATE THE INSTALL OF THE MENU BOARD WITH SICOM AT THE LOCATION SHOWN. COORDINATE WITH THE POPEYES CONSTRUCTION MANAGER AND SICOM FOR INSTALLATION TIMELINES AND REQUIREMENTS.
- 5) THE LIGHTING FIXTURES BELOW THE BALCONY SHALL BE PREINSTALLED BY THE BALCONY MANUFACTURER. CONTACT THE MANUFACTURER TO VERIFY ELECTRICAL REQUIREMENTS.
- 6) THE "E" FIXTURE LIGHTS ARE CENTERED ABOVE THE GLAZING AT THE CENTER LINE. THE GC SHALL ENSURE THAT THE AWNING INSTALLERS ADJUST THE AWNING STRUTS TO AVOID THE FIXTURES.

**1 REFLECTED CEILING PLAN**  
1/4"=1'-0"



**2 SECTION @ MENUBOARD & SALES COUNTER BULKHEAD**  
3/4"=1'-0"

© 2017 This drawing, printed or otherwise, is the copyrighted property of Nelco Architecture, Inc. The drawing may not be used, reproduced or copied without the permission of Nelco Architecture, Inc.