

1 FINISH FLOOR PLAN  
A2 1/4"=1'-0"

**SPECIFICATIONS:**

**DIVISION 9: FINISHES**

**SECTION 9B: TILE**

**GENERAL PROVISIONS**

- SCOPE: FURNISH AND INSTALL ALL TILE FLOORS AND WALLS.
- QUALITY CONTROL: ALL TILE MATERIALS AND INSTALLATIONS SHALL CONFORM TO THE RECOMMENDED PRACTICES OF THE TILE COUNCIL OF AMERICA, INC.
- REFER TO THE POPEYES VENDOR DIRECTORY FOR APPROVED SUPPLIERS.

**MATERIALS**

- USE CERAMIC AND QUARRY TILE AS SHOWN ON FINISH SCHEDULE.
- GROUT:
  - JOINTS IN FLOOR WALLS, AND BASE: EPOXY IS REQUIRED. HYDROMENT V-POXY AARI OR APPROVED ALTERNATE HYDROMENT SANDED JOINT FILLER AS MANUFACTURED BY THE UPOCO COMPANY OR EQUAL CUSTOM BUILDING PRODUCTS. COLOR AS SHOWN ON FINISH SCHEDULE.
  - CONCRETE TILE BACKER BOARD.
    - DURROCK NAILABLE CONCRETE BACKER BOARD BY USG INDUSTRIES, INC., 101 S. CHICAGO, IL 60606 ATTN: DEPT. #TOS-585 TO BE INSTALLED PER MANUFACTURER'S SPECIFICATIONS.

**PERFORMANCE**

- INSTALLATION:
  - INTERIOR CERAMIC WALL TILE SHALL BE INSTALLED IN ACCORDANCE WITH TILE COUNCIL METHOD W 243 GYPSUM BOARD, LATEX PORTLAND CEMENT BOND COAT WITH HYDROMENT TILE-MATE 710 WITH FLEX-A-LASTIC ADDITIVE.
  - INTERIOR FLOOR TILE AND BASE SHALL BE INSTALLED IN ACCORDANCE WITH TILE COUNCIL THIN-SET METHOD F113 DRY SET MORTAR OR LATEX PORTLAND CEMENT MORTAR WITH HYDROMENT TILE-MATE 760 WITH FLEX-A-LASTIC ADDITIVE. IN ALL AREAS EXCEPT KITCHEN & RESTROOMS WHERE SLAB IS DEPRESSED 2" TO 3" THICK SET METHOD AS DESCRIBED BELOW IN ITEM #1. -SLOPE FLOOR PER FOUNDATION PLAN.
  - JOINTS IN FLOOR AND BASE JOINTS IN FLOORS AND BASES IN FOOD PREP, SUPPLY, SALES, UTILITY WASH, AND LETS SHALL BE INSTALLED IN ACCORDANCE WITH THE TILE COUNCIL METHOD OF #115 DRY-SET MORTAR WITH EPOXY GROUT IN LIEU OF CEMENT BASE GROUT. GROUT SHALL BE HYDROMENT U-FIXY AARI. ALTERNATE HYDROMENT JOINT FILLER BY THE UPOCO CO., IN ACCORDANCE WITH MANUFACTURER'S INSTRUCTIONS. JOINTS SHALL BE 1/4" WIDE AND COMPLETELY FILLED LEVEL WITH THE SHOULDER OF THE TILE AND THEN TOOLED TO A SMOOTH DENSE FINISH.
  - JOINTS IN WALL TILE SHALL BE GROUTED WITH HYDROMENT JOINT FILLER IN ACCORDANCE WITH MANUFACTURER'S INSTRUCTIONS AND SHALL BE DAMP CURED. THE TILE SHALL BE CLEANED OF SURFACE GROUT AS WORK PROCEEDS USING DRY GROUT AND BURLAP CLOTH. NO ACID CLEANER SHALL BE USED.
  - CLEAR SILICONE SEALANT AROUND PERIMETER TILE EDGES WHEN ABUTTING TO OTHER MATERIALS.

**SECTION 9C: PAINTING**

**GENERAL PROVISIONS**

- SCOPE: SUPPLY ALL LABOR, MATERIALS, AND EQUIPMENT NECESSARY FOR THE PROPER PAINTING AND FINISHING OF THE BUILDING.

**MATERIALS**

- PAINT BRANDS AND COLORS ARE GIVEN IN THE FINISH SCHEDULE TO SHOW EXACT COLOR REQUIRED. UNSPECIFIED BRANDS OF MATERIALS SUCH AS SHELLAC, TURPENTINE, THINNER, ETC., SHALL BE PURE AND OF THE BEST QUALITY OBTAINABLE. ALL MATERIALS SHALL BE USED WITHOUT ALTERATIONS AND ONLY AS SPECIFIED BY THE PAINT MANUFACTURER.
- PUTTY AND FILLERS SHALL BE AS RECOMMENDED BY THE PAINT MANUFACTURER.
- CAULKING MATERIAL SHALL BE TWO COAT ACRYLIC TERMOYMER SEALANT, WHITE COLOR, BY TEMCO MANUFACTURING CO. CLEVELAND, OH, OR APPROVED EQUAL.

**PERFORMANCE**

- WORKMANSHIP: ALL SURFACES TO BE PAINTED SHALL BE CLEAN AND FREE OF DIRT, DUST OR GRIT BEFORE PAINTING IS STARTED. PAINTING SHALL NOT BE DONE WHEN THERE IS SWEEPING OR EXCESSIVE DUST IN THE AIR. ALL STREAKS, RESIN SPOTS, ETC., SHALL BE CLEANED OF ALL RESIDUE AND TOUCHED UP WITH SHELLAC BEFORE PAINTING. PUTTY SHALL BE APPLIED WHERE THE WOOD DOES NOT DRY TO A UNIFORM SHEEN OVER THE ENTIRE SURFACE. SPOT PRIME THE AREAS THAT INDICATE SUCTION BEFORE APPLYING FINISH COATS. UNDERCOATS OF PAINT SHALL BE TINTED TO A COLOR APPROXIMATING THE FINISH COATS, WITH ENOUGH VARIATION IN COLOR TO PERMIT VISUAL INSPECTION OF MATERIALS DURING THIS WORK. ALL MATERIALS SHALL BE EVENLY SPREAD AND FLOWED ON WITHOUT RUNS, SAP, OR EXCESSIVE BRUSH MARKS.
- STEEL DOORS, FRAMES, GATES, PIPE GUARDS, LIGHT POLES, EXPOSED SIGN SUPPORTS, GAS PIPES, HANDRAILS, AND OTHER FREE-STANDING METAL ACCESSORIES:
  - PRE-PRIMED: TWO (2) ADDITIONAL COATS OF EXTERIOR ENAMEL BENJAMIN MOORE IRON CLAD #163 OVER FINELY-SANDED PRIMER. SEE FINISH SCHEDULE FOR COLOR.
  - BARE METAL: TWO (2) COATS BENJAMIN MOORE IRON CLAD #163 OVER TWO (2) COATS FINELY-SANDED METAL PRIMER. SEE FINISH SCHEDULE FOR COLOR. NOTE: GAS PIPE SHALL BE PAINTED ONLY AFTER PRESSURE TESTED.
- ALUMINUM LIGHT POLES: POLES SHALL BE PROVIDED BY HERMITAGE LIGHTING AS A PART OF THEIR LIGHTING PACKAGE. THESE POLES COME PREFINISHED IN DARK BRONZE, AND IS INSTALLED BY THE SITE LIGHTING CONTRACTOR. CONCRETE POLES ARE ALLOWED IF REQUIRED BY THE LOCAL JURISDICTION, AND SHALL BE SEALED OR FINISHED ACCORDING TO THE LOCAL CODE.
- SIGN POLES: SIGN POLES SHALL BE PRIMED AND PAINTED WITH TWO COATS. REFER TO FINISH SCHEDULE FOR FINISH.

**SECTION 9F: PREFINISHED PANELS**

**GENERAL PROVISIONS**

- SCOPE: FURNISH AND INSTALL PANELS AND MATCHING TRIM, INTERIOR PREFINISHED PANELS, TRIM, CORNER GUARDS, AND ACCESSORIES.
- NOTES: REFER TO NATIONAL ACCOUNT DIRECTORY.

**MATERIALS**

- MARLITE PLANKS AND TRIM 16" X 8" X 1/4". COLOR AND TEXTURE AS SHOWN ON FINISH SCHEDULE. ADHESIVE: MARLITE BRAND C-375 WATERPROOF ADHESIVE. CAULKING: MARLITE BRAND CAULKING.
- FIBERGLASS REINFORCED PANELS:
  - MARLITE TYPE 200 TOS FRP PANELS, 4' X 8' X 0.10". AND MATCHING TRIM, CLASS C/11. (USE 8' LENGTHS FOR CEILING > 8') COLOR: SEE FINISH SCHEDULE. ADHESIVE: MARLITE BRAND C-375 SOLVENT-BASED ADHESIVE. CAULKING: MARLITE SILICONE BRAND SEALANT.
  - WHERE REQUIRED BY CODE ONLY, FIRE-RATED FRP PANELS WITH CLASS A/1 ARE AVAILABLE FOR MARLITE.
- STAINLESS STEEL CORNER GUARDS:
  - EXTRA DUTY CORNER GUARDS AT OUTSIDE WALL CORNERS IN FOOD PREP, POT WASH, AND STORAGE AREAS AS SHOWN SHALL BE STAINLESS STEEL, AND SHALL EXTEND FROM TOP OF TILE BASE TO THE CEILING, WITH CONCEALED FASTENERS. CLEAR CAULK.

**ACCEPTABLE MANUFACTURER:**

PROVIDE ALL CORNER GUARDS FROM A SINGLE SOURCE.

**MATERIALS:**

STAINLESS STEEL: CORNER GUARDS SHALL BE MANUFACTURED FROM TYPE 304, 16 GAUGE STAINLESS STEEL.

**MARLITE PANELS:**

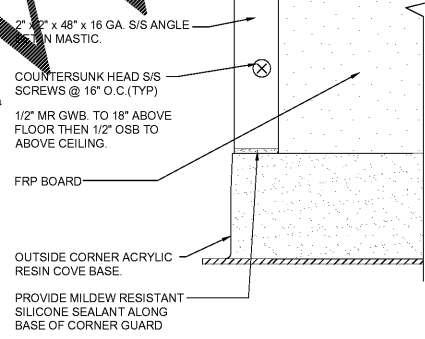
**PERFORMANCE**

- INSTALL MARLITE PANELS IN ACCORDANCE WITH MANUFACTURER'S INSTRUCTIONS. APPLY MATCHING TRIM BEFORE INSTALLING PANELS. FLUE UP PANELS ON GYPSUM BOARD, SETTING ALL PANELS INTO TRIM IN A BED OF CLEAR CAULK. USE MARLITE SOLVENT-BASED ADHESIVE C-375 OR EQUAL APPROVED BY MANUFACTURER. DO NOT APPLY WHEN TEMPERATURE IS LESS THAN 40 DEGREES F. CAULK AROUND ALL JOINTS, TRIM, AND ABUTTING EDGES WITH CLEAR SILICONE.

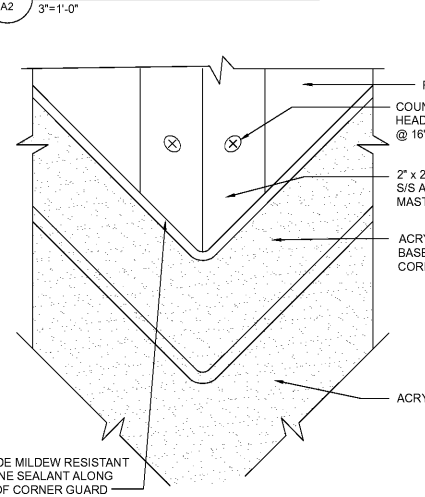
**SECTION 9G: LAMINATE WALLS**

**GENERAL PROVISIONS**

- FURNISH AND INSTALL PANELS PER MANUFACTURER'S INSTALLATION REQUIREMENTS. REFER TO FINISH SCHEDULE.
- APPLY LAMINATE TO 1/2" PLYWOOD SUBSTRATE AND ADHERE PANELS WITH MANUFACTURER'S RECOMMENDED GLUE AND ANCHORS.
- ALL JOINTS TO BE BUTTED TOGETHER.



2 KITCHEN CORNER GUARD ELEVATION VIEW  
A2 3/8"=1'-0"

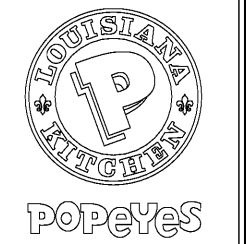


3 KITCHEN CORNER GUARD ISOMETRIC VIEW  
A2 3/8"=1'-0"

POPEYES LOUISIANA KITCHEN				PLK 18 SERIES INTERIOR FINISH SCHEDULE			
COMPLETE WORKING LIST				UPDATE: 12/6/2018			
Mark	Location	Supplier / Manuf.	Material	Specification	Color	Finish	
F-1	DINING & RESTROOMS	CELANESE INTERIORS	PORCELAN TILE	BUSINESS SLATE	WHITE	EPoxy BASE TILE	
G-1	DINING & RESTROOMS	MMPEI	GROUT	MMPEI	ULTRACOLOR PLUS - IRON #07	SANDED OR EPOXY BLEND	
EP-1	KITCHEN AREA FLOOR AND BASE	RES-TEK	ACRYLIC FLOORING	ACRYLIC FLOORING	P-1 PEBBLE GRAY	EPOXY FLOORING	
WALLS AND DOORS							
Mark	Location	Supplier / Manuf.	Material	Specification	Color	Finish	
P-1	SEASIDE/BREAK ROOM WALLS/STUFFING	BENJAMIN MOORE	ACRYLIC LATEX	PRIME / PRIME	OC-608 "OCEAN TIDE"	1 COAT #822 PRIMER 2 COATS ULTRA SPEC 300 EPOXY	
P-2	DOOR FRAME	BENJAMIN MOORE	ACRYLIC LATEX	PRIME / PRIME	2133-20 "BLACK JACK"	1 COAT #822 PRIMER 2 COATS ULTRA SPEC 300 EPOXY	
P-3	BREAK ROOM	SHERWIN WILLIAMS	ACRYLIC LATEX	PRIME / PRIME	SW-888 "MASCARATE"	1 COAT #822 PRIMER 2 COATS ULTRA SPEC 300 EPOXY	
P-4	RESTROOM WALLS AND LED CHICKEN GRAPHIC	BENJAMIN MOORE	ACRYLIC LATEX	PRIME / PRIME	OC-608 "OCEAN TIDE"	1 COAT #822 PRIMER 2 COATS ULTRA SPEC 300 EPOXY	
AP-1	WALL GRAPHIC	GRAPHICS VENDOR	CAVARS	DIGITALLY PRINTED	8A-1 "SE NICE OR LEAVE"	FRAME	
AP-2	WALL GRAPHIC	GRAPHICS VENDOR	CAVARS	DIGITALLY PRINTED	8A-1 "SE NICE OR LEAVE"	FRAME	
AP-3	WALL GRAPHIC	GRAPHICS VENDOR	CAVARS	DIGITALLY PRINTED	AP-3 "BEAUTY NOT URBANITY"	FRAME	
AP-4	WALL GRAPHIC	GRAPHICS VENDOR	CAVARS	DIGITALLY PRINTED	AP-3 "BEAUTY NOT URBANITY"	FRAME	
AP-5	WALL GRAPHIC	GRAPHICS VENDOR	CAVARS	DIGITALLY PRINTED	AP-3 "BEAUTY NOT URBANITY"	FRAME	
AP-6	WALL GRAPHIC	GRAPHICS VENDOR	CAVARS	DIGITALLY PRINTED	AP-3 "BEAUTY NOT URBANITY"	FRAME	
AP-7	WALL GRAPHIC	GRAPHICS VENDOR	CAVARS	DIGITALLY PRINTED	AP-3 "BEAUTY NOT URBANITY"	FRAME	
AP-8	WALL GRAPHIC	GRAPHICS VENDOR	CAVARS	DIGITALLY PRINTED	AP-3 "BEAUTY NOT URBANITY"	FRAME	
AP-9	WALL GRAPHIC	GRAPHICS VENDOR	CAVARS	DIGITALLY PRINTED	AP-3 "BEAUTY NOT URBANITY"	FRAME	
AP-10	WALL GRAPHIC	GRAPHICS VENDOR	CAVARS	DIGITALLY PRINTED	AP-3 "BEAUTY NOT URBANITY"	FRAME	
AP-11	WALL GRAPHIC	GRAPHICS VENDOR	CAVARS	DIGITALLY PRINTED	AP-3 "BEAUTY NOT URBANITY"	FRAME	
AP-12	WALL GRAPHIC	GRAPHICS VENDOR	CAVARS	DIGITALLY PRINTED	AP-3 "BEAUTY NOT URBANITY"	FRAME	
BR-1	DINING ROOM ACCENT WALLS	BRICK	THIN BRICK	BRICK	BRICK	1 COAT #822 PRIMER 2 COATS ULTRA SPEC 300 EPOXY	
F-1	DINING ROOM ACCENT WALLS	MANUFACTURER	BEADBOARD	PAINT P	OC-608 "OCEAN TIDE"	1 COAT #822 PRIMER 2 COATS ULTRA SPEC 300 EPOXY	
F-2	DINING ROOM	CREATIVE MATERIALS	FIELD TILE	FIELD TILE	WHITE	2" X 4" FLOOR TILE	
F-3	RESTROOM WALLS & FLOORING	CREATIVE MATERIALS	WALL TILE	WALL TILE	WHITE	6" X 6" FLOOR AND WALL TILE	
F-4	FRONT SERVICE COUNTER	CREATIVE MATERIALS	WALL TILE	WALL TILE	WHITE GLOSSY	6" X 6" WALL TILE	
G-2	FRONT SERVICE COUNTER	MMPEI	GROUT	MMPEI	ULTRACOLOR PLUS - PEARL GREY #19	SANDED OR EPOXY BLEND	
CS-1	CORNER GUARD	MMPEI	FRP SHEET	FRP	FRP	FRP	
UP-30	CORNER GUARD	MMPEI	FRP SHEET	FRP	FRP	FRP	
W-1	WALL	MMPEI	FRP SHEET	FRP	FRP	FRP	
EP-1	EPOXY FLOORING	MMPEI	ULTRACOLOR PLUS	ULTRACOLOR PLUS	ULTRACOLOR PLUS	ULTRACOLOR PLUS	
EP-2	EPOXY FLOORING	MMPEI	ULTRACOLOR PLUS	ULTRACOLOR PLUS	ULTRACOLOR PLUS	ULTRACOLOR PLUS	
CEILING							
Mark	Location	Supplier / Manuf.	Material	Specification	Color	Finish	
CE-1	RESTROOM CEILING	G.G. / USG INTERIORS	ACQUISITION TILE	ACQUISITION TILE	OC-608 "OCEAN TIDE"	SHADOWLINE	
CE-2	DINING CEILING	G.G. / USG INTERIORS	ACQUISITION TILE	ACQUISITION TILE	OC-608 "OCEAN TIDE"	FLAT	
CE-3	KITCHEN CEILING	G.G. / USG INTERIORS	ACQUISITION TILE	ACQUISITION TILE	OC-608 "OCEAN TIDE"	SHADOWLINE	
CE-4	KITCHEN CEILING	G.G. / USG INTERIORS	ACQUISITION TILE	ACQUISITION TILE	OC-608 "OCEAN TIDE"	FLAT	
SERVICE COUNTERS							
Mark	Location	Supplier / Manuf.	Material	Specification	Color	Finish	
SC-1	SERVICE COUNTER/PLUMB	HEART	SOLID SURFACE	SOLID SURFACE	WHITE	WHITE	
PL-2	CORNER GUARD	G.C.	PLASTIC LAMINATE	PLASTIC LAMINATE	WHITE	WHITE	

**FRCH NELSON**  
A NELSON BRAND

311 Elm Street Suite 600  
Cincinnati OH 45202  
513 241 3000  
www.frchnelson.com



**JPL MANAGEMENT**

**ISSUE INFORMATION**

REVISIONS


**Nelco Architecture, Inc.**

**PROJECT INFORMATION**

**BOWLING GREEN, KY**

DISHMAN LANE  
BOWLING GREEN, KY 42101

PROJECT #:  
20.0001760.000

**SHEET INFORMATION**

**FLOOR FINISH PLAN & INTERIOR FINISH SCHEDULE**

AW  
DRAWN BY:  
JN  
REVIEWED BY:

SCALE:

AUTHORIZED FOR:  
Permit / Bid