

REVISIONS

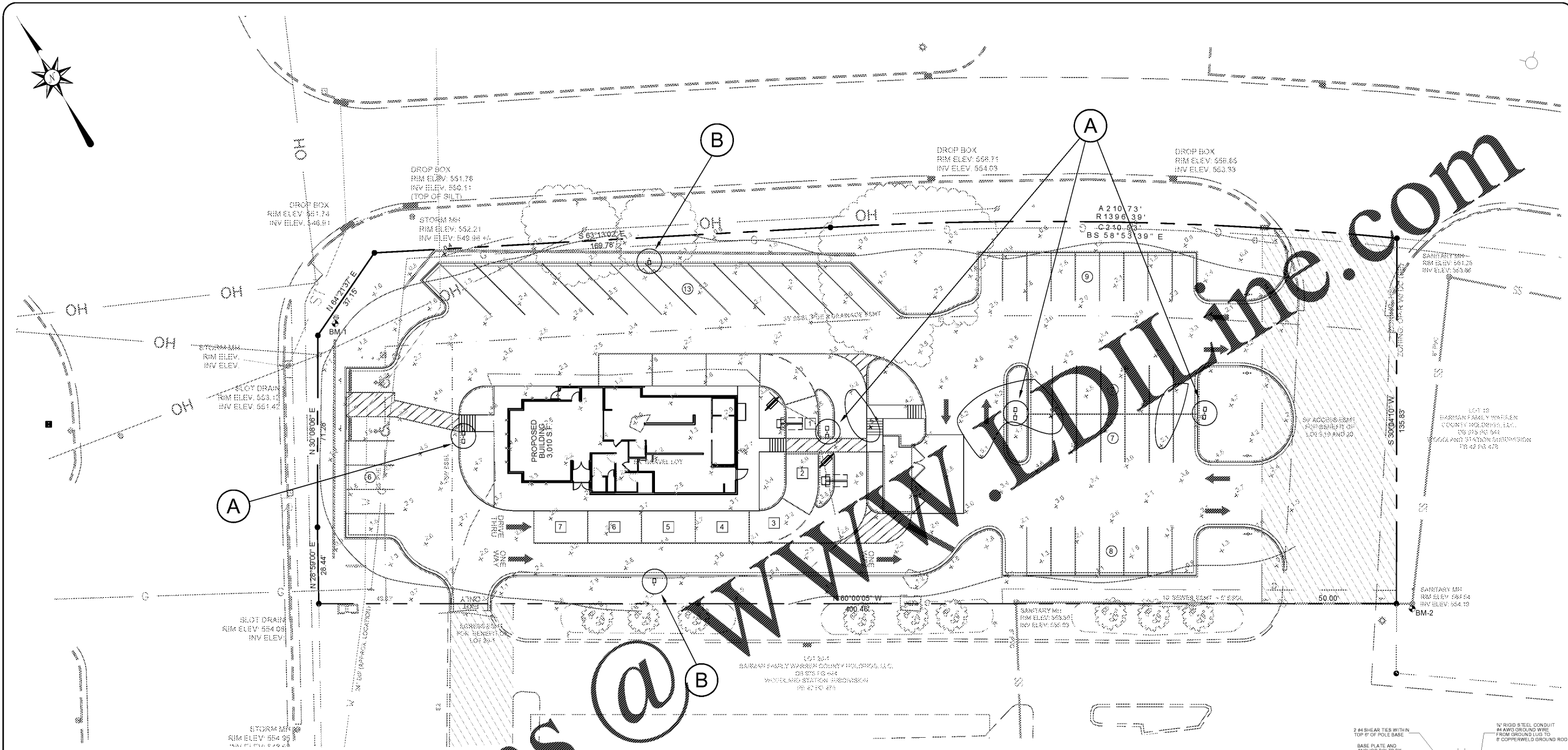
Popeyes
 NASHVILLE ROAD
 BOWLING GREEN, KY 42103

ACES
 ARNOLD CONSULTING
 ENGINEERING SERVICES, INC.
 P.O. BOX 1368
 BOWLING GREEN, KY 42101
 PHONE (270) 760-9445

JOB NUMBER: 20-1338-L
 DATE: 04-23-2020
 SCALE: 1" = 20'
 DRAWN: B. MCDANIEL
 CHECKED: A. ARNOLD
 FILE PATH:
 Z:\SITE\DEV2 SITE LAYOUT.DWG



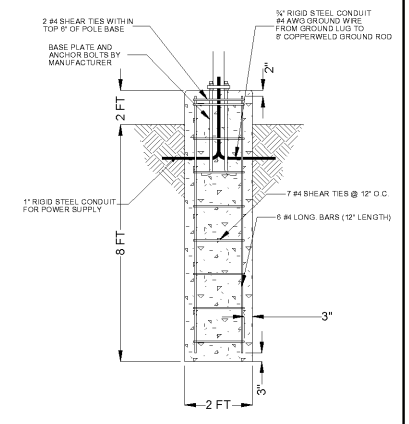
SL1
 SITE LIGHTING



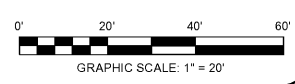
GENERAL NOTES

1. READINGS SHOWN ARE IN UNITS OF MAINTAIN FOOTCANDLES.
2. LISTED LIGHTING FIXTURES USED IN MODEL (SEE SCHEDULE THIS SHEET & MECHANICAL PLANS FOR FURTHER DETAILS).
3. FIXTURES SHALL MATCH AS NOTED OR EQUIVALENT PER OWNER.
4. A MOUNTING HEIGHT: 22'
B MOUNTING HEIGHT: 22'
5. ALL FIXTURES AND POLES TO BE DARK BRONZE.
6. READINGS TAKEN AT GRADE
7. SEE MECHANICAL/ELECTRICAL PLANS FOR EXACT LOCATION OF BUILDING MOUNTED FIXTURES AND WALL PACKS
8. FIXTURE SPACING AS SHOWN
9. L.L.F. CALCULATED AT 0.75
10. THE CONTRACTOR SHALL VERIFY TOTAL LINEAR FEET OF CONDUIT AND WIRE GAUGE SIZE IS ADEQUATE.
11. IT SHALL BE THE CONTRACTORS RESPONSIBILITY TO COORDINATE WITH MECHANICAL ENGINEER TO ENSURE ELECTRICAL PANEL LOADING REQUIREMENTS ARE MET AND NOT EXCEEDED.
12. CONTRACTOR SHALL COORDINATE WITH MECHANICAL PLANS FOR CONNECTION TO ELECTRICAL SERVICE PANEL.
13. CONTRACTOR SHALL VERIFY THAT ALL ELECTRICAL CONNECTIONS MEET LOCAL BUILDING CODES AND LOADING REQUIREMENTS.
14. ANY DISCREPANCIES BETWEEN ARCHITECTURAL, MECHANICAL, AND SITE LIGHTING PLANS SHALL BE BROUGHT TO THE ENGINEERS ATTENTION FOR REVIEW.

Symbol	Label	Quantity	Manufacturer	Catalog Number	Description	Lamp	Number Lamps	Filename	Lumens Per Lamp	Light Loss Factor	Wattage
⊗	A	4	Lithonia Lighting	DSX2 LED P1 50K TSM MVOLT	DSX2 LED P1 SK, TYPE TSM MVOLT	LED	1	DSX2_LED_P1 SK_TSM MVOLT.tes	19925	0.75	280
⊗	B	2	Lithonia Lighting	DSX2 LED P1 50K T2M MVOLT	DSX2 LED P1 SK, TYPE T2M MVOLT WITH HOUSESIDE SHIELD	LED	1	DSX2_LED_P1 SK_T2M MVOLT_HS.tes	15693	0.75	140



SITE LIGHTING POLE BASE DETAIL
 N.T.S.



BENCHMARK DATA:

- BENCHMARK 1
TELEPHONE MANHOLE LOCATED APPROX. 9.45' FROM A SET IRON PIN.
N: 1866416.17
E: 1428472.26
KY SPC (SOUTH)
ELEV: 554.71
- BENCHMARK 2
SANITARY SEWER MANHOLE LOCATED APPROX. 5.88' FROM A SET IRON PIN.
N: 1866124.04
E: 1428765.42
KY SPC (SOUTH)
ELEV: 554.52



COPYRIGHTS AND DISCLAIMERS

THE COPYRIGHTS IN THIS DESIGN AND DRAWINGS ARE THE PROPERTY OF ACES. NO REPRODUCTION OR USE FOR ANY PURPOSE OTHER THAN THAT AUTHORIZED BY ACES IS FORBIDDEN.

ACES ASSUMES NO RESPONSIBILITY FOR DATA SUPPLIED IN AN ELECTRONIC FORMAT. DATA IS PROVIDED ELECTRONICALLY AS A CONVENIENCE. THE RECIPIENT IS RESPONSIBLE FOR VERIFYING ACCURACY OF THE HARD COPY OF THE CURRENT DESIGN DRAWINGS WHICH HAVE BEEN SEALED AND SIGNED. IN THE EVENT OF INCONSISTENCIES BETWEEN THE ELECTRONIC AND THE HARD COPY DATA, THE RECIPIENT IS RESPONSIBLE FOR OBTAINING CLARIFICATION ON WHICH PREVAILS.

THE RECIPIENT RELEASES ACES, ITS EMPLOYEES, CONSULTANTS AND AGENTS FROM ANY AND ALL CLAIMS ARISING IN ANY WAY FROM THE CONTENT OR PROVISION OF THE ELECTRONIC DATA.

NOTHING SHALL REDUCE OR DIMINISH ACES'S OWNERSHIP OF OR COPYRIGHT IN THE DATA OR ITS COMPILATION OR ARRANGEMENT. ANY ANALYSIS, SOFTWARE OR FORMATTING IN THE ELECTRONIC DATA IS CONSIDERED PROPERTY OF ACES.

THE RECIPIENT OF ELECTRONIC DATA IS PROHIBITED FROM REDISTRIBUTING OR USING ANY DESIGN OR DRAWING INFORMATION WITHIN THE FILES FOR ANY REASON OTHER THAN IT WAS ORIGINALLY DESIGNED WITHOUT THE WRITTEN CONSENT OF ACES.