



DEKALB PEACHTREE AIRPORT
DEKALB COUNTY, GEORGIA

Michael Baker INTERNATIONAL

Designer:

GHL/RES

Technician:

GHL/RES

Checked by:

GHL

Project Number:

174297



Notes:



REVISIONS			
No.	Description	Date	By

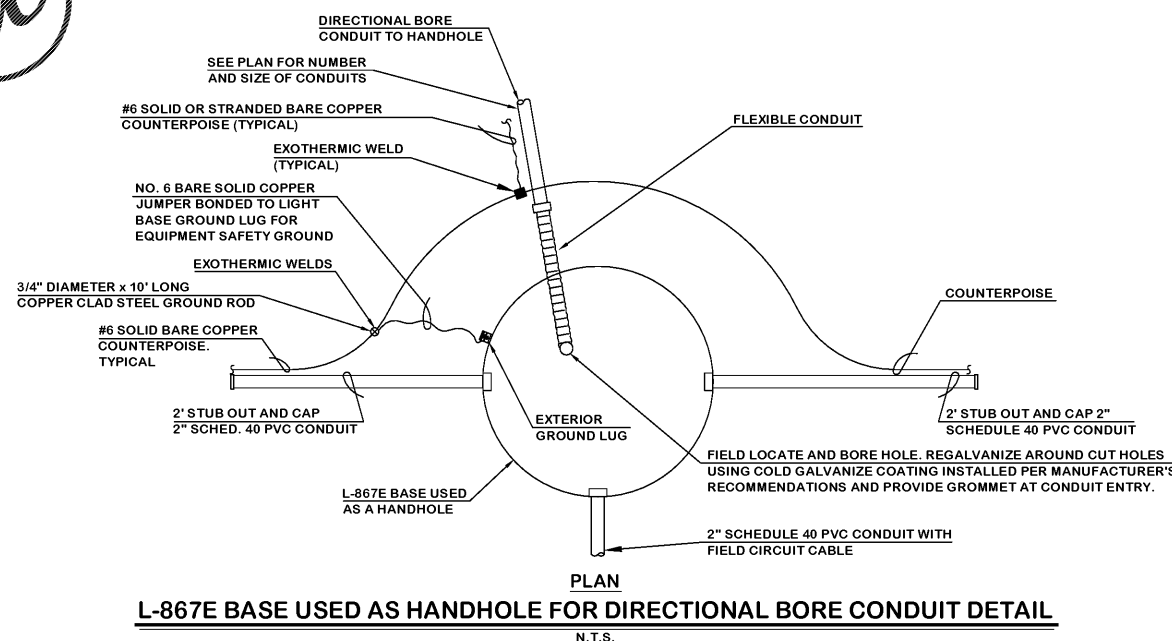
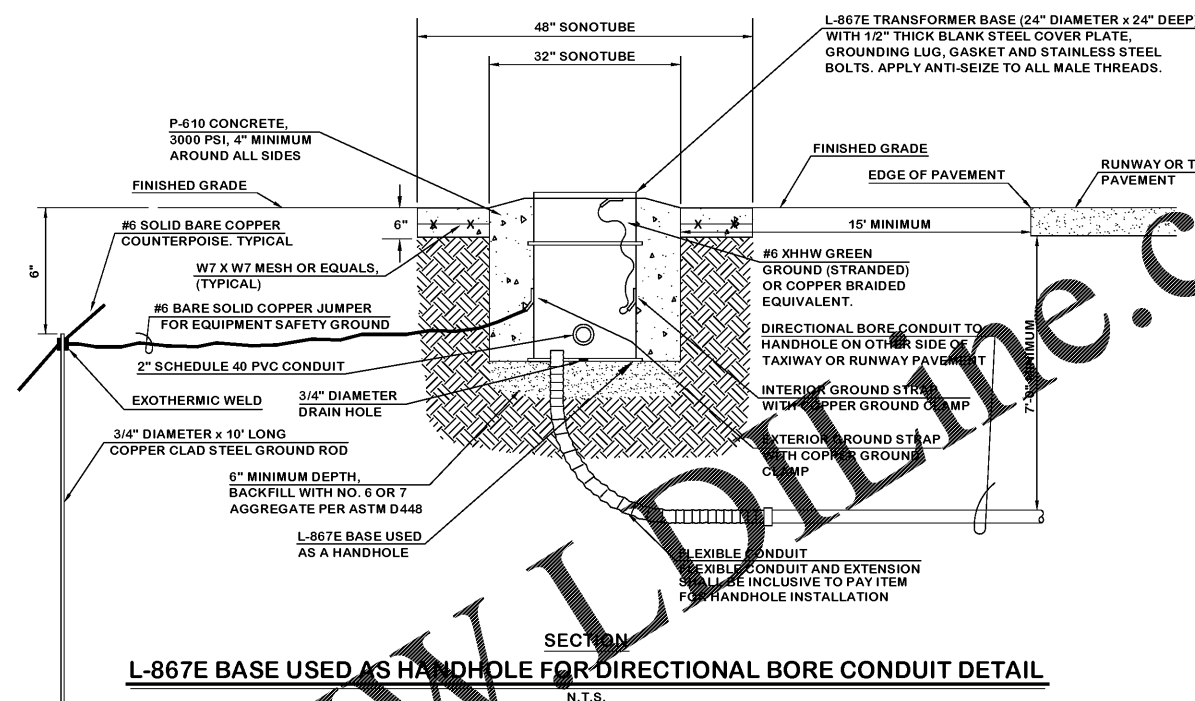
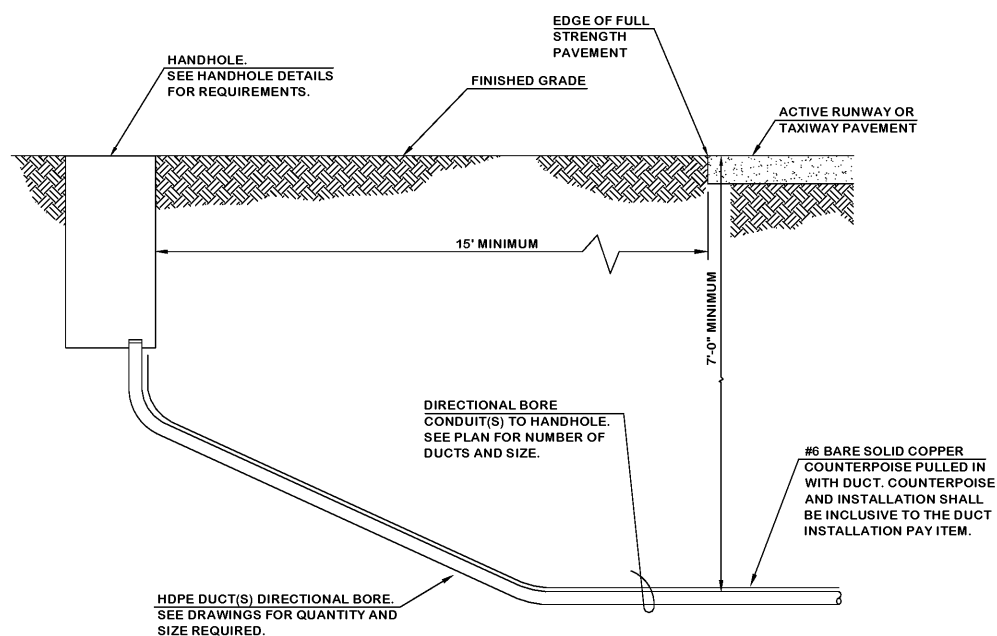
Project Name:
RUNWAY INCURSION MITIGATION IMPROVEMENTS (PDK 11)

Drawing Name:
LIGHTING DETAILS PLAN NO. 11

ITB# 20-101257

Date: **FEBRUARY, 2020** Sheet Number: **70** of **72**

Scale: **NTS** Drawing Number: **LD-11**



CONCRETE FOUNDATION AND CONCRETE MAINTENANCE PAD SHALL BE INCLUSIVE TO THE PER EACH PAY ITEM FOR THE HANDHOLE INSTALLATION.

TYPICAL HDPE DIRECTIONAL BORE CONDUIT DETAIL

N.T.S.

HDPE INSTALLED USING DIRECTIONAL BORE METHODS

THE CONTRACTOR SHALL FURNISH AND INSTALL DIRECTIONAL BORED CONDUITS UNDER THE EXISTING PAVEMENT FOR LOCATIONS AS SHOWN ON THE DRAWINGS. THE SIZE AND QUANTITY OF HDPE CONDUITS SHALL BE AS INDICATED ON THE DRAWINGS. THE DIRECTIONAL BORE INSTALLED HDPE CONDUITS SHALL BE INSTALLED A MINIMUM OF 7-FEET BELOW THE FULL STRENGTH PAVEMENT. A NO. 6 AWG BARE SOLID COPPER COUNTERPOISE SHALL BE PULLED IN WITH THE HDPE CONDUITS. WHERE MULTIPLE RUNS ARE SHOWN TO BE INSTALLED AT THE SAME LOCATION, THE PER LINEAR FOOT PAY ITEM SHALL BE FOR THE COMBINED TOTAL RUN OF MULTIPLE HDPE CONDUITS. THE COUNTERPOISE SHALL BE INCLUSIVE TO THE HDPE CONDUIT INSTALLATION PAY ITEM. NO SEPARATE PAYMENT WILL BE MADE FOR ROCK ENCOUNTERS OR MISSED ATTEMPTS.

SELECT OR DESIGN DRILLING FLUIDS FOR THE SITE SPECIFIC SOIL AND GROUND WATER CONDITIONS. CONFINE FREE FLOWING (ESCAPING) SLURRY OR DRILLING FLUIDS AT THE GROUND SURFACE DURING PULLBACK AND DRILLING OPERATIONS. ACCOMPLISH THIS BY CREATING SUMP AREAS OR VACUUM OPERATIONS TO PREVENT DAMAGE OR HAZARDOUS CONDITIONS IN SURROUNDING AREAS. REMOVE ALL RESIDUAL SLURRY FROM THE SURFACE AND RESTORE THE SITE TO PRE-CONSTRUCTION CONDITIONS.

THE CONTRACTOR SHALL BE RESPONSIBLE FOR RESTORATION OF ANY DAMAGE CAUSED BY HEAVING, SETTLEMENT OR SEPARATION OF PAVEMENT CAUSED BY THE DRILLING OPERATIONS AT NO ADDITIONAL COST TO THE OWNER.

USE A MIXTURE OF BENTONITE CLAY AND OTHER APPROVED STABILIZING AGENTS MIXED WITH POTABLE WATER WITH A MINIMUM pH OF 6.0 TO CREATE THE DRILLING FLUID FOR LUBRICATION AND SOIL STABILIZATION. VARY THE FLUID VISCOSITY TO BEST SUIT THE ACTUAL SOIL CONDITIONS ENCOUNTERED. DRILLING FLUIDS SHALL BE ENVIRONMENTALLY SAFE AND NOT HARMFUL OR CORROSIVE TO THE ENVIRONMENT.

WATER JETTING IS NOT ALLOWED.