



DEKALB PEACHTREE AIRPORT
DEKALB COUNTY, GEORGIA

Michael Baker INTERNATIONAL

Designer:
GHL/RES

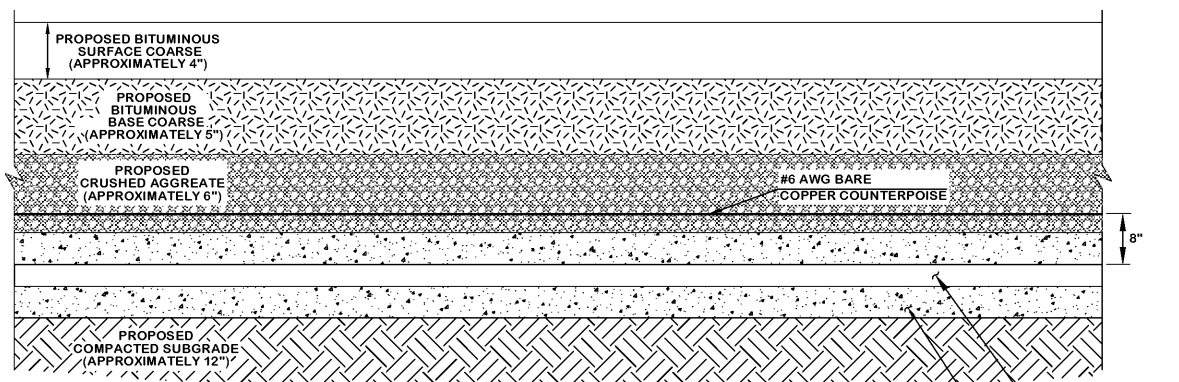
Technician:
GHL/RES

Checked by:
GHL

Project Number:
174297



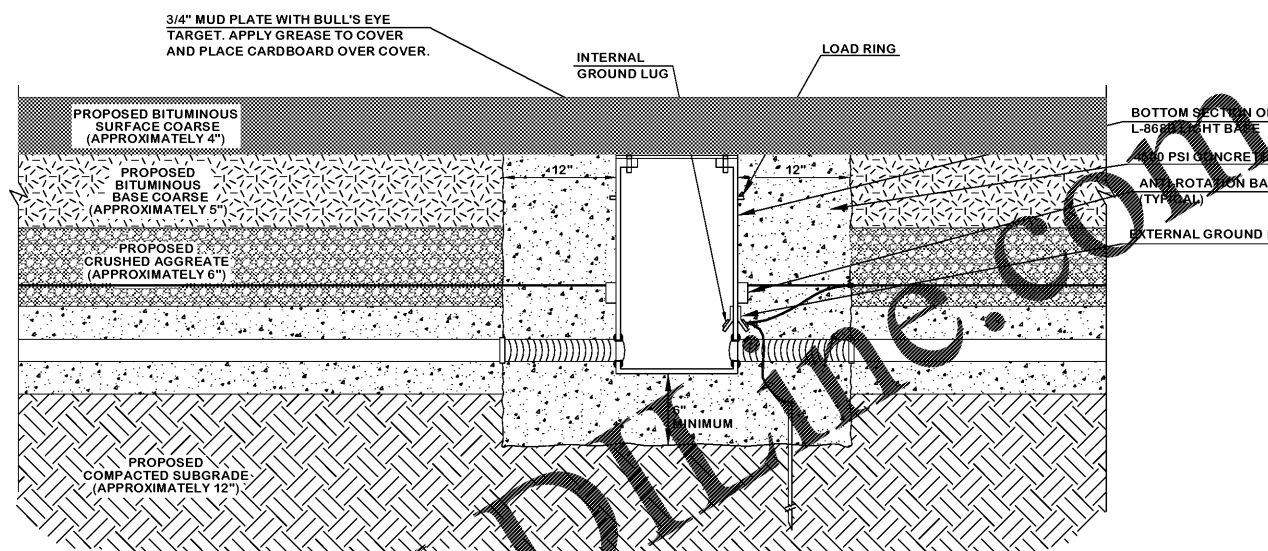
Notes:



SECTION
L-850C IN-PAVEMENT HIGH INTENSITY RUNWAY LIGHT
INSTALLATION IN NEW BITUMINOUS PAVEMENT - STEP 1

N.T.S.

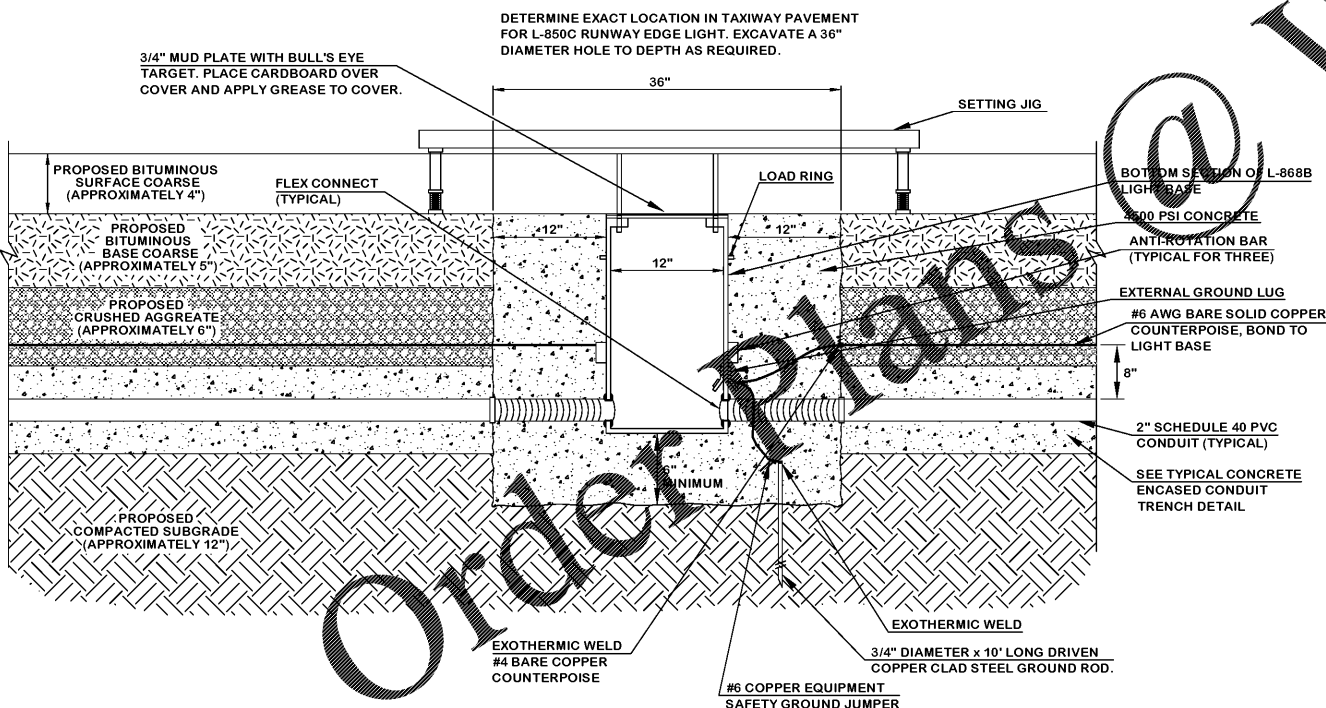
STEP 1 - INSTALL CONTINUOUS RUN OF CONCRETE ENCASED CONDUIT AND COUNTERPOISE CONDUCTOR. CONCRETE ENCASEMENT SHALL BE 3" MINIMUM AROUND ALL SIDES OF CONDUIT.



SECTION
L-850C IN-PAVEMENT HIGH INTENSITY RUNWAY LIGHT
INSTALLATION IN NEW BITUMINOUS PAVEMENT - STEP 3

N.T.S.

STEP 3 - REMOVE SETTING JIG AFTER CONCRETE HAS CURED. BASE IS READY FOR ASPHALT PAVING OPERATION.

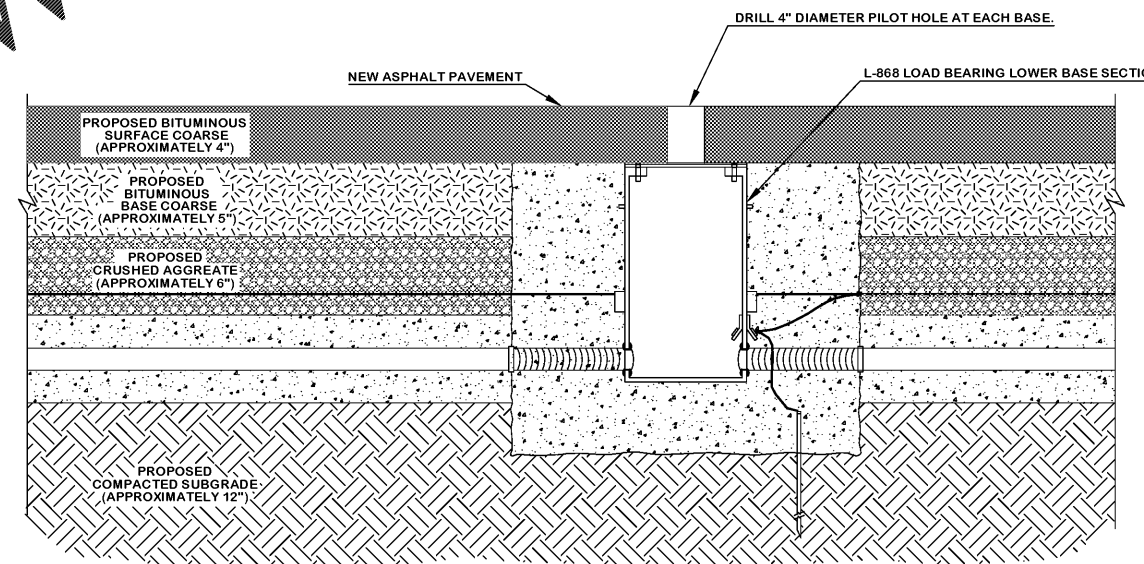


SECTION
L-850C IN-PAVEMENT HIGH INTENSITY RUNWAY LIGHT
INSTALLATION IN NEW BITUMINOUS PAVEMENT - STEP 2

N.T.S.

STEP 2 - BEFORE CRUSHED AGGREGATE BASE IS INSTALLED, INSTALL CONDUIT, COUNTERPOISE AND L-868B LIGHT BASE BOTTOM SECTION.

NOTE: FLEX CONDUIT IS NOT REQUIRED TO BE INSTALLED. IT CAN BE USED TO MAKE CONNECTION FROM BASE TO SCHEDULE 40 PVC CONDUIT EASIER.



SECTION
L-850C IN-PAVEMENT HIGH INTENSITY RUNWAY LIGHT
INSTALLATION IN NEW BITUMINOUS PAVEMENT - STEP 4

N.T.S.

STEP 4 - LOCATE CENTER OF LIGHT BASE COVER AND DRILL PILOT HOLE THROUGH NEW PAVEMENT.

REVISIONS			
No.	Description	Date	By

Project Name:
RUNWAY INCURSION MITIGATION IMPROVEMENTS (PDK 11)

Drawing Name:
LIGHTING DETAILS PLAN NO. 3

ITB# 20-101257

Date: **FEBRUARY, 2020** Sheet Number: **62** of **72**

Scale: **NTS** Drawing Number: **LD-3**