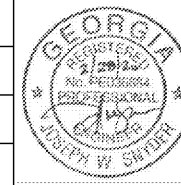




**DEKALB PEACHTREE AIRPORT**  
DEKALB COUNTY, GEORGIA

**Michael Baker INTERNATIONAL**

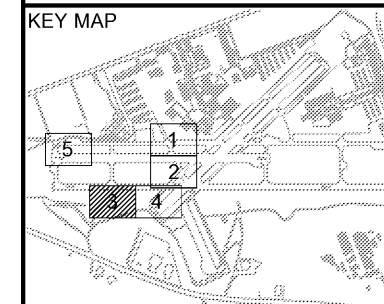
|                 |               |
|-----------------|---------------|
| Designer:       | <b>MRP</b>    |
| Technician:     | <b>MRP</b>    |
| Checked by:     | <b>JWS</b>    |
| Project Number: | <b>174297</b> |



Notes:

- REFER TO SHEET MD-1 FOR PAVEMENT MARKING DETAILS.
- RUNWAY HOLDING POSITION MARKINGS NORTHING AND EASTING CALLOUTS ARE MARKED AT THE MIDPOINT OF THE OUTERMOST YELLOW SOLID LINE AND DO NOT INCLUDE THE SIX (6) INCH BLACK BORDER.

KEY MAP



| REVISIONS |             |      |    |
|-----------|-------------|------|----|
| No.       | Description | Date | By |
|           |             |      |    |
|           |             |      |    |
|           |             |      |    |

Project Name:

**RUNWAY INCURSION MITIGATION IMPROVEMENTS (PDK 11)**

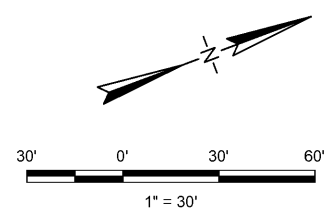
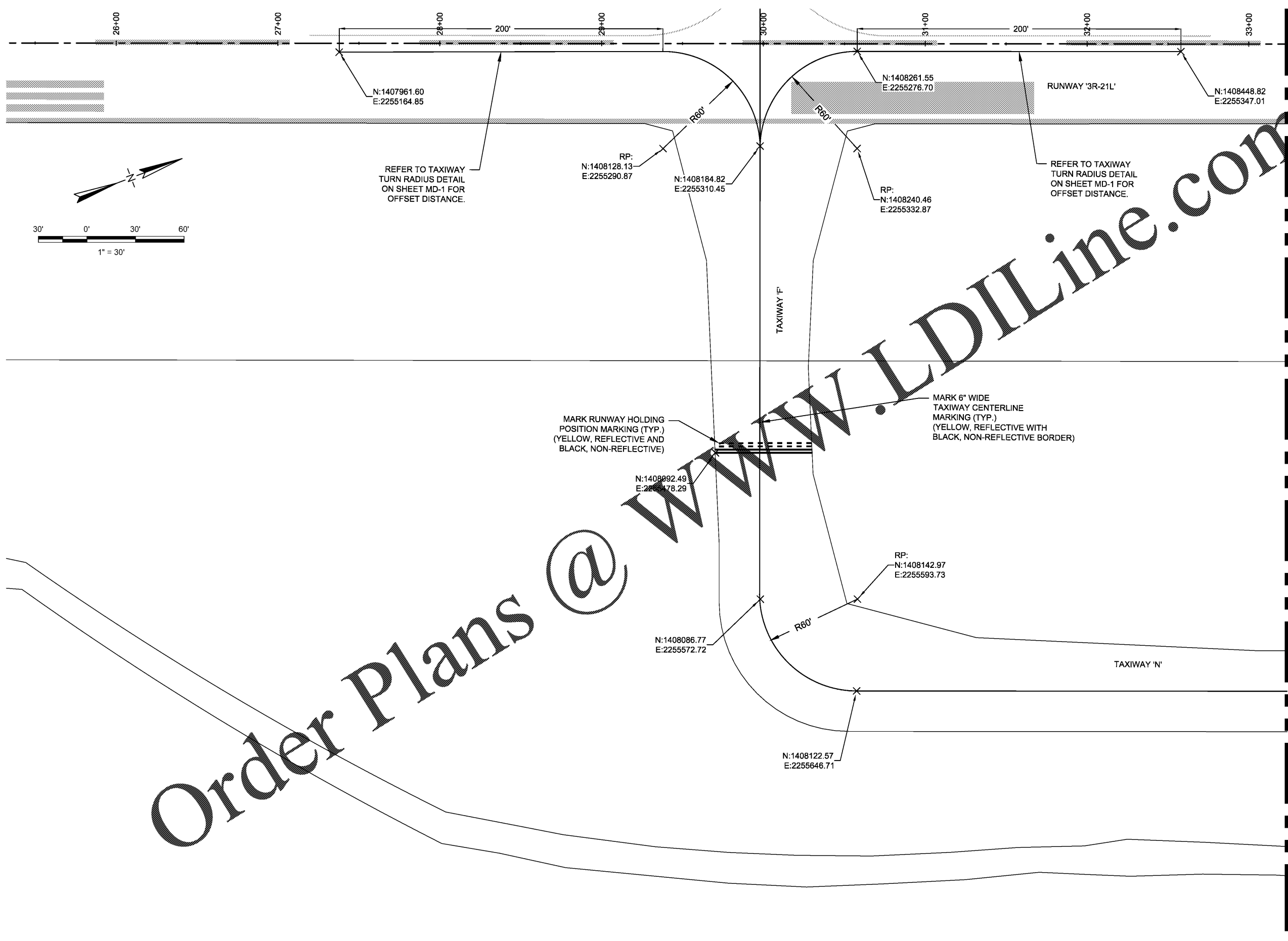
Drawing Name:

**PAVEMENT MARKING PLAN NO. 3**

**ITB# 20-101257**

Date: **FEBRUARY, 2020** Sheet Number: **41** of **72**

Scale: **1" = 30'** Drawing Number: **MP-3**



Order Plans @ [www.LDILine.com](http://www.LDILine.com)

MATCHLINE - SEE PAVEMENT MARKING PLAN NO. 4