



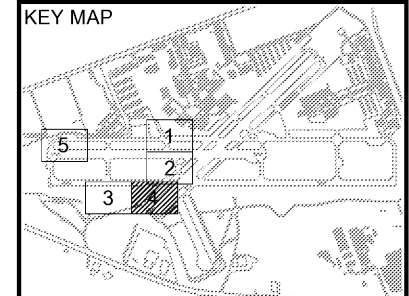
DEKALB PEACHTREE AIRPORT
DEKALB COUNTY, GEORGIA

Michael Baker INTERNATIONAL

Designer: **CPC**
Technician: **KJM**
Checked by: **JWS**
Project Number: **174297**



- Notes:
- REFER TO DRAWING BM-1 FOR SITE BENCHMARK DATA.
 - PROPOSED CONTOURS ARE AT 0.5' AND 1.0' INTERVALS.
 - CONTRACTOR SHALL LOCATE FAA AND AIRFIELD ELECTRICAL CABLES PRIOR TO CONSTRUCTION, AND HAVE CABLE LOCATIONS FIELD VERIFIED BY AIRPORT PRIOR TO DEMOLITION AND GRADING TO ENSURE NO CABLES ARE CUT. CONTRACTOR SHALL PAY ALL FEES ASSOCIATED WITH REPAIRS AND FINES PER PROJECT SPECIFICATIONS.
 - REFER TO PIPE PROFILES AND DRAINAGE DETAILS FOR ADDITIONAL STORM DRAINAGE INFORMATION.



REVISIONS			
No.	Description	Date	By

Project Name: **RUNWAY INCURSION MITIGATION IMPROVEMENTS (PDK 11)**

Drawing Name: **GRADING AND DRAINAGE PLAN NO. 4**

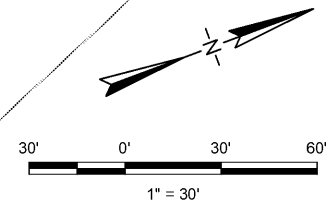
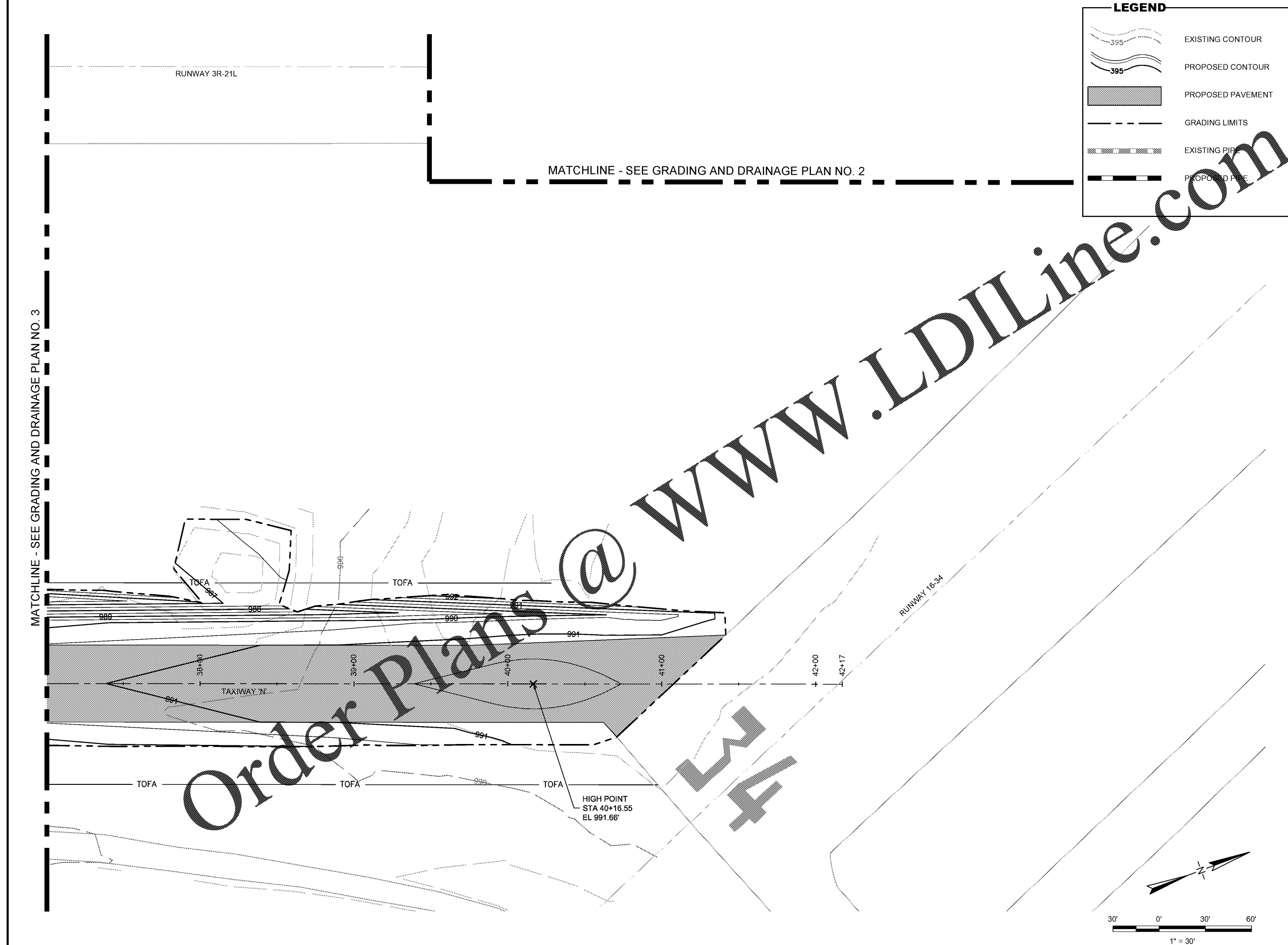
ITB# 20-101257

Date: **FEBRUARY, 2020** Sheet Number: **23** of **72**

Scale: **1" = 30'** Drawing Number: **GP-4**

LEGEND

- EXISTING CONTOUR (dashed line with elevation 395)
- PROPOSED CONTOUR (solid line with elevation 395)
- PROPOSED PAVEMENT (hatched area)
- GRADING LIMITS (dashed line)
- EXISTING PIPE (dashed line with cross-hatch)
- PROPOSED PIPE (solid line with cross-hatch)



MATCHLINE - SEE GRADING AND DRAINAGE PLAN NO. 3

MATCHLINE - SEE GRADING AND DRAINAGE PLAN NO. 2