



**DEKALB PEACHTREE  
AIRPORT**  
DEKALB COUNTY, GEORGIA

**Michael Baker  
INTERNATIONAL**

Designer:

**CPC**

Technician:

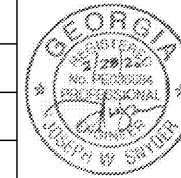
**KJM**

Checked by:

**JWS**

Project Number:

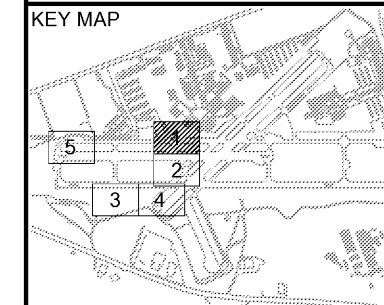
**174297**



Notes:

- REFER TO DRAWING BM-1 FOR SITE BENCHMARK DATA.
- PROPOSED CONTOURS ARE AT 0.5' AND 1.0' INTERVALS.
- CONTRACTOR SHALL LOCATE FAA AND AIRFIELD ELECTRICAL CABLES PRIOR TO CONSTRUCTION, AND HAVE CABLE LOCATIONS FIELD VERIFIED BY AIRPORT PRIOR TO DEMOLITION AND GRADING TO ENSURE NO CABLES ARE CUT. CONTRACTOR SHALL PAY ALL FEES ASSOCIATED WITH REPAIRS AND FINES PER PROJECT SPECIFICATIONS.
- REFER TO PIPE PROFILES AND DRAINAGE DETAILS FOR ADDITIONAL STORM DRAINAGE INFORMATION.

KEY MAP



REVISIONS

No.	Description	Date	By

Project Name:

**RUNWAY INCURSION  
MITIGATION IMPROVEMENTS  
(PDK 11)**

Drawing Name:

**GRADING AND  
DRAINAGE PLAN  
NO. 1**

ITB# 20-101257

Date:

**FEBRUARY, 2020**

Sheet Number:

**20 of 72**

Scale:

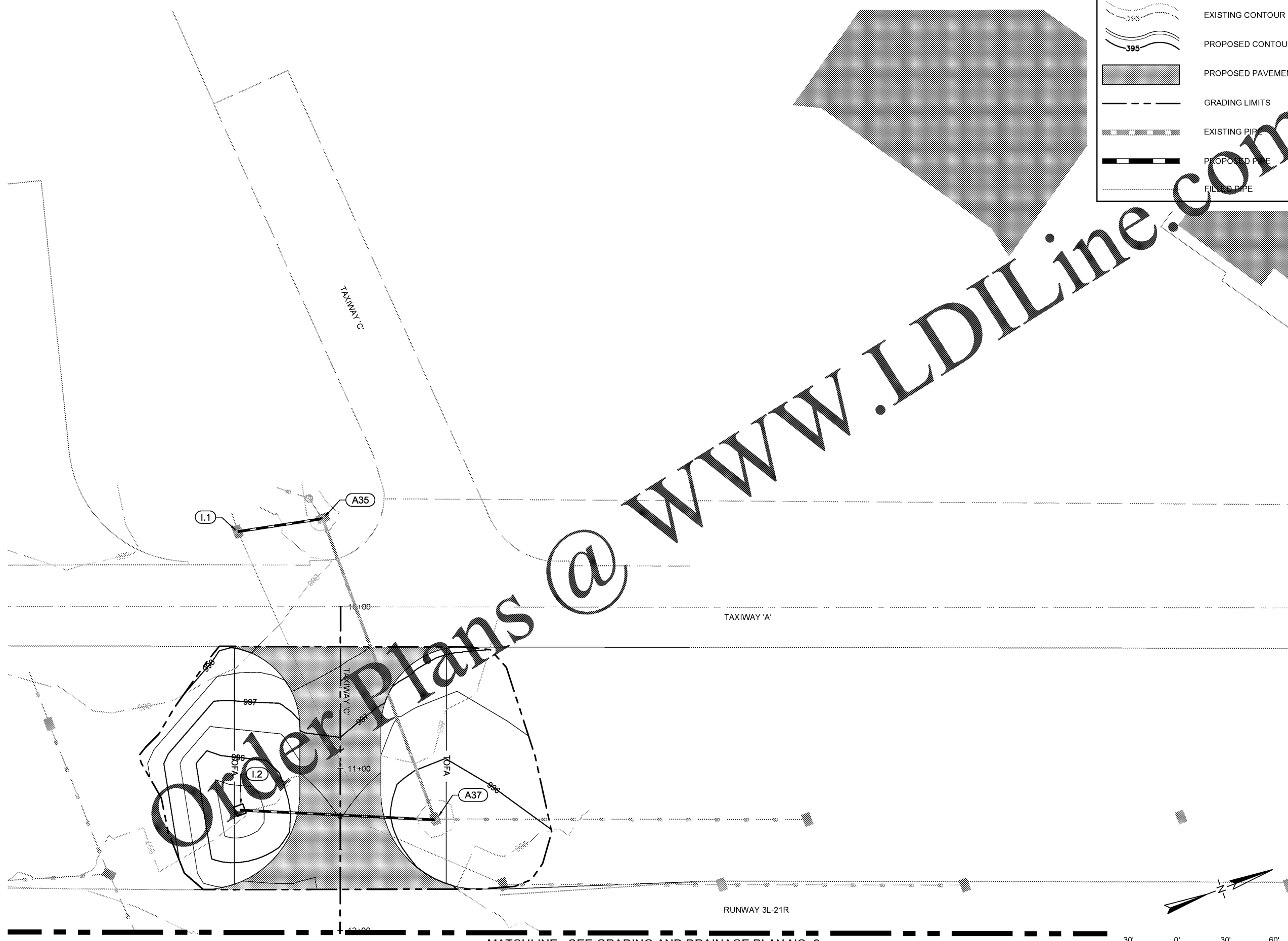
**1" = 30'**

Drawing Number:

**GP-1**

**LEGEND**

- EXISTING CONTOUR
- PROPOSED CONTOUR
- PROPOSED PAVEMENT
- GRADING LIMITS
- EXISTING PIPE
- PROPOSED PIPE
- FILLED PIPE



MATCHLINE - SEE GRADING AND DRAINAGE PLAN NO. 2

