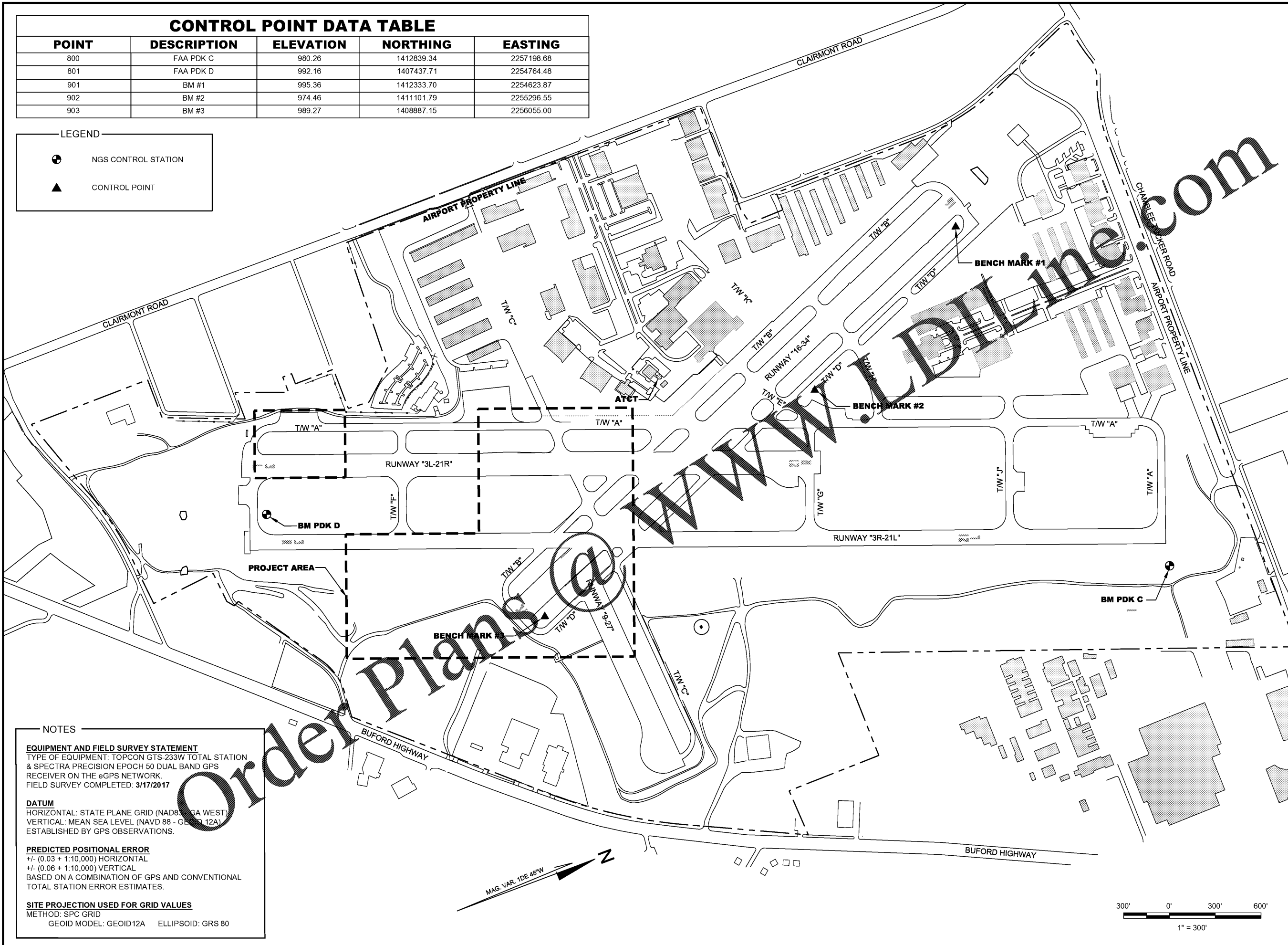


CONTROL POINT DATA TABLE				
POINT	DESCRIPTION	ELEVATION	NORTHING	EASTING
800	FAA PDK C	980.26	1412839.34	2257198.68
801	FAA PDK D	992.16	1407437.71	2254764.48
901	BM #1	995.36	1412333.70	2254623.87
902	BM #2	974.46	1411101.79	2255296.55
903	BM #3	989.27	1408887.15	2256055.00

LEGEND

-  NGS CONTROL STATION
-  CONTROL POINT



NOTES

EQUIPMENT AND FIELD SURVEY STATEMENT
 TYPE OF EQUIPMENT: TOPCON GTS-233W TOTAL STATION & SPECTRA PRECISION EPOCH 50 DUAL BAND GPS RECEIVER ON THE eGPS NETWORK.
 FIELD SURVEY COMPLETED: 3/17/2017

DATUM
 HORIZONTAL: STATE PLANE GRID (NAD83 - GA WEST)
 VERTICAL: MEAN SEA LEVEL (NAVD 88 - GEOID 12A)
 ESTABLISHED BY GPS OBSERVATIONS.

PREDICTED POSITIONAL ERROR
 +/- (0.03 + 1:10,000) HORIZONTAL
 +/- (0.06 + 1:10,000) VERTICAL
 BASED ON A COMBINATION OF GPS AND CONVENTIONAL TOTAL STATION ERROR ESTIMATES.


SITE PROJECTION USED FOR GRID VALUES
 METHOD: SPC GRID
 GEOID MODEL: GEOID12A ELLIPSOID: GRS 80



DEKALB PEACHTREE AIRPORT
 DEKALB COUNTY, GEORGIA

Michael Baker INTERNATIONAL

Designer: **MRP**
 Technician: **MRP**
 Checked by: **JWS**
 Project Number: **174297**



Notes:

REVISIONS			
No.	Description	Date	By

Project Name:

RUNWAY INCURSION MITIGATION IMPROVEMENTS (PDK 11)

Drawing Name:

AIRPORT BENCHMARK LAYOUT PLAN

ITB# 20-101257

Date: **FEBRUARY, 2020** Sheet Number: **12** of **72**
 Scale: **1" = 300'** Drawing Number: **BM-1**