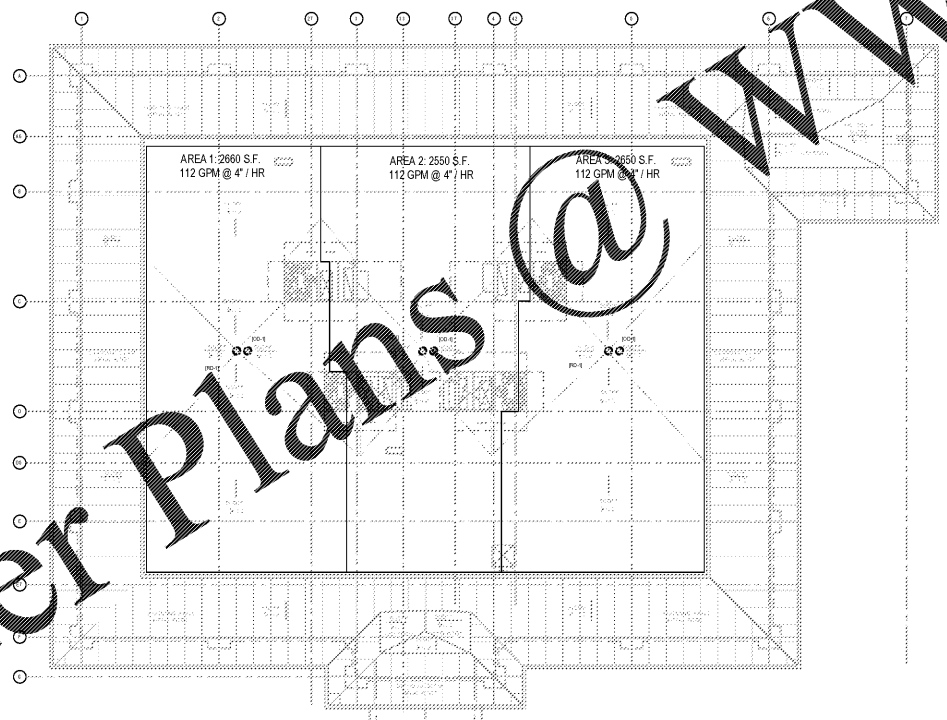
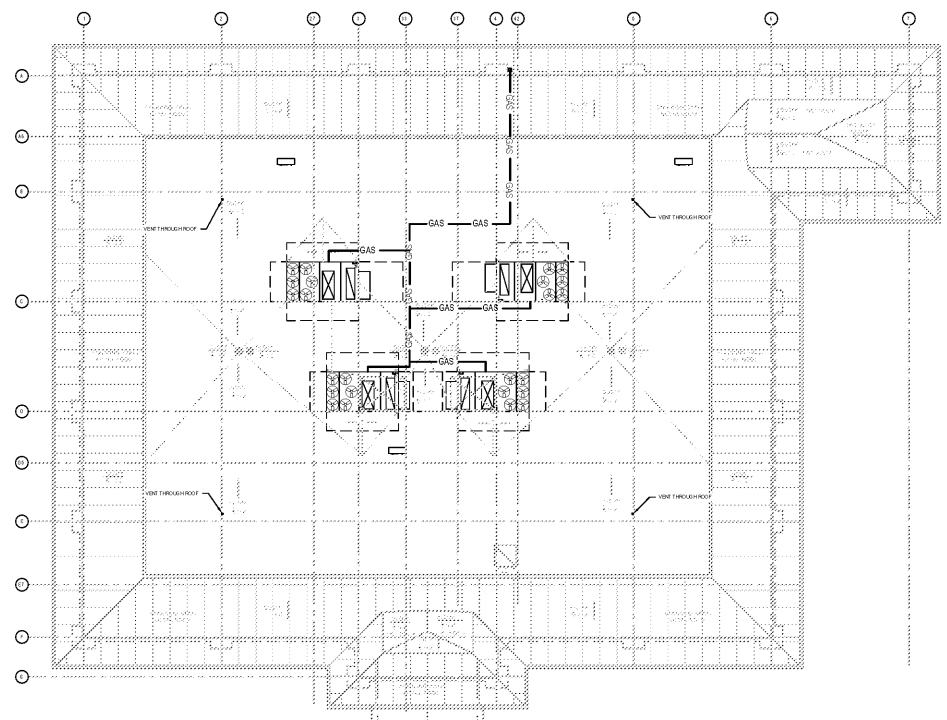


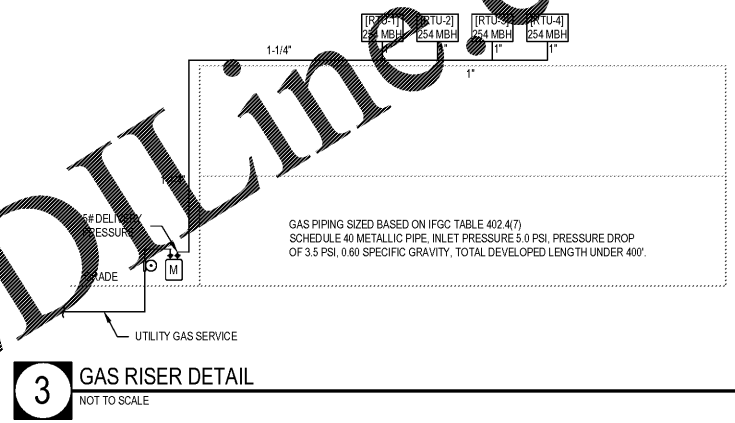
Order Plans @ WWW.LDILine.com



2 PLUMBING STORM PLAN - ROOF
SCALE: 1/16"=1'-0"



1 PLUMBING GAS & SANITARY VENT PLAN - ROOF
SCALE: 1/16"=1'-0"



3 GAS RISER DETAIL
NOT TO SCALE



JEFFERSON BROWNE GRESHAM ARCHITECTS
180 HUNTERTON ROAD, SUITE 1000
FACHREE CITY, GEORGIA 30509
770-638-9548
JEFFERSONBROWNEARCHITECTS.COM

REVISIONS	
NO.	DESCRIPTION

RENEWED MEDICAL BUILDING
CORE & SHELL ONLY

SOUTH FULTON, GEORGIA
PROJECT #19-2983

PROJECT 03/27/2020



BRIAN J. FAGAN - PROFESSIONAL ENGINEER
GA LICENSE NUM: 32550 - EXP: 12/31/2020
SEAL

MARCH 27, 2020
PERMIT SET

RELEASE DATE

Plumbing
Roof Plans

DRAWING TITLE
© COPYRIGHT 2020 JEFFERSON BROWNE GRESHAM ARCHITECTS, INC. THIS DOCUMENT IS AN INSTRUMENT OF SERVICE. IT REMAINS THE PROPERTY OF JEFFERSON BROWNE GRESHAM ARCHITECTS AND NO PART THEREOF MAY BE REPRODUCED IN ANY FORM WITHOUT WRITTEN PERMISSION FROM JEFFERSON BROWNE GRESHAM ARCHITECTS.



Drawn By: CH JS
Checked By: BF
PROJECT # 19-9883
SHEET 3 of 3

P300