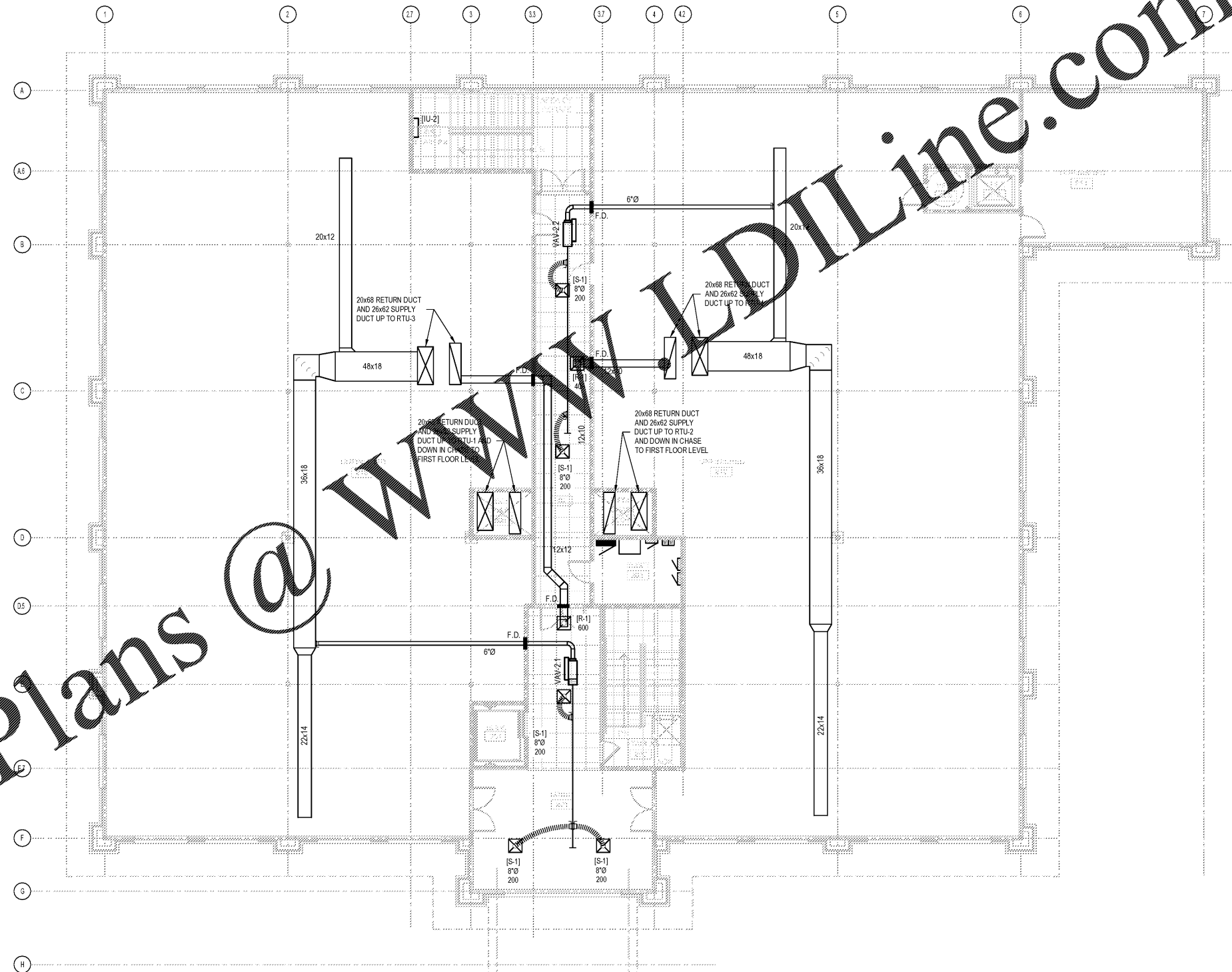


Order Plans @ [www.LDILine.com](http://www.LDILine.com)



**1** MECHANICAL PLAN - SECOND FLOOR  
SCALE: 1/8"=1'-0"



JEFFERSON BROWNE GRESHAM ARCHITECTS  
180 MADISON ROAD, SUITE 1000  
FARGEE CITY, GEORGIA 30809  
770-638-9548  
JEFFERSONBROWNEARCHITECTS.COM

REVISIONS

NO.	DESCRIPTION

RENEWED MEDICAL BUILDING  
CORE & SHELL ONLY

SOUTH FULTON, GEORGIA  
PROJECT #19-2983

PROJECT



BRIAN J. FAGAN - PROFESSIONAL ENGINEER  
GA LICENSE NUM: 32550 - EXP: 12/31/2020

MARCH 27, 2020

PERMIT SET

RELEASE DATE

Mechanical  
Plan

DRAWING TITLE

© COPYRIGHT 2020 JEFFERSON BROWNE GRESHAM ARCHITECTS, INC. THIS DOCUMENT IS AN INSTRUMENT OF SERVICE AND REMAINS THE PROPERTY OF JEFFERSON BROWNE GRESHAM ARCHITECTS AND NO PART THEREOF MAY BE REPRODUCED IN ANY FORM WITHOUT WRITTEN PERMISSION FROM JEFFERSON BROWNE GRESHAM ARCHITECTS.

FES PROJECT: 20007

**FES** Fagan Engineering Services, LLC  
M.E.P. ENGINEERING  
327 DAHLONEGA ST. STE 101B  
CUMMING, GA 30040  
(678) 648-4804

Drawn By:	CH, ES
Checked By:	BF
PROJECT #	M102
19-9883	SHEET 3 of 3