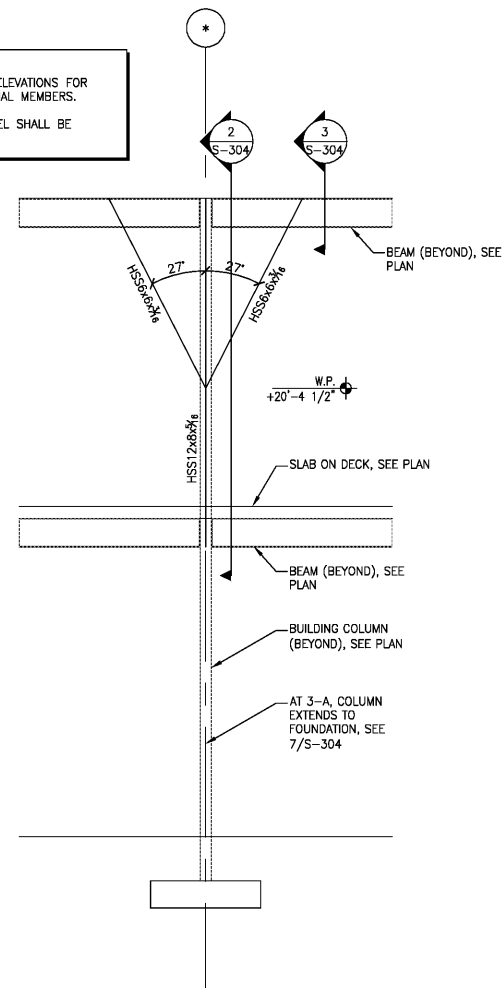
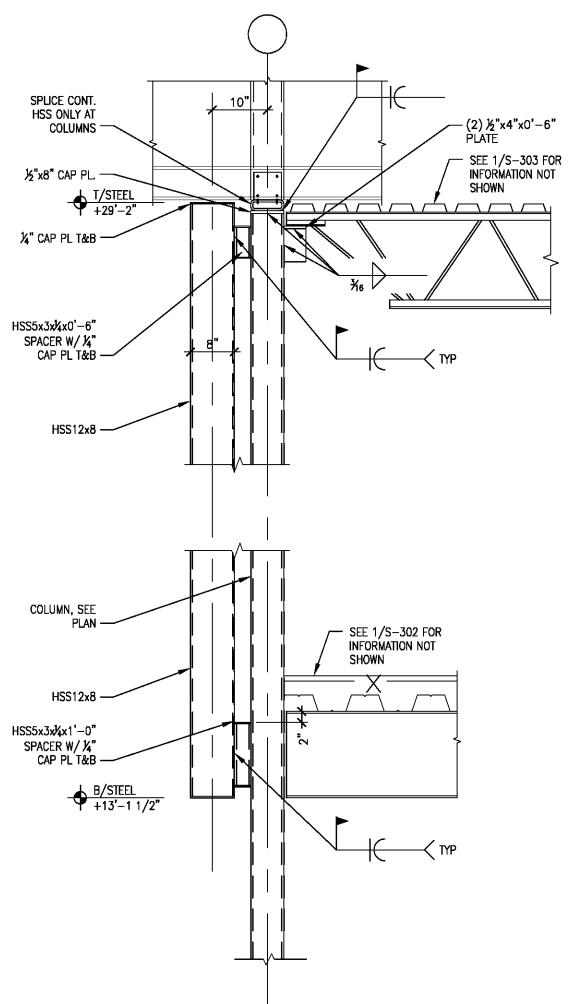


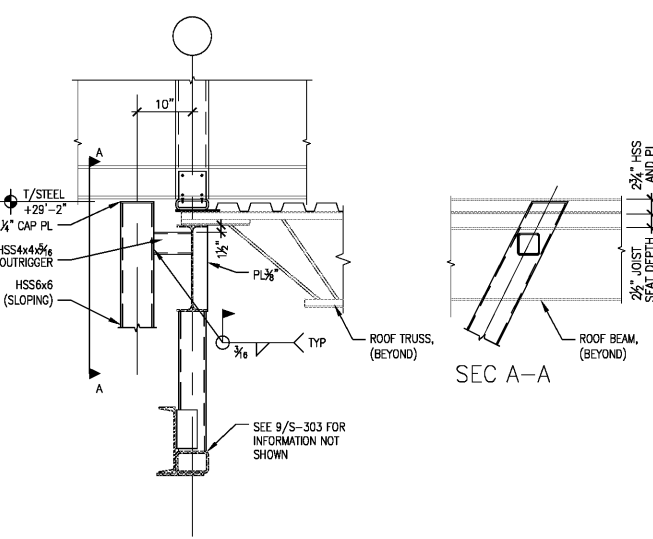
NOTE:
REFER TO ARCH. ELEVATIONS FOR LAYOUT OF DIAGONAL MEMBERS.
ALL EXPOSED STEEL SHALL BE AESS-2



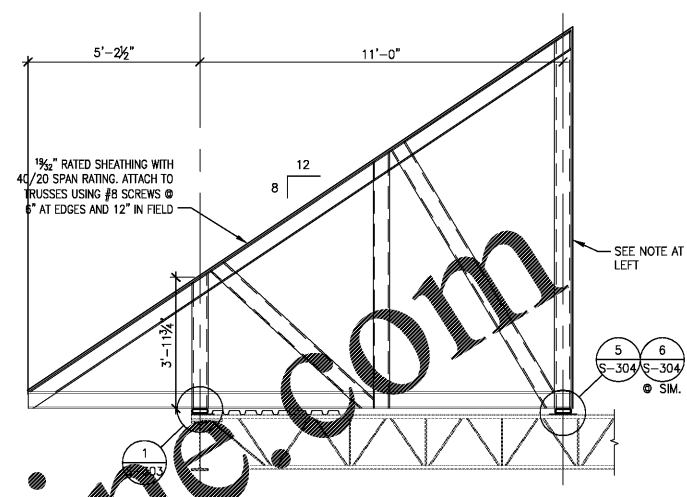
1 DECORATIVE COLUMN ELEVATION
SCALE: NONE



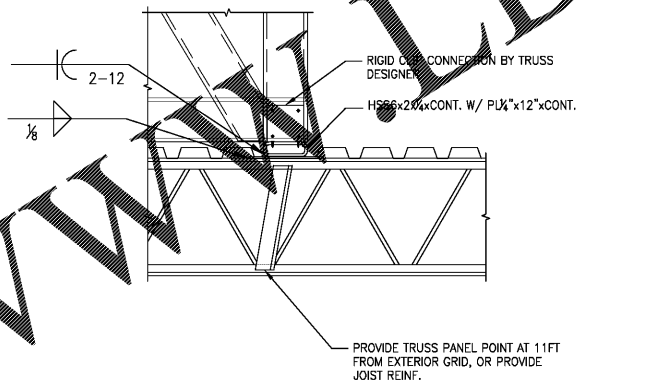
2 SECTION THROUGH COLUMN
SCALE: 3/4"=1'-0"



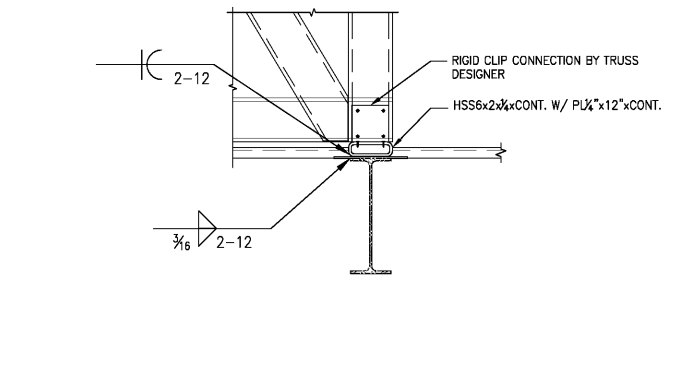
3 ROOF FRAMING DETAIL
SCALE: 3/4"=1'-0"



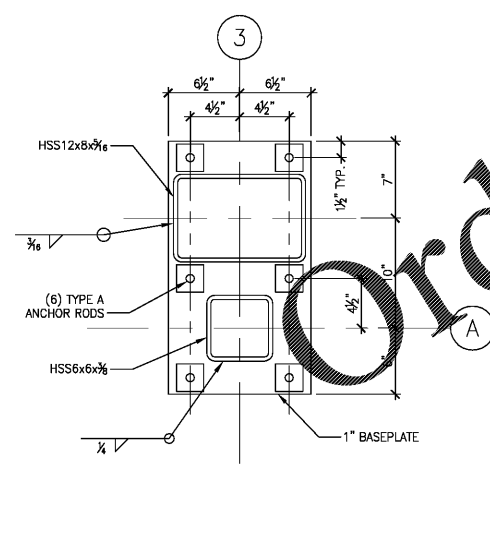
4 SECTION THROUGH TRUSS
SCALE: 3/8"=1'-0"



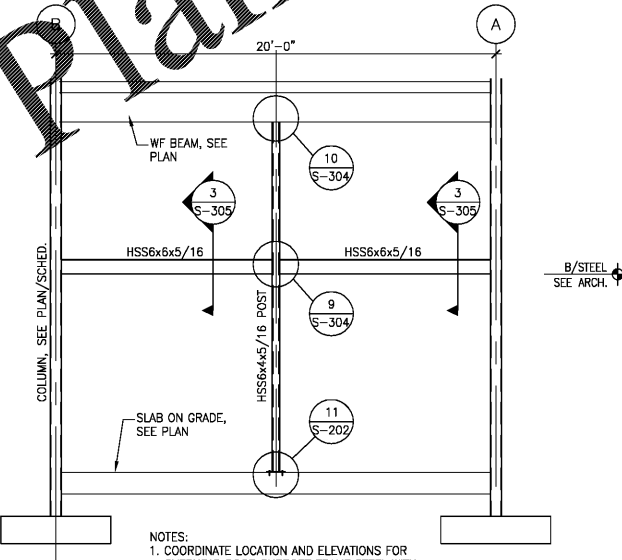
5 SECTION AT TRUSS BEARING
N.T.S.



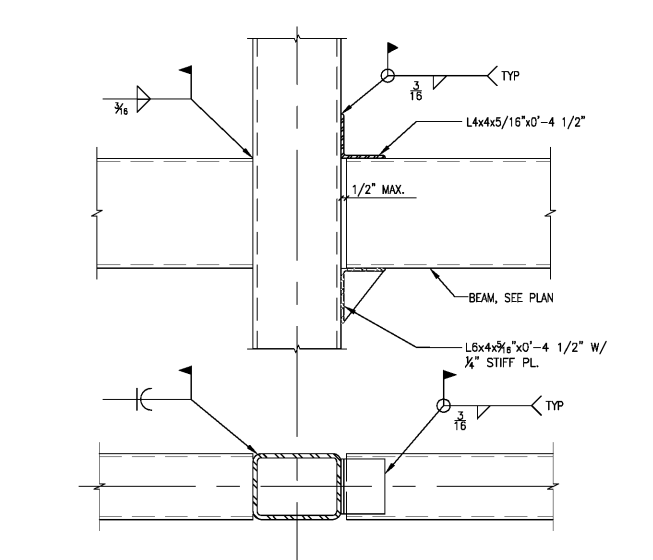
6 SECTION AT TRUSS BEARING
N.T.S.



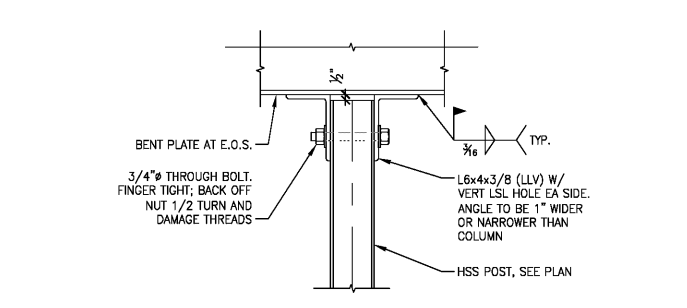
7 HSS COLUMN BASEPLATE
SCALE: 1 1/2"=1'-0"



8 OVERHEAD DOOR SUPPORT FRAME
NOT TO SCALE



9 HSS BEAM TO HSS COLUMN CONNECTION
SCALE: NONE



10 DETAIL AT POST CONNECTION
SCALE: 1-1/2"=1'-0"

NOTE:
PROVIDE STIFFENER PL & KICKER AS SHOWN IN DETAIL X/S-30X



JEFFERSON BROWNE GRESHAM ARCHITECTS
170 HUNTERTON RD., SUITE 1200
MARIETTA CITY, GEORGIA 30067
770-438-9949
JEFFERSONBROWNEARCHITECTS.COM

REVISIONS	
NO.	DESCRIPTION

RENEWED MEDICAL BUILDING
CORE & SHELL ONLY
SOUTH FULTON, GEORGIA
PROJECT #19-9883



PERMIT SET
RELEASED FOR CONSTRUCTION
MARCH 27, 2020
RELEASE DATE

SECTIONS AND DETAILS

DRAWING TITLE
© COPYRIGHT 2020 JEFFERSON BROWNE GRESHAM ARCHITECTS
THIS DOCUMENT IS AN INSTRUMENT OF SERVICE
REMAINS THE PROPERTY OF JEFFERSON BROWNE GRESHAM ARCHITECTS AND NO PART THEREOF MAY BE REPRODUCED IN ANY FORM WITHOUT WRITTEN PERMISSION FROM JEFFERSON BROWNE GRESHAM ARCHITECTS.

Drawn By:
Checked By:
DATE:
PROJECT # 19-9883



S-304