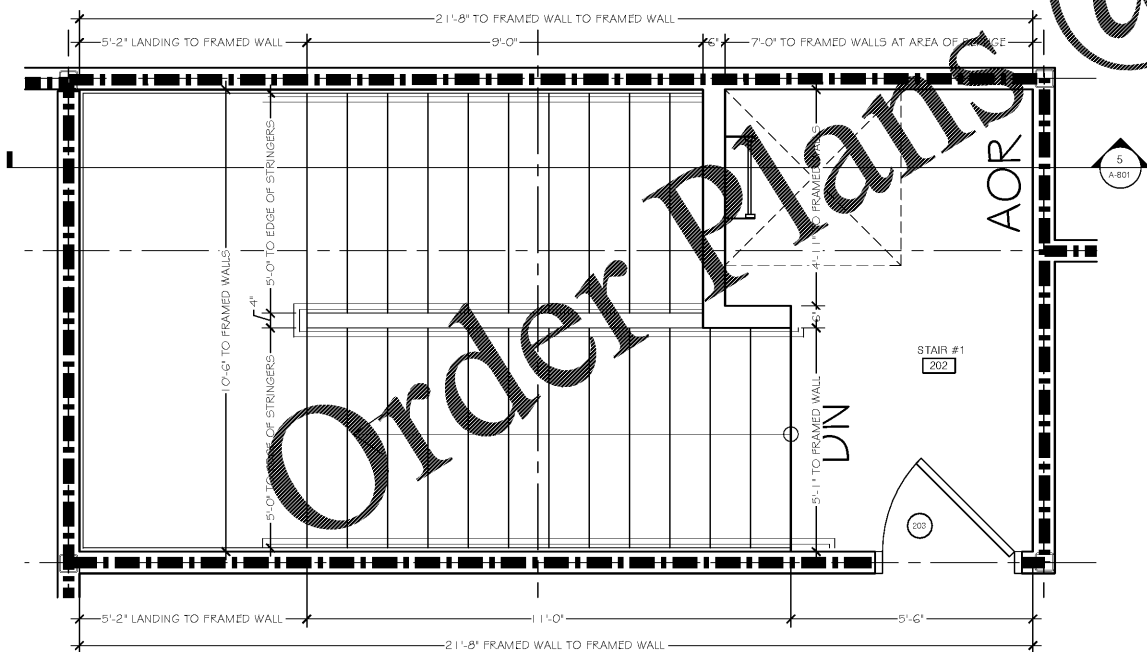
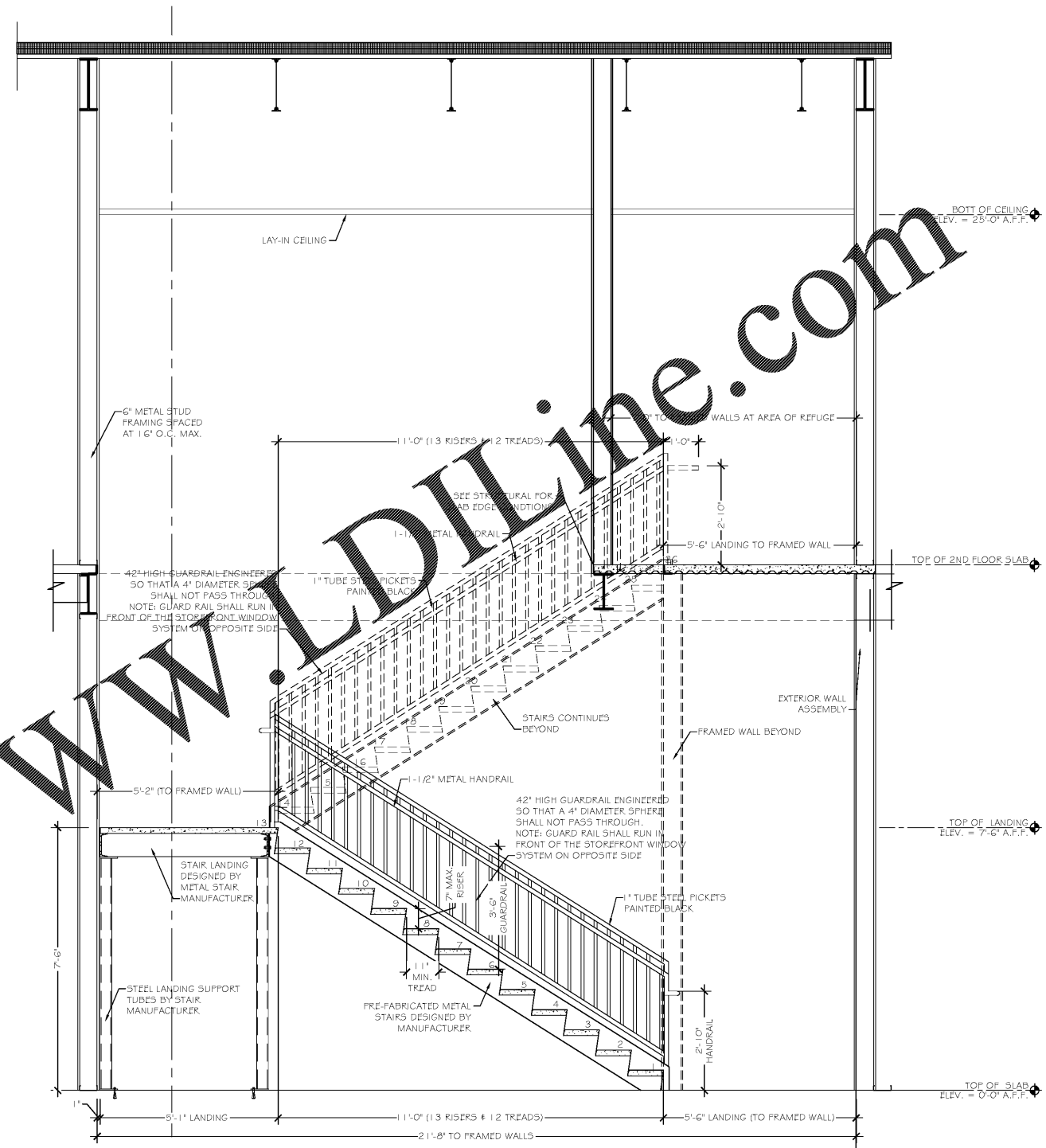


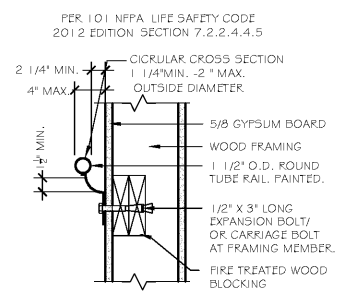
1 REAR STAIRWELL - 1ST FLOOR
1/2" = 1'-0"



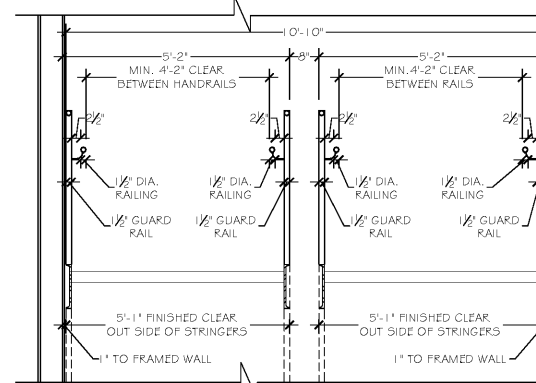
2 REAR STAIRWELL - 2ND FLOOR
1/2" = 1'-0"



5 BUILDING SECTION - STAIRWELL #1
1/2" = 1'-0"



3 TYPICAL RAILING CONNECTION AT WALL
1/2" = 1'-0"



4 TYPICAL TREAD & RAIL CLEARANCES AT STAIRWELL #1
1/2" = 1'-0"

- NOTES:
1. DIMENSIONS ARE TO METAL FRAMING. DESIGN METAL STAIR TO COMPENSATE FOR 5/8" FIRE RATED TYPE 'X' GYP. BD. WITHIN STAIRWELL.
 2. NO AREAS UNDER STAIR SHALL BE USED AS A ROOM, MECHANICAL ROOM OR BONUS SPACE (NO COMBUSTIBLES).
 3. METAL STAIRCASE: CONTRACTOR SHALL REVIEW & APPROVE SHOP DRAWINGS. SUBMIT TO ARCHITECT PRIOR TO FABRICATION FOR REVIEW & COORDINATION.
 4. SEE SHEET F-104 FOR ALL PENETRATIONS THROUGH FIRE RATED WALLS.
 5. PROVIDE NON-SKID STRIP ON EACH STEP.
 6. RISE SHALL BE MAX. 7" HIGH & TREAD SHALL BE MIN. 11" DEEP.
 7. METAL STAIRS & RAILINGS FINAL DESIGN BY METAL STAIR MANUFACTURER.

REVISIONS

NO.	DESCRIPTION
1	PLAN REVIEW 12-30-2019

RENEWED MEDICAL BUILDING
CORE & SHELL ONLY

SOUTH FULTON, GEORGIA
PROJECT #19-2983



MARCH 27, 2020

PERMIT SET

RELEASE DATE

STAIR SECTIONS
& DETAILS

DRAWING TITLE

© COPYRIGHT 2020 JEFFERSON BROWNE GRESHAM ARCHITECTS, INC. THIS DOCUMENT IS AN INSTRUMENT OF SERVICES. IT REMAINS THE PROPERTY OF JEFFERSON BROWNE GRESHAM ARCHITECTS AND NO PART THEREOF MAY BE REPRODUCED IN ANY FORM WITHOUT WRITTEN PERMISSION FROM JEFFERSON BROWNE GRESHAM ARCHITECTS.

Drawn By: J.C.
Checked By: R.G.J.B.
PROJECT # 19-2983
SHEET 41 OF 37

A-801