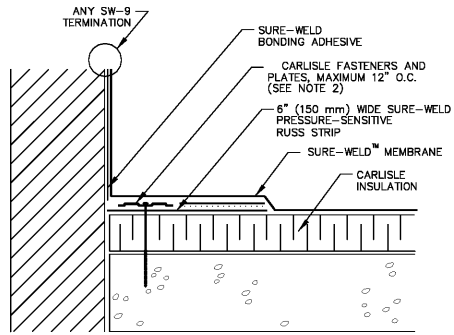


Carlisle SynTec Incorporated  
Sure-Weld<sup>®</sup> ROOFING SYSTEM

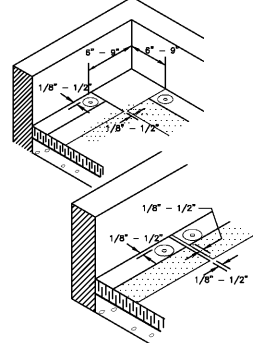
CREASE MEMBRANE AT ANGLE CHANGE TO LIMIT BRIDGING TO 3/4" (19 mm) MAXIMUM



SURE-SEAL HP-250 PRIMER MUST BE APPLIED TO BACK SIDE OF MEMBRANE PRIOR TO ADHERING MEMBRANE TO PRESSURE-SENSITIVE RUSS

NOTES:

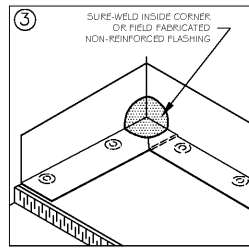
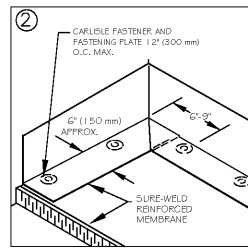
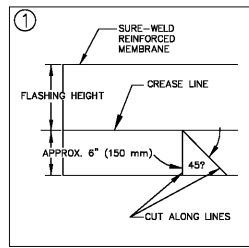
- FOR CORNER APPLICATION, SEE DETAIL SW-15E.
- ON MECHANICALLY FASTENED SYSTEMS, HP-X FASTENERS AND PIRANHA PLATES OR HP-XTRA FASTENERS AND PIRANHA XTRA PLATES ARE REQUIRED OVER STEEL AND WOOD DECKS. ON CONCRETE DECKS, CD-10, OR HD 14-10 FASTENERS ARE USED WITH PIRANHA PLATES.
- WHEN COUNTER-FLASHING IS USED FOR TERMINATION, BONDING ADHESIVE IS NOT REQUIRED WHEN FLASHING HEIGHT IS 12" (300 mm) OR LESS. WHEN COPING OR TERMINATION BAR IS USED, ADHESIVE MAY BE ELIMINATED WHEN FLASHING HEIGHT IS 18" (500 mm) OR LESS.



1 WALL FLASHING/PRESSURE-SENSITIVE RUSS NOT TO SCALE SW-12B

© 2007 CARLISLE SYNTec INCORPORATED

Carlisle SynTec Incorporated  
Sure-Weld<sup>®</sup> ROOFING SYSTEM



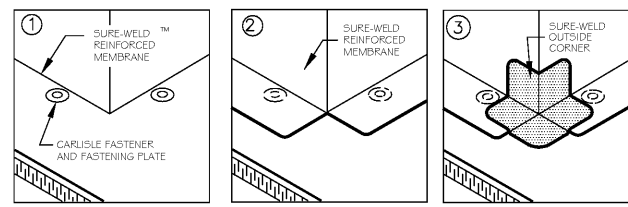
NOTES:

- BEGIN INSTALLATION OF FASTENING PLATES 6" TO 9" (150 TO 230 mm) FROM THE CORNER.
- POSITION FASTENING PLATES 1/2" TO 1" (13 mm TO 25 mm) FROM EDGE OF MEMBRANE.
- APPROXIMATELY 1/8" (3 mm) DIAMETER BEAD OF CUT-EDGE SEALANT IS REQUIRED ON CUT EDGES OF SURE-WELD REINFORCED MEMBRANE.
- REFER TO SPECIFICATION FOR ACCEPTABLE CARLISLE FASTENERS AND PLATES.

2 INSIDE CORNER FLASHING NOT TO SCALE SW-15A

© 2007 CARLISLE SYNTec INCORPORATED

Carlisle SynTec Incorporated  
Sure-Weld<sup>®</sup> ROOFING SYSTEM



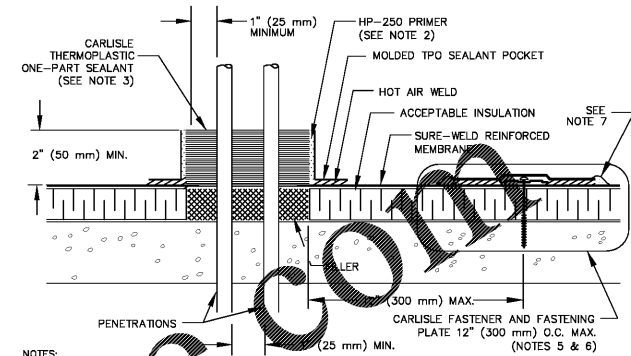
NOTES:

- BEGIN INSTALLATION OF FASTENING PLATES APPROXIMATELY 6" (150 mm) FROM CORNER.
- POSITION FASTENING PLATES 1/2" TO 1" (13 mm TO 25 mm) FROM EDGE OF DECK MEMBRANE.
- APPROXIMATELY 1/8" (3 mm) DIAMETER BEAD OF CUT-EDGE SEALANT IS REQUIRED ON CUT EDGES OF SURE-WELD REINFORCED MEMBRANE.
- REFER TO SPECIFICATION FOR ACCEPTABLE FASTENERS AND PLATES.

3 PRE-MOLDED OUTSIDE CORNER NOT TO SCALE SW-15C

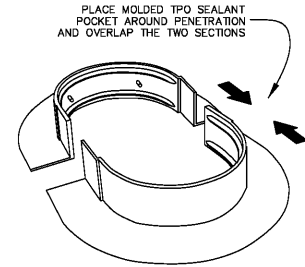
© 2007 CARLISLE SYNTec INCORPORATED

Carlisle SynTec Incorporated  
Sure-Weld<sup>®</sup> ROOFING SYSTEM



NOTES:

- TEMPERATURE OF PIPE MUST NOT EXCEED 120° F (49° C).
- HP-250 PRIMER MUST BE APPLIED TO ALL INSIDE SURFACE AND PENETRATIONS PRIOR TO FILLING WITH SEALANT.
- POCKET COMPLETELY WITH THERMOPLASTIC ONE-PART SEALANT UNTIL RM IS COVERED WITH SEALANT. ENSURE ALL VOIDS ARE FILLED.
- SEALANT POCKET TO BE MINIMUM 1" (25 mm) FROM PENETRATION ON ANY SIDE.
- ON MECHANICALLY-FASTENED SYSTEMS, INSTALL A MINIMUM OF 4 FASTENING PLATES AROUND SEALANT POCKET WITH A DIAMETER UP TO 6" (150 mm). ADDITIONAL FASTENING PLATES WILL BE REQUIRED FOR SEALANT POCKET GREATER THAN 6" IN DIAMETER AND SHALL BE SPACED 12" (300 mm) ON CENTER MAXIMUM. FASTENERS/PLATES ARE NOT REQUIRED ON ADHERED SYSTEMS UNLESS SEALANT POCKET DIAMETER EXCEEDS 12" (300 mm).
- REFER TO "ATTACHMENT I MEMBRANE FASTENING CRITERIA" FOR PROPER FASTENERS AND PLATES.
- APPROXIMATELY 1/8" (3 mm) DIAMETER BEAD OF CUT-EDGE SEALANT IS REQUIRED ON CUT EDGES OF SURE-WELD REINFORCED MEMBRANE.

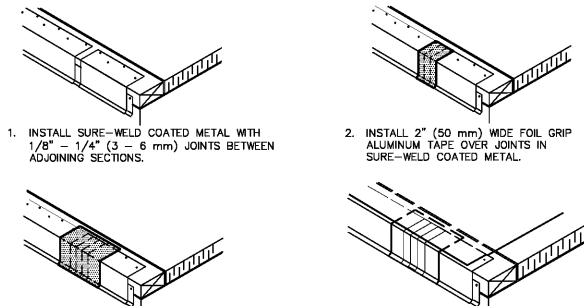


REFER TO TECHNICAL DATA BULLETIN (TDB) FOR STEP-BY-STEP INSTALLATION PROCEDURES

4 MOLDED TOP SEALANT POCKET NOT TO SCALE SW-16B

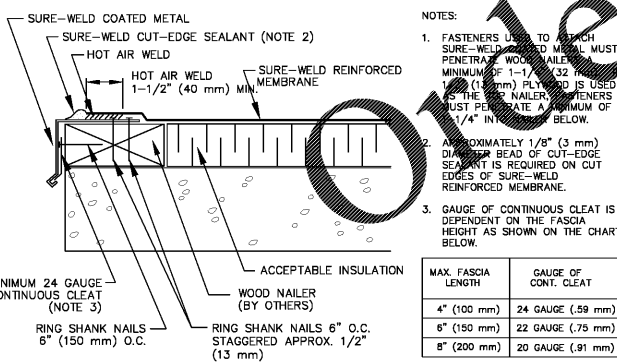
© 2007 CARLISLE SYNTec INCORPORATED

Carlisle SynTec Incorporated  
Sure-Weld<sup>®</sup> ROOFING SYSTEM



HEAT WELD 6" (150 mm) WIDE PIECE OF SURE-WELD NON-REINFORCED MEMBRANE OVER JOINT.

POSITION SURE-WELD REINFORCED MEMBRANE AND HEAT WELD TO SURE-WELD COATED METAL A MINIMUM OF 1-1/2" (40 mm) AS SHOWN BELOW.



NOTES:

- FASTENERS USED TO ATTACH SURE-WELD TO METAL MUST PENETRATE WOOD NAILE MINIMUM OF 1-1/2" (32 mm) DIAMETER BEAD OF CUT-EDGE SEALANT IS REQUIRED ON CUT EDGES OF SURE-WELD REINFORCED MEMBRANE.
- APPROXIMATELY 1/8" (3 mm) DIAMETER BEAD OF CUT-EDGE SEALANT IS REQUIRED ON CUT EDGES OF SURE-WELD REINFORCED MEMBRANE.
- GAUGE OF CONTINUOUS CLEAT IS DEPENDENT ON THE FASCIA HEIGHT AS SHOWN ON THE CHART BELOW.

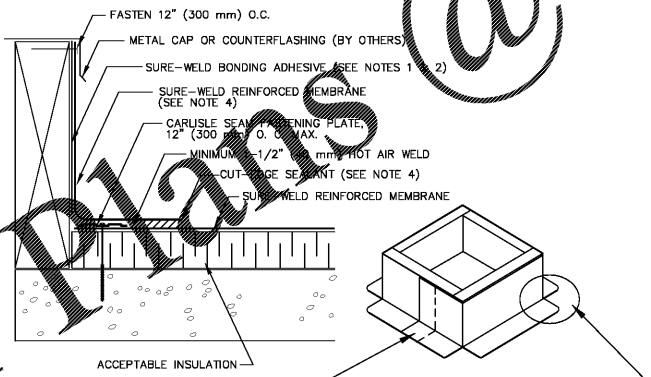
MAX. FASCIA LENGTH	GAUGE OF CONT. CLEAT
4" (100 mm)	24 GAUGE (.59 mm)
6" (150 mm)	22 GAUGE (.78 mm)
8" (200 mm)	20 GAUGE (.91 mm)

5 COATED METAL DRIP EDGE NOT TO SCALE SW-1D

© 2007 CARLISLE SYNTec INCORPORATED

Carlisle SynTec Incorporated  
Sure-Weld<sup>®</sup> ROOFING SYSTEM

CREASE MEMBRANE AT ANGLE CHANGE TO LIMIT BRIDGING TO 3/4" (19 mm) MAXIMUM



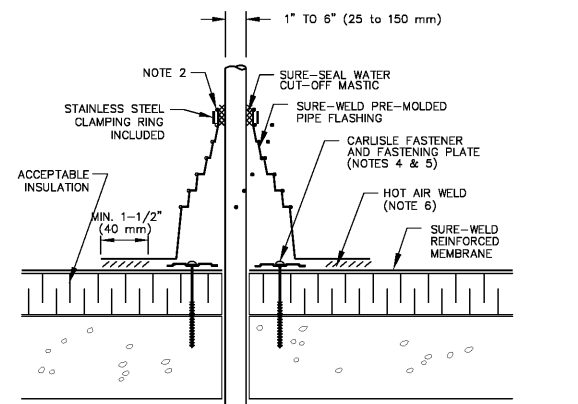
NOTES:

- BONDING ADHESIVE IS NOT REQUIRED WHEN FLASHING HEIGHT IS 12" (300 mm) OR LESS AND MEMBRANE IS FASTENED "AS SHOWN" AT TOP OF CURB.
- WHEN CARLISLE TERMINATION BAR IS USED BENEATH THE COUNTERFLASHING, BONDING ADHESIVE CAN BE ELIMINATED WHEN THE FLASHING HEIGHT IS 18" (500 mm) OR LESS.
- FLASHING MEMBRANE FASTENED APPROXIMATELY 12" ON CENTER. IF FASTENER PENETRATES METAL COUNTERFLASHING, USE NEOPRENE WASHER OR APPLY WATER CUT-OFF MASTIC UNDER COUNTERFLASHING OR CAULK FASTENER HEAD.
- APPROXIMATELY 1/8" (3 mm) BEAD OF CUT-EDGE SEALANT IS REQUIRED ON CUT EDGES OF SURE-WELD REINFORCED MEMBRANE.
- REFER TO SPECIFICATION FOR ACCEPTABLE CARLISLE FASTENERS AND PLATES.
- FOR CORNER FLASHING, REFER TO APPLICABLE SW-15 DETAIL.

6 CURB FLASHING NOT TO SCALE SW-5A

© 2007 CARLISLE SYNTec INCORPORATED

Carlisle SynTec Incorporated  
Sure-Weld<sup>®</sup> ROOFING SYSTEM



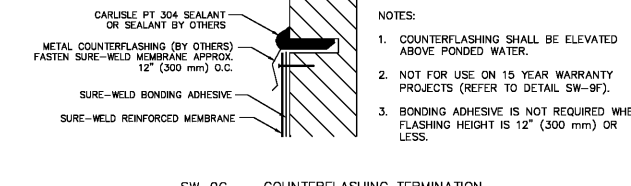
NOTES:

- REMOVE ALL LEAD AND OTHER FLASHING.
- TEMPERATURE OF PIPE MUST NOT EXCEED 120° F (49° C).
- PIPE SEAL MUST HAVE INTACT RIB AT TOP EDGE, REGARDLESS OF PIPE DIAMETER.
- INSTALL 3 FASTENERS AND PLATES AROUND PIPE EQUALLY SPACED. FASTENERS MAY ALSO BE POSITIONED MAXIMUM 12" (300 mm) FROM PIPE, FASTENED 12" ON CENTER AND FLASHED WITH SURE-WELD REINFORCED MEMBRANE. FASTENERS/PLATES ARE NOT REQUIRED ON ADHERED SYSTEMS UNLESS PIPE DIAMETER EXCEEDS 18" (500 mm).
- IF PLATES CANNOT BE INSTALLED AS SHOWN THEY CAN BE POSITIONED OUTSIDE THE PIPE FLASHING FLANGE AS SHOWN ON DETAIL SW-8F.
- PIPE FLASHING DECK FLANGE MUST BE HOT AIR WELDED A MINIMUM OF 1-1/2" (40 mm) BEYOND FASTENING PLATES.
- INSTALL A SECTION OF SURE-WELD REINFORCED MEMBRANE OVER SPLICE INTERSECTIONS PRIOR TO INSTALLING PRE-MOLDED PIPE FLASHING.

7 SURE-WELD PRE-MOLDED PIPE FLASHING NOT TO SCALE SW-8A

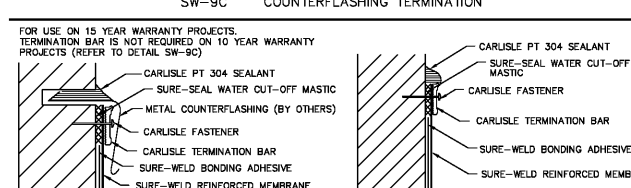
© 2007 CARLISLE SYNTec INCORPORATED

Carlisle SynTec Incorporated  
Sure-Weld<sup>®</sup> ROOFING SYSTEM

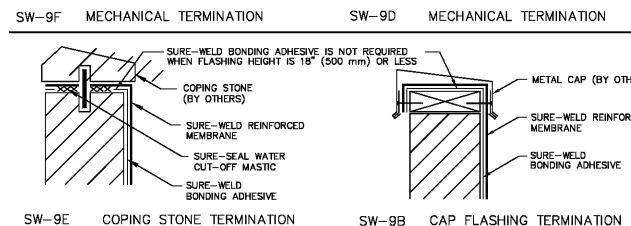


NOTES:

- COUNTERFLASHING SHALL BE ELEVATED ABOVE PONDED WATER.
- NOT FOR USE ON 15 YEAR WARRANTY PROJECTS (REFER TO DETAIL SW-9F).
- BONDING ADHESIVE IS NOT REQUIRED WHEN FLASHING HEIGHT IS 12" (300 mm) OR LESS.



- APPLY ON HARD SMOOTH SURFACE ONLY; NOT FOR USE ON WOOD.
- DO NOT WRAP COMPRESSION TERMINATION AROUND CORNERS.
- FASTENERS OF METAL BAR MUST PROVIDE CONSTANT COMPRESSION ON WATER CUT-OFF MASTIC.
- ALLOW 1/4" TO 1/2" (6 TO 13 mm) SPACING BETWEEN CONSECUTIVE LENGTHS OF TERMINATION BAR.
- BONDING ADHESIVE IS NOT REQUIRED WHEN FLASHING IS 18" (500 mm) OR LESS.



8 FLASHING TERMINATIONS NOT TO SCALE SW-9

© 2007 CARLISLE SYNTec INCORPORATED

REVISIONS

NO.	DESCRIPTION