

FIGURE 1:
HARDI-PLANK LAP SIDING CAN BE INSTALLED OVER BRACED WOOD OR STEEL STUDS SPACED A MAXIMUM OF 24" O.C. OR DIRECTLY TO MINIMUM 7/16" THICK OSB SHEATHING. HARDI-PLANK LAP SIDING CAN ALSO BE INSTALLED OVER FOAM INSULATION UP TO 1" THICK. IRREGULARITIES IN FRAMING, SHEATHING, AND/OR FOAM INSULATION CAN MIRROR THROUGH THE FINISHED APPLICATION. A WEATHER-RESISTIVE BARRIER IS REQUIRED. INSTALL HARDI-PLANK SIDING WITH JOINTS BUTTED IN MODERATE CONTACT. OPTIONALLY, INSTALL THE LAP SIDING WITH A MAXIMUM 1/8" GAP AND CAULK THE JOINT.

THE FIRST COURSE OF ANY WALL SHOULD BE INSTALLED OVER A 1/4" LATH STRIP TO ENSURE A CONSISTENT PLANK ANGLE.

USE A WEATHER-RESISTIVE BARRIER IN ACCORDANCE WITH: BOCA NATIONAL BUILDING CODE SECTION 1403.3; SBCCI STANDARD BUILDING CODE SECTION 2303.3; ICBO UNIFORM BUILDING CODE SECTION 1402.1; OR CABO ONE-AND-TWO FAMILY DWELLING CODE SECTION 703.2.1.

NOTE: SOME BUILDING CODES EXEMPT THE USE OF WEATHER-RESISTIVE BARRIERS OVER "WATER-REPELLENT PANEL SHEATHING" OR EXTERIOR PANELS CLASSIFIED AS "WEATHER-RESISTIVE BARRIERS." JAMES HARDIE RECOMMENDS THE USE OF "BUILDING PAPER TYPE" WEATHER-RESISTIVE BARRIERS WITH ALL SIDING PRODUCTS. JAMES HARDIE WILL ASSUME NO RESPONSIBILITY FOR MOISTURE WITHIN THE WALL.

FIGURE 2:
INSTALL HARDIPANEL/HARDIPLANK SUCH THAT THEY ARE NOT IN GROUND CONTACT AND NOT SUBJECT TO STANDING WATER.

FIGURE 3:
AT THE JUNCTURE OF THE ROOF AND VERTICAL SURFACES, FLASHING AND COUNTER FLASHING SHALL BE PROVIDED PER THE ROOFING MANUFACTURER'S INSTRUCTIONS. PROVIDE A 1"-2" CLEARANCE BETWEEN THE ROOFING AND BOTTOM EDGE OF SIDING OR AS RECOMMENDED BY THE ROOFING MANUFACTURER (SEE FIGURE 3).

FIGURE 4:
HARDI-PLANK SIDING CANNOT BE BLIND NAILED 24" O.C. 1 1/2" WIDE HARDI-PLANK CANNOT BE BLIND NAILED. WHEN BLIND NAILING 9-1/4" OR 9-1/2" HARDI-PLANK, USE 1 1/4" GA. ROOFING NAIL (1-1/4" LONG).

CORROSION RESISTANT NAILS (GALVANIZED OR STAINLESS STEEL)
1) 6D (0.18" SHANK X 0.267" HD X 2" LONG)
2) SIDING NAIL (0.089" SHANK X 0.221" HD X 2" LONG)
3) 1 1/4" GA. ROOFING NAIL (0.121" SHANK X 0.371" HD X 1-1/4" LONG)

CORROSION RESISTANT SCREWS
1) RIBBED BUGLE-HEAD OR EQUIVALENT (NO. 8-18 X 0.323" HD X 1-5/8" LONG) SCREWS MUST PENETRATE 1/4" OR 3 THREADS INTO METAL FRAMING.

FIGURE 5:
1) SHINGLES BUTTED AGAINST CORNER BOARDS.
2) SHINGLES BUTTED AGAINST SQUARE WOOD STRIP ON INSIDE CORNER, FLASHING BEHIND.
3) LACED OUTSIDE CORNER.
4) LACED INSIDE CORNER.

FIGURE 6 (6.1, 6.2, & 6.3):
HARDI-SOFT PANELS MAY BE INSTALLED OVER EITHER METAL OR WOOD FRAMING MEMBERS COMPLYING WITH THE LOCAL BUILDING CODE, INCLUDING THE USE OF WEATHER-RESISTIVE BARRIERS WHERE REQUIRED. APPLY SOFFIT PANELS TO NOMINAL 2X4 FRAMING MEMBERS SPACED A MAXIMUM OF 24" O.C., WITH THE LONG DIMENSION PERPENDICULAR TO THE FRAMING. FASTENERS ARE INSTALLED 3/8" FROM THE EDGE OF THE BOARD AND 2" IN FROM THE CORNERS.

FIGURE 7:
FASTENING RECOMMENDATIONS ON FASCIA (DO NOT OVERDRIVE NAILS - FLUSH ONLY)

- 1) USE ONLY CORROSION RESISTANT NAILS (6D, 8D).
- 2) FASTENERS MUST BE OF SUFFICIENT LENGTH TO PENETRATE WOOD (STUD) A MINIMUM OF 1"
- 3) STAY 1/2" OFF THE EDGE WHEN NAILING.
- 4) STAY 2" OFF THE CORNER OF TRIM BOARDS WHEN NAILING.
- 5) HARDIE FASCIA MUST BE FASTENED TO A WOOD SUB-FASCIA. WHEN USING 5-1/2" FASCIA YOU MUST HAVE A 2X4" SUB-FASCIA, 7-1/2" FASCIA MUST HAVE A 2X6" SUB-FASCIA, AND 1 1/2" FASCIA MUST HAVE A 2X1 0" WOOD SUB-FASCIA.
- 6) HARDIE FASCIA JOINTS MAY BE BUTTED TIGHTLY OR MITERED.
- 7) USE 2 NAILS SPACED A MINIMUM OF 2" APART EVERY 16" ON CORNERS, FASCIA, OR WINDOW APPLICATIONS, ETC.
- 8) WHEN USING FOR BRICK FRIEZE, 4" FASCIA MUST HAVE A 2X4" WOOD NAILER (1" X 4" IS TO THIN).

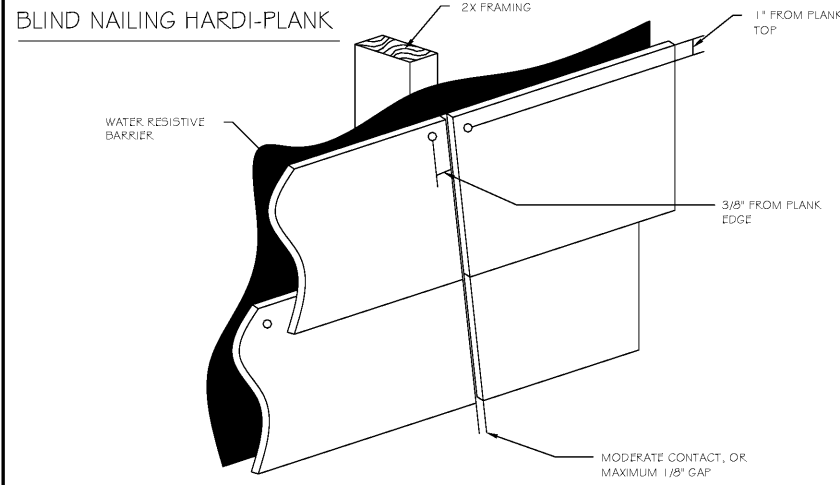
FIGURE 8:
NAILING: POSITION NAILS NO CLOSER THAN 3/4" AND NO FURTHER THAN 2" FROM THE SIDE OF EDGE OF THE TRIM BOARD, AND NO CLOSER THAN 1" FROM ENDS, AS ILLUSTRATED AT BELOW. SPACE FASTENERS A MAXIMUM OF 16" O.C.

WHEN SECURING HARDI-TRIM BOARD OVER HARDI-PLANK SIDING, FASTEN THE TRIM BY NAILING THROUGH THE TRIM AND UNDERLAYING SIDING INTO A STUD, OR ALTERNATIVELY INTO THE CODE COMPLYING SHEATHING ONLY. NAILS MUST PENETRATE A MINIMUM OF 3/4" OR THE FULL THICKNESS OF THE SHEATHING. ADDITIONAL FASTENERS MAY BE REQUIRED TO INSURE THE TRIM IS ADEQUATELY SECURED.

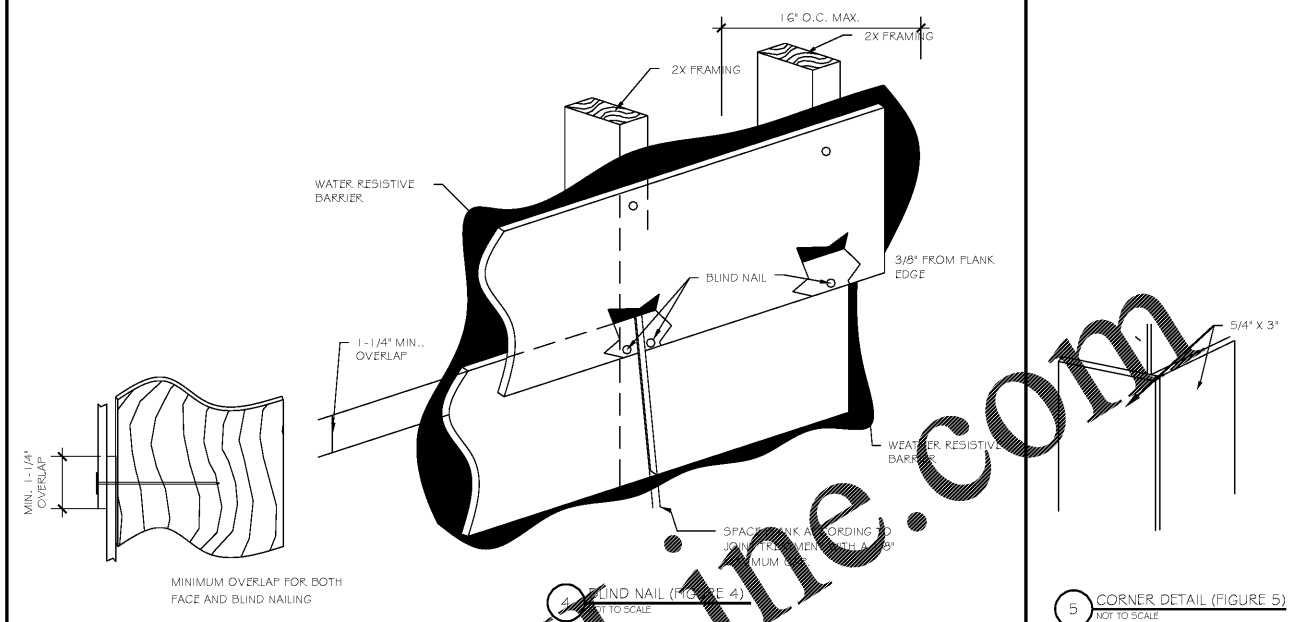
FOR FRIEZE BOARD APPLICATIONS OVER PREVIOUSLY APPLIED SIDING, A TRIM MAY BE REQUIRED TO CREATE AN EVEN LOOK (SEE INST. AT RIGHT).

1) WEATHER-RESISTIVE BARRIERS: USE A WEATHER-RESISTIVE BARRIER IN ACCORDANCE WITH: BOCA NATIONAL BUILDING CODE SECTION 1403.3; SBCCI STANDARD BUILDING CODE SECTION 2303.3; ICBO UNIFORM BUILDING CODE SECTION 1402.1; OR CABO ONE AND TWO-FAMILY DWELLING CODE SECTION 703.2.1

NOTE: MANY BUILDING CODES EXEMPT THE USE OF WEATHER RESISTIVE BARRIERS OVER "WATER-REPELLENT SHEATHING" OR EXTERIOR PANELS CLASSIFIED AS "WEATHER-RESISTIVE BARRIERS." HOWEVER, IN MOST CASES WHERE A WEATHER-RESISTIVE BARRIER IS NOT USED, WIND DRIVEN RAIN AND SNOW MAY PENETRATE THE UNPROTECTED WALL CAVITY. THEREFORE, THE USE OF "BUILDING PAPER TYPE" WEATHER-RESISTIVE BARRIERS WITH ALL SIDING PRODUCTS IS RECOMMENDED.

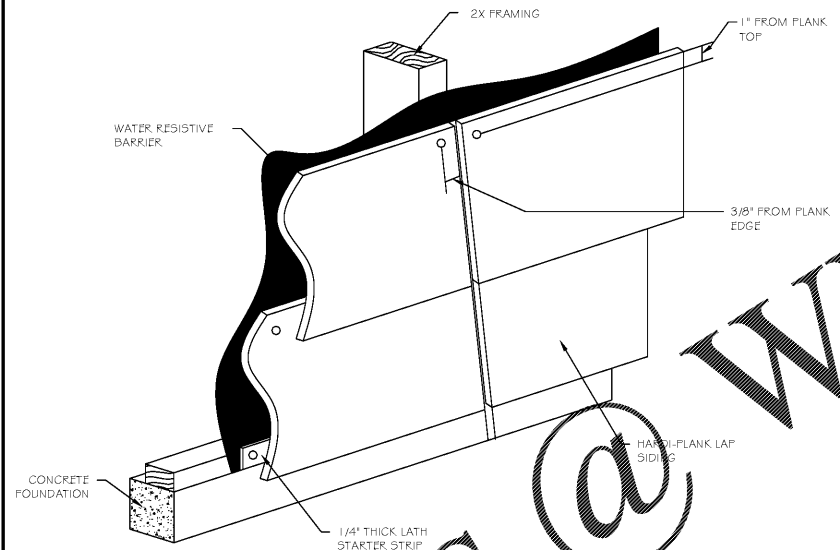


1 FRAMING REQUIREMENTS (FIGURE 1)
NOT TO SCALE

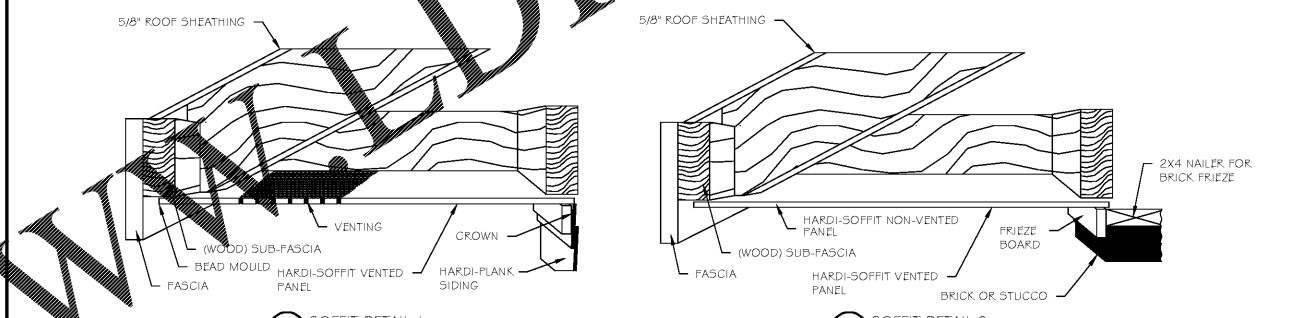


4 BLIND NAIL (FIGURE 4)
NOT TO SCALE

5 CORNER DETAIL (FIGURE 5)
NOT TO SCALE

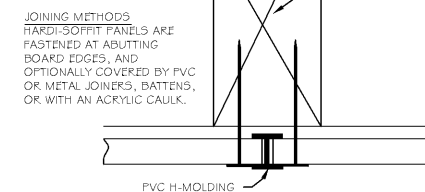


2 GRADE CLEARANCE (FIGURE 2)
NOT TO SCALE



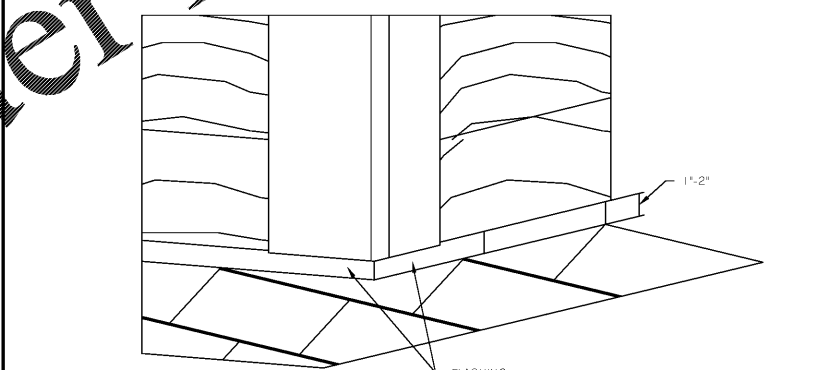
6.1 SOFFIT DETAIL 1
NOT TO SCALE

6.2 SOFFIT DETAIL 2
NOT TO SCALE

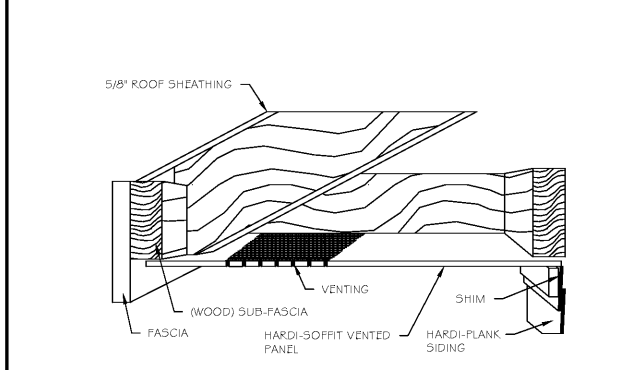


6 SOFFIT DETAIL (FIGURE 6)
NOT TO SCALE

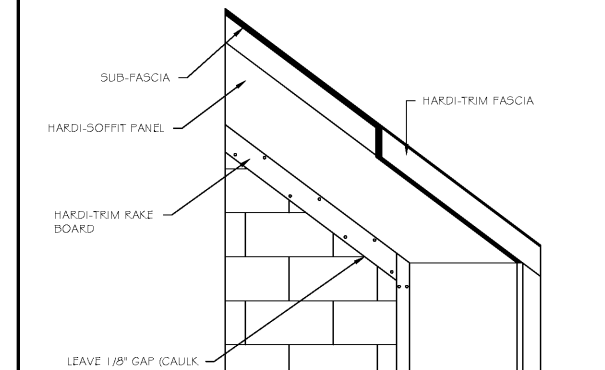
NOTES:
1. THESE DETAILS ARE SIMILAR ONLY. SEE SCALED DRAWINGS FOR FRAMING AND TRIM DETAILS.
2. THESE DETAILS ARE GENERAL HARDI-PLANK INSTALLATION DETAILS FOR REFERENCE ONLY. G.C. TO CONTACT MANUFACTURER DIRECTLY FOR PROJECT SPECIFIC DETAILS & SPECIFICATIONS.
3. SUBSTITUTIONS WITH PRODUCTS OF EQUAL QUALITY ARE PERMITTED.
4. ALL FINAL FINISH & COLOR SELECTIONS SHALL BE APPROVED BY OWNER PRIOR TO ORDERING OR FABRICATION.



3 ROOF CLEARANCE (FIGURE 3)
NOT TO SCALE



7 FASCIA DETAIL (FIGURE 7)
NOT TO SCALE



8 RAKE DETAIL (FIGURE 8)
NOT TO SCALE



JEFFERSON BROWNE GRESHAM ARCHITECTS
180 HULLSDEN ROAD, SUITE 1000
MARIETTA CITY, GEORGIA 30067
770-688-9345
JEFFERSONBROWNEARCHITECTS.COM

REVISIONS	
NO.	DESCRIPTION

RENEWED MEDICAL BUILDING
CORE & SHELL ONLY

SOUTH FULTON, GEORGIA
PROJECT #19-2983



PERMIT SET
RELEASE DATE

EXTERIOR DETAIL
HARDI-PLANK
SIDING

DRAWING TITLE
© COPYRIGHT 2020 JEFFERSON BROWNE GRESHAM ARCHITECTS, INC. THIS DOCUMENT AS AN INSTRUMENT OF SERVICE REMAINS THE PROPERTY OF JEFFERSON BROWNE GRESHAM ARCHITECTS AND NO PART THEREOF MAY BE REPRODUCED IN ANY FORM WITHOUT WRITTEN PERMISSION FROM JEFFERSON BROWNE GRESHAM ARCHITECTS.

Drawn By: JC
Checked By: RG, JB
PROJECT #: 19-2983
SHEET 16 OF 37

A-501