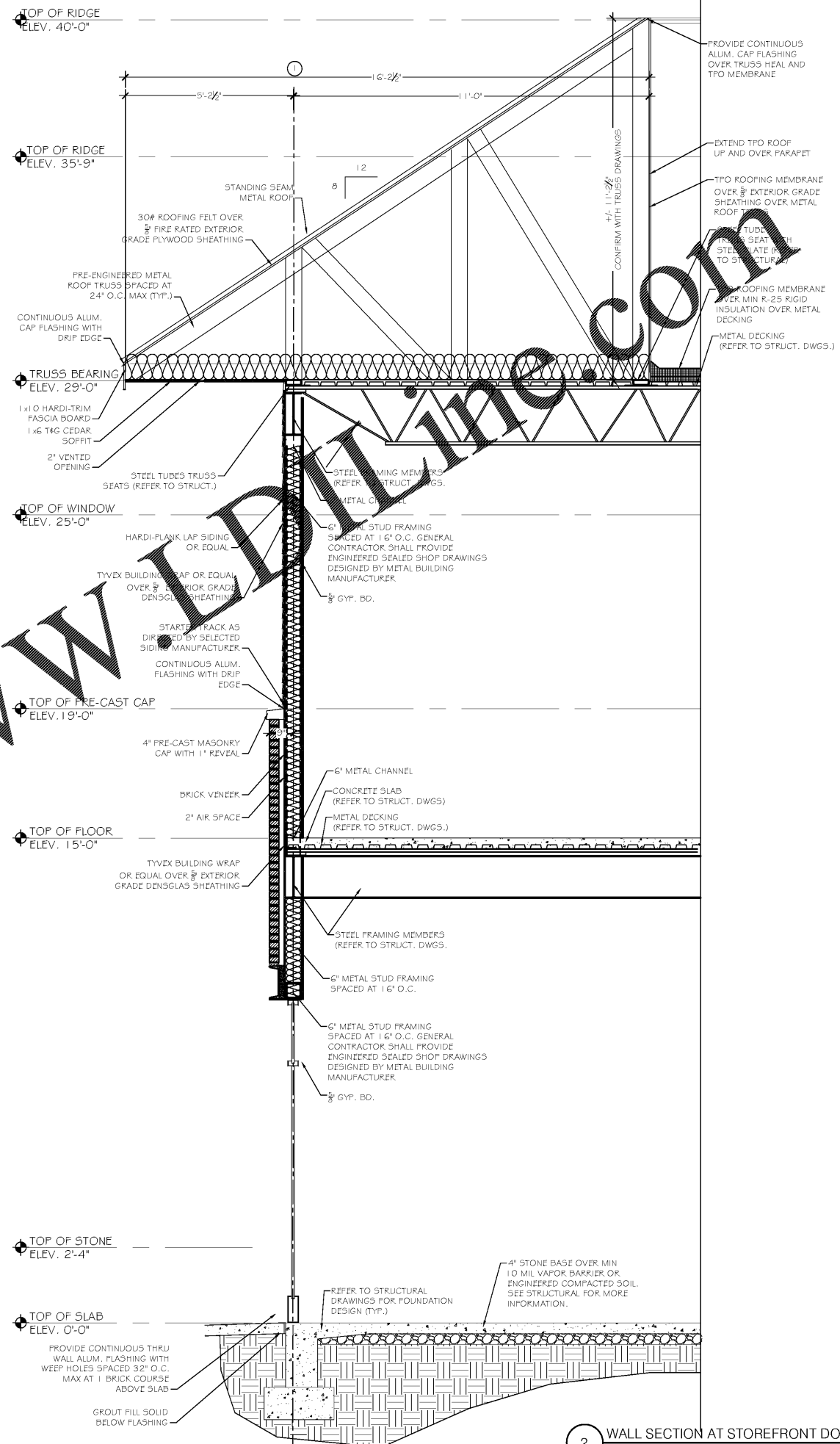


1 TYPICAL WALL SECTION AT WINDOWS
1/2" = 1'-0"



2 WALL SECTION AT STOREFRONT DOOR
1/2" = 1'-0"

Order Plans @ WWW.LDMLINE.COM

REVISIONS	
NO.	DESCRIPTION

RENEWED MEDICAL BUILDING
CORE & SHELL ONLY

SOUTH FULTON, GEORGIA
PROJECT #19-2983



SEAL
MARCH 27, 2020
PERMIT SET
RELEASE DATE

WALL SECTIONS

DRAWING TITLE
© COPYRIGHT 2020 JEFFERSON BROWNE GRESHAM ARCHITECTS, INC. THIS DOCUMENT AS AN INSTRUMENT OF SERVICE REMAINS THE PROPERTY OF JEFFERSON BROWNE GRESHAM ARCHITECTS AND NO PART THEREOF MAY BE REPRODUCED IN ANY FORM WITHOUT WRITTEN PERMISSION FROM JEFFERSON BROWNE GRESHAM ARCHITECTS.

Drawn By: J.C.
Checked By: R.G.J.B.
PROJECT # 19-2983
SHEET 01 of 37

A-404