

REVISIONS

NO.	DESCRIPTION

RENEWED MEDICAL BUILDING  
CORE & SHELL ONLY

SOUTH FULTON, GEORGIA  
PROJECT #19-2983



SEAL

MARCH 27, 2020

PERMIT SET

RELEASE DATE

WALL SECTIONS

DRAWING TITLE

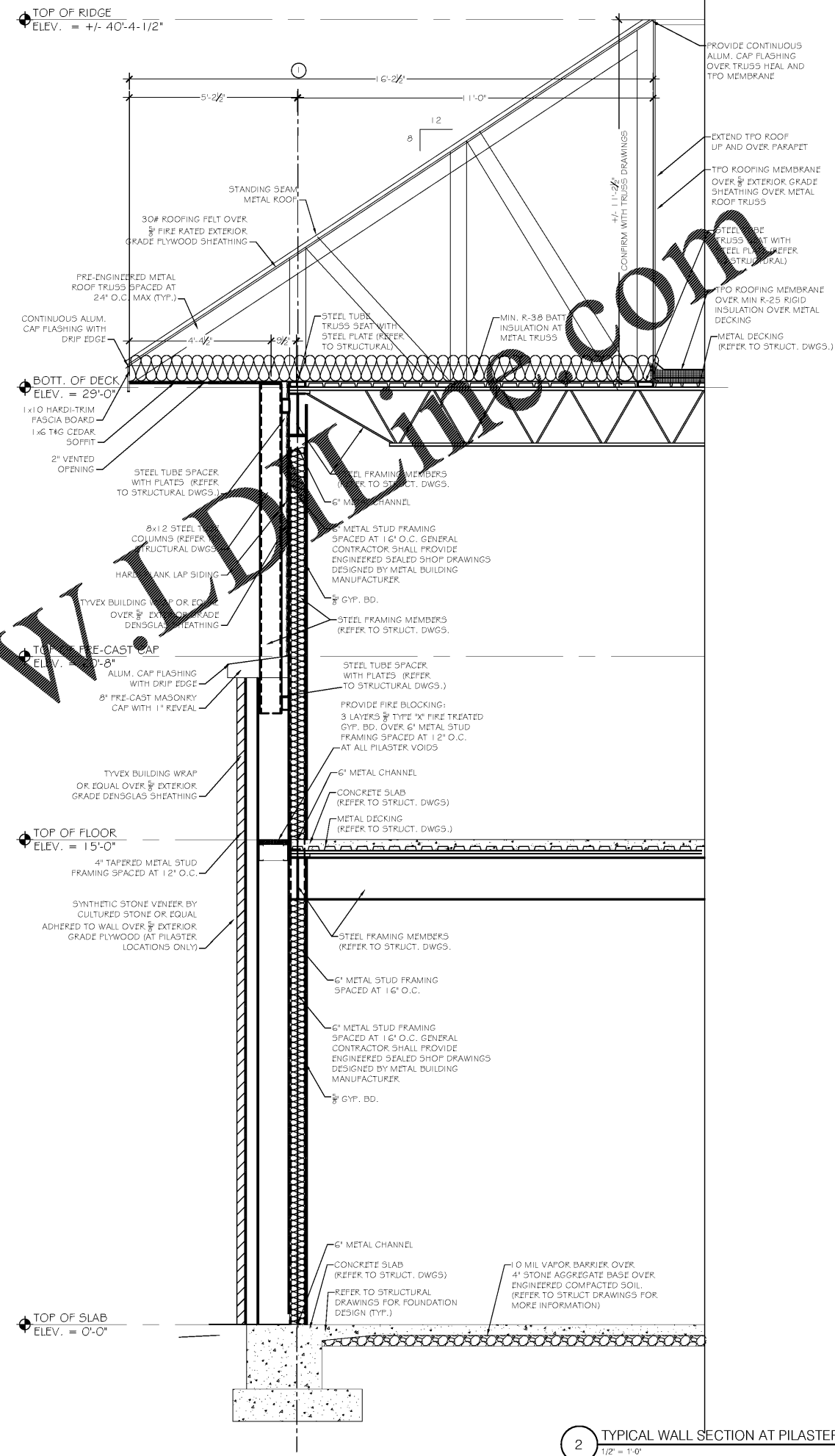
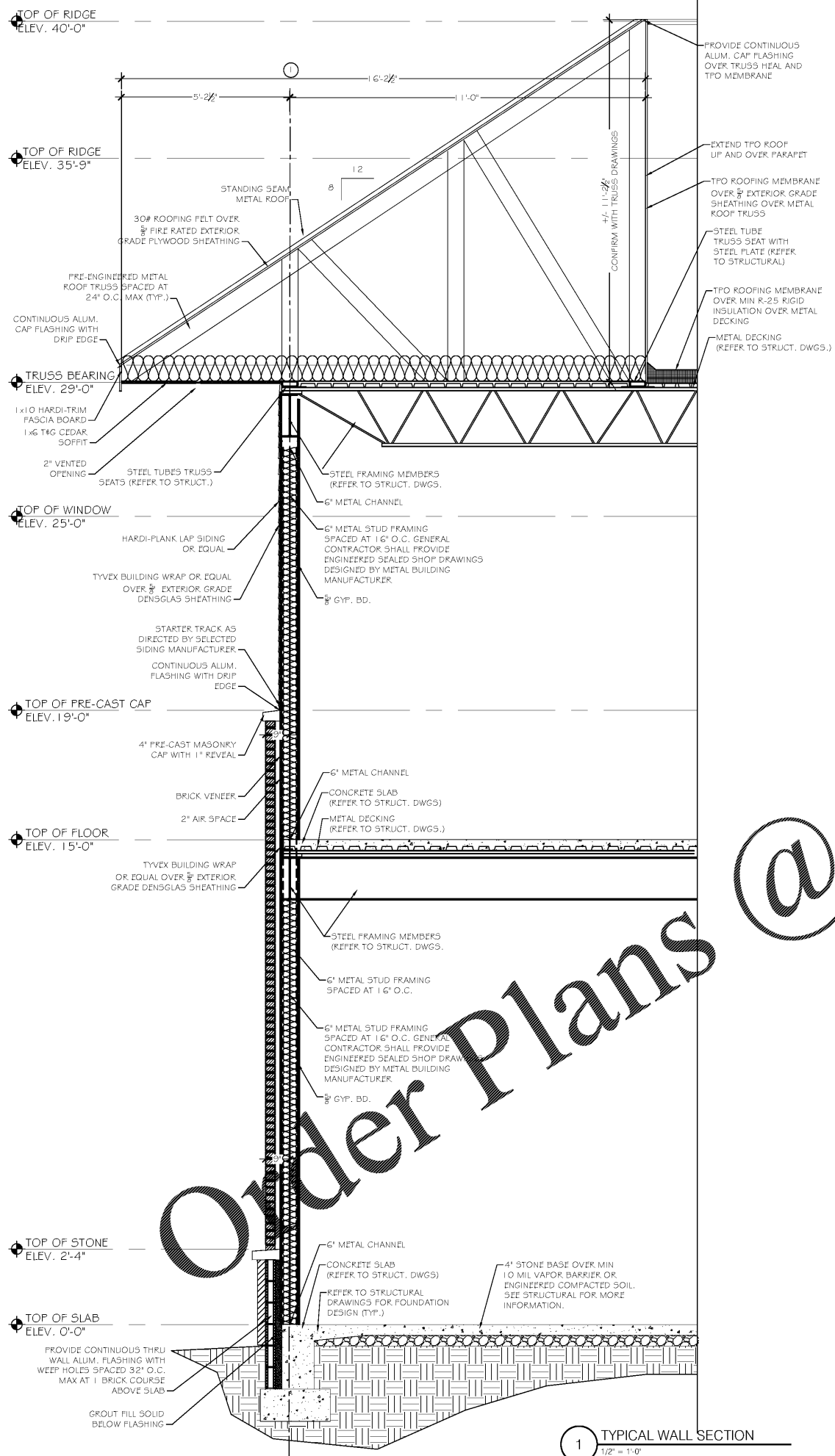
© COPYRIGHT 2020 JEFFERSON BROWNE GRESHAM ARCHITECTS, INC. THIS DOCUMENT IS AN INSTRUMENT OF SERVICE. IT REMAINS THE PROPERTY OF JEFFERSON BROWNE GRESHAM ARCHITECTS AND NO PART THEREOF MAY BE REPRODUCED IN ANY FORM WITHOUT WRITTEN PERMISSION FROM JEFFERSON BROWNE GRESHAM ARCHITECTS.

Drawn By: J.C.

Checked By: R.G.J.B.

PROJECT # 19-9883

SHEET 01 of 37



Order Plans @ [www.pdfline.com](http://www.pdfline.com)