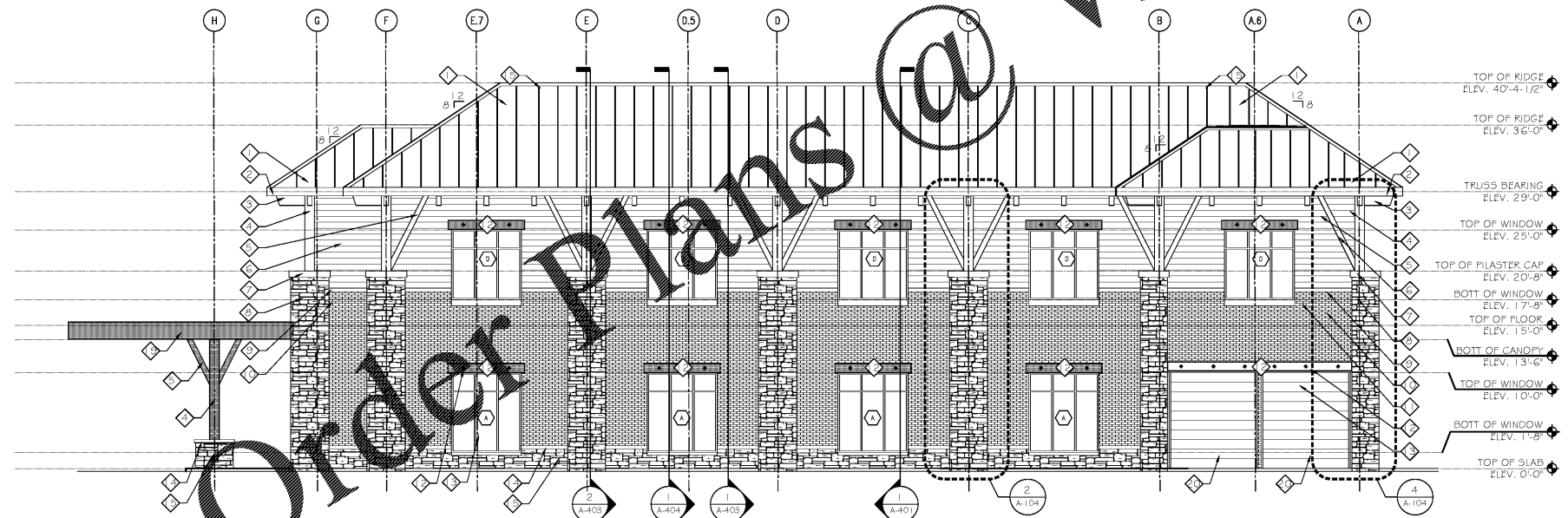


WEST EXTERIOR ELEVATION
1/8" = 1'-0"



NORTH EXTERIOR ELEVATION
1/8" = 1'-0"

EXTERIOR FINISH SCHEDULE			
1	STANDING SEAM METAL ROOF	3	ALUM. STOREFRONT WINDOW SYSTEM WITH LOW 'E' GLAZING IN 2" ANODIZED ALUM. FRAMING.
2	PRE-FINISHED ALUM. GUTTER	4	4" PRE-CAST STONE CAP COLOR TO MATCH ADJACENT STONE.
3	DECORATIVE GEDAR BRACKETS SPACED AT 5'-0" O.C. ATTACHED TO UNDERSIDE OF SOFFIT	5	SYNTHETIC STONE VENEER WAINSCOT BY CULTURED STONE OR EQUAL.
4	12"x12" STEEL TUBE - PAINTED	6	HOLLOW METAL DOOR WITH 2" HOLLOW METAL FRAMING.
5	6x6 STEEL TUBES	7	STOREFRONT DOOR SYSTEM WITH WAINSCOT GLAZING IN 2" ANODIZED ALUM. FRAMING. COLOR TO BE DARK BRONZE.
6	CEMENTITIOUS LAP SIDING BY JAMES HARDI OR EQUAL	8	CONTINUOUS ALUM. CAP FLASHING WITH Drip Edge AT TOP OF MANSARD ROOF
7	8" PRE-CAST STONE CAP COLOR TO MATCH ADJACENT STONE	9	CANOPY FRAMING WITH EXPOSED STEEL PAINTED TO MATCH STOREFRONTS AND INFILLED WITH 2x6 CEDAR PLANK SOFFIT
8	SYNTHETIC STONE VENEER DOOR IN METAL FRAMING TO OR EQUAL	10	INSULATED METAL OVERHEAD DOOR IN METAL FRAMING TO MATCH ALUM. STOREFRONTS
9	PRE-CAST MASONRY CAP COLOR TO MATCH ADJACENT BRICK VENEER	11	THRU-WALL EMER. OVERFLOW SCUPPERS LOCATED 6" (MAX) ABOVE TOP OF ROOF DRAINS. ALIGN WITH PRE-CAST CAP.
10	BRICK VENEER - COLOR SELECTIONS TO BE SUBMITTED TO ARCHITECT FOR APPROVAL	12	ROOF LINE BEYOND
11	8" PRE-CAST CAP WITH 1" REVEAL	13	EXTERIOR WALL SCORCE. SELECTION BY OWNER - SEE ELECTRICAL DRAWINGS OR MORE INFORMATION
12	12" STEEL CHANNEL WITH FAUX BOLTS WELDED TO FRONT FACE. SEE STRUCTURAL FOR MORE INFORMATION	14	

- GENERAL NOTES**
1. PROVIDE METAL CAP FLASHING AND DRIP EDGE ABOVE ALL WINDOWS AND DOORS.
 2. ALL FINISHES AND CORRESPONDING SPECIFICATIONS TO BE SUBMITTED FOR APPROVAL PRIOR TO FABRICATION OR INSTALLATION.
 3. CONTRACTOR TO INSTALL ALL MATERIALS AND FINISHES IN STRICT ACCORDANCE WITH SELECTED MANUFACTURER'S WRITTEN SPECIFICATIONS & RECOMMENDATIONS.
 4. INSTALL CONDENSATE LINES AT ROOF TOP UNITS IN THE DIRECTION OF ROOF SLOPES FOR POSITIVE DRAINAGE OF OFF ROOF TOWARDS ROOF DRAINS & SCUPPERS
 5. PROVIDE BRICK EXPANSION JOINTS AT 25'-0" O.C. MAX. SPACING ALONG ALL EXTERIOR BRICK FACADES. LOCATE EXPANSION JOINTS 10'-0" MAX. OFF BUILDING CORNERS (TYP). LOCATE EXPANSION JOINT AT WINDOWS WHEN POSSIBLE IF WITHIN MAX PREVIOUSLY STATED ABOVE.
 6. COORDINATE DOWNSPOUTS & SCUPPERS WITH CENTER OF PILASTERS WHEN APPLICABLE
 7. ALL STOREFRONT FRAMING SHALL BE 2" ANODIZED THERMALLY INSULATED ALUM. FRAMING WITH A DARK BRONZE FINISH. G.C. TO GET OWNER APPROVAL OF FINAL COLOR SELECTIONS PRIOR TO ORDERING, FABRICATION, OR INSTALLATION
 8. ALL NEW GLAZING SHALL BE MIN. 1" INSULATED LOW 'E' GLASS (SOLARBAN OR EQUAL WITH GRAY TINT). SEE WINDOW SCHEDULE SHEET FOR MORE INFORMATION
 9. PROVIDE CONTINUOUS FLASHING & WATERPROOF EXTERIOR SEALANT AT ALL MATERIAL TRANSITIONS.
 10. G.C. TO PROVIDE SAMPLES OF BRICK COLOR TO OWNER AND ARCHITECT FOR APPROVAL PRIOR TO ORDERING OR FABRICATION.
 11. REFER TO WINDOW & DOOR SCHEDULE WINDOW ADDITIONAL INFORMATION
 12. G.C. TO GET OWNER APPROVAL ON ALL EXTERIOR FINISH SELECTIONS PRIOR TO ORDERING, FABRICATION, OR INSTALLATION
 13. G.C. TO GET OWNER APPROVAL ON ALL EXTERIOR LIGHT FIXTURES PRIOR TO ORDERING, FABRICATION, OR INSTALLATION
 14. PROVIDE TAPERED INSULATION AT ALL ROOF EQUIPMENT CURBS/PENETRATIONS FOR POSITIVE DRAINAGE AROUND UNITS/CURBS TOWARDS ROOF DRAINS (MIN. 1/2" SLOPE)

EXTERIOR FINISHES LEGEND:

G.C. TO PROVIDE SAMPLES OF ALL EXTERIOR FINISH SELECTIONS TO ARCHITECT FOR REVIEW AND APPROVAL PRIOR TO ORDERING, FABRICATION, OR INSTALLATION

	4" BRICK VENEER PATTERN
	SYNTHETIC STONE VENEER BY CULTURED STONE OR EQUAL
	CEMENTITIOUS SIDING BY JAMES HARDI OR EQUAL
	4" PRECAST STONE CAP
	STEEL CHANNELS (SIZES VARY) WITH DECORATIVE SQUARE BOLTS (SPACING VARY)
	ALUM. STOREFRONT SYSTEM WITH 1" INSULATED LOW 'E' GLAZING WITH GRAY TINT IN 2" ANODIZED ALUM. FRAMING
	STANDING SEAM METAL ROOF



JEFFERSON BROWNE GRESHAM ARCHITECTS
130 HAZLETON ROAD, SUITE 1000
ROCKY HILL, GEORGIA 30299
770-638-9345
JEFFERSONBROWNEARCHITECTS.COM

REVISIONS

NO.	DESCRIPTION

RENEWED MEDICAL BUILDING
CORE & SHELL ONLY

SOUTH FULTON, GEORGIA
PROJECT #19-2983



SEAL
MARCH 27, 2020
PERMIT SET
RELEASE DATE

EXTERIOR ELEVATIONS

DRAWING TITLE
© COPYRIGHT 2020 JEFFERSON BROWNE GRESHAM ARCHITECTS, INC. THIS DOCUMENT AS AN INSTRUMENT OF SERVICE REMAINS THE PROPERTY OF JEFFERSON BROWNE GRESHAM ARCHITECTS AND NO PART THEREOF MAY BE REPRODUCED IN ANY FORM WITHOUT WRITTEN PERMISSION FROM JEFFERSON BROWNE GRESHAM ARCHITECTS.
Drawn By: JC
Checked By: JC
PROJECT # 19-2983
SHEET 06 OF 37

A-302