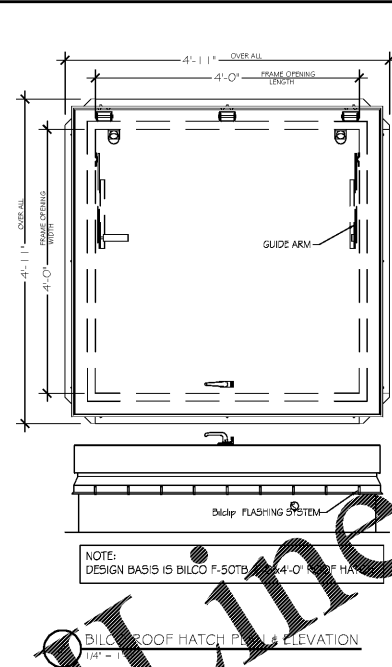
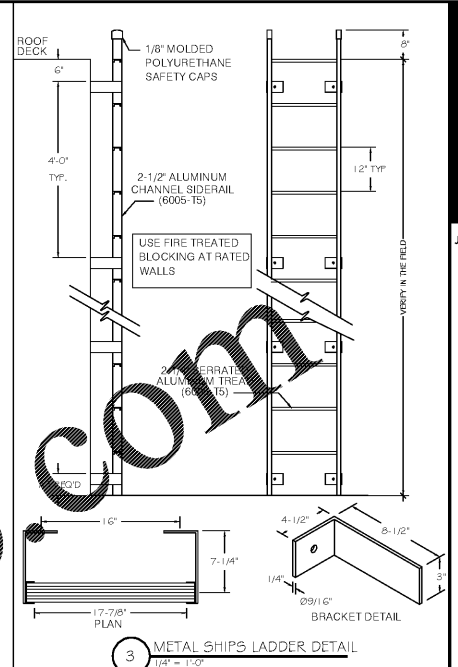


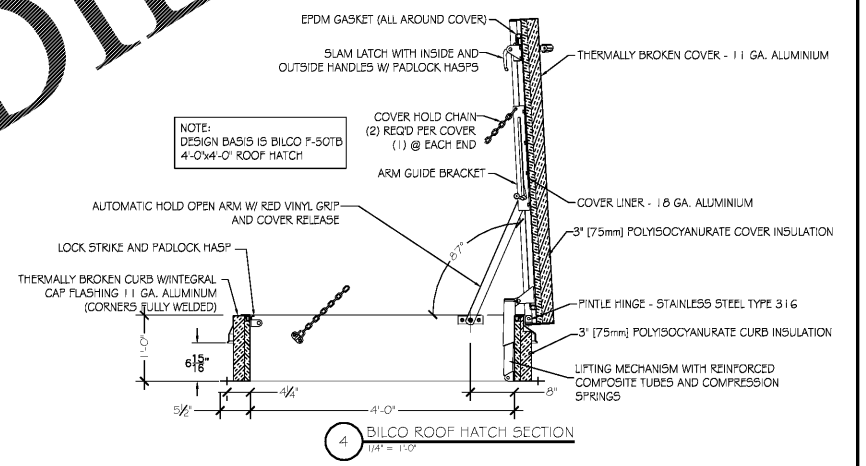
1 ROOF PLAN
1/8" = 1'-0"



BILCO ROOF HATCH PLAN & ELEVATION
1/4" = 1'-0"



3 METAL SHIP'S LADDER DETAIL
1/8" = 1'-0"



4 BILCO ROOF HATCH SECTION
1/4" = 1'-0"

GENERAL NOTES

1. PROVIDE METAL CAP FLASHING AND DRIP ABOVE DOORS & WINDOWS
2. ALL FINISHES AND CORRESPONDING SPECIFICATIONS TO BE SUBMITTED TO OWNER FOR OWNER APPROVAL PRIOR TO FABRICATION OR INSTALLATION.
3. CONTRACTOR TO INSTALL ALL MATERIALS AND FINISHES IN STRICT ACCORDANCE WITH SELECTED MANUFACTURER'S WRITTEN SPECIFICATIONS & RECOMMENDATIONS.
4. INSTALL CONDENSATE LINES AT ROOF TOP UNITS TO DRAIN IN THE DIRECTION OF ROOF SLOPE FOR POSITIVE DRAINAGE OFF ROOF TOWARDS REAR (EAST) OF BUILDING
5. PROVIDE BRICK EXPANSION JOINTS AT 25'-0" O.C. MAX. SPACING ALONG ALL EXTERIOR BRICK FACADES. LOCATE EXPANSION JOINTS 1'-0" MAX. OFF BUILDING CORNERS (TYP). LOCATE EXPANSION JOINT AT WINDOWS WHEN POSSIBLE IF WITHIN MAX PREVIOUSLY STATED ABOVE.
6. PROVIDE TAPERED INSULATION AT ALL ROOF EQUIPMENT CURBS/PENETRATIONS FOR POSITIVE WATER DRAINAGE AROUND UNITS/CURBS TOWARDS ROOF DRAINS (MIN. 1/2 SLOPE).
7. PROVIDE TAPERED INSULATION AT ALL MECHANICAL SCREENING POSTS TO DIRECT WATER TOWARDS SCUPPERS (MIN. 1/2 SLOPE)
8. REFER TO MECHANICAL DRAWINGS FOR ROOF TOP UNIT LOCATIONS AND COORDINATE ALL EQUIP LOCATIONS WITH REQUIRED STRUCTURAL FRAMING & BRACING.
9. LOCATE EMERGENCY OVERFLOW SCUPPERS AS INDICATED ON EXTERIOR ELEVATIONS. INSTALL IN STRICT ACCORDANCE WITH MANUFACTURER'S SPECIFICATIONS. PROVIDE FLASHING AND SEALANT AS REQUIRED TO ESTABLISH A WATERTIGHT CONDITION THROUGHOUT
10. REFER TO STRUCTURAL DRAWINGS FOR STEEL POST FRAMING LOCATIONS AND SPACING AT ALL PARAPET WALLS
11. FLASH AND SEAL ALL ROOF PENETRATIONS AS REQUIRED AND CONFIRM A WATER TIGHT SEAL IS PRESENT THROUGHOUT. COORDINATE WITH ROOF CONTRACTOR ALL WARRANTY PROTECTION REQUIREMENTS

Order Plans @ WWW.LDILine.com



JEFFERSON BROWNE GRESHAM ARCHITECTS
130 HUNTERTON ROAD, SUITE 1000
ROACHES CITY, GEORGIA 30259
770-636-9345
JEFFERSONBROWNEARCHITECTS.COM

REVISIONS

NO.	DESCRIPTION

RENEWED MEDICAL BUILDING
CORE & SHELL ONLY

SOUTH FULTON, GEORGIA
PROJECT #19-2983



PERMIT SET
RELEASE DATE

ROOF PLAN

DRAWING TITLE
© COPYRIGHT 2020 JEFFERSON BROWNE GRESHAM ARCHITECTS, INC. THIS DOCUMENT AS AN INSTRUMENT OF SERVICE REMAINS THE PROPERTY OF JEFFERSON BROWNE GRESHAM ARCHITECTS AND NO PART THEREOF MAY BE REPRODUCED IN ANY FORM WITHOUT WRITTEN PERMISSION FROM JEFFERSON BROWNE GRESHAM ARCHITECTS.

Drawn By: JC
Checked By: RG, JB
PROJECT # 19-9883
SHEET 06 OF 37

A-107