



REVISIONS	DESCRIPTION	DATE

TREE PLAN
 RENEWED MEDICAL
 OLD NATIONAL HIGHWAY
 SOUTH FULTON, GA

PROJECT NO: 21802-4
 LAND LOT(S): 132, 133
 DISTRICT: 13TH
 COUNTY: FULTON
 SCALE: AS SHOWN
 DATE: 01/26/2020

DRAWING NO: **C-11.1**

QTY	BOTANICAL NAME	COMMON NAME	SIZE	SPACING	HEIGHT	UNITS	TOTAL UNITS	AREA	TOTAL	REMARKS	
Plant Schedule											
Specimen Recompense Tree (NOT counted for density)											
1	<i>Ulmus americana</i> 'Princeton'	Princeton Elm	4" Cal.	Per Plan	14'-16'					1, 3, 6, 9, 10, 11	
Parking Lot Trees (counted for density)											
8	<i>Pistacia chinensis</i>	Chinese Pistache	4" Cal.	Per Plan	14'-16'	1.0	8.0			1, 3, 6, 9, 10, 11	
16	<i>Quercus nuttallii</i>	Nuttall Oak	4" Cal.	Per Plan	14'-16'	1.0	16.0			1, 3, 4, 5, 6, 9, 10, 11	
8	<i>Ulmus americana</i> 'Princeton'	Princeton Elm	4" Cal.	Per Plan	14'-16'	1.0	8.0			1, 3, 6, 9, 10, 11	
Buffer Trees (counted for density)											
8	<i>Cryptomeria japonica</i> 'Yoshino'	Yoshino Cryptomeria	4" Cal.	14" O.C.	9'-10'	0.7	5.6			1, 4, 6, 7, 9, 10, 11	
18	<i>Ilex opaca</i>	American Holly	4" Cal.	14" O.C.	9'-10'	0.7	11.2			1, 4, 6, 7, 9, 10, 11	
14	<i>Magnolia grandiflora</i> 'Bracken's Brown Beauty'	Brackens Brown Beauty Magnolia	4" Cal.	14" O.C.	9'-10'	1.0	14.0			1, 4, 6, 7, 9, 10, 11	
Additional Trees (counted for density)											
3	<i>Magnolia grandiflora</i> 'Bracken's Brown Beauty'	Brackens Brown Beauty Magnolia	4" Cal.	Per Plan	9'-10'	1.0				1, 4, 6, 7, 9, 10, 11	
5	<i>Ulmus americana</i> 'Princeton'	Princeton Elm	4" Cal.	Per Plan	14'-16'					1, 3, 6, 9, 10, 11	
Landscape Strip Trees (counted for density)											
3	<i>Lagerstroemia indica</i> 'Sloue'	Sloue Crape Myrtle	1" Cal.	25' O.C.	5'-7'	0.4	1.2	100	300	2, 5, 6, 9, 10, 11	
6	<i>Magnolia x soulangeana</i> 'Jane'	Jane Magnolia	1" Cal.	8' O.C.	6'-7'		2.4	100	600	2, 5, 6, 9, 10, 12	
5	<i>Nyssa sylvatica</i> 'Wildfire'	Wildfire Blackgum	4" Cal.	Per Plan	14'-16'	1.0	5.0	100	500	1, 3, 5, 6, 9, 10, 11	
5	<i>Vitex agnus-castus</i> 'Shoal Creek'	Shoal Creek Vitex	1" Cal.	25' O.C.		0.4	2.0	100	500	2, 5, 6, 8, 10, 11	
Landscape Strip Shrubs											
39	<i>Distylium</i> 'Vintage Jade'	Vintage Jade Distylium	1" Cal.	4" O.C.					16	624	6, 7, 10, 12
64	<i>Ilex cornuta</i> 'Carissa'	Carissa Holly	3" Cal.	4" O.C.					18	1,024	6, 7, 10, 12
118	<i>Ilex vomitoria</i> 'Nana'	Dwarf Yaupon Holly	3" Cal.	4" O.C.					19	1,898	6, 7, 10, 12
28	<i>Loropetalum chinensis</i> var. <i>rubrum</i> 'Ruby'	Ruby Loropetalum	3" Cal.	4" O.C.					16	448	6, 7, 10, 12
24	<i>Pennisetum alopecuroides</i>	Fountain Grass	3" Cal.	3" O.C.					16	384	6, 7, 10, 12
75	<i>Rhododendron</i> 'Fobiel' Autumn Debutant Encore	Autumn Debutant Encore Azalea	3" Cal.	4" O.C.					16	1,200	6, 7, 10, 12
22	<i>Rosa</i> 'Meigalpio'	Drift Rose	3" Cal.	3" O.C.					9	198	6, 7, 10, 12
							TOTAL UNITS	81.4	TOTAL AREA	7,666	

Notes:
 1. Tree selections and density shown are from Table 2.0 and Appendix E, Section III of the Code of Ordinances.
 2. Buffer tree selections are from Appendix E, Section III of the Code of Ordinances. All buffer material must be minimum 5 feet tall once installed and have branching all the way to the ground.
 3. Parking lot trees must be a minimum 4" caliper. Selections shown are from Appendix K, Section III of the Code of Ordinances.
 4. At least 70% of the required trees are hardwoods, of at least four species, according to Appendix E, Section III.C.1.b.

*SEE TREE PLAN NOTE #1.

REMARKS
1. Single Trunk
2. Multi-Trunk, 3-5 canes, 1" min./cane
3. Straight Trunk
4. Central Leader
5. Natural Branching
6. Full Canopy / Head
7. Full to Ground
8. Tree Form
9. Specimen
10. Matched Set
11. Balled and Burlapped (B&B)
12. Container

TREE CALCULATIONS:

TREE #	DBH	SPECIES	Existing Units to
T1	9	HWD	2
T2	7	HWD	1.2
T3	11	HWD	2.8
T4	10	HWD	2.4
T5	9	HWD	2
T6	20	HWD	4
T7	21	PINE	4.8
T8	10	HWD	2.4
T9	26	HWD	11.1
T10	23	PINE	8.7
*T11	33	HWD	
TOTAL			41.4

*Tree #T11 to be removed, see Recompense Calculation.

Density Calculation	
Density Factor for the Site	= 30 Units per Acre
Total Site Area	= 4.90 Acres
Required Units	= 147.0 Units
Existing Density Factor	= 41.4 Units
Replacement Density Factor	= 81.4 Units
Total Units on Property	= 122.8 Units
Deficient Units	= 24.2 Units
*REQUIREMENT NOT MET	

Note:
 Requirements shown are from Chapter 6, Sec. 14-6003 of the Code of Ordinances.

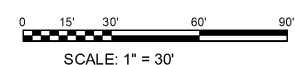
***TREE PLAN DENSITY NOTE:**
 THIS TREE PLAN DOES NOT MEET THE REQUIRED DENSITY FACTOR FOR THE SITE. OWNER SHALL COORDINATE WITH CITY ARBORIST REGARDING TREE BANK OR TREE REPLACEMENT FUND INFORMATION.

Recompense Calculation	
Number of Specimen Trees Removed	= 1
Number of 4" Trees Required	= 1
Number of 4" Trees Shown on Plans	= 1
REQUIREMENT MET	

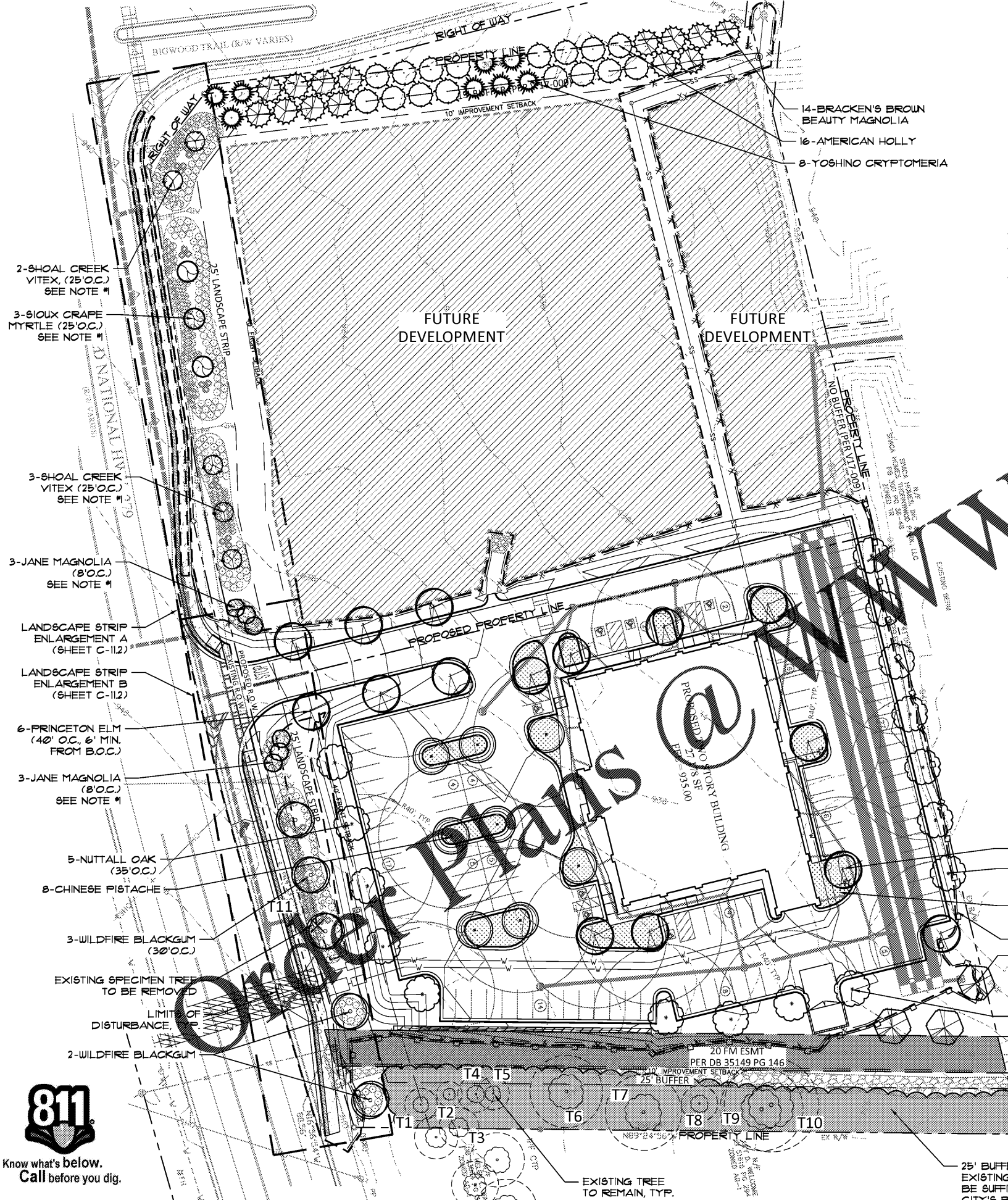
Note:
 Requirements shown are from Appendix E, Section III.C.2 of the Code of Ordinances.

25' Landscape Strip Calculations:	
REQUIRED 1 Tree per 30 LF of Landscape Strip	
Total Road Frontage Length:	594
Less Length Within Access Easement and Drive:	33
Net Road Frontage Length:	561
Total Trees Required:	19
Planted Trees:	19
Requirement Met	
REQUIRED 60% Coverage in Trees and Shrubs	
Total Landscape Strip Area:	14,950
Less Area Within Sidewalk and Driveway:	1,491
Less Area Within Access Easement and Drive:	993
Net Landscape Strip Area:	12,766
60% Coverage Required:	7,660
Total Coverage Area on Plans:	7,666
REQUIREMENT MET	

Note:
 Requirements shown are from Appendix E, Section III.D.1 of the Code of Ordinances.



- TREE PLAN NOTES:**
- UNDERSTORY TREES ARE PROPOSED IN THE NORTH HALF OF THE 25' LANDSCAPE STRIP DUE TO OVERHEAD POWER LINES.
 - ALL TREES WITHIN THE LIMITS OF DISTURBANCE TO BE REMOVED.
 - ALL DISTURBED AREAS TO BE COVERED WITH PERMANENT VEGETATION PER EROSION CONTROL PLANS, UNLESS OTHERWISE NOTED.
 - ALL NEWLY PLANTED TREES SHALL HAVE A SIX-FOOT DIAMETER PINE STRAW MULCH RING, UNLESS OTHERWISE NOTED.
 - SEE SHEETS C-11.2 THROUGH C-11.4 FOR ADDITIONAL INFORMATION.



2-SHOAL CREEK VITEX (25'O.C.) SEE NOTE #1
 3-SIOUX CRAPE MYRTLE (25'O.C.) SEE NOTE #1

3-SHOAL CREEK VITEX (25'O.C.) SEE NOTE #1

3-JANE MAGNOLIA (8'O.C.) SEE NOTE #1

LANDSCAPE STRIP ENLARGEMENT A (SHEET C-11.2)

LANDSCAPE STRIP ENLARGEMENT B (SHEET C-11.2)

6-PRINCETON ELM (40' O.C., 6' MIN. FROM B.O.C.)

3-JANE MAGNOLIA (8'O.C.) SEE NOTE #1

5-NUTTALL OAK (35'O.C.)

8-CHINESE PISTACHE

3-WILDFIRE BLACKGUM (30'O.C.)

EXISTING SPECIMEN TREE TO BE REMOVED

LIMIT OF DISTURBANCE

2-WILDFIRE BLACKGUM

14-BRACKEN'S BROWN BEAUTY MAGNOLIA

16-AMERICAN HOLLY

8-YOSHINO CRYPTOMERIA

8-PRINCETON ELM

1-NUTTALL OAK (30'O.C.)

ALL INTERNAL TREE ISLANDS TO HAVE 3" HARDWOOD MULCH

TREE PROTECTION FENCE, TYP.

3-SOUTHERN MAGNOLIA

4-NUTTALL OAK

25' BUFFER TO REMAIN UNDISTURBED. EXISTING VEGETATION APPEARS TO BE SUFFICIENT TO MEET CITY'S BUFFER REQUIREMENTS

EXISTING TREE TO REMAIN, TYP.

