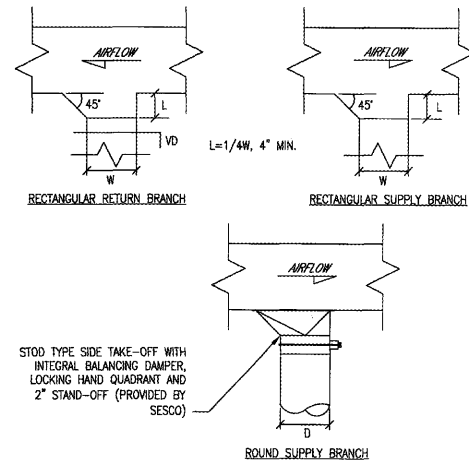
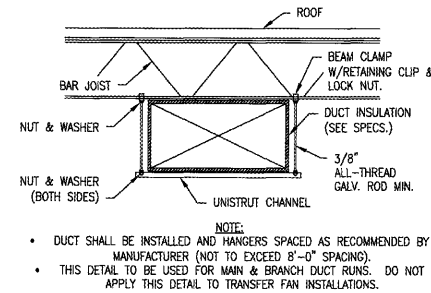


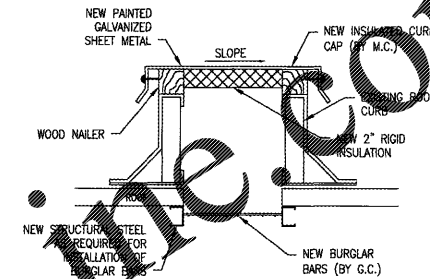
1 SUPPLY DIFFUSER INSTALLATION DETAIL
M5.01 SCALE: NOT TO SCALE



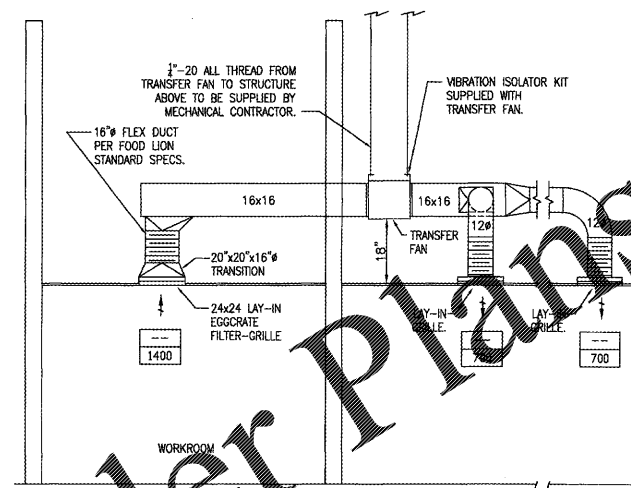
2 TYPICAL DUCT BRANCH TAKEOFF
M5.01 SCALE: NOT TO SCALE



3 RECTANGULAR DUCT HANGER DETAIL
M5.01 SCALE: NOT TO SCALE

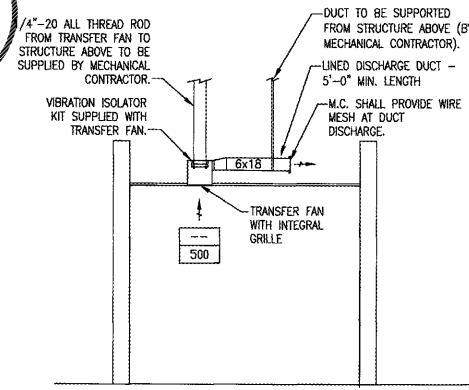


4 WEATHERPROOF INSULATED CURB CAP DETAIL
M5.01 SCALE: NOT TO SCALE



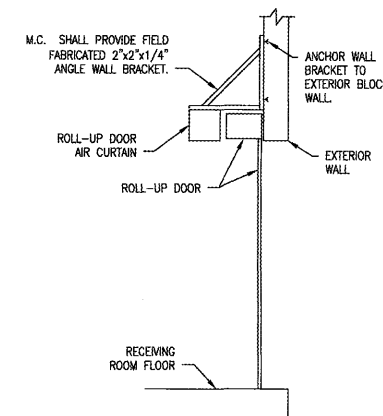
NOTE:
1. TRANSFER FAN TO BE WIRING TO WORKROOM LIGHTING CIRCUIT. ENSURE THAT THE WORKROOM LIGHTING CIRCUIT IS ON THE LOAD. IF THE CIRCUIT IS NOT ON LOAD 1, E.C. IS TO ADD IT AND A CONTACTOR (IF NEEDED) TO LOAD 1.
2. TRANSFER FAN SHALL BE MOUNTED OUTSIDE OF THE WORKROOM OFFICE PERIMETER.
3. SUPPLY DIFFUSER SHALL BE A MINIMUM OF 10'-0" AWAY FROM DOOR.
4. BOTTOM OF TRANSFER FAN TO BE MOUNTED A MAXIMUM OF 18" ABOVE CEILING GRID FOR SERVICE ACCESS.
5. SUPPLY & RETURN DUCT TO BE INTERNALLY LINED WITH 1/2" THK. ARMACELL AP ARMAFLEX OR EQUAL.

5 WORKROOM TRANSFER FAN INSTALLATION DETAIL
M5.01 SCALE: NOT TO SCALE



NOTES:
1. SUPPORT AREA TRANSFER FAN SHALL BE CONTROLLED BY A WALL MOUNTED INLINE VOLTAGE THERMOSTAT SET AT 72°F.
2. DISCHARGE DUCT TO BE INTERNALLY LINED WITH 1/2" THK. ARMACELL AP ARMAFLEX OR EQUAL.

6 P.C. TRAINING/MGR. OFFICE TRANSFER FAN INSTALLATION DETAIL
M5.01 SCALE: NOT TO SCALE



NOTES:
1. M.C. SHALL USE FIELD FABRICATED ANGLE SUPPORT BRACKETS.
2. DSD AIR CURTAIN SHALL BE HUNG ON INTERIOR OF BUILDING FROM EXTERIOR WALL ABOVE DSD DOOR.

7 ROLL UP DOOR AIR CURTAIN INSTALLATION DETAIL
M5.01 SCALE: NOT TO SCALE

Order Plans

@

WWW.LDILINE.COM