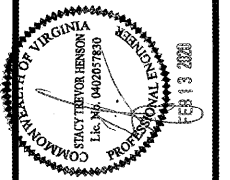
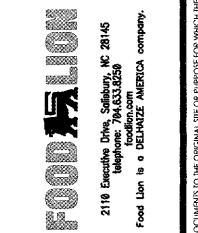


ARCHITECT'S SEAL:

ENGINEER'S SEAL:



REVISIONS  
NO DATE REMARKS



FOOD LION  
REMODEL  
STORE #1208  
13490 DUMFRIES RD  
MANASSAS, VA 20112

PROJECT NO: 2019.0917  
DATE: 2-13-20

28 OF 47  
P1.03  
WATER PIPING PLAN

CHECKED: PD DRAWN: AE

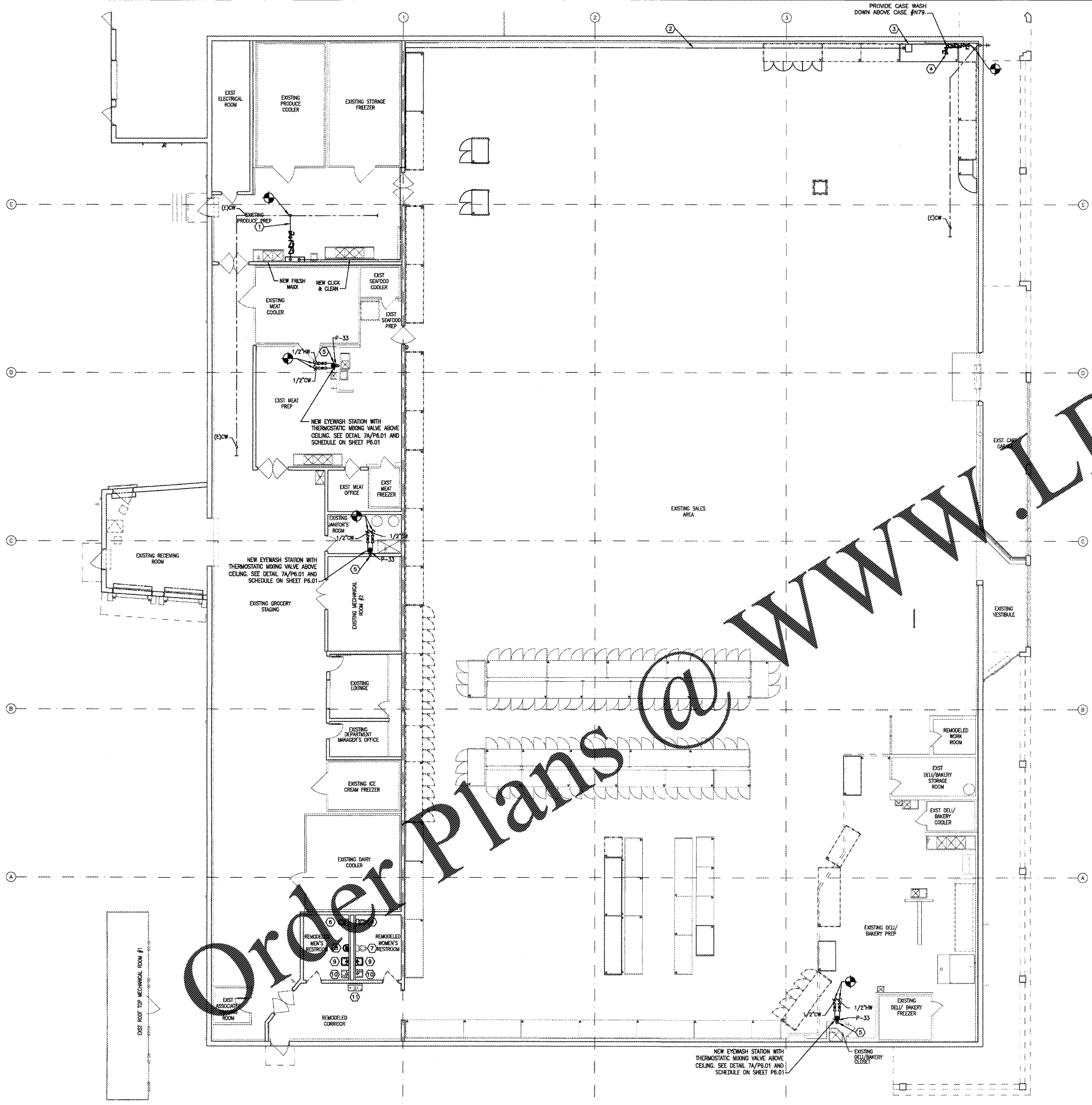
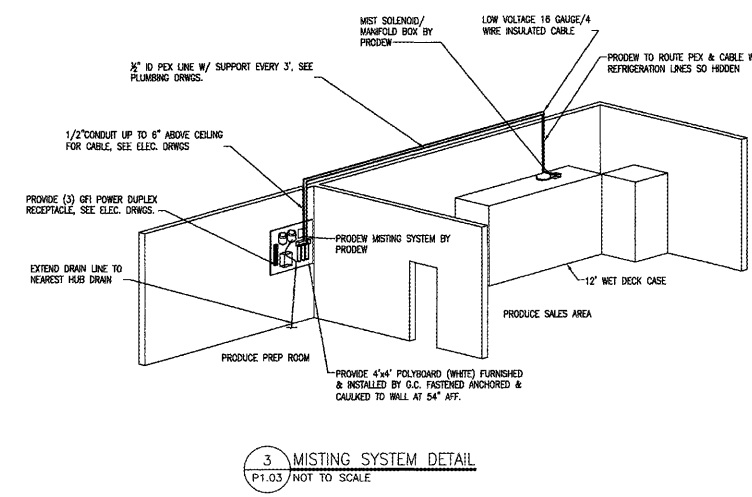
**PLUMBING LEGEND**

- BALL VALVE
- CHECK VALVE (TYPICAL AT ALL MIXING FAUCETS)
- HOSE BIBB
- EXISTING LINE CAPPED OFF
- CONNECT TO EXISTING
- CUT TO THIS LOCATION
- AFF - ABOVE FINISH FLOOR
- BRN - BRANCH TO CONNECT
- (E) - EXISTING
- NEW OVERHEAD COLD WATER
- NEW OVERHEAD HOT WATER
- NEW BELOW SLAB COLD WATER
- NEW BELOW SLAB HOT WATER
- PH - FIRE-HAZARD LINE
- HOT WATER RETURN
- WATER SLAB WATER LINES
- EXISTING PLUMBING LINE TO BE REMOVED

- GENERAL NOTES**
1. ALL SUPPLY WATER PIPING TO BE 1/2" O.D. COPPER 1.1" W/ WROUGHT COPPER FITTINGS INSULATED W/ 1/2" FIBERGLASS OR 3/8" ARMAFLEX SUSPENDED FROM HW JOISTS.
  2. IT IS THE RESPONSIBILITY OF THE PLUMBING CONTRACTOR TO COMPLY WITH STATE AND LOCAL PLUMBING CODES AND VERIFY THE ACCEPTABILITY OF NON-SPECIFIED SINKS, DRAINS AND RELATED ITEMS. REQUIREMENT ITEMS INCLUDING, BUT NOT LIMITED TO, GREASE INTERCEPTORS, BACKFLOW PREVENTORS AND SINKS.
  3. FOOD LION WILL NOT ACCEPT PLASTIC COVERS FOR CLEANOUTS. COVERS SHALL BE MADE OF CAST IRON OR BRASS.
  4. PLUMBING CONTRACTOR SHALL PROVIDE AND INSTALL CHECK VALVES ON THE COLD WATER SIDE OF ALL NEW AND EXISTING MIXING HOSE BIBBS, MIXING SYSTEMS, EYEWASH STATIONS AND FAUCETS. ALL PREP DEPARTMENTS (MEAT, PRODUCE, DELI/BAKERY) SHALL ALSO HAVE SHUT OFF VALVES ON BOTH COLD AND HOT WATER LINES.
  5. SINKS IN MEAT PREP, PRODUCE PREP AND DELI PREP SHALL BE ORDERED AND INSTALLED WITH A 3" STANDOFF (EXCEPT HAND SINKS).
  6. INSTALL AN EXPANSION TANK ON THE INLET SIDE OF ALL WATER HEATERS THAT HAVE THE BACKFLOW PREVENTER CHECK VALVES INSTALLED.
  7. SEAL ALL PENETRATIONS IN JANITOR'S AREA WITH CAULK. (BEHIND ESCUTCHEONS)
  8. THE EXISTING CONDITIONS INDICATED ON THIS SHEET ARE INTENDED TO CONVEY THE APPROXIMATE CONDITIONS OF THE BUILDING. ALL DATA SHALL BE VERIFIED BY THE CONTRACTOR PRIOR TO THE SUBMISSION OF BIDS AND/OR THE COMMENCEMENT OF WORK. ANY CONDITIONS WHICH DIFFER SUBSTANTIALLY FROM THAT INDICATED ON THE EXISTING CONDITIONS PLAN OR THE CONSTRUCTION DOCUMENTS, SHALL BE IMMEDIATELY BROUGHT TO THE ATTENTION OF THE ENGINEER AND FOOD LION CONSTRUCTION SUPERVISOR.

- DOMESTIC WATER KEY NOTES**
1. EXTEND 1/2" CW SOFT COPPER SUPPLY TO NEW MISTING SYSTEM. PROVIDE 1/2" FPT BALL VALVE AND DOUBLE CHECK VALVE AT CONNECTION OF EXISTING CW SUPPLY. MOUNT TO WALL. COORDINATE EXACT LOCATION WITH CONSTRUCTION SUPERVISOR. DOUBLE CHECK VALVE ASSEMBLY SHALL BE EQUAL TO A WATTS SERIES 007.
  2. EXTEND 1/2" PEX SUPPLY ABOVE CEILING. PROVIDE SUPPORTS EVERY 24".
  3. EXTEND 1/2" PEX SUPPLY TO NEW MISTING SYSTEM SOLID/HD/AMNIFOLD BOX ON TOP OF CASE #N79. SEE NOTE #4 ON P1.01. SEE MISTING SYSTEM ISOMETRIC ON THIS SHEET.
  4. EXTEND 1/2" CW SUPPLY CONCEALED IN WALL DOWN TO 4" ABOVE CASE FOR CASE WASH-DOWN. PROVIDE 1/2" FPT BALL VALVE AND DOUBLE CHECK VALVE AT CONNECTION OF EXISTING CW SUPPLY. TERMINATE WITH 1/2" FPT BALL VALVE AND DOUBLE CHECK VALVE ASSEMBLY. COORDINATE EXACT LOCATION WITH CONSTRUCTION SUPERVISOR. DOUBLE CHECK VALVE ASSEMBLY SHALL BE EQUAL TO A WATTS SERIES 007. ALL PIPING AND ACCESSORIES SHALL BE CONCEALED FROM SALES FLOOR.
  5. INSTALLED NEW EYEWASH (P-33) AS INDICATED SHEET P1.01. EXTEND 1/2" HW/CW TO NEAREST WATER PIPING. SEE DETAIL #7 ON SHEET P6.01.
  6. RELOCATED EXISTING ADA WATER CLOSET AS INDICATED ON SHEET P1.01. ADJUST EXISTING WATER PIPING AS REQUIRED FOR RECONNECTION. PREPARE WALL AND FLOOR TO RECEIVE NEW FINISHES.
  7. REINSTALLED EXISTING WATER CLOSET AFTER FINISH INSTALLATION. RECONNECT EXISTING WATER PIPING.
  8. RELOCATED EXISTING URINAL AS INDICATED ON SHEET P1.01. ADJUST EXISTING WATER PIPING AS REQUIRED FOR RECONNECTION. PREPARE WALL TO RECEIVE NEW FINISHES.
  9. RELOCATED EXISTING LAVATORY AS INDICATED ON SHEET P1.01. ADJUST EXISTING WATER PIPING AS REQUIRED FOR RECONNECTION. PREPARE WALL TO RECEIVE NEW FINISHES.
  10. REINSTALL EXISTING LAVATORY AFTER FINISH INSTALLATION. RECONNECT EXISTING HW/CW PIPING.
  11. REINSTALL EXISTING DRINKING FOUNTAIN AFTER FINISH INSTALLATION. RECONNECT EXISTING CW PIPING.

- NOTES:**
- PROVIDE AND INSTALL ALL EQUIPMENT, CONNECTIONS, & PIPE FITTINGS.
  - PROVIDE TO PULL CABLE & 1/2" PEX WATER LINE.
  - G.C. TO PROVIDE MOUNTING BOARD, THREE (3) GFI DUPLEX RECEPTACLES, & CABLE CONDUIT.
  - SOLID/HD/AMNIFOLD BOX WILL HAVE DRAIN TO NEAREST HUB BY PROVIDER.
  - DO NOT LOCATE MISTING SYSTEM ABOVE SINKS. COORDINATE FIN. PROVIDE LAYOUT WITH FOOD LION CONSTRUCTION MANAGER PRIOR TO INSTALL.



2 ROOFTOP MECHANICAL ROOM  
P1.03 SCALE: 3/32" = 1'-0"

1 WATER PIPING PLAN  
P1.03 SCALE: 3/32" = 1'-0"

3 MISTING SYSTEM DETAIL  
P1.03 NOT TO SCALE



Order Plans @ www.LDILine.com