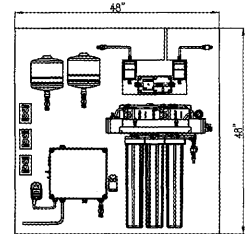
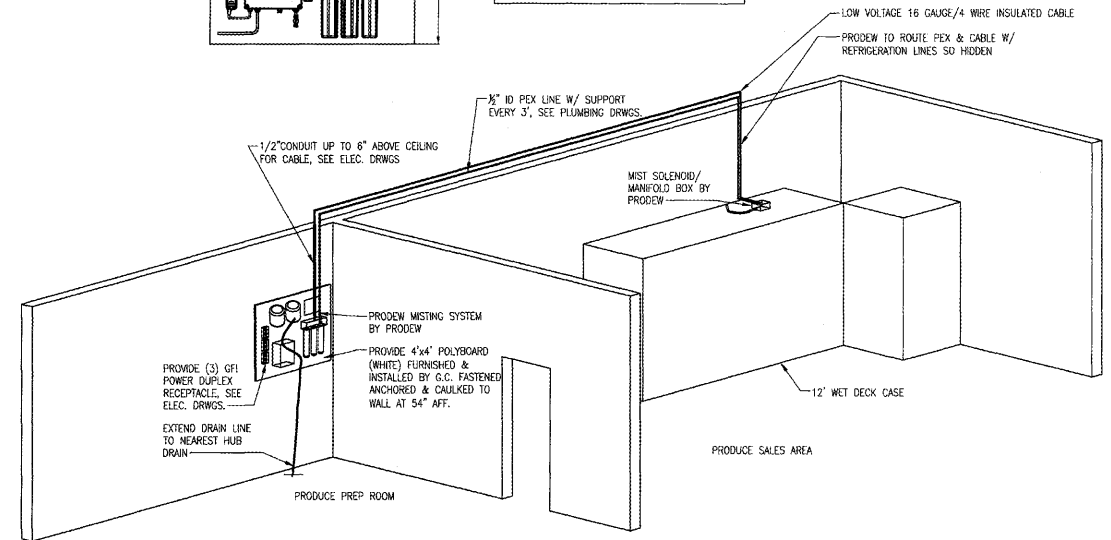


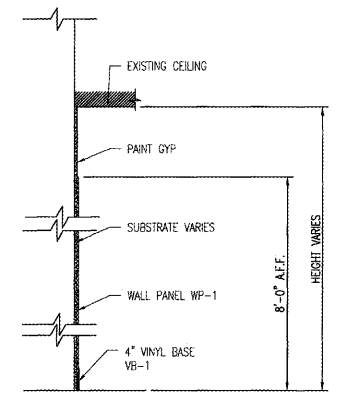
1 CONTROL JOINT DETAIL
A3.01 / SCALE 3/4" = 1'-0"



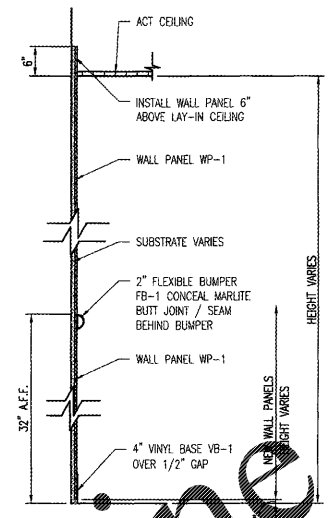
- NOTES:
- PRODEW WILL PROVIDE AND INSTALL ALL EQUIPMENT, CONNECTIONS, & PIPE FITTINGS.
 - PRODEW TO PULL CABLE & 1/2" PEX WATER LINE.
 - G.C. TO PROVIDE MOUNTING BOARD, THREE (3) GFI DUPLEX RECEPTACLES, & CABLE CONDUIT.
 - SOLENOID/MANIFOLD BOX WILL HAVE DRAIN TO NEAREST HUB BY PRODEW.
 - DO NOT LOCATE MISTING SYSTEM ABOVE SINKS.



2 MISTING SYSTEM DETAIL
A3.01 / SCALE 1/4" = 1'-0"

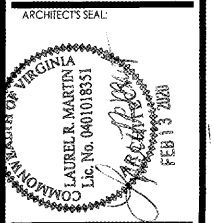


3 SECTION @ SALES & WORK ROOM
A3.01 / SCALE 3/4" = 1'-0"



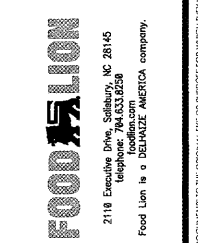
4 SECTION @ CORRIDOR
A3.01 / SCALE 1" = 1'-0"

Order Plans @ www.LDILine.com



ENGINEER'S SEAL:

REVISIONS		
NO	DATE	REMARKS



FOOD LION
REMODEL
STORE #1208
13490 DUMFRIES RD
MANASSAS, VA 20112

PROJECT NO: 2019.0917
DATE: 2-13-20

13 OF 47
A3.01
WALL SECTIONS

CHECKED: JM DRAWN: EC

COPYRIGHT © 2020 INTERPLAN LLC. REPRODUCTION OF THESE DOCUMENTS TO THE ORIGINAL SIZE OR PURPOSE FOR WHICH THEY WERE PREPARED, REPRODUCTIONS, CHANGES OR ASSIGNMENTS ARE PROHIBITED.