

PRICING SET
NOT FOR
CONSTRUCTION

EXPIRATION DATE:
COPYRIGHT NOTICE
THE DRAWINGS ARE THE
PROPERTY OF RIVER STREET
ARCHITECTURE LLC. ANY USE,
REUSE, REPRODUCTION, DISPLAY,
OR SALE OF THESE DRAWINGS
WITHOUT THE EXPRESS WRITTEN
CONSENT OF THE ARCHITECT IS
STRICTLY PROHIBITED.

river street
ARCHITECTURE
123 E 7th street, suite 400 chattanooga, tennessee 37402
p 423 634 0806 www.riverstreetarchitecture.com

DRS. BRUCE & SMITH MEDICAL OFFICES
ORTHOPEDIC OFFICES
1ST FLOOR
RIVERFRONT PARKWAY
CHATTANOOGA, TN 37402

Revision Schedule
Rev. # | Rev. Date | Revision Description
Release Date: 05.10.2020
Project No.: 20021
SCHEDULES AND
DETAILS

A3.01

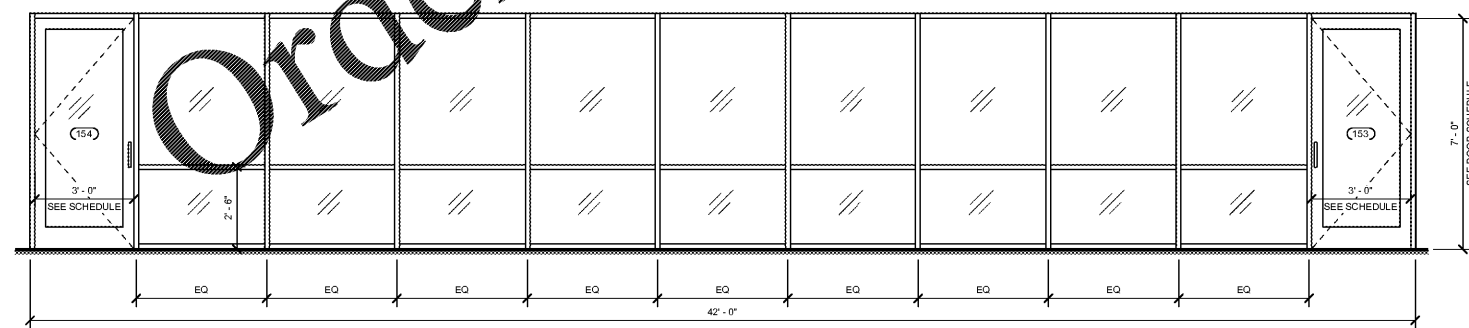
FINISH SCHEDULE											
Name	NUMBER	FLOOR	BASE	NORTH WALL	SOUTH WALL	EAST WALL	WEST WALL	CASEWORK	COUNTER TOPS	CEILING FINISH	COMMENTS
WAITING	100	LVT-1 (ASHLAR PATTERN)	RB-1			PNT-3				ACT-1	
BACK ROOM #1	101	LVT-1 (ASHLAR PATTERN)	RB-1							ACT-1	
ICE ROOM	102	LVT-1 (HERRINGBONE PATTERN)	RB-1							ACT-1	
BACK ROOM #2	103	LVT-1 (ASHLAR PATTERN)	RB-1							ACT-1	
DR OFFICE	104	LVT-1 (HERRINGBONE PATTERN)	RB-1		PNT-4					ACT-1	
DR OFFICE	105	LVT-1 (HERRINGBONE PATTERN)	RB-1			PNT-4				ACT-1	
DR OFFICE	106	LVT-1 (HERRINGBONE PATTERN)	RB-1			PNT-4				ACT-1	
HC TLT	107	LVT-1 (HERRINGBONE PATTERN)	RB-1		WG-1					GYP BD	
NURSE/DOC	108	LVT-1 (ASHLAR PATTERN)	RB-1							ACT-1	
HALL	108	LVT-1 (ASHLAR PATTERN)	RB-1							ACT-1	
EXAM 4	109	LVT-1 (HERRINGBONE PATTERN)	RB-1		PNT-5					ACT-1	
NURSE/DOC	110	LVT-1 (ASHLAR PATTERN)	RB-1							ACT-1	
HALL	110	LVT-1 (ASHLAR PATTERN)	RB-1							ACT-1	
EXAM 3	111	LVT-1 (HERRINGBONE PATTERN)	RB-1			PNT-5				ACT-1	
EXAM 2	112	LVT-1 (HERRINGBONE PATTERN)	RB-1			PNT-5				ACT-1	
EXAM 1	113	LVT-1 (HERRINGBONE PATTERN)	RB-1			PNT-5				ACT-1	
HALL	114	LVT-1 (ASHLAR PATTERN)	RB-1							ACT-1	
RECEPTION	115	LVT-1 (HERRINGBONE PATTERN)	RB-1							ACT-1	
LAB	116	LVT-1 (ASHLAR PATTERN)	RB-1							ACT-1	
CAST	117	LVT-1 (HERRINGBONE PATTERN)	RB-1							ACT-1	
X-RAY	118	LVT-1 (HERRINGBONE PATTERN)	RB-1							ACT-1	
HALL	119	LVT-1 (ASHLAR PATTERN)	RB-1							ACT-1	
SCHEDULING	120	LVT-1 (HERRINGBONE PATTERN)	RB-1							ACT-1	
EXAM 5	121	LVT-1 (HERRINGBONE PATTERN)	RB-1		PNT-5					ACT-1	
EXAM 6	122	LVT-1 (HERRINGBONE PATTERN)	RB-1			PNT-5				ACT-1	
EXAM 7	123	LVT-1 (HERRINGBONE PATTERN)	RB-1			PNT-5				ACT-1	
HALL	124	LVT-1 (ASHLAR PATTERN)	RB-1							ACT-1	
NURSE/DOC	125	LVT-1 (ASHLAR PATTERN)	RB-1							ACT-1	
EXAM 9	126	LVT-1 (HERRINGBONE PATTERN)	RB-1		PNT-5					ACT-1	
HALL	127	LVT-1 (ASHLAR PATTERN)	RB-1							ACT-1	
STORAGE	128	LVT-1 (ASHLAR PATTERN)	RB-1							ACT-1	
EXAM 12	129	LVT-1 (HERRINGBONE PATTERN)	RB-1	PNT-5				PLAM-1	PLAM-3	ACT-1	
EXAM 11	130	LVT-1 (HERRINGBONE PATTERN)	RB-1	PNT-5				PLAM-1	PLAM-3	ACT-1	
EXAM 10	131	LVT-1 (HERRINGBONE PATTERN)	RB-1	PNT-5				PLAM-1	PLAM-3	ACT-1	
STORAGE	132	LVT-1 (ASHLAR PATTERN)	RB-1							ACT-1	
STORAGE	133	LVT-1 (ASHLAR PATTERN)	RB-1							ACT-1	
EXAM 15	134	LVT-1 (HERRINGBONE PATTERN)	RB-1	PNT-5						ACT-1	
EXAM 14	135	LVT-1 (HERRINGBONE PATTERN)	RB-1		PNT-5					ACT-1	
EXAM 13	136	LVT-1 (HERRINGBONE PATTERN)	RB-1	PNT-5						ACT-1	
STORAGE	137	LVT-1 (ASHLAR PATTERN)	RB-1							ACT-1	
HALL	138	LVT-1 (ASHLAR PATTERN)	RB-1							ACT-1	
BREAK ROOM	139	LVT-1 (HERRINGBONE PATTERN)	RB-1							ACT-1	
STAFF TLT	140	LVT-1 (HERRINGBONE PATTERN)	RB-1		WG-1					GYP BD	
STAFF TLT	141	LVT-1 (HERRINGBONE PATTERN)	RB-1		WG-1					GYP BD	
NURSE/DOC	142	LVT-1 (ASHLAR PATTERN)	RB-1							ACT-1	
HC TLT	143	LVT-1 (HERRINGBONE PATTERN)	RB-1			WG-1				GYP BD	
SHOWERS	144	CT-2	CT-1		CT-1					GYP BD	
MENS	145	LVT-1 (ASHLAR PATTERN)	RB-1			CT-1	CT-1			ACT-1	
PT STORAGE	146	CPT-1	RB-1							ACT-1	
PT	150	CPT-1	RB-1							ACT-1	
HC TLT	151	LVT-1 (HERRINGBONE PATTERN)	RB-1							ACT-1	
PT OFFICE	152	LVT-1 (HERRINGBONE PATTERN)	RB-1							ACT-1	
STAIR 1	S1	NO WORK THIS AREA								EXISTG TO REMAIN	
STAIR 1	S1.1	NO WORK THIS AREA								EXISTG TO REMAIN	
STAIR 2	S2	NO WORK THIS AREA								EXISTG TO REMAIN	
STAIR 2	S2.1	NO WORK THIS AREA								EXISTG TO REMAIN	
ELEVATOR	X1	NO WORK THIS AREA								EXISTG TO REMAN	

FINISH INFORMATION					
MATERIAL	DESCRIPTION	MANUFACTURER	PATTERN/ PRODUCT NAME	COLOR	COMMENTS
ACT-1	ACOUSTICAL CEILING TILE- 24 X 24 X 5/8"	ARMSTRONG	DUNE (1774)	WHITE	
CG-1	CORNER GUARDS	INPRO			
CPT-1	CARPET PLANK	INTERFACE			
CT-1	CERAMIC WALL TILE			WHITE SUBWAY TILE	GROUND L CONCRETE COLOR- RAVEN 45
CT-2	CERAMIC FLOOR TILE				
LVT-1	LUXURY VINYL TILE- 25CM X 1M PLANK	INTERFACE	NATURAL WOODGRAINS- LEVEL SET	WASHED WHEAT (A00207)	SEE PLAN FOR INSTALLATION PATTERN
PLAM-1	PLASTIC LAMINATE CABINETRY	WILSONART	PREMIUM LAMINATE	ITALIAN SILVER ASH (8217K-16)	CENTRAL RUSTIC FINISH
PLAM-2	PLASTIC LAMINATE CABINETRY	WILSONART	SOLCOR	DESIGNER WHITE (8354-01)	GLOSS FINISH
PLAM-3	PLASTIC LAMINATE COUNTERS & BACKSPLASH	WILSONART	PREMIUM LAMINATE	POLISHED CHOCOLATE (5022K-22)	
PNT-1	PAINT, TYPICAL WALLS	SHERWIN WILLIAMS		NATURAL CHOICE (SW 7011)	
PNT-2	PAINT, TYPICAL WALLS	SHERWIN WILLIAMS		WORKING GRA	
PNT-3	PAINT, ACCENT WALL (SEE FINISH SCHEDULE)	SHERWIN WILLIAMS		WALL STREET (SW 7665)	SEE PLAN FOR ACCENT WALL
PNT-4	PAINT, ACCENT WALL (SEE FINISH SCHEDULE)	SHERWIN WILLIAMS		TRIMMED WOOD (SW 9117)	SEE PLAN FOR ACCENT WALL
PNT-5	PAINT, ACCENT WALL (SEE FINISH SCHEDULE)	SHERWIN WILLIAMS		TRIMMING WOOD (SW 6216)	SEE PLAN FOR ACCENT WALL
PNT-6	PAINT, CEILING PAINT	SHERWIN WILLIAMS		EXTREME WHITE (SW 7006)	
PNT-7	PAINT, TRIM (DOORS AND WINDOWS)	SHERWIN WILLIAMS		ANONIMOUS (SW 7046)	
RB-1	4" RUBBER BASE	FLEXCO	WALLCOVERING		
SS-1	SOLID SURFACE COUNTER TOPS- 1 1/4" QUARTZ SLAB	DALTILE	ALUMINUM WITH MOLDURE	WOVEN WOOL (N009- POLISHED)	VERIFY WITH OWNER
TWP-1	TEXTURED WALL PANEL - 48" X 96"	SOELBERG INDUSTRIES			
WG-1	WALL GUARD- 4 WAINSCOT- 4X8"	INPRO	PALLADIUM RIGID SHEET	PEWTER GRAY (0107)	

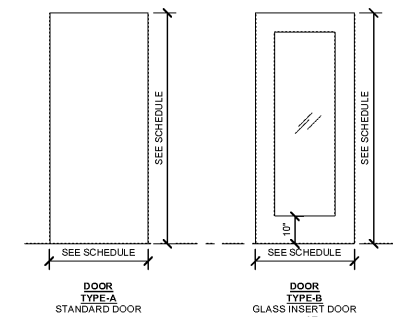
DOOR SCHEDULE												
Door No.	Elevation	Door				Frame		Fire Rating	Hardware	Comments		
		Width	Height	Material	Finish	Type	Finish					
100A	A	3'-0"	7'-0"	WD	PNT	A	HM PNT	0 HR				
100B	A	3'-0"	7'-0"	WD	PNT	A	HM PNT	0 HR				
101	A	3'-0"	7'-0"	WD	PNT	A	HM PNT	0 HR				
102	A	3'-0"	7'-0"	WD	PNT	A	HM PNT	0 HR				
103	A	3'-0"	7'-0"	WD	PNT	A	HM PNT	0 HR				
103A	A	3'-0"	7'-0"	WD	PNT	A	HM PNT	0 HR				
104	A	3'-0"	7'-0"	WD	PNT	A	HM PNT	0 HR				
105	A	3'-0"	7'-0"	WD	PNT	A	HM PNT	0 HR				
106	A	3'-0"	7'-0"	WD	PNT	A	HM PNT	0 HR				
107	A	3'-0"	7'-0"	WD	PNT	A	HM PNT	0 HR				
108	B	3'-0"	7'-0"	WD/ GLASS	PNT	B	HM PNT	0 HR	6	SLIDING BARN DOOR		
109	A	3'-0"	7'-0"	WD	PNT	A	HM PNT	0 HR				
110	B	3'-0"	7'-0"	WD/ GLASS	PNT	B	HM PNT	0 HR	6	SLIDING BARN DOOR		
111	A	3'-0"	7'-0"	WD	PNT	A	HM PNT	0 HR				
112	A	3'-0"	7'-0"	WD	PNT	A	HM PNT	0 HR				
113	A	3'-0"	7'-0"	WD	PNT	A	HM PNT	0 HR				
114	A	3'-0"	7'-0"	WD	PNT	A	HM PNT	0 HR				
115	A	3'-0"	7'-0"	WD	PNT	A	HM PNT	0 HR				
116	A	3'-0"	7'-0"	WD	PNT	A	HM PNT	0 HR				
117	A	3'-0"	7'-0"	WD	PNT	A	HM PNT	0 HR				
118	A	3'-0"	7'-0"	WD	PNT	A	HM PNT	0 HR				
119	A	3'-0"	7'-0"	WD	PNT	A	HM PNT	0 HR		SEE LITING REFER TO PHYSICIST REPORT		
120A	A	3'-0"	7'-0"	WD	PNT	A	HM PNT	0 HR				
120B	A	3'-0"	7'-0"	WD	PNT	A	HM PNT	0 HR				
121	A	3'-0"	7'-0"	WD	PNT	A	HM PNT	0 HR				
122	A	3'-0"	7'-0"	WD	PNT	A	HM PNT	0 HR				
123	A	3'-0"	7'-0"	WD	PNT	A	HM PNT	0 HR				
124	A	3'-0"	7'-0"	WD	PNT	A	HM PNT	0 HR				
125	B	3'-0"	7'-0"	WD/ GLASS	PNT	B	HM PNT	0 HR	6	SLIDING BARN DOOR		
126	A	3'-0"	7'-0"	WD	PNT	A	HM PNT	0 HR				
128	A	3'-0"	7'-0"	WD	PNT	A	HM PNT	0 HR				
129	A	3'-0"	7'-0"	WD	PNT	A	HM PNT	0 HR	1			
130	A	3'-0"	7'-0"	WD	PNT	A	HM PNT	0 HR	1			
131	A	3'-0"	7'-0"	WD	PNT	A	HM PNT	0 HR	1			
132	A	3'-0"	7'-0"	WD	PNT	A	HM PNT	0 HR	1			
133	A	3'-0"	7'-0"	WD	PNT	A	HM PNT	0 HR	1			
134	A	3'-0"	7'-0"	WD	PNT	A	HM PNT	0 HR	1			
135	A	3'-0"	7'-0"	WD	PNT	A	HM PNT	0 HR	1			
136	A	3'-0"	7'-0"	WD	PNT	A	HM PNT	0 HR	1			
137	A	3'-0"	7'-0"	WD	PNT	A	HM PNT	0 HR				
139	A	3'-0"	7'-0"	WD	PNT	A	HM PNT	0 HR				
140	A	3'-0"	7'-0"	WD	PNT	A	HM PNT	0 HR				
141	A	3'-0"	7'-0"	WD	PNT	A	HM PNT	0 HR				
142	B	3'-0"	7'-0"	WD/ GLASS	PNT	B	HM PNT	0 HR	6	SLIDING BARN DOOR		
143	A	3'-0"	7'-0"	WD	PNT	A	HM PNT	0 HR				
145	A	3'-0"	7'-0"	WD	PNT	A	HM PNT	0 HR				
150	A	3'-0"	7'-0"	WD	PNT	A	HM PNT	0 HR				
151	A	3'-0"	7'-0"	WD	PNT	A	HM PNT	0 HR				
152	SEE 1/A3.01	3'-0"	7'-0"	ALUMN	CLEAR ANOD	SEE 1/A3.01	ALUMN CLEAR ANOD	0 HR				
153	SEE 1/A3.01	3'-0"	7'-0"	ALUMN	CLEAR ANOD	SEE 1/A3.01	ALUMN CLEAR ANOD	0 HR				

- DOOR & FINISH NOTES:**
- WALLS TO BE PNT-1 U.N.O.
 - FINISH SCHEDULE BASED ON PLAN NORTH.
 - ALL METAL DOOR FRAMES TO BE WELDED AT SEAMS AND ALL SEAMS TO BE GROUND SMOOTH.
 - ALL METAL DOOR FRAMES TO HAVE A MIN OF 3 ANCHOR BOLTS PER JAMB
 - VERIFY HARDWARE NEEDS WITH TENANT
 - ALL HARDWARE TO HAVE BRUSHED ALUMN/ SATIN FINISH.
 - COORDINATE ELECTRONIC LOCKING REQUIREMENTS WITH TENANT AND BUILDING OWNER.
 - PROVIDE DOOR SWEEPS AT BASE OF DOORS IN THE FOLLOWING LOCATIONS:
 - ALL EXAM/ PROCEDURE ROOMS
 - ALL TOILET ROOMS

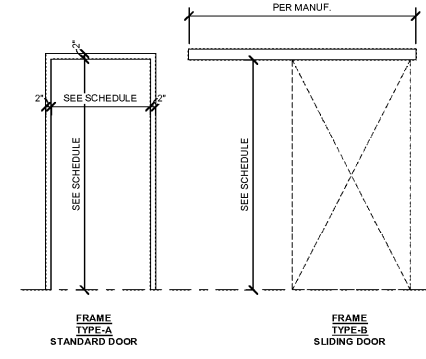
- HARDWARE SCHEDULE**
- | | |
|--|--|
| SET #1: PASSAGE SET
- 1 1/2 PR, 4 1/2 x 4 1/2 HINGES
- PASSAGE FUNCTION LOCKSET | SET #4: PRIVACY FUNCTION SET
- 1 1/2 PR, 4 1/2 x 4 1/2 HINGES
- 1 EA. PRIVACY LEVER |
| SET #2: STOREROOM SET
- 1 1/2 PR, 4 1/2 x 4 1/2 HINGES
- 1 EA. CLOSER
- STORAGE FUNCTION LOCKSET | SET #5: PASSAGE FUNCTION SET
- 1 1/2 PR, 4 1/2 x 4 1/2 HINGES
- 1 EA. PASSAGE LEVER
- 1 EA. CLOSER |
| SET #3: OFFICE SET
- 1 1/2 PR, 4 1/2 x 4 1/2 HINGES
- 1 EA. OFFICE LEVER
- OFFICE FUNCTION LOCKSET | SET #6: SLIDING BARN DOOR
- PASSAGE FUNCTION LOCKSET |



1 PT 150 STOREFRONT ELEV
3/8" = 1'-0"



3 DOOR ELEVATIONS
3/8" = 1'-0"



4 FRAME ELEVATIONS
3/8" = 1'-0"