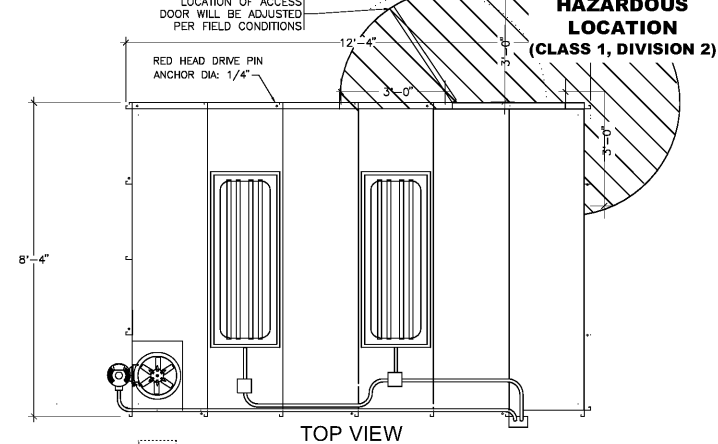


THE ENTIRE AREA IN ALL DIRECTIONS, WITHIN 3'-0" OF THE DOOR OPENING IS A HAZARDOUS LOCATION. ALL ELECTRICAL EQUIPMENT, SWITCHES, BOXES AND ETC...SHALL BE LOCATED BEYOND THIS AREA.



SMALL PAINT MIXING ROOM MODEL: SMR 1202

ROOM SPECIFICATIONS

- UNIT MODEL: SMR 1202 (SMALL PAINT MIXING ROOM)
- LENGTH= 12'-4" O.D. / 12'-0" I.D.
- WIDTH= 8'-4" O.D. / 8'-0" I.D.
- HEIGHT= 8'-3" O.D. / 8'-0" I.D.
- MAN DOOR HEIGHT= 83"
- MAN DOOR WIDTH= 35" INCLUDES OBSERVATION WINDOW AND FUSED LINK LOUVER AT BOTTOM OF DOOR

CONSTRUCTION

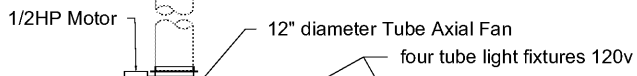
- POWDER COATED WHITE 18 GA. G-90 GALVANIZED STEEL PANELS
- PANEL ASSEMBLY TYPE: 1/4" x 3/4" SELF-TAPPING SCREWS ON 10" CENTERS TYP.

EXHAUST SPECIFICATIONS

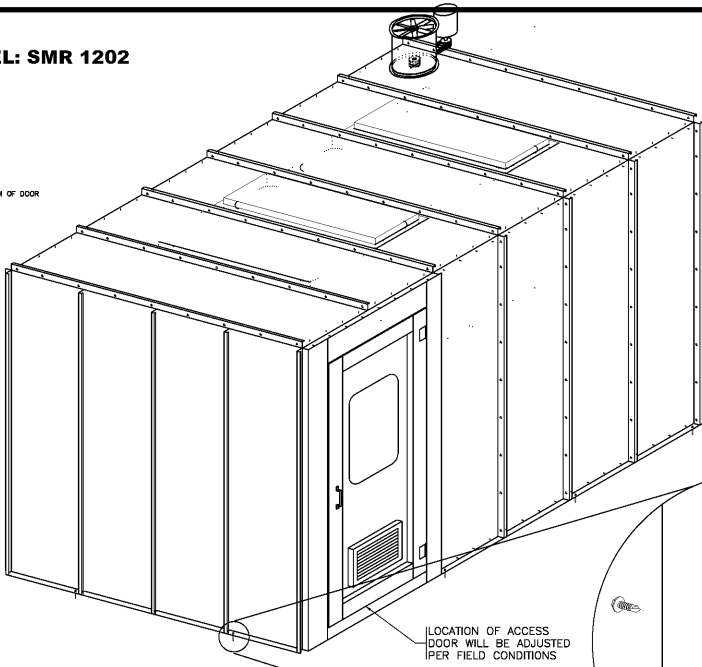
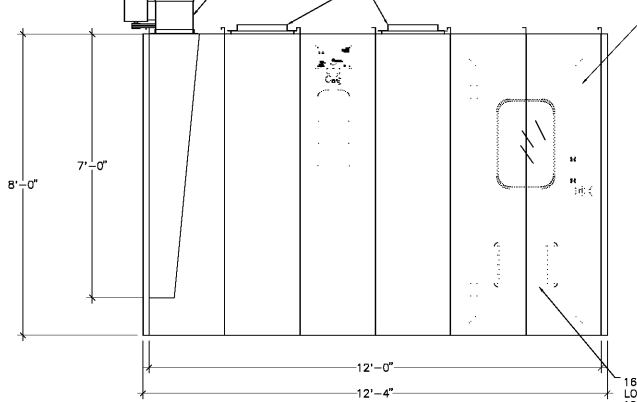
- EXHAUST FAN TYPE: 1-FANS 12" DIAMETER NON-SPARKING BLADE
- MOTOR TYPE: 1/2-HP. SINGLE-PHASE, 230 VOLT.
- C.F.M. RATING= Total 1200 @ 1/2" STATIC PRESSURE

LIGHTING SPECIFICATIONS

- LIGHT FIXTURE TYPE = 4-TUBE FLORESCENT
- VOLTAGE = STANDARD MALS VOLT 120V 60 HERTZ
- QUANTITY = 2-AT 1 AMP EACH
- 4-TYPE = OPEN TYPE



LOCATION OF ACCESS DOOR WILL BE ADJUSTED PER FIELD CONDITIONS



This paint mixing room manufactured by AFC Finishing Systems are designed for code approval. This room construction is a single wall 18 gauge galvanized sheet metal panels with interlocking flanges. Panels are joined with 1/4"-14x3/4" self drilling TEK screws spaced at 18" on centers. The Galvanized steel ACS Panels weight is 2.50 PSF.

All models are manufactured to the standards of the National Board of Fire Underwriters and meet 2012 NFPA 1 Fire Code Chapter 43 for Spraying, Dipping and Coating using flammable or combustible materials, The 2011 (NFPA 33), Occupational Safety and Health Administration (OSHA) standards, and Environmental Protection Agency (EPA) requirements Standard components and accessories are available to comply with any special state or local code requirements.

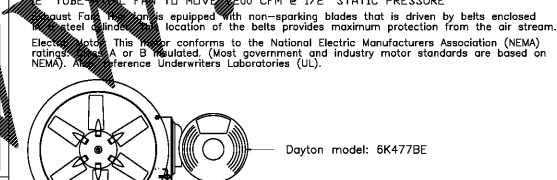
Exhaust Fan: This fan is equipped with non-sparking blades that is driven by belts enclosed in a steel cylinder. This location of the belts provides maximum protection from the air stream.

Electric Motor: This motor conforms to the National Electric Manufacturers Association (NEMA) ratings, Class A or B Insulated. (Most government and industry motor standards are based on NEMA). Also, reference Underwriters Laboratories (UL).

2012 INTERNATIONAL MECHANICAL CODE MINIMUM METAL THICKNESS FOR ROUND DUCTS FOR PRODUCT-CONVEYING SYSTEM DUCTS: SECTION 510 HAZARDOUS EXHAUST SYSTEMS TABLE 510.5

DIAMETER OF DUCT (INCHES)	MINIMUM SHEET THICKNESS (INCHES)
0" TO 6" INCHES	0.024 (24 GAGE)
6" TO 18" INCHES	0.027 (23 GAGE)
18" TO 30" INCHES	0.033 (20 GAGE)
OVER 30" INCHES	0.044 (18 GAGE)

EXHAUST FAN



FIRE-RATED ADJUSTABLE 2-BLADE LOUVER: 1808A REV. C

This Adjustable 2-Blade Louver with Fusible Link is listed for use in Fire Doors up to 1-5/2" Riser Rating. Refer to the Fabricator's Catalog for Details.

1808A REV. C

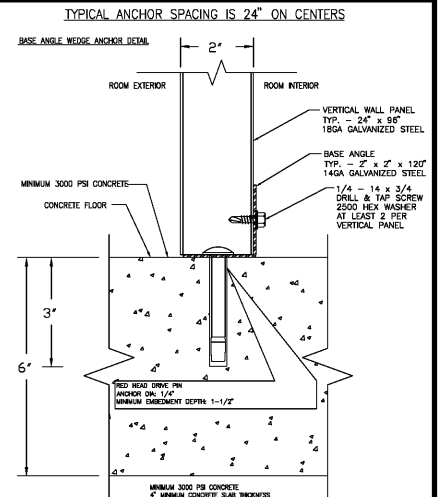
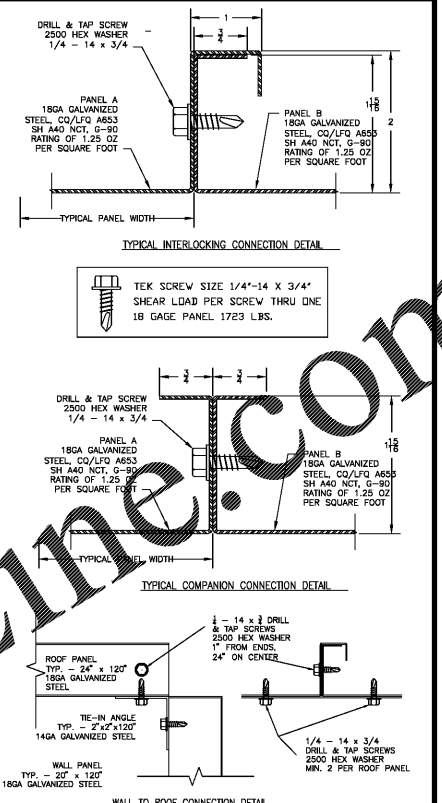
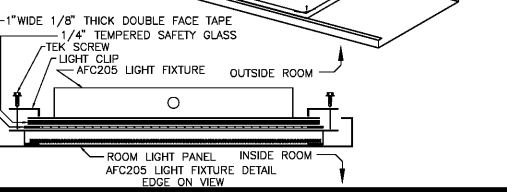
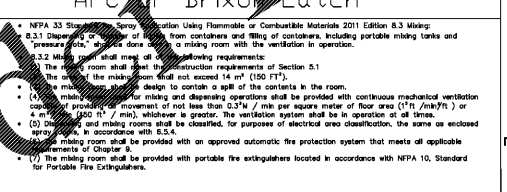
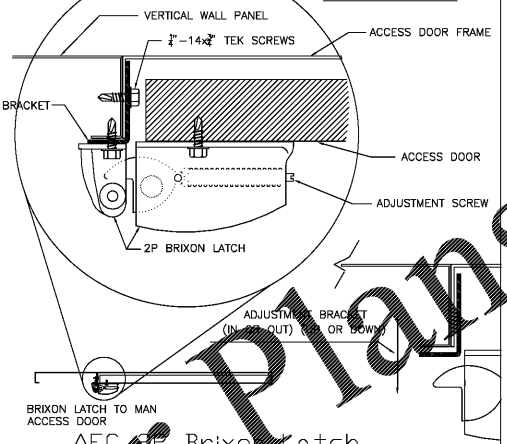
Material: 1/4" gage (3.02) Steel Plate 18x36 1/2" x 9" 1500 20" x 21"

Construction: 1808A is a fire-rated adjustable louver for use in fire doors. It is constructed of 1/4" gage steel plate with two blades. The blades are adjustable and are held in place by a fusible link. The blades are adjustable and are held in place by a fusible link. The blades are adjustable and are held in place by a fusible link.

Dimensions: 18" x 36" x 1/2"

Weight: 15 lbs

Manufacturer: AFC FINISHING SYSTEMS



AFC FINISHING SYSTEMS

250 AIRPORT PARKWAY, ORVILLE, CA 95965

(916) 331-7744 (916) 331-9779 (FAX)

http://www.afc-ca.com email: sales@afc-ca.com

THIS DRAWING IS THE PROPERTY OF AFC FINISHING SYSTEMS AND IS NOT TO BE LOANED, COPIED OR DUPLICATED UNLESS IN DIRECT CONNECTION WITH AFC FINISHING SYSTEMS. ALL RIGHTS RESERVED. THIS DRAWING MUST BE RETURNED UPON REQUEST BY AFC FINISHING SYSTEMS.

DRAWN FOR: O'REILLY AUTO PARTS

DESCRIPTION: SMALL PAINT MIXING ROOM MODEL: SM1202 PERMIT DETAILS

DRAWN BY: JHB CHECKED BY: APPROVED BY: DATE: 05/12/14

INSTALLED BY: FIELD CHANGED BY: SCALE: N.T.S. DRAWING NAME: SMR1202-Permit

MANUFACTURER'S REP: LES LAUGHLIN C: 816-520-3650

PAINT MIXING ROOM USE:

THIS PRE-MANUFACTURED PAINT MIXING ROOM WILL ONLY BE USED FOR MEASURING AND MIXING OF PAINT.

O'Reilly AUTO PARTS

CORPORATE OFFICES: 233 SOUTH PATTERSON SPRINGFIELD, MISSOURI 65802, PHONE: 417-862-2674

CASCO

12 Summit Drive, Suite 100, St. Louis, MO 63143 T: 314.821.1100

PROJECT: EXPANSION O'REILLY AUTO PARTS STORE

493 CRAIGHEAD STREET NASHVILLE, TN 37204

PAINT MIXING ROOM

REVISIONS

NO.	DESCRIPTION	DATE

FOR REFERENCE ONLY

Professional of Record

DRAWN: MAK

CHECKED: MAK

DATE: 04-22-2020

JOB NO.: 120237 (NV3)

SHEET:

MR1