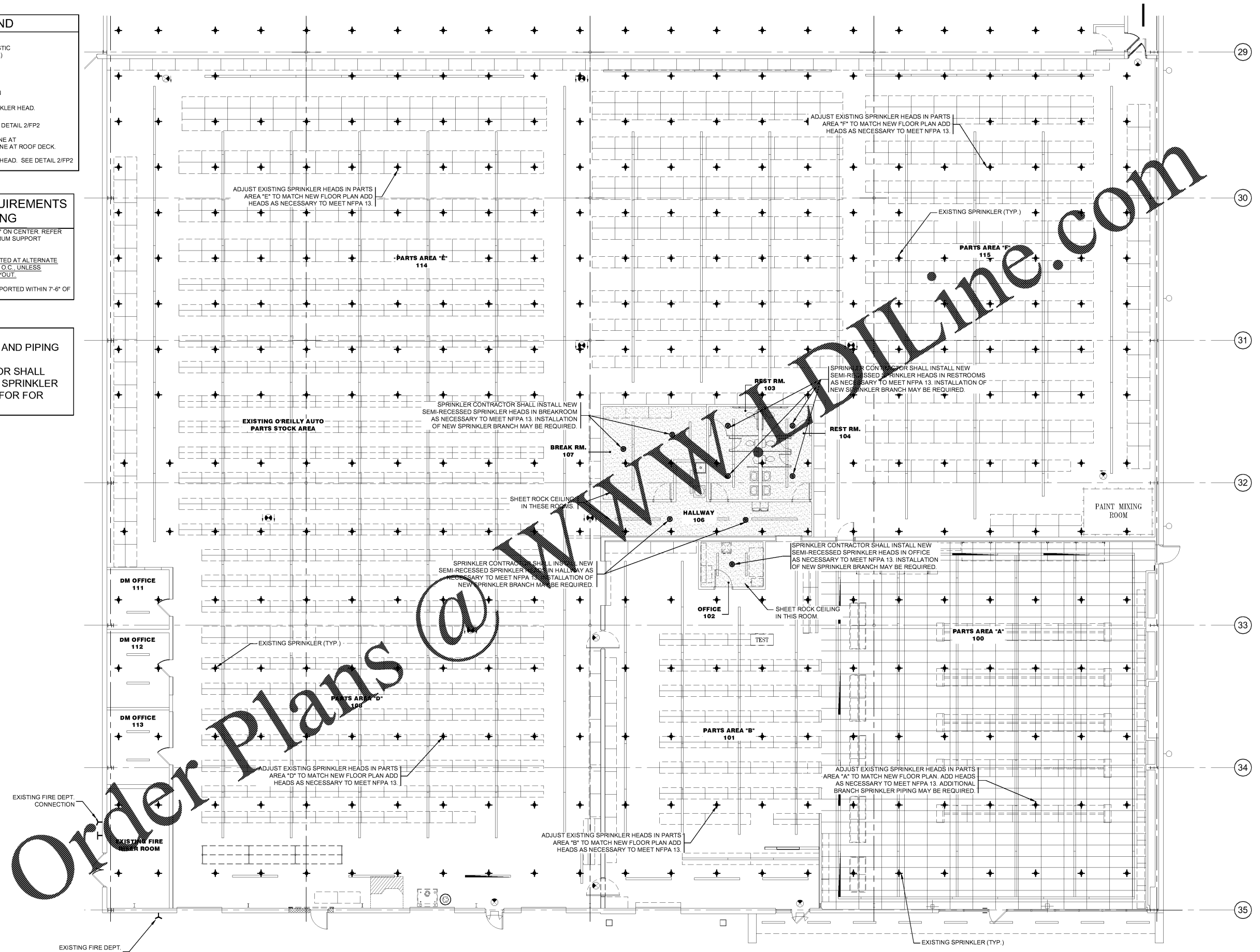


SPRINKLER LEGEND	
FS	FIRE SERVICE & DOMESTIC WATER (BELOW GRADE)
---	FIRE PROTECTION
FPM	FIRE PROTECTION MAIN
●	SEMI-RECESSED SPRINKLER HEAD. SEE DETAIL 2/FP1
SH	SPRINKLER HEAD. SEE DETAIL 2/FP2
SHOSH	2 SPRINKLER HEADS ONE AT CEILING HEIGHT AND ONE AT ROOF DECK.
SWH	SIDE WALL SPRINKLER HEAD. SEE DETAIL 2/FP2

- LOCATION & SUPPORT REQUIREMENTS OF SPRINKLER PIPING**
- PIPES SHALL BE SUPPORTED AT A MAXIMUM OF 5'-0" ON CENTER. REFER TO FIRE PROTECTION SUPPORT DETAILS FOR MINIMUM SUPPORT REQUIREMENTS.
 - FIRE PROTECTION BRANCH PIPE SHALL BE SUPPORTED AT ALTERNATE JOISTS, PURLINS, ETC. AND AT A MAXIMUM OF 10'-0" O.C. UNLESS SHORTER SPACING DICTATED BY PIPING/PIPING LAYOUT.
 - ALL FIRE PROTECTION BRANCH PIPE SHALL BE SUPPORTED WITHIN 7'-6" OF MAIN PIPE.

- NOTES:**
- EXISTING SPRINKLER HEADS AND PIPING SHALL BE FIELD VERIFIED.
 - FIRE SPRINKLER CONTRACTOR SHALL ADJUST/RELOCATE, ADD ALL SPRINKLER HEADS AND SIZE ALL PIPING FOR SPRINKLER SYSTEM.



Order Plans @

**OVERALL PRELIMINARY
FIRE PROTECTION PLAN**

SCALE: 1/8" = 1'-0" AS DEFINED BY NFPA 13



O'Reilly AUTO PARTS

CORPORATE OFFICES: 233 SOUTH PATTERSON
SPRINGFIELD, MISSOURI 65802, PHONE: 417-862-2674

CASCO

12 Summit Drive, Suite 100, St. Louis, MO 63143 T: 314-821-1100

COPYRIGHT 2018 - DESIGNS, DRAWINGS AND SPECIFICATIONS ARE INSTRUMENTS OF SERVICE AND ARE THE PROPERTY OF O'REILLY AUTO PARTS. REPRODUCTION OR DISTRIBUTION WITHOUT THE EXPRESSED WRITTEN CONSENT OF THE DESIGN PROFESSIONAL.

PROJECT:
EXPANSION O'REILLY AUTO PARTS STORE
493 CRAIGHHEAD STREET
NASHVILLE, TN 37204

PRELIMINARY FIRE PROTECTION PLAN

REVISIONS		
NO.	DESCRIPTION	DATE

FOR
REFERENCE
ONLY

Professional of Record

DRAWN: MAK
CHECKED: MAK
DATE: 04-22-2020
JOB NO.: 120237 (NV3)
SHEET:

FP1