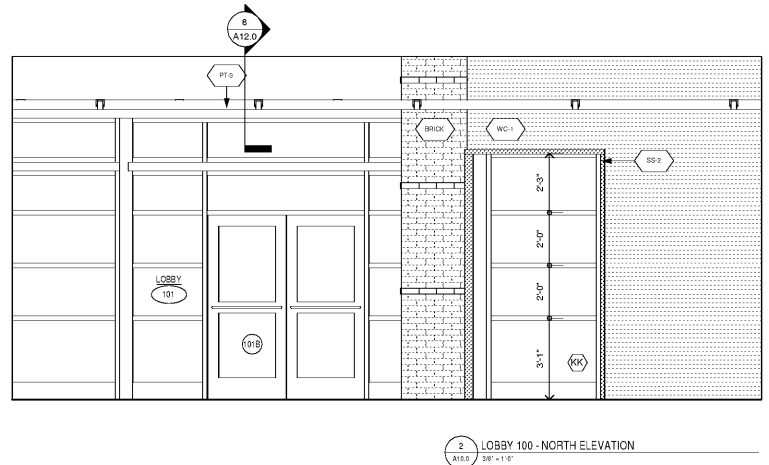
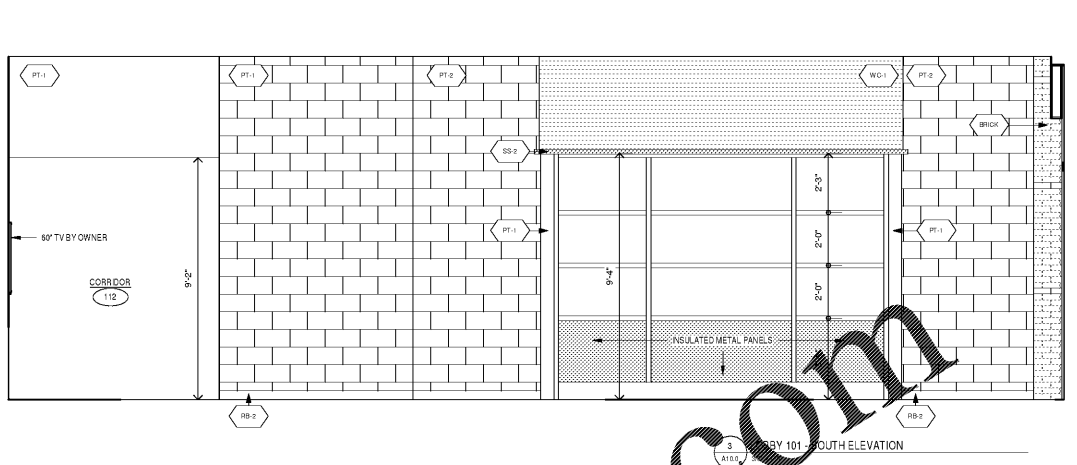


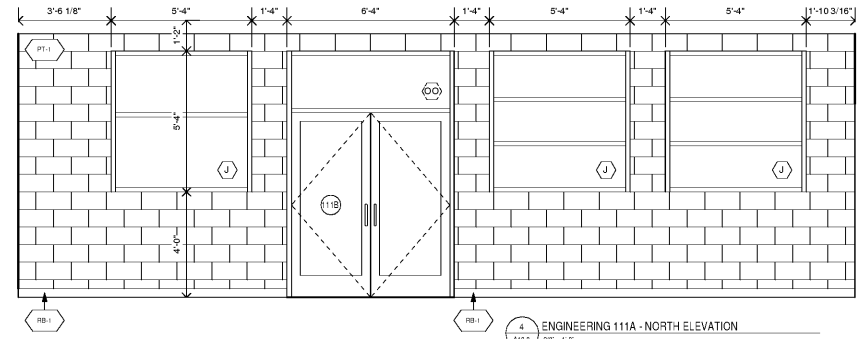
1 LOBBY 101 - EAST ELEVATION
A10.0 30'-11 1/2"



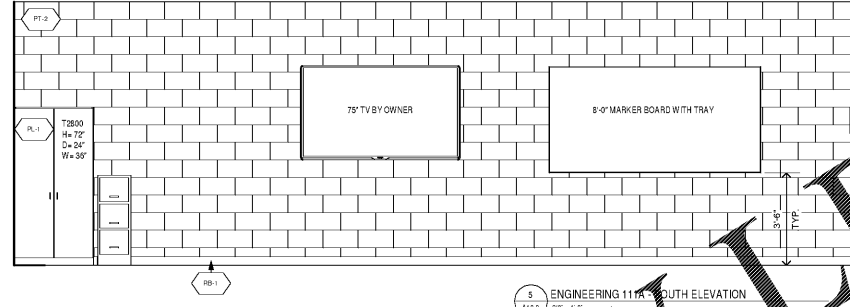
2 LOBBY 100 - NORTH ELEVATION
A10.0 30'-11 1/2"



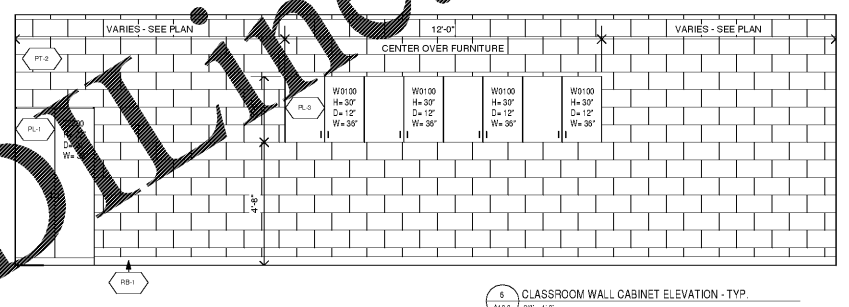
3 LOBBY 101 - SOUTH ELEVATION
A10.0 30'-11 1/2"



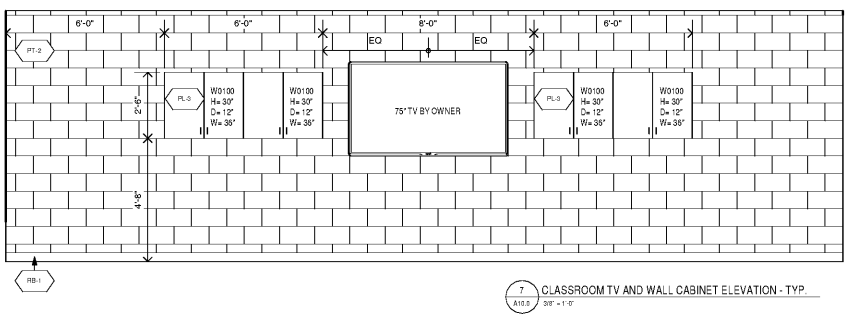
4 ENGINEERING 111A - NORTH ELEVATION
A10.0 30'-11 1/2"



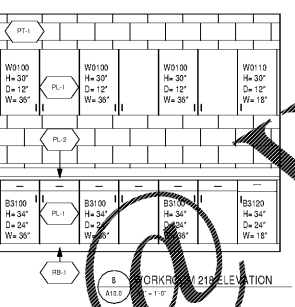
5 ENGINEERING 111A - SOUTH ELEVATION
A10.0 30'-11 1/2"



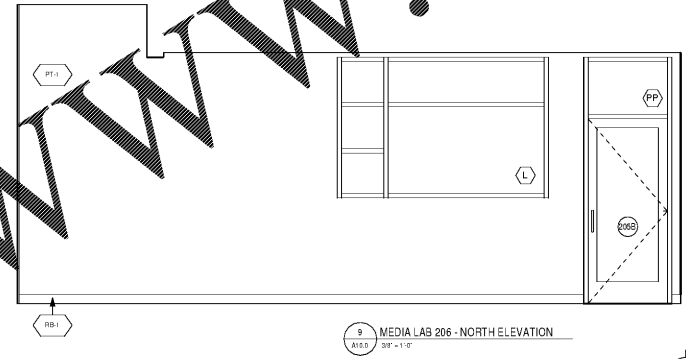
6 CLASSROOM WALL CABINET ELEVATION - TYP.
A10.0 30'-11 1/2"



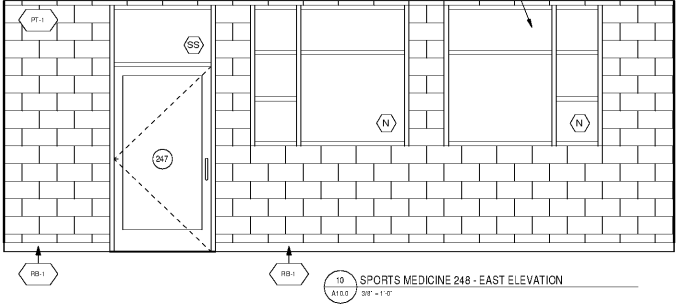
7 CLASSROOM TV AND WALL CABINET ELEVATION - TYP.
A10.0 30'-11 1/2"



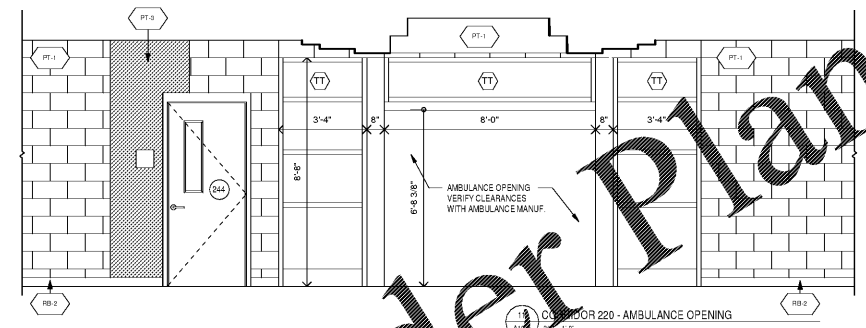
8 WORKROOM 218 ELEVATION
A10.0 30'-11 1/2"



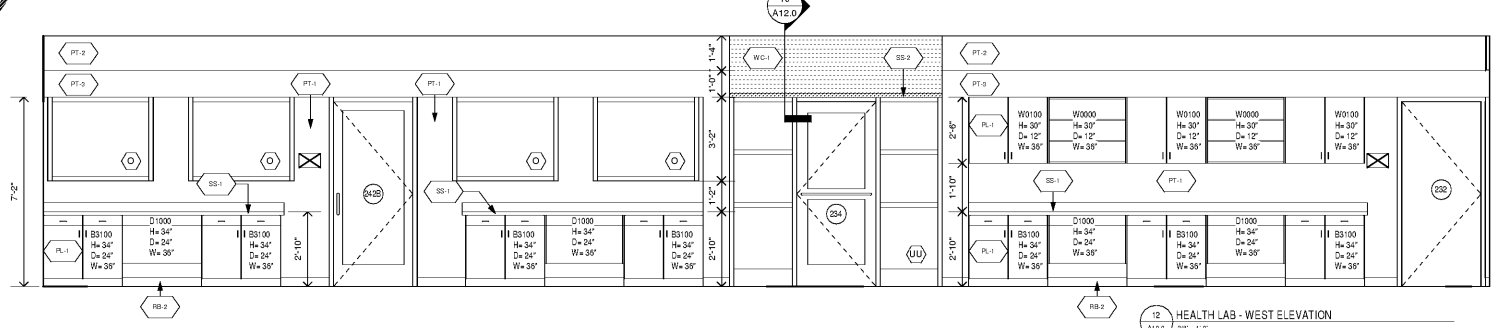
9 MEDIA LAB 206 - NORTH ELEVATION
A10.0 30'-11 1/2"



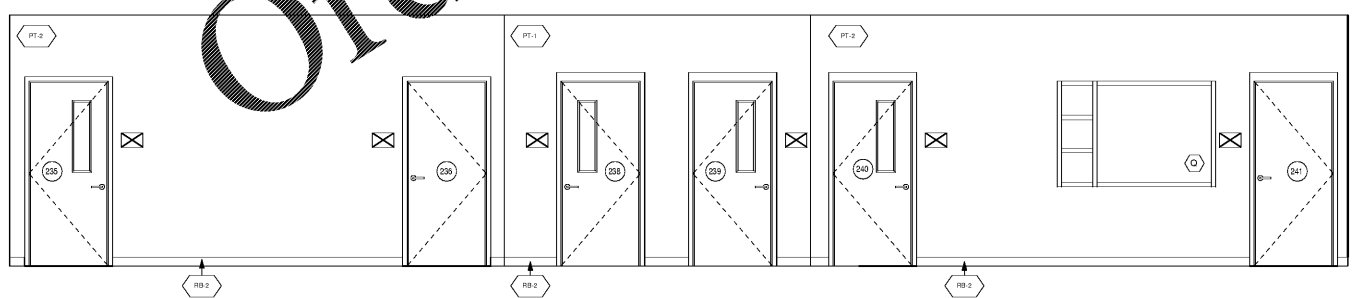
10 SPORTS MEDICINE 248 - EAST ELEVATION
A10.0 30'-11 1/2"



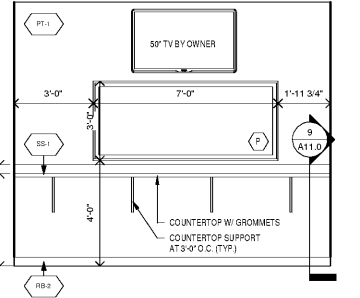
11 OUTDOOR 220 - AMBULANCE OPENING
A10.0 30'-11 1/2"



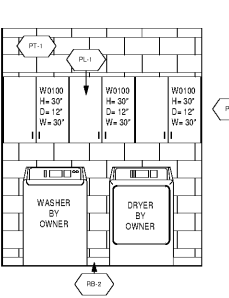
12 HEALTH LAB - WEST ELEVATION
A10.0 30'-11 1/2"



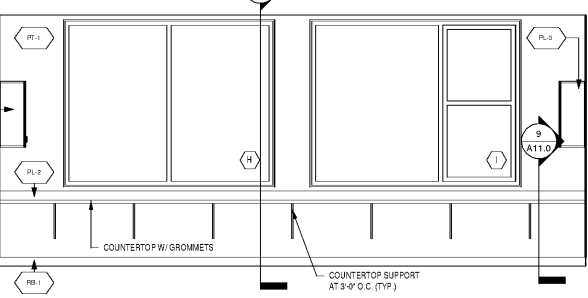
13 HEALTH LAB - EAST ELEVATION
A10.0 30'-11 1/2"



14 OBSERVATION 240 - SOUTH ELEVATION
A10.0 30'-11 1/2"



15 LAUNDRY 236 - EAST ELEVATION
A10.0 30'-11 1/2"



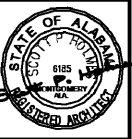
16 PRESS BOX 252 - NORTHEAST ELEVATION
A10.0 30'-11 1/2"

NOTE: ALL CASEWORK IS BASED ON CASE SYSTEMS. SEE MANUFACTURER FOR SPECIFIC PRODUCT INFORMATION.

Order Plans

WWW.LDLINE.COM

Hecht Burdeshaw Architects, Inc.



CENTRAL HIGH SCHOOL CTE ANNEX
PHENIX CITY, ALABAMA

REVISION	DATE

SHEET TITLE
INTERIOR ELEVATIONS

DATE 04/3/20 SHEET A10.0
JOB 2019-010