

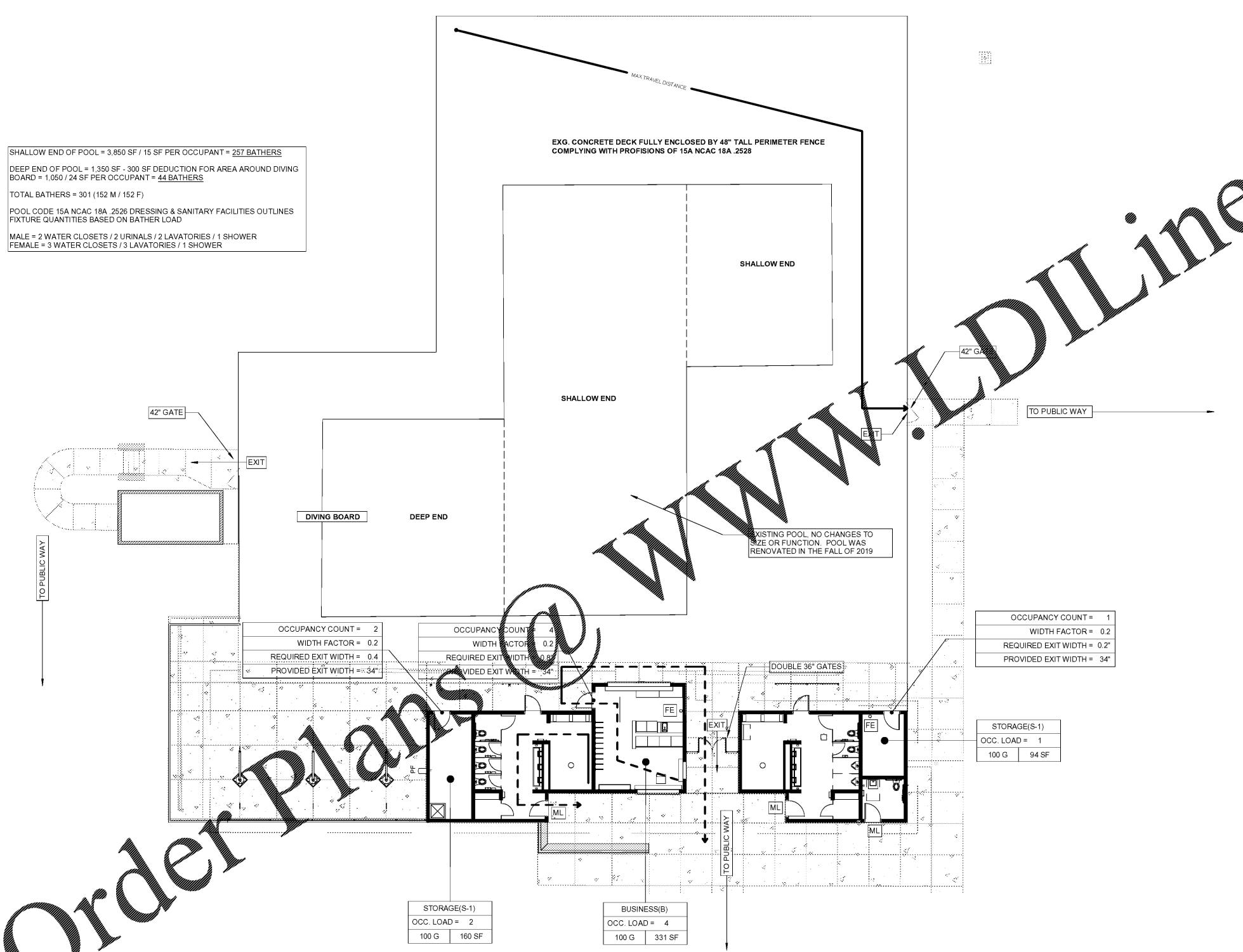
Order Plans @

WWW.LDILine.com

SHALLOW END OF POOL = 3,850 SF / 15 SF PER OCCUPANT = 257 BATHERS  
 DEEP END OF POOL = 1,350 SF - 300 SF DEDUCTION FOR AREA AROUND DIVING BOARD = 1,050 / 24 SF PER OCCUPANT = 44 BATHERS  
 TOTAL BATHERS = 301 (152 M / 152 F)  
 POOL CODE 15A NCAC 18A .2526 DRESSING & SANITARY FACILITIES OUTLINES  
 FIXTURE QUANTITIES BASED ON BATHER LOAD  
 MALE = 2 WATER CLOSETS / 2 URINALS / 2 LAVATORIES / 1 SHOWER  
 FEMALE = 3 WATER CLOSETS / 3 LAVATORIES / 1 SHOWER

EXG. CONCRETE DECK FULLY ENCLOSED BY 48" TALL PERIMETER FENCE  
 COMPLYING WITH PROVISIONS OF 15A NCAC 18A .2528

EXISTING POOL, NO CHANGES TO  
 SIZE OR FUNCTION. POOL WAS  
 RENOVATED IN THE FALL OF 2019



OCCUPANCY COUNT = 2  
 WIDTH FACTOR = 0.2  
 REQUIRED EXIT WIDTH = 0.4  
 PROVIDED EXIT WIDTH = 34"

OCCUPANCY COUNT = 4  
 WIDTH FACTOR = 0.2  
 REQUIRED EXIT WIDTH = 0.8  
 PROVIDED EXIT WIDTH = 34"

OCCUPANCY COUNT = 1  
 WIDTH FACTOR = 0.2  
 REQUIRED EXIT WIDTH = 0.2"  
 PROVIDED EXIT WIDTH = 34"

STORAGE(S-1)  
 OCC. LOAD = 1  
 100 G | 94 SF

STORAGE(S-1)  
 OCC. LOAD = 2  
 100 G | 160 SF

BUSINESS(B)  
 OCC. LOAD = 4  
 100 G | 331 SF

- GENERAL NOTES**
- ALL SMOKE PARTITIONS, SMOKE BARRIERS AND RATED WALLS SHALL:
    - EXTEND AND SEAL TO UNDERSIDE OF FLOOR DECK ASSEMBLY
    - EXTEND AND SEAL TO UNDERSIDE OF FIRE-RATED SUB-CEILING ASSEMBLY WHERE APPLICABLE
    - EXTEND AND SEAL TO EXTERIOR WALL SHEATHING. SEAL ALL VOIDS AND PENETRATIONS WITH THE SPECIFIED RESPECTIVE FIRESTOP SYSTEM
  - HIGHER FIRE RATED WALLS/PARTITIONS SHALL BE CONSTRUCTED FIRST WITH THE LOWER RATING BUTT Joints AND SEALING TO THEM
  - ELECTRICAL DRAWINGS - SEE ADDITIONAL INFORMATION ON SHEET FOR CHARGE TO PUBLIC WAY
  - WHERE LEGEND INDICATES RATED WALLS, EXIT ENCLOSURES, SHAFTS, ELEVATORS, AND INCIDENTAL USE AREAS ARE TO BE RATED WALLS ARE TO BE RATED WALLS TO BE CONSTRUCTED AS FIRE PARTITIONS U.N.O.

**LIFE SAFETY LEGEND**

- 1 HOUR RATED WALL
- 2 HOUR RATED WALL
- EXIT ROUTE
- COMMON PATH OF TRAVEL
- DIAGONAL DISTANCE
- EXIT SIGN
- PH PANIC HARDWARE
- FE FIRE EXTINGUISHER
- ML MAGNETIC LOCK WITH FAIL SAFE REQUEST TO EXIT SENSOR

**KITCHEN**  
 OCCUPANCY (TABLE 1004.1.1)  
 2 OCC. OCCUPANT LOAD  
 200 G | 400 SF SQUARE FOOTAGE  
 ALLOWABLE SF PER OCC.

**OCCUPANCY TYPE LEGEND**

No color scheme assigned to view

**STITCH DESIGN SHOP**

630 N. Liberty Street | Winston-Salem, NC 27101  
 p. 336.701.0130 | www.stitchdesignshop.com

STITCH DESIGN + DEVELOPMENT, PLLC  
 11/5/14  
 WASTON-SALEM, NC

PETER A. FAY  
 11/5/14  
 WASTON-SALEM, NC

**Long Creek Pool House & Shelter**

5801 Bethania Tobaccoville Rd, Winston-Salem, NC 27040

**CONSTRUCTION DOCUMENTS**

Revisions		
No.	Description	Date

date: 03/31/2020  
 commission: 19-400

sheet title:  
**LEVEL 1 LIFE SAFETY PLAN**

sheet no.:  
**A1.03**