

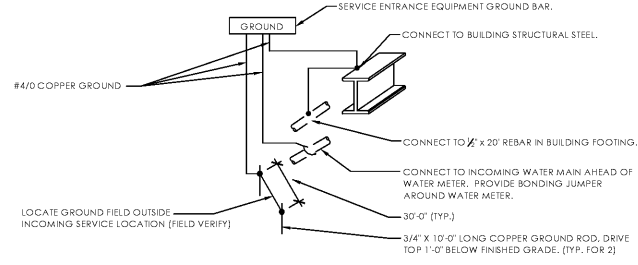
CALCULATED DEMAND LOAD

PEAK DEMAND FOR EXISTING SERVICE AS MEASURED BY ENERGY MANAGEMENT SYSTEM IS 103 KW.
 103KW X 1.25 = 129KW (MAX. DEMAND X 1.25 = EXISTING DEMAND) NEC 220.87.
 (129KW / 0.8) + 65.2KVA = 227KVA 629A. (EXISTING DEMAND + ADDED LOAD = NEW DEMAND LOAD)

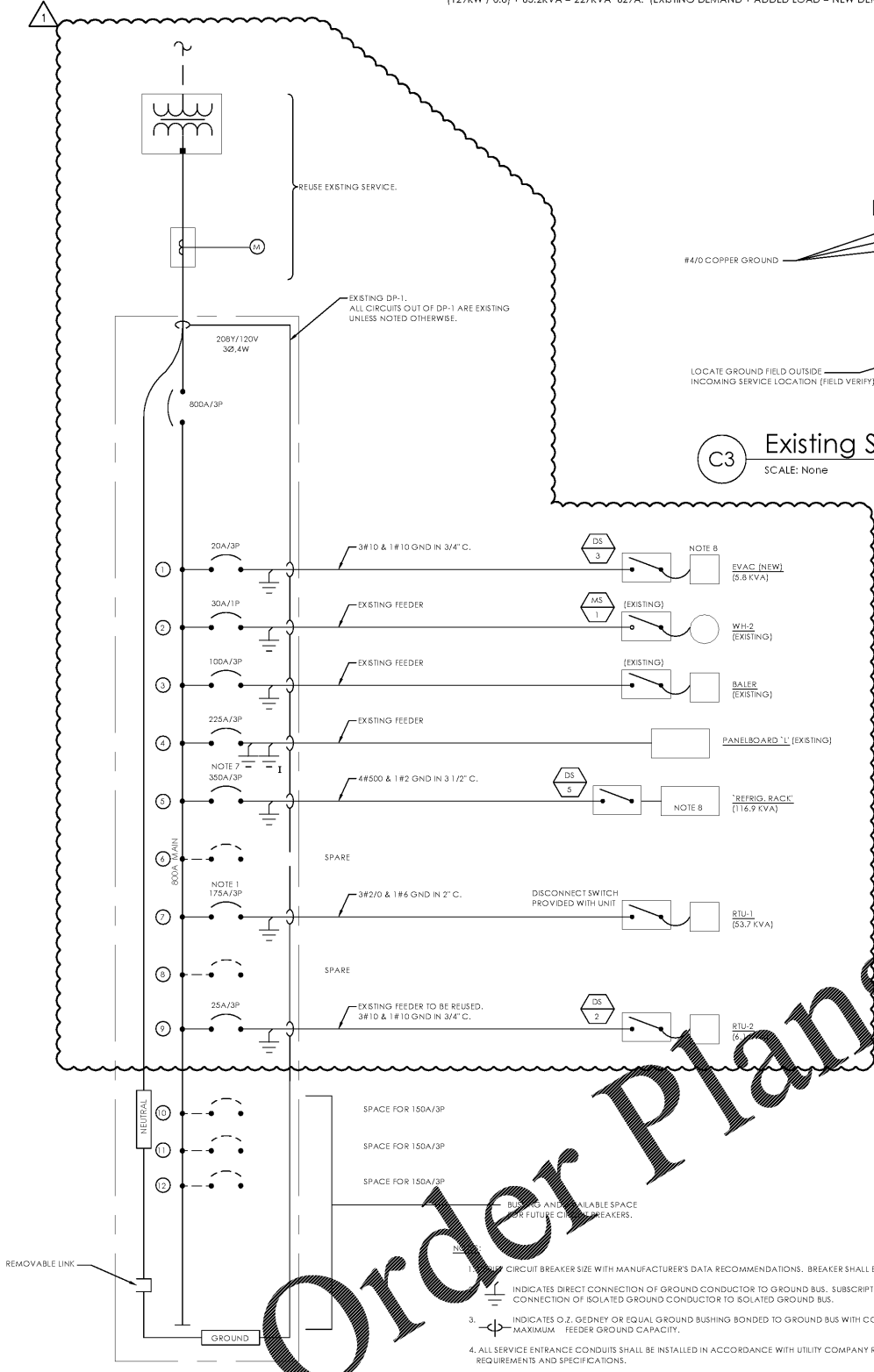
PANEL SCHEDULE NOTES

- E EXISTING CIRCUIT TO REMAIN
- G GFI CIRCUIT BREAKER
- IG ISOLATED GROUND CIRCUIT
- HL FURNISH WITH HANDLE LOCK
- CC ROUTE THROUGH CPC CONTACTOR ENCLOSURE. REFER DETAIL D1/E-102.
- R EXISTING CIRCUIT BREAKER. REVISE LOAD AND/OR DESCRIPTION
- N PROVIDE NEW CIRCUIT BREAKER

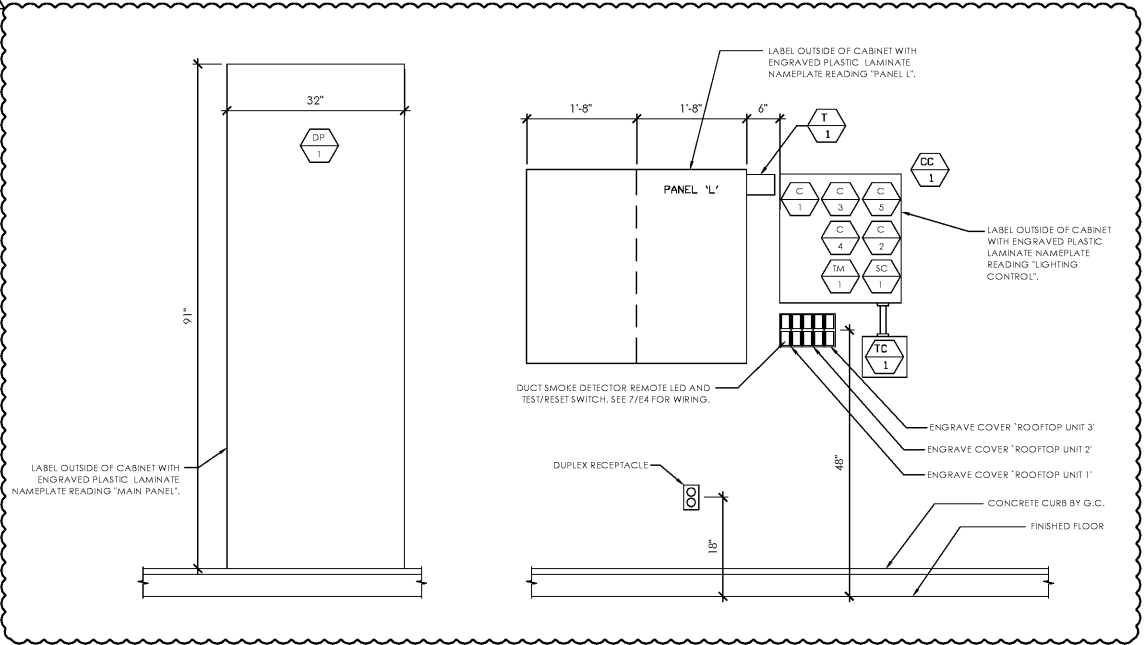
PANEL L		VOLTAGE	208/120	3 PH 4W	225	MLO	AIC RATING	42K	REMARKS:		
		FEEDER AMP	225	MAINS	FEED:	EXISTING	MOUNTING	EXISTING	EXISTING PANEL		
BKR	NOTE	LOAD DESCRIPTION	VA	CKT	PHASE	CKT	VA	LOAD DESCRIPTION	NOTE	BKR	
20/1	R,HL	Night Lighting & Sales Area Exits	600	1	A	2	600	Light Controls	E	20/1	
20/1	R,CC	Sales Area Lighting (Produce)	1176	3	B	4	441	Light Office, Bk., Toil. Uri., EF-1	E	20/1	
25/1	R,CC	Sales Area Lighting (Rear Aisle)	1042	5	C	6	1600	Lights Backroom	E	20/1	
25/1	R,CC	Sales Area Lighting (Rear)	674	7	A	8	1300	Canopy Lights	R,CC	20/1	
20/1	R,CC	Sales Area Lighting (Aisle 4)	1470	9	B	10	420	Building Sign	R,CC	20/1	
25/1	R,CC	Sales Area Lighting (Aisle 3)	1614	11	C	12	1600	Soft Light	E,CC	20/1	
25/1	R,CC	Sales Area Lighting (Aisle 2)	1486	13	A	14	1200	Pyton Sign	E,CC	20/1	
20/1	R,CC	Sales Area Lighting (Aisle 1)	1654	15	B	16	420	Building Sign	R,CC	20/1	
25/1	R,CC	Sales Area Lighting (Front Aisle)	901	17	C	18	600	Checkout Conveyors	E	20/1	
20/1	E,CC	Ex. Clr. Interior Lights	1000	19	A	20	600	Checkout Conveyors	E	20/1	
20/1	E,CC	Ice Freezer Door Lights	1500	21	B	22	3000	UPS-1	E	30/1	
20/1	E,CC	Freezer Door Lights	1700	23	C	24	500	Future Building Sign	R	20/1	
20/1	E,CC	Cooler Door Lights	1900	25	A	26	198	Exterior Building Lights	R	20/1	
15/1	E	Buzzer & Bell Transformer	100	27	B	28	1274	Sales Area Lighting (Che)	R,CC	20/1	
20/1	E,CC	EF-3	500	29	C	30	234	Spot Merchandiser	R,CC	20/1	
20/1	E	Lift Charger	1000	31	A	32	234	Spot Merchandiser	R,CC	20/1	
20/1	E	Floor Scrubber Charger	1900	33	B	34	600	Auto Docs	R	20/1	
20/1	E	Backroom Receptacles, EF-2	1100	35	C	36	600	Auto Docs	R	20/1	
15/1	E	RTU Smoke Detector	200	37	A	38	400	Exterior Lights	R	20/1	
25/1	E,CC	Parking 4 - F10	1900	39	B	40	600	Auto Docs	R	25/1	
25/1	E,CC	Parking 1 - F13	1400	41	C	42	800	Security Control Panel	E	20/1	
25/1	E,CC	Parking 1 - F13	1900	43	A	44	400	Sales Area Receptacles	R	20/1	
20/1	E	Exterior GFI Receptacles	200	45	B	46	500	Security	E	20/1	
20/1	E	Lift Charger	1000	47	C	48	600	Security Recept # FB	E	15/1	
25/1	E	HDI1	2300	49	A	50	200	Security TV	E	20/1	
25/1	E	HDI1	2300	51	B	52	200	Dock Load Leveler	E	20/1	
20/1	R	Spot Merchandiser	600	53	C	54	200	Refrig. Receptacle	E	20/1	
20/1	R	Spot Merchandiser	600	55	A	56	1200	Breakroom Counter GFI Receptacles	E	20/1	
20/1	R	Spot Merchandiser	600	57	B	58	1200	Breakroom Counter GFI Receptacles	E	20/1	
20/1	R	Spot Merchandiser	600	59	C	60	1500	Office Receptacles	E	20/1	
20/1	R	Spot Merchandiser	600	61	A	62	53	Sales Area Destrat Fans	R	20/1	
20/1	R	Spot Merchandiser	600	63	B	64	1488	FCU-1/HP-1	N	20/2	
20/1	R	Spot Merchandiser	600	65	C	66	1488				
20/1	N	Spot Merchandiser	600	67	A	68	0	SPACE			
-		SPACE	0	69	B	70	0	SPACE			
-		SPACE	0	71	C	72	0	SPACE			
-		SPACE	0	73	A	74	0	SPACE			
-		SPACE	0	75	B	76	0	SPACE			
-		SPACE	0	77	C	78	0	SPACE			
-		SPACE	0	79	A	80	0	SPACE			
-		SPACE	0	81	B	82	0	SPACE			
-		SPACE	0	83	C	84	0	SPACE			
Connected Load Per Phase			PH A:	19285	PH B:	24243	PH C:	20779			
Connected VA Demand			1750	2976	593	11700	4900	0	12500	Total VA	64307
Demand			1.25	1.00	1.00	NEC	1.00	0.65	1.00	Amps	178.5
Demand			39673	2976	593	10850	4800	0	12500	Total VA	71392
Demand										Amps	198.2



C3 Existing Service Entrance Grounding Detail
 SCALE: None



D1 Existing One-Line Diagram
 SCALE: None



B1 Existing Utility Area Elevation
 SCALE: N.T.S.

1. CIRCUIT BREAKER SIZE WITH MANUFACTURER'S DATA RECOMMENDATIONS. BREAKER SHALL BE HACR RATED.
2. INDICATES DIRECT CONNECTION OF GROUND CONDUCTOR TO GROUND BUS. SUBSCRIPT "T" INDICATES DIRECT CONNECTION OF ISOLATED GROUND CONDUCTOR TO ISOLATED GROUND BUS.
3. INDICATES O.Z. GEDNEY OR EQUAL GROUND BUSHING BONDED TO GROUND BUS WITH CONDUCTOR SIZED TO MAXIMUM FEEDER GROUND CAPACITY.
4. ALL SERVICE ENTRANCE CONDUITS SHALL BE INSTALLED IN ACCORDANCE WITH UTILITY COMPANY REQUIREMENTS, NEC REQUIREMENTS AND SPECIFICATIONS.
5. CONDUCTOR AND CONDUIT SIZES ON THE LINE AND LOAD SIDES OF ALL NON-FUSIBLE DISCONNECT SWITCHES SHALL BE IDENTICAL UNLESS NOTED OTHERWISE.
6. THE SHORT CIRCUIT RATING OF ALL SERVICE EQUIPMENT AND PANEL BOARDS SHALL BE NOT LESS THAN 42,000 AIC. BEFORE PURCHASING EQUIPMENT THE ELECTRICAL CONTRACTOR SHALL CONTACT THE POWER CO. AND OBTAIN IN WRITING THE MAXIMUM SHORT CIRCUIT CURRENT AVAILABLE AT THE POINT OF SERVICE. ALL EQUIPMENT SHALL BE RATED AND COORDINATED TO NO LESS THAN THIS VALUE.
7. VERIFY REFRIGERATION EQUIPMENT RATING WITH REFRIGERATION CONTRACTOR; MODIFY ASSOCIATED CIRCUIT BREAKER RATING AND EQUIPMENT BRANCH CIRCUIT AS REQUIRED.
8. ELECTRICAL CONTRACTOR ONLY FURNISHES, INSTALLS, AND TERMINATES THE FEEDER FROM DP-1 TO DISCONNECT SWITCH. CONNECTION FROM DISCONNECT SWITCH TO REFRIGERATION EQUIPMENT BY REFRIGERATION INSTALLER. ALL BRANCH WIRING FROM REFRIGERATION RACK TO BE FURNISHED AND INSTALLED BY REFRIGERATION INSTALLER.
9. SERVICE ENTRANCE FEEDER REQUIREMENTS SHOWN ARE MINIMUM REQUIREMENTS. E.C. SHALL FULLY COORDINATE SERVICE ENTRANCE ROUTING AND CONDUIT REQUIREMENTS WITH UTILITY COMPANY PRIOR TO BID.
10. E.C. SHALL COORDINATE AND APPLY FOR ALL SERVICE REQUESTS FROM UTILITY COMPANY AS EARLY AS POSSIBLE TO AVOID DELAYS IN OBTAINING SERVICE.



American Institute of Architects
 310 MILLS AVE. GREENVILLE, SC 29605
 864.242.9881
 plans@narramore.net
 © 2019 NARRAMORE ASSOCIATES, INC.
 COPYRIGHT PROTECTED BY FEDERAL LAW



1597 DRY POND RD.
 JEFFERSON, GA 30549
 706.387.7722
 FAX: 706.387.7701

ALDI FOOD STORE # 54
 2618 Pleasant Hill Road
 Duluth, GA 30096

REVISIONS
 03/03/20

PROJECT DATA
 V1.07 84x170 LW Expansion
PROJECT NUMBER
 19422
ISSUE DATE
 12-10-19

ALDI FOOD STORE #54
 Duluth, GA

DEVITA
 ATLANTA • CHARLOTTE • GREENVILLE • RICHMOND
 877.4.DEVITA • corp@devitainc.com
 Devita & Associates, Inc. Project : 19102-12
 Drawn By: SMD Checked By: TPW

E-401

ONE-LINE DIAGRAM AND SCHEDULES