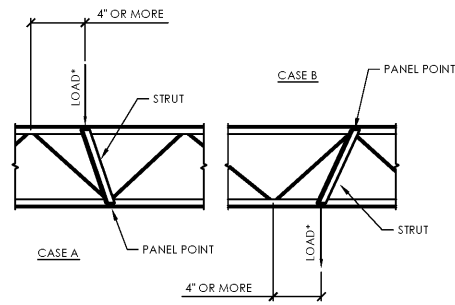


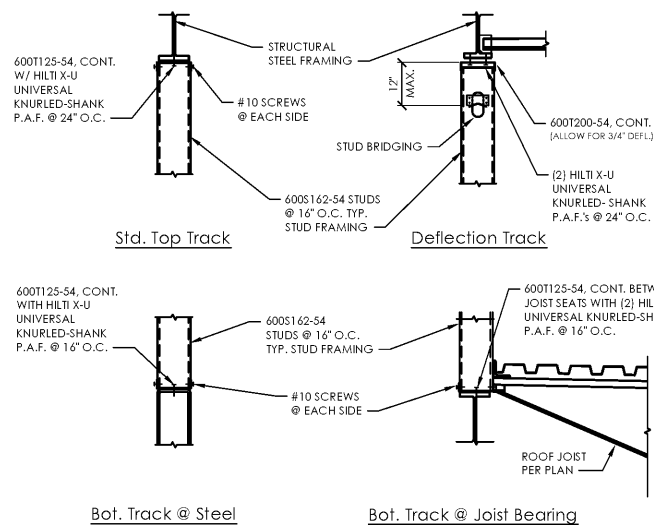
NOTE: WELD OR SCREW DECK EDGES (PARALLEL TO FLUTES) AT 12" O.C. ALONG STEEL SUPPORTS.

1 Typical Roof Deck Fastening System  
NO SCALE



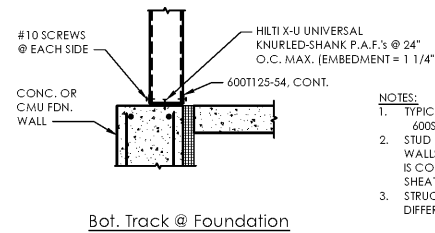
WHEN A CONCENTRATED LOAD EQUAL TO 200 LBS. OR GREATER OCCURS 3" OR MORE FROM A PANEL POINT, A FIELD-WELDED STRUT COMPOSED OF 2-L2x2x3/16 SHALL BE ADDED FROM THE POINT OF LOAD APPLICATION TO THE NEAREST PANEL POINT ON THE OPPOSITE CHORD.

2 Typical Joist Reinforcement Detail  
NO SCALE



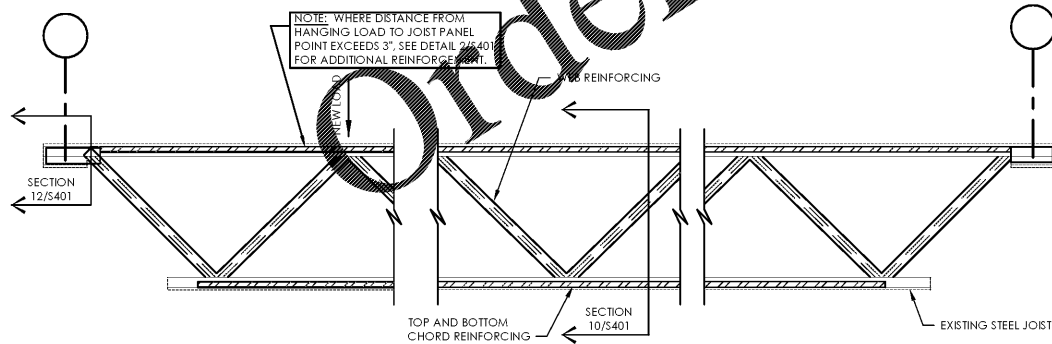
Bot. Track @ Steel

Bot. Track @ Joist Bearing

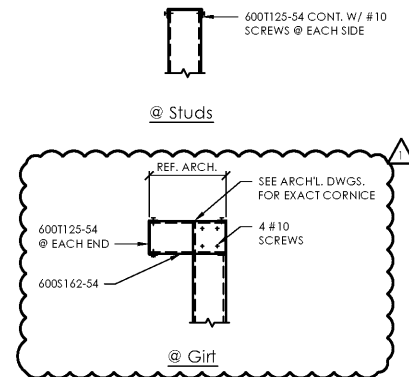


Bot. Track @ Foundation

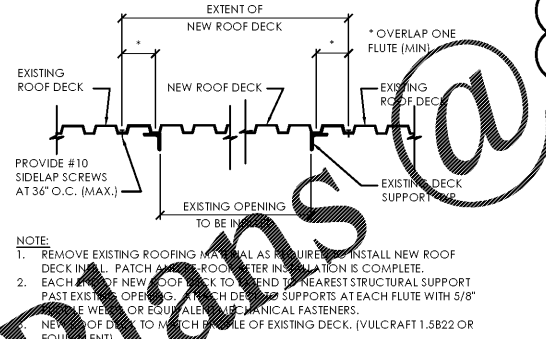
6 Typical CFS Framing Detail  
SCALE: 3/4" = 1'-0"



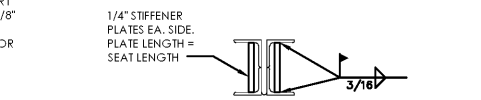
9 Joist Reinforcement Detail  
SCALE: 3/4" = 1'-0"



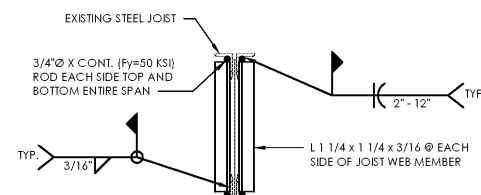
7 Typical Top of Parapet Detail  
SCALE: 3/4" = 1'-0"



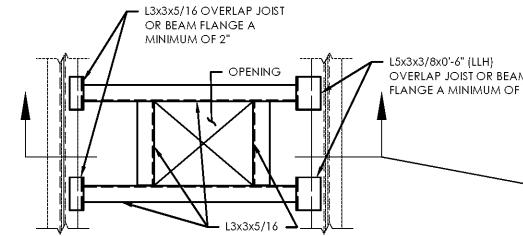
8 Roof Deck Infill Detail  
SCALE: 3/4" = 1'-0"



12 Section  
SCALE: 3/4" = 1'-0"  
NOTE: DO NOT APPLY AT GLG

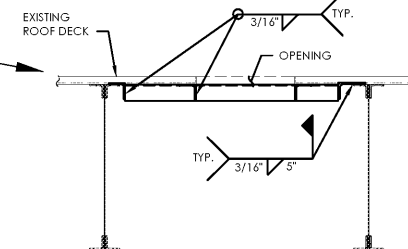


10 Section  
SCALE: 3/4" = 1'-0"

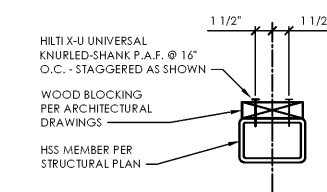


11 Typ. Detail at Roof Openings  
SCALE: 3/4" = 1'-0"

- NOTES:
- SLIDE L5x3 END OF FRAME BETWEEN DECK AND JOIST/BEAM, RAISE L3x3 END AND SLIDE BETWEEN DECK AND ADJACENT JOIST/BEAM SO THAT EACH SIDE OF THE FRAME HAS A MINIMUM OF 2" OVERLAP WITH THE SUPPORTING MEMBER.
  - THE FRAME IS DESIGNED FOR A LOAD OF 400-POUNDS AT EACH FRAME SUPPORT.
  - CONTACT THE ENGINEER IF THE SUPPORTING MEMBER IS LESS THAN 3/16" IN THICKNESS.



12 Frame Detail  
SCALE: 3/4" = 1'-0"



Typical Wood Blocking Attachment Detail  
SCALE: 1/2" = 1'-0"

WWW.LDILine.com



American Institute of Architects

310 MILLS AVE. GREENVILLE, SC 29605  
864.242.9881  
plans@narramore.net

© 2019 NARRAMORE ASSOCIATES, INC.  
COPYRIGHT PROTECTED BY FEDERAL LAW

SEAL



1597 DRY POND RD.  
JEFFERSON, GA 30549  
706.387.7722  
FAX: 706.387.7701

**ALDI FOOD STORE # 54**  
2618 Pleasant Hill Road  
Duluth, GA 30096

REVISIONS  
03-03-2020

**PROJECT DATA**  
V1.07 84x170 LW Expansion  
**PROJECT NUMBER**  
19422  
**ISSUE DATE**  
12-10-19

ALDI FOOD STORE #54  
Duluth, GA

**S-401**

Steel Framing  
Sections & Details

**BRITT PETERS**  
AND  
ASSOCIATES  
INC.  
consulting engineers  
101 Falls Park Drive  
Suite 601  
Greenville, SC 29601  
(864) 271-8869  
(864) 233-5140 Fax  
www.brittpeters.com  
BPA Job No. 190984