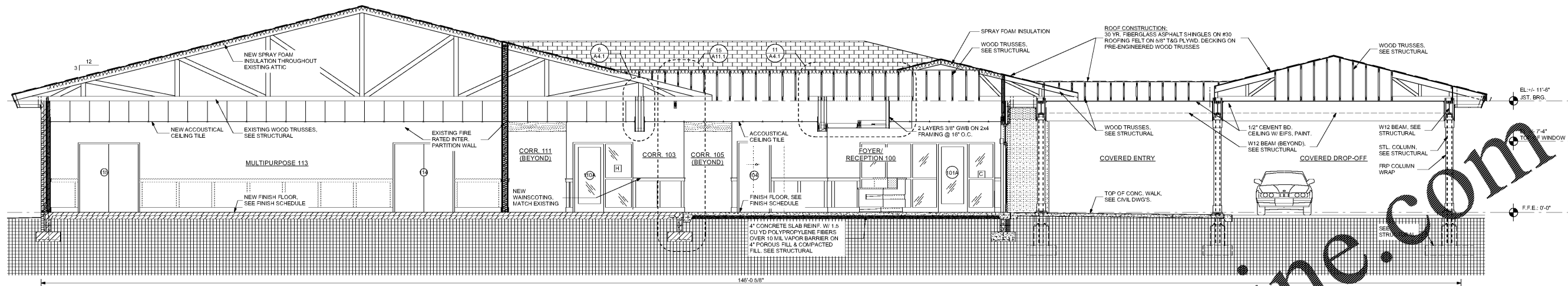




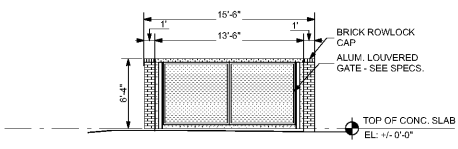
THIS DOCUMENT IS THE PROPERTY OF STUDIO 3 DESIGN GROUP, P.C. THE UNAUTHORIZED REPRODUCTION, COPYING OR OTHER WISE USE OF THIS DOCUMENT IS STRICTLY PROHIBITED. ANY INFRINGEMENT THEREUPON MAY BE SUBJECT TO LEGAL ACTION.
COPYRIGHT 2007
STUDIO 3 DESIGN GROUP, P.C.

MEMBERS OF THE
AMERICAN INSTITUTE OF ARCHITECTS

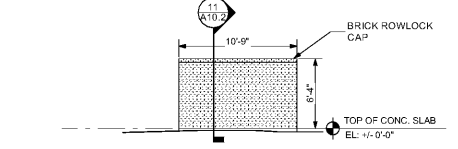
- CIVIL ENGINEER
CIVIL DESIGN SOLUTIONS
- STRUCTURAL ENGINEER
SLATER ENGINEERING
- PLUMBING ENGINEER
DELTA ENGINEERING GROUP, LLC.
- MECHANICAL ENGINEER
DELTA ENGINEERING GROUP, LLC.
- ELECTRICAL ENGINEER
DELTA ENGINEERING GROUP, LLC.



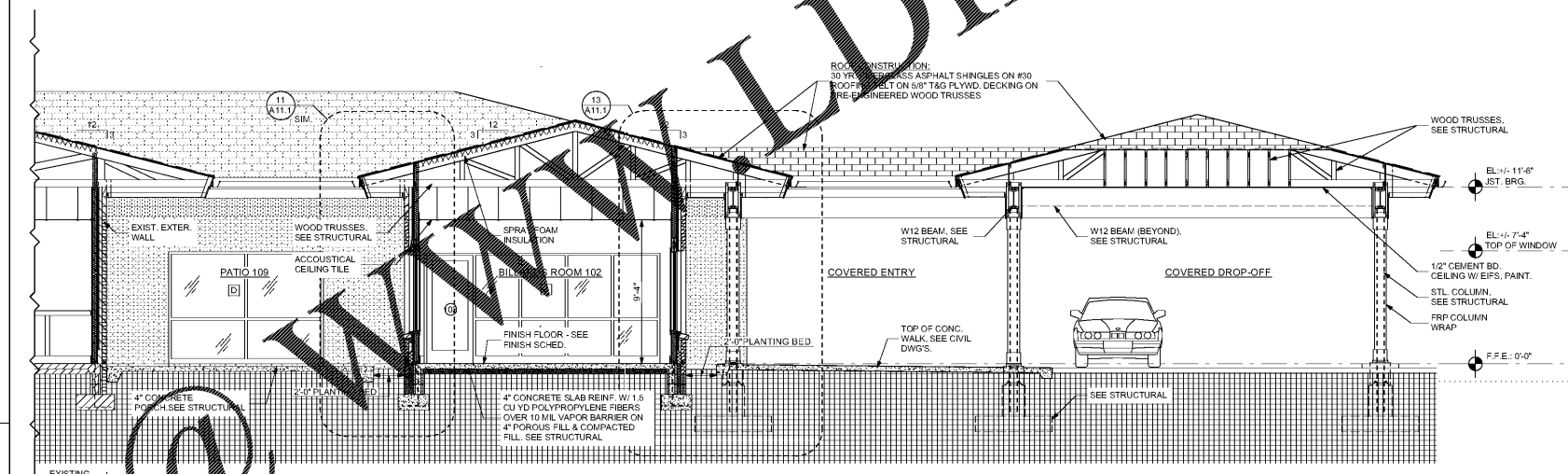
1
SECTION THRU HALL & EXTER. COVERING
SCALE: 3/16" = 1'-0"



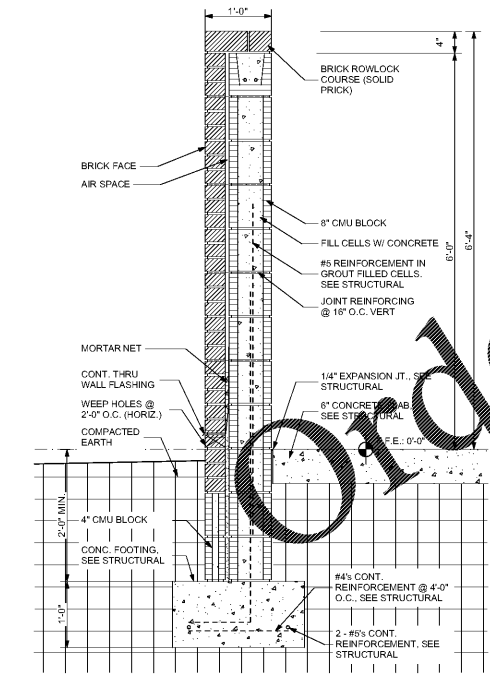
6
DUMPSTER - FRONT ELEV.
SCALE: 1/8" = 1'-0"



6
DUMPSTER - SIDE ELEV.
SCALE: 1/8" = 1'-0"



7
SECTION THRU BILLARDS ROOM
SCALE: 3/16" = 1'-0"



11
SECTION THRU DUMPSTER
SCALE: 3/4" = 1'-0"

BUILDING SECTIONS

ORDER AND RENOVATIONS TO THE
BURKE COUNTY SENIOR CENTER
717 WEST 6TH STREET
WAYNESBORO, GEORGIA

PROJECT NUMBER: 201903

NO.	DATE	REVISIONS

DRAWN BY: LJK
CHECKED BY: SDB
ISSUE DATE: 4/13/2007
PLOT DATE: 4/20/2007

A10.2