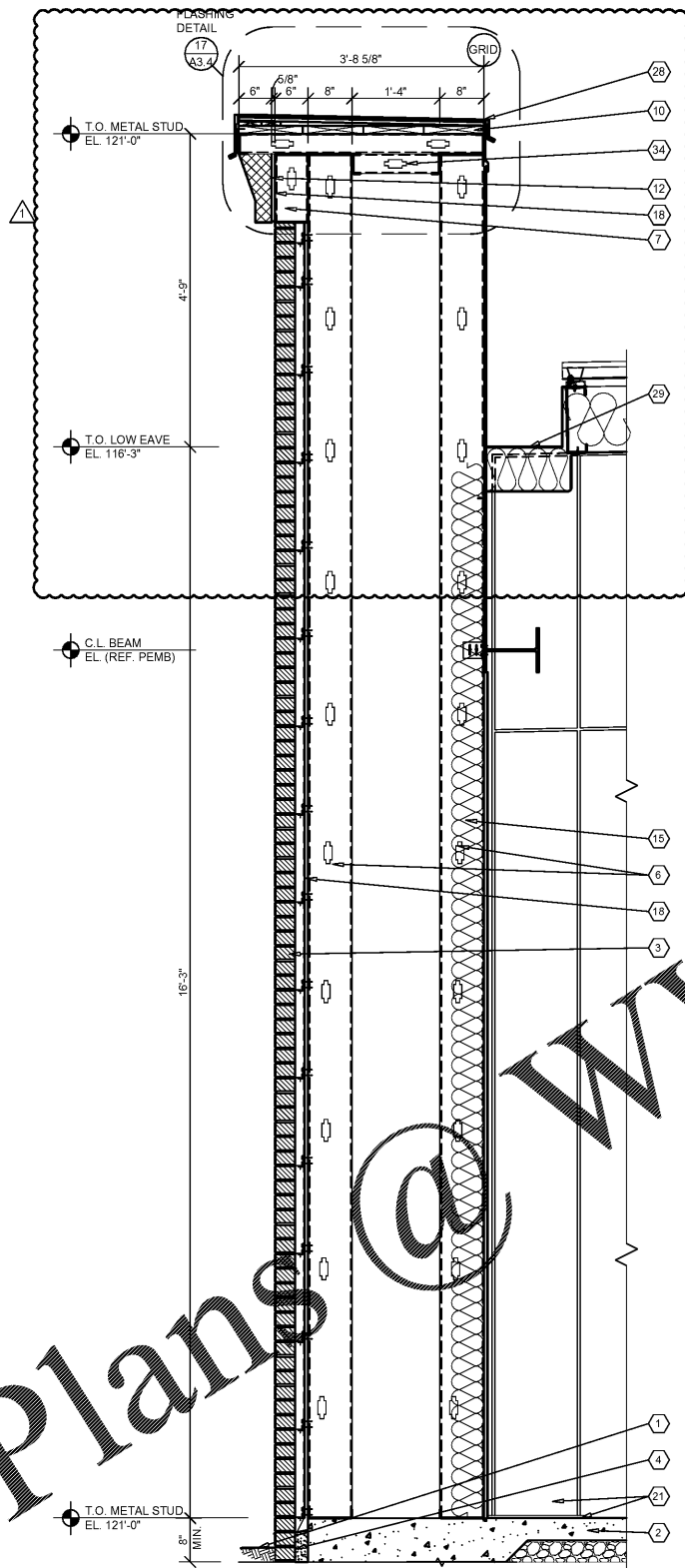
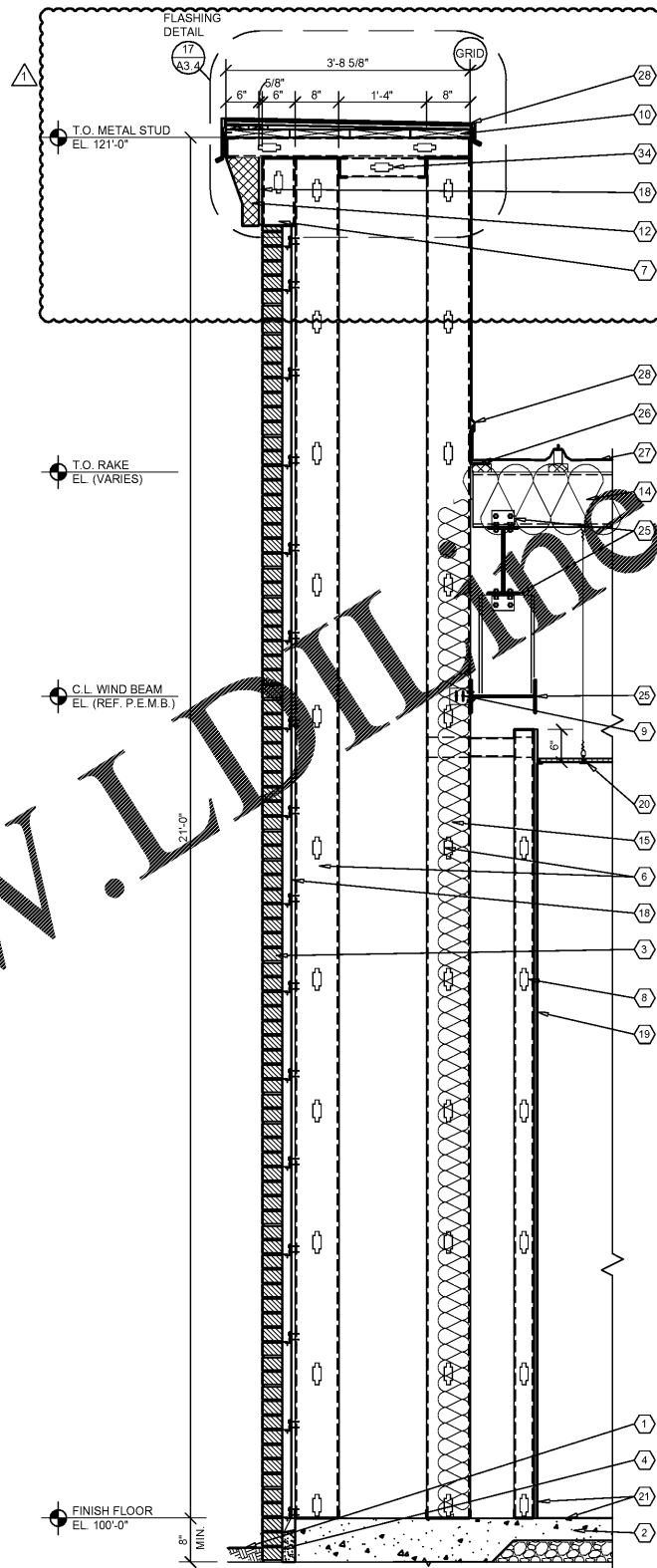


1 WALL SECTION
A3.2 SCALE: 3/4" = 1'-0"



2 WALL SECTION
A3.2 SCALE: 3/4" = 1'-0"



3 WALL SECTION
A3.3 SCALE: 3/4" = 1'-0"

GENERAL NOTES

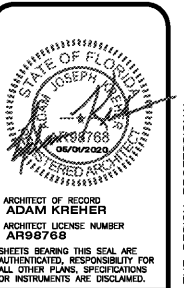
- (A) REFER TO PROJECT MANUAL AND SCOPE OF WORK SCHEDULE FOR ADDITIONAL REQUIREMENTS.
- (B) REFER TO CIVIL, STRUCTURAL, MECHANICAL, ELECTRICAL, PLUMBING AND PRE-ENGINEERED METAL BUILDING (P.E.M.B.) SHOP DRAWINGS FOR ADDITIONAL REQUIREMENTS.
- (C) REFER TO INTERIOR AND EXTERIOR FINISH SCHEDULES FOR MATERIAL TYPES, COLORS AND FINISHES.
- (D) DIMENSIONS ARE TO FACE OF CONCRETE, MASONRY, FRAMING, OR CENTER LINE OF STRUCTURE UNLESS OTHERWISE INDICATED.

KEY NOTES

- (1) FINISH LAWN, PAVEMENT OR SIDEWALK SLOPE TO DRAIN AWAY FROM BUILDING. REFER TO CIVIL DRAWINGS.
- (2) CONCRETE FOR SLAB REFER TO STRUCTURAL DRAWINGS.
- (3) BRICK MASONRY JOINTS IN RUNNING BOND. PROVIDE WALL TIES AT 8" O.C. VERTICAL AND 24" O.C. HORIZONTAL.
- (4) FLEXIBLE FLASHING TO EXTEND UP 8" MIN. AND THROUGH MASONRY JOINTS AT FIRST BED JOINT BELOW FINISH FLOOR. LAP BUTT JOINTS DOWN AND MASTIC. PROVIDE MORTAR NET ABOVE FLASHING. PROVIDE ROPE WEEPS AT 32" O.C. GROUT BELOW GRADE CAVITY FULL.
- (5) (NOT USED)
- (6) 8" COLD FORM METAL FRAMING. REFER TO STRUCTURAL DRAWINGS.
- (7) 6" (18 GA.) COLD FORM METAL STUD FRAMING AT 24" O.C. ATTACHED TO PRE-ENGINEERED METAL BUILDING STRUCTURAL FRAMING SYSTEM.
- (8) 3 5/8" (20 GA.) COLD FORM METAL STUD FRAMING AT 24" O.C. REFER TO INTERIOR WALL TYPES FOR ADDITIONAL REQUIREMENTS.
- (9) COLD FORM METAL STUD FRAMING CLIP. REFER TO STRUCTURAL DRAWINGS.
- (10) FIRE TREATED 2X NAILER(S) CONTINUOUS. CUT TO FIT WALL WIDTH. ATTACHED TO METAL STUD FRAMING WITH #12 SCREWS AT 24" O.C. STAGGERED.
- (11) FIRE TREATED 2X NAILER OR BLOCKING.
- (12) EXTERIOR INSULATION FINISH SYSTEM (EIFS) OVER CONTINUOUS INSULATION DRAINAGE BOARD IN THICKNESS INDICATED.
- (13) (NOT USED)
- (14) PRE-ENGINEERED METAL BUILDING ROOF INSULATION (R-36) LINER SYSTEM (REFER TO SCOPE OF WORK SCHEDULE). VAPOR BARRIER OVER HIGH STRENGTH STEEL SUSPENSION STRAPS ATTACHED TO BOTTOM OF PRE-ENGINEERED METAL BUILDING ROOF PURLINS WITH (1) LAYER 8" (R-25) UN-FACED BATT INSULATION PARALLEL WITH ROOF PURLIN CAVITY AND (1) LAYER 3 1/2" (R-11) UN-FACED BATT INSULATION PERPENDICULAR OVER TOP OF ROOF PURLINS.
- (15) 6" (R-19) BATT INSULATION WITH FOIL FACE VAPOR BARRIER.
- (16) (NOT USED)
- (17) (NOT USED)
- (18) 5/8" EXTERIOR FIBERGLASS REINFORCED SHEATHING WITH CONTINUOUS WEATHER BARRIER. REFER TO STRUCTURAL DRAWINGS FOR ATTACHMENT REQUIREMENTS.
- (19) 5/8" TYPE "X" GYPSUM BOARD. REFER TO INTERIOR WALL TYPES FOR ADDITIONAL REQUIREMENTS.
- (20) SUSPENDED ACOUSTICAL LAY - IN CEILING SYSTEM. REFER TO INTERIOR FINISH SCHEDULE FOR TYPES AND LOCATIONS.
- (21) FLOORING AND BASE. REFER TO INTERIOR FINISH SCHEDULE FOR TYPES AND LOCATIONS.
- (22) (NOT USED)
- (23) (NOT USED)
- (24) (NOT USED)
- (25) PRE-ENGINEERED METAL BUILDING PRIMARY AND SECONDARY STRUCTURAL FRAMING SYSTEMS.
- (26) PRE-ENGINEERED METAL BUILDING TRANSITION SUPPORT PLATE ASSEMBLY.
- (27) PRE-ENGINEERED METAL BUILDING ROOF PANEL SYSTEM WITH THERMAL SPACER BLOCKS (R-5 MIN.).
- (28) PRE-ENGINEERED METAL BUILDING SHEET METAL FLASHING. COUNTER - FLASHING. CONTINUOUS CLEATS, DRIPS CLOSURES, TRANSITIONS, COPINGS AND ACCESSORIES AS REQUIRED.
- (29) PRE-ENGINEERED METAL BUILDING STAINLESS STEEL INTERNAL GUTTER AND THRU WALL SCUPPER SYSTEM. REFER TO P.E.M.B. SHOP DRAWINGS FOR SIZES.
- (30) (NOT USED)
- (31) (NOT USED)
- (32) PRE-FABRICATED ALUMINUM ROOF ACCESS LADDER SYSTEM (PAINT). PROVIDE SECURITY PANEL WITH SIDE GUARDS. LADDER TO COMPLY WITH "OSHA" AND "ANSI" REQUIREMENTS. ALL CONNECTIONS TO BE FACTORY WELDED AND FIELD ANCHORED TO WALL AND CONCRETE SLAB CONSTRUCTION PER MANUFACTURER'S RECOMMENDATIONS. TREADS 12" O.C. MAX. WITH 300 LBS. MINIMUM DESIGN LOAD. LADDER TO BE 1'-6" MINIMUM CLEAR WIDTH BETWEEN VERTICAL SIDE RAILS. PROVIDE 7" MINIMUM CLEARANCE BETWEEN INSIDE FACE OF LADDER AND EXTERIOR WALL ASSEMBLY. SUBMIT SHOP DRAWINGS FOR REVIEW AND APPROVAL.
- (33) (NOT USED)
- (34) 3 5/8" COLD FORM METAL FRAMING. REFER TO STRUCTURAL DRAWINGS.
- (35) BRICK MASONRY ROW LOCK COURSE.
- (36) THROUGH PREFINISHED METAL WALL FLASHING. CONTINUE MIN. 8" BEHIND METAL PANEL. PROVIDE HEMMED EDGE. SPLT METAL PANEL TO ALLOW FLASHING THROUGH.
- (37) 5/8" TREATED PLYWOOD.

NOTE:
REFER TO STRUCTURAL DRAWINGS FOR FOOTINGS, FOUNDATIONS, SLABS AND REINFORCEMENT.

- (38) PRE-ENGINEERED METAL BUILDING SHEET METAL (24 GA.) CONDUCTOR HEAD AND DOWNSPOUT SYSTEM. REFER TO EXTERIOR ELEVATIONS FOR LOCATIONS. PROVIDE WALL MOUNTING BRACKETS AT 8'-0" O.C. MAXIMUM. CONTRACTOR TO PROVIDE CONCRETE SPLASH BLOCKS UNLESS OTHERWISE INDICATED.
- (39) (NOT USED)
- (40) (NOT USED)



ARCHITECT OF RECORD
ADAM KREHER
ARCHITECT LICENSE NUMBER
AR89768
SHEETS BEARING THIS SEAL ARE AUTHENTICATED. RESPONSIBILITY FOR ALL OTHER PLANS, SPECIFICATIONS OR INSTRUMENTS ARE DISCLAIMED.

torgerson DESIGN partners
116 N. 2ND AVENUE
OZARK, MO 65721
P (417) 581-8889
F (417) 581-9002

PROJECT:
NEW O'REILLY AUTO PARTS STORE
1411 LAKE TRAFFORD RD
IMMOKALEE, FL 34142

O'Reilly AUTO PARTS
CORPORATE OFFICES
933 SOUTH PATTERSON
SPRINGFIELD, MISSOURI 65802
(417) 882-2674 TELEPHONE

DRAWN BY: **SM** CHECKED BY: **KR**
DATE: **11/29/2019**
REVISION:
ADD001
APRIL 17, 2020
PROJECT NUMBER:
19241-IMM

SHEET NUMBER
A3.3