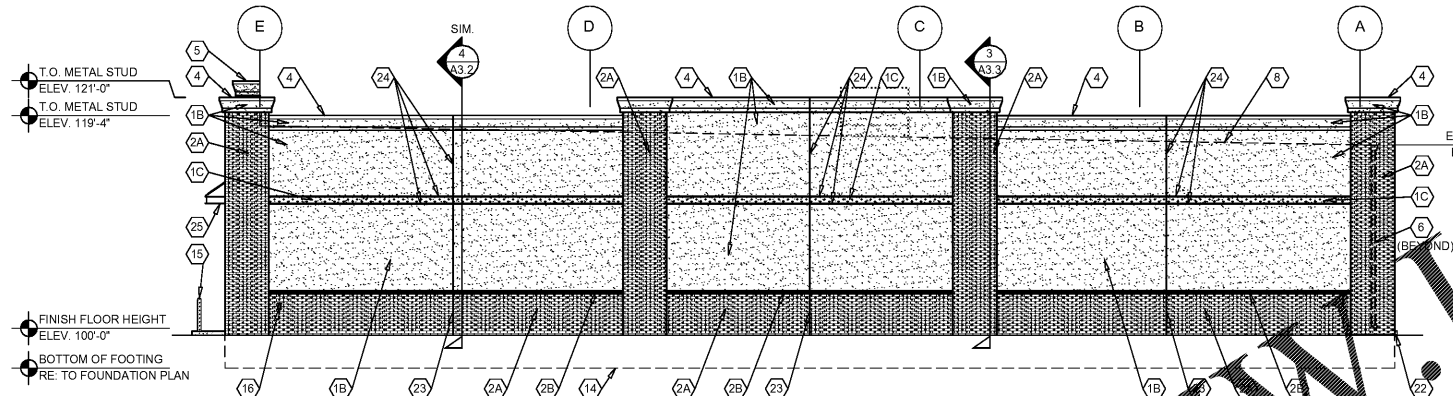


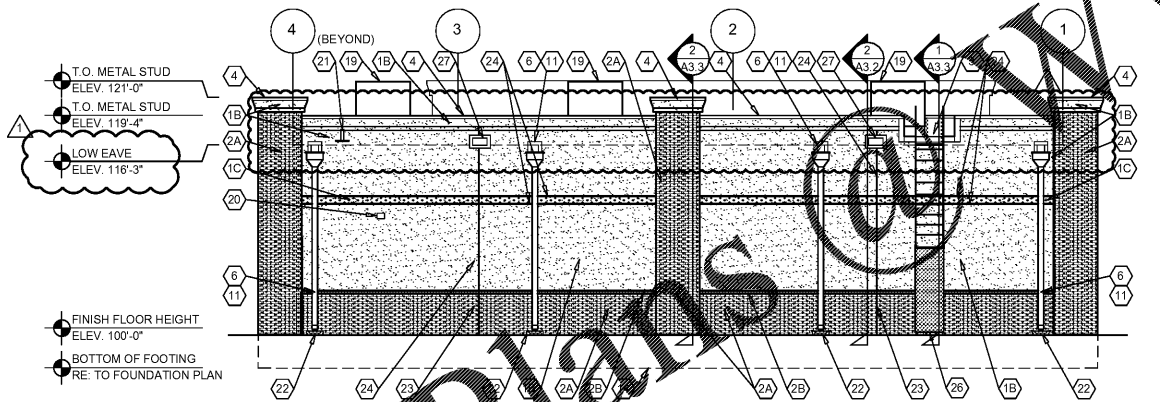
**1 FRONT EXTERIOR ELEVATION**

A2.1 SCALE: 1/8" = 1'-0"



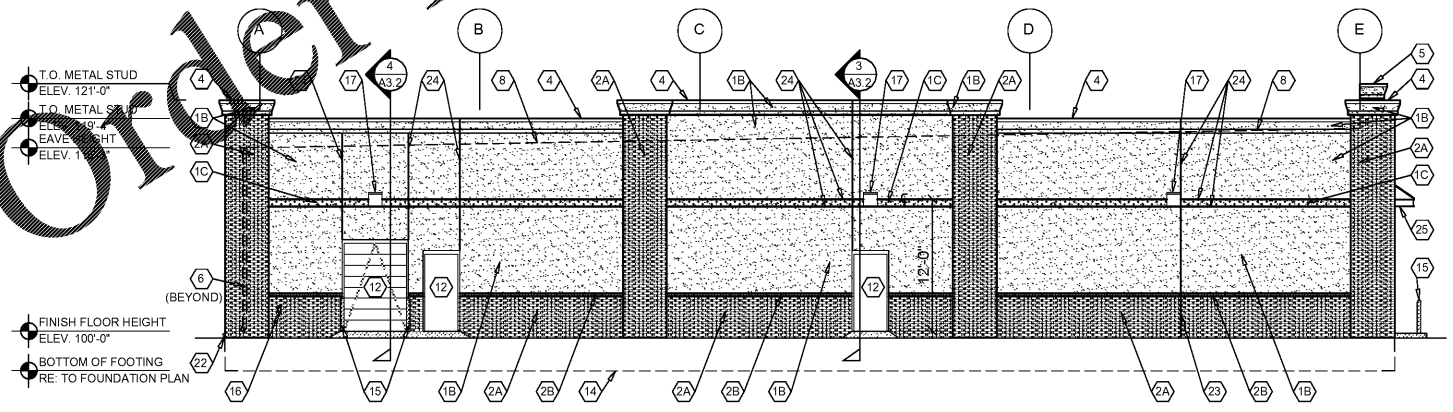
**2 RIGHT EXTERIOR ELEVATION**

A2.1 SCALE: 1/8" = 1'-0"



**3 REAR EXTERIOR ELEVATION**

A2.1 SCALE: 1/8" = 1'-0"



**4 LEFT EXTERIOR ELEVATION**

A2.1 SCALE: 1/8" = 1'-0"

**EXTERIOR FINISH SCHEDULE**

**EXTERIOR INSULATION AND FINISH SYSTEM (EIFS)**  
**KEY NOTE NO. 1A:**  
 MFG. DRYVIT SPECIFIED. EQUAL BY STO OR BASF (NO SUBSTITUTES)  
 SERIES: OUTSULATION PLUS MD  
 TEXTURE: SANDBLAST  
 COLOR: DRYVIT 348 "PATCHWOOD" STRATOTONE HIGH PERFORMANCE  
 COLOR STANDARD: SHERWIN WILLIAMS "SOFTER TAN" SW6141

**KEY NOTE NO. 1B:**  
 MFG. DRYVIT SPECIFIED. EQUAL BY STO OR BASF (NO SUBSTITUTES)  
 SERIES: OUTSULATION PLUS MD  
 TEXTURE: SANDBLAST  
 COLOR: DRYVIT STRATOTONE HIGH PERFORMANCE  
 COLOR STANDARD: SHERWIN WILLIAMS "LATTE" SW6108 (SHER-CRYL) GLOSS

**KEY NOTE NO. 1C:**  
 MFG. DRYVIT SPECIFIED. EQUAL BY STO OR BASF (NO SUBSTITUTES)  
 SERIES: OUTSULATION PLUS MD  
 TEXTURE: SANDBLAST  
 COLOR: DRYVIT STRATOTONE HIGH PERFORMANCE  
 COLOR STANDARD: SHERWIN WILLIAMS "LATTE" SW6108 (SHER-CRYL) GLOSS

**UNIT MASONRY**  
**KEY NOTE NO. 2A:**  
 TYPE: CLAY MASONRY UNIT  
 MFG: ACME BRICK  
 SIZE: 2 1/4" X 3 5/8" X 7 5/8" (MODULAR)  
 COURSING: RUNNING BOND  
 COLOR: (ACCENT COLOR) BLEND 30 DOVE GRAY VYR  
 MORTAR COLOR: NATURAL GRAY

**KEY NOTE NO. 2B:**  
 TYPE: CLAY MASONRY UNIT  
 MFG: ACME BRICK  
 SIZE: 2 1/4" X 3 5/8" X 7 5/8" (MODULAR)  
 COURSING: LOW LOCK  
 COLOR: (FIELD COLOR) BLEND 600 OXFORD BROWN VELOUR  
 MORTAR COLOR: NATURAL GRAY

**FLASHING AND SHEET METAL**  
**KEY NOTE NO. 3:**  
 TYPE: STANDING SEAM ROOFING SYSTEM  
 MFG: (REFER TO PRE-ENGINEERED METAL BUILDING SHOP DRAWINGS)  
 COLOR: POLAR WHITE

**KEY NOTE NO. 4:**  
 TYPE: FLASHING AT MASONRY  
 MFG: (REFER TO PRE-ENGINEERED METAL BUILDING SHOP DRAWINGS)  
 FINISH: PREFINISHED  
 COLOR: EQUAL TO BUTLER BUILDING "COOL BIRCH WHITE"

**KEY NOTE NO. 5:**  
 (NOT USED)

**KEY NOTE NO. 6:**  
 TYPE: PRE-ENGINEERED METAL BUILDING CONDUCTOR HEAD & DOWNSPOUTS  
 MFG: (OWNER FURNISHED / CONTRACTOR INSTALLED)  
 FINISH: FACTORY PRIME & FIELD PAINTED  
 COLOR: SHERWIN WILLIAMS (MATCH ADJACENT MASONRY FIELD COLOR) (SEMI-GLOSS)

**DOORS AND WINDOWS**  
**KEY NOTE NO. 7:**  
 TYPE: STEEL DOORS AND FRAMES (DOORS NO. 2 AND 7)  
 MFG: (OWNER FURNISHED / CONTRACTOR INSTALLED)  
 FINISH: FACTORY PRIMED AND FIELD PAINTED  
 COLOR: SHERWIN WILLIAMS (MATCH ADJACENT MASONRY COLOR) (SEMI-GLOSS)

**KEY NOTE NO. 12:**  
 TYPE: STEEL DOORS AND FRAMES (DOORS NO. 3)  
 MFG: (REFER PROJECT MANUAL)  
 FINISH: FACTORY PRIMED AND FIELD PAINTED  
 COLOR: SHERWIN WILLIAMS (MATCH ADJACENT MASONRY COLOR) (SEMI-GLOSS)

**KEY NOTE NO. 13:**  
 TYPE: (REFER TO WINDOW SCHEDULE)  
 MFG: EFCCO, KAWNEER, OR OLD CASTLE (VISTA WALL) (NO SUBSTITUTES)  
 COLOR: EFCCO "VY"; KAWNEER "DARK IVY"; VISTA WALL "INTERSTATE GREEN"

**PAINTING**  
**KEY NOTE NO. 15:**  
 TYPE: STEEL BOLLARDS (REFER TO CIVIL DRAWINGS)  
 FINISH: FIELD PRIMED AND PAINTED  
 COLOR: SHERWIN WILLIAMS "HUNT CLUB" SW6468 (SEMI-GLOSS)

**KEY NOTE NO. 25:**  
 TYPE: PREFABRICATED PROTECTIVE COVER SYSTEM  
 FINISH: PRIME & FIELD PAINT  
 COLOR: SHERWIN WILLIAMS "HUNT CLUB" SW6468 (SEMI-GLOSS)

**KEY NOTE NO. 26:**  
 TYPE: ROOF ACCESS LADDER  
 MFG: (REFER PROJECT MANUAL)  
 FINISH: FACTORY PRIMED AND FIELD PAINTED  
 COLOR: SHERWIN WILLIAMS (MATCH ADJACENT MASONRY COLOR) (SEMI-GLOSS)

**GENERAL NOTES**

- A REFER TO PROJECT MANUAL FOR ADDITIONAL REQUIREMENTS.
- B REFER TO CIVIL DRAWINGS FOR ADDITIONAL REQUIREMENTS.
- C REFER TO PLUMBING, MECHANICAL, AND ELECTRICAL DRAWINGS FOR SYSTEM TYPES AND ADDITIONAL REQUIREMENTS.
- D REFER TO EXTERIOR FINISH SCHEDULE FOR MATERIAL TYPES.
- E REFER TO PRE-ENGINEERED METAL BUILDING SHOP DRAWINGS FOR ADDITIONAL REQUIREMENTS.
- F REFER TO SCOPE OF WORK SCHEDULE FOR ADDITIONAL REQUIREMENTS.

**KEY NOTES**

- 1A EXTERIOR INSULATION AND FINISH SYSTEM (EIFS).
- 1B EXTERIOR INSULATION AND FINISH SYSTEM (EIFS).
- 1C EXTERIOR INSULATION AND FINISH SYSTEM (EIFS).
- 2A CLAY MASONRY UNIT EXTERIOR WALL CONSTRUCTION (ACCENT COLOR). REFER TO PLANS, SECTIONS, AND DETAILS FOR ADDITIONAL REQUIREMENTS.
- 2B CLAY MASONRY UNIT EXTERIOR WALL CONSTRUCTION (FIELD COLOR). REFER TO PLANS, SECTIONS, AND DETAILS FOR ADDITIONAL REQUIREMENTS.
- 3 PRE-ENGINEERED METAL BUILDING SHEET METAL ROOFING SYSTEM.
- 4 PRE-ENGINEERED METAL BUILDING SHEET METAL FLASHING (FIELD BENT) (AT EIFS 1B)
- 5 (NOT USED)
- 6 PRE-ENGINEERED METAL BUILDING SHEET METAL CONDUCTOR HEAD & DOWNSPOUT SYSTEM.
- 7 (NOT USED)
- 8 LINE OF ROOF BEYOND WITH 1/4":12" SLOPE MINIMUM.
- 9 SURFACE MOUNTED SIGN OWNER FURNISHED AND INSTALLED. PROVIDE BACKING FOR MOUNTING AND ROUGH-IN ELECTRICAL COORDINATE REQUIREMENTS WITH OWNER. REFER TO SHEET SG2.1.
- 10 BUILDING ADDRESS NUMBERS IN 6" HIGH HELVETICA WHITE VINYL ADHERED TO EXTERIOR FACE OF GLAZING.
- 11 PRE-ENGINEERED METAL BUILDING THRU WALL SCUPPER SYSTEM.
- 12 EXTERIOR DOOR AND FRAME SYSTEM. REFER TO FLOOR PLAN AND DOOR SCHEDULE FOR TYPES.
- 13 EXTERIOR WINDOW SYSTEM. REFER TO FLOOR PLAN AND WINDOW SCHEDULE FOR TYPES.
- 14 APPROXIMATE LINE OF FOUNDATION. REFER TO STRUCTURAL DRAWINGS.
- 15 STEEL BOLLARDS. REFER TO CIVIL AND STRUCTURAL DRAWINGS.
- 16 HOSE BIB. REFER TO PLUMBING DRAWINGS.
- 17 LIGHT FIXTURE. REFER TO ELECTRICAL DRAWINGS.
- 18 (NOT USED)
- 19 MECHANICAL ROOF TOP UNIT. REFER TO MECHANICAL DRAWINGS.
- 20 MECHANICAL WALL PENETRATIONS. REFER TO MECHANICAL DRAWINGS. PROVIDE FRAMING, FLASHING, AND SEALANT AS REQUIRED. INSTALL RESTROOM EXHAUST FANS 12" MINIMUM ABOVE INTERIOR CEILING FRAMING.
- 21 PLUMBING ROOF VENT. REFER TO PLUMBING DRAWINGS AND DETAIL 11/A4.2.
- 22 CONCRETE SPLASH BLOCK. INSTALL AT EACH DOWNSPOUT.
- 23 MASONRY CONTROL JOINT. PROVIDE SEALANT OVER 1/2" DIAMETER FOAM BACKER ROD. COLOR TO MATCH ADJACENT MASONRY.
- 24 RUSTICATION JOINT. REFER TO DETAIL 6/A3.2.
- 25 PREFABRICATED PROTECTIVE COVER SYSTEM WITH 1" DIA. TENSION RODS, ADJUSTABLE CLEAVISES, AND PLATE FABRICATED CONNECTIONS INSTALLED PER MANUFACTURER'S RECOMMENDATIONS (SUBMIT SHOP DRAWINGS). REFER TO EXTERIOR ELEVATIONS FOR LOCATIONS OF TENSION RODS AND COORDINATION WITH SIGNS. REFER TO STRUCTURAL DRAWINGS FOR ADDITIONAL REQUIREMENTS.
- 26 PRE-FABRICATED ALUMINUM ROOF ACCESS LADDER SYSTEM (PAINT). PROVIDE SECURITY PANEL WITH SIDE GUARDS. LADDER TO COMPLY WITH "OSHA" AND "ANSI" REQUIREMENTS. ALL CONNECTIONS TO BE FACTORY WELDED AND FIELD ANCHORED TO WALL AND CONCRETE SLAB CONSTRUCTION PER MANUFACTURER'S RECOMMENDATIONS. TREADS 12" O.C. MAX. WITH 300 LBS MINIMUM DESIGN LOAD. LADDER TO BE 1'-6" MINIMUM CLEAR WIDTH BETWEEN VERTICAL SIDE RAILS. PROVIDE 7" MINIMUM CLEARANCE BETWEEN INSIDE FACE OF LADDER AND EXTERIOR WALL ASSEMBLY. SUBMIT SHOP DRAWINGS FOR REVIEW AND APPROVAL.

27 SECONDARY THROUGH WALL SHEET METAL SCUPPER



ARCHITECT OF RECORD  
**ADAM KREHER**  
 ARCHITECT LICENSE NUMBER  
 AR98768  
 SHEETS BEARING THIS SEAL ARE AUTHENTICATED. RESPONSIBILITY FOR ALL OTHER PLANS, SPECIFICATIONS OR INSTRUMENTS ARE DISCLAIMED.

torgerson DESIGN partners  
 116 N. 2ND AVENUE  
 OZARK, MO 65721  
 P (417) 581-8889  
 F (417) 581-9002



PROJECT:  
**NEW O'REILLY AUTO PARTS STORE**  
 1411 LAKE TRAFFORD RD  
 IMMOKALEE, FL 34142

**O'Reilly AUTO PARTS**  
 CORPORATE OFFICES  
 833 SOUTH PATTERSON  
 SPRINGFIELD, MISSOURI 65802  
 (417) 882-2674 TELEPHONE

DRAWN BY: **SM** CHECKED BY: **KR**  
 DATE: **11/29/2019**  
 REVISION:  
 ADD001  
 APRIL 17, 2020  
 PROJECT NUMBER:  
**19241-IMM**  
 SHEET NUMBER

**A2.1**

© COPYRIGHT 2016 - I - DESIGNS, DRAWINGS AND SPECIFICATIONS ARE INSTRUMENTS OF SERVICE AND ARE THE PROPERTY OF THE DESIGN PROFESSIONAL. REPRODUCTION PROHIBITED WITHOUT THE EXPRESSED WRITTEN CONSENT OF THE DESIGN PROFESSIONAL.