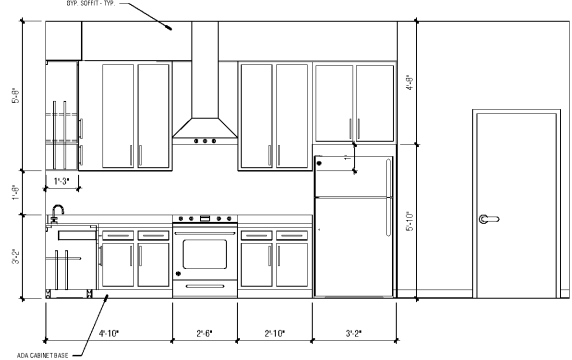
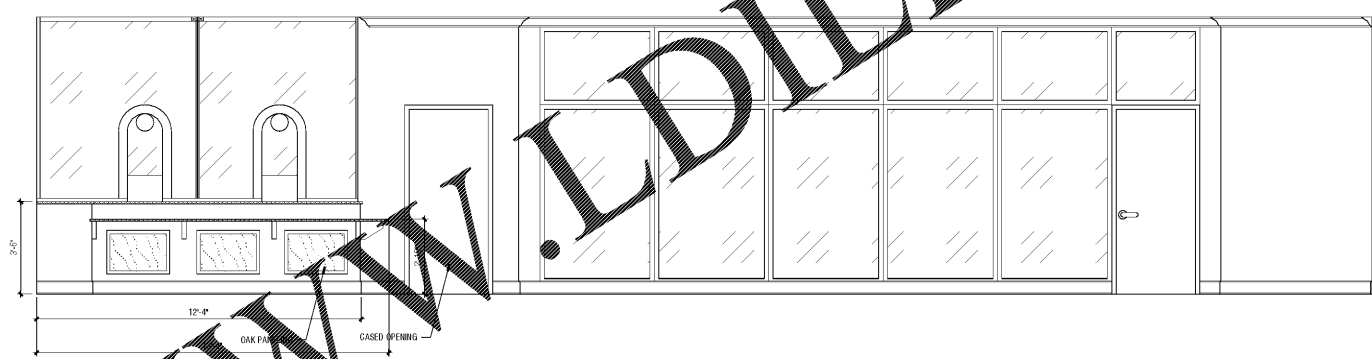
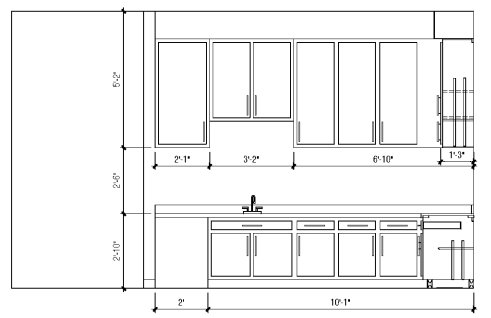


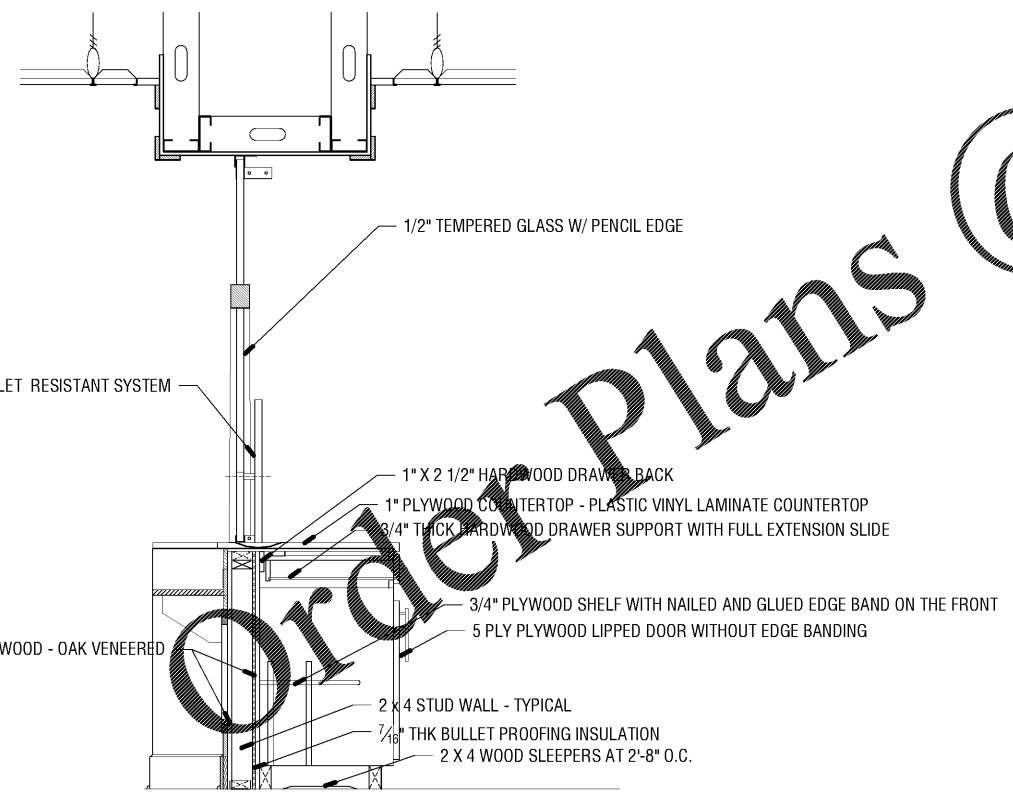
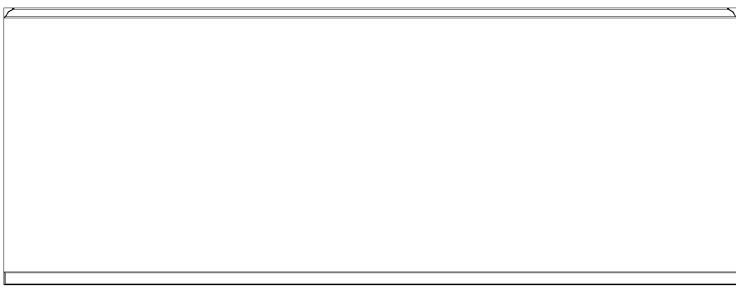
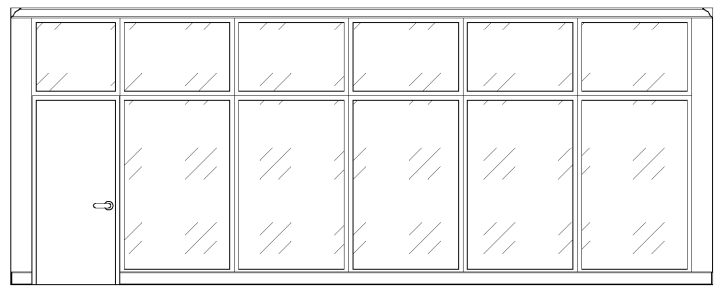
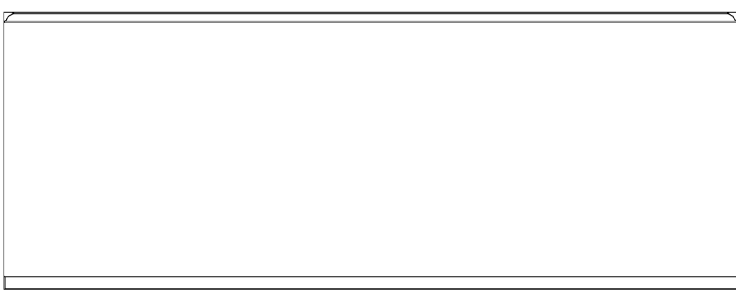
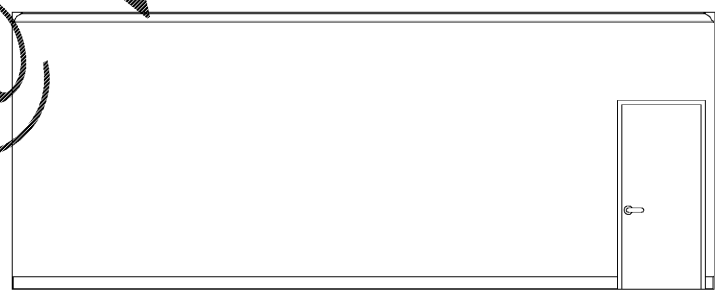
1 BREAKFAST ROOM 132
1" = 1'-0"



2 LOBBY 102
3/8" = 1'-0"



3 LARGE MEETING ROOM 103
3/8" = 1'-0"



4 RECEPTION COUNTER DETAIL
1" = 1'-0"

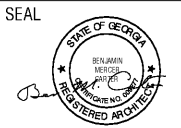
Order Plans @

WWW.LDILine.com

REVISIONS					
Number	Date	Remarks	Number	Date	Remarks
X	00-00-00	N/A			

CONSULTANTS		

CARTER WATKINS ASSOCIATES ARCHITECTS, INC.
 POST OFFICE BOX 1064
 137 EAST WASHINGTON STREET
 MONROE, GEORGIA 30655
 FAX: 770-267-1064
 email@carterwatkins.com www.carterwatkins.com



HOGANSVILLE CITY HALL

SHEET TITLE: INTERIOR ELEVATIONS (CONT.)
PRINTED:

NUMBER:
A-202

JUL 29 2019 11:25 AM C:\PROJECTS\Hogansville City Hall\Bldg\SeriesA-202\INTERIOR ELEVATIONS (CONT.)_A.dwg

DATE: 07/29/19 PRINTED: This Document is the property of Carter Watkins Associates. Reproduction of any kind is prohibited under Federal Copyright Laws.