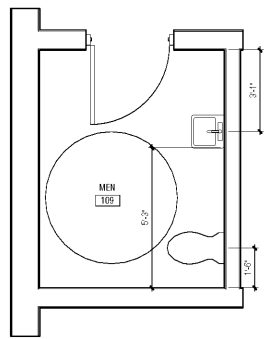
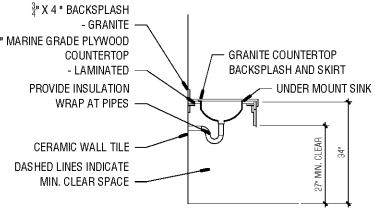
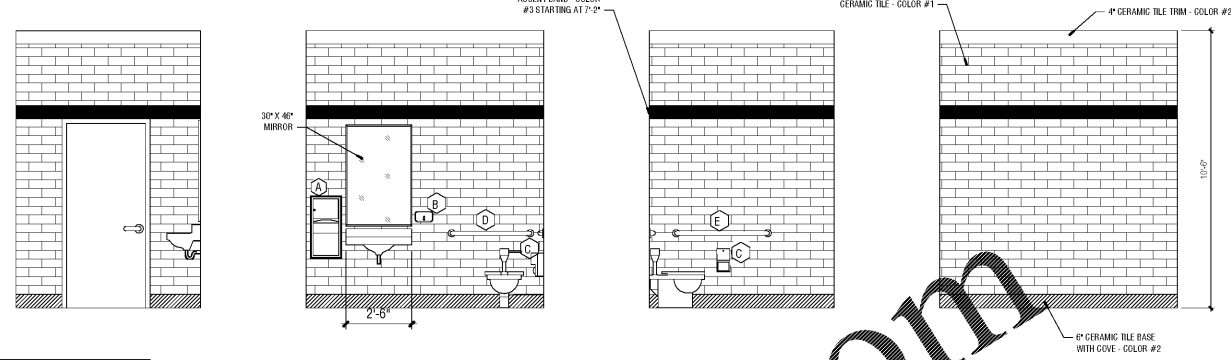


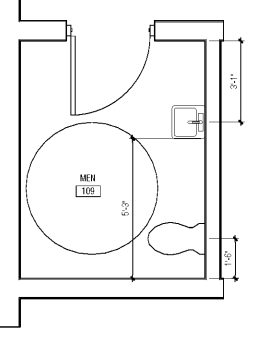
**5 CABINET SECTION**  
3/8" = 1'-0"



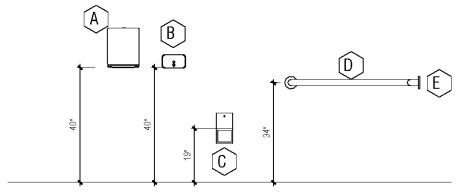
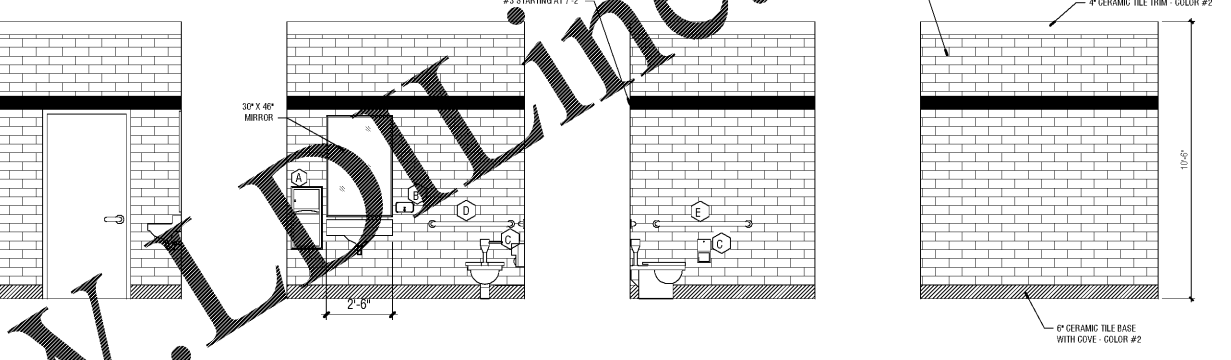
**1 RESTROOM 108**  
3/8" = 1'-0"



**6 WALL HUNG SINK DETAIL**  
1/2" = 1'-0"



**2 RESTROOM 109**  
3/8" = 1'-0"

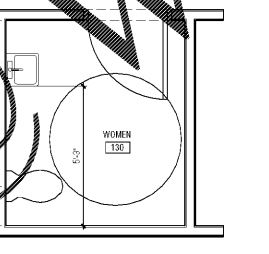


RESTROOM ACCESSORY NOTES:

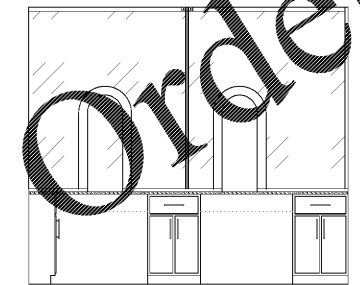
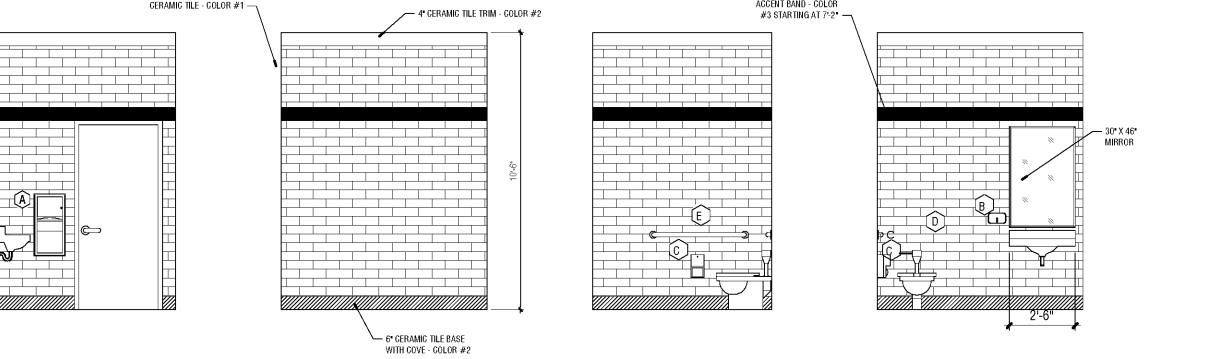
- ALL ACCESSORIES SHALL BE CHROME FINISH.
- COORDINATE LOCATION OF ACCESSORIES WITH NECESSARY BLOCKING, ELECTRICAL SWITCH AND WIRING LOCATIONS ETC. TO ENSURE PROPER CLEARANCES AND MOUNTING HEIGHTS. NOTIFY ARCHITECT OF ANY DISCREPANCIES BEFORE PROCEEDINGS.

Item	Description	Model No.	Notes
A	Surface Mt. Towel Dispenser	Bobrick # B-4250	40" TO DISPENSER
B	Soap Dispenser	Bobrick # B-2112	40" TO DISPENSER
C	Toilet Tissue Disp.	Bobrick # B-2888	39" TO DISPENSER
D	30" Handicap Grab Bar - Non-tilt grip	Bobrick # B-0600.99 X 30"	34"
E	42" Handicap Grab Bar - Non-tilt grip	Bobrick # B-0600.99 X 42"	34"

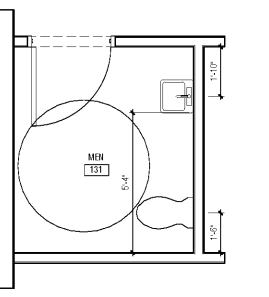
**7 RESTROOM ACCESSORIES**  
1/2" = 1'-0"



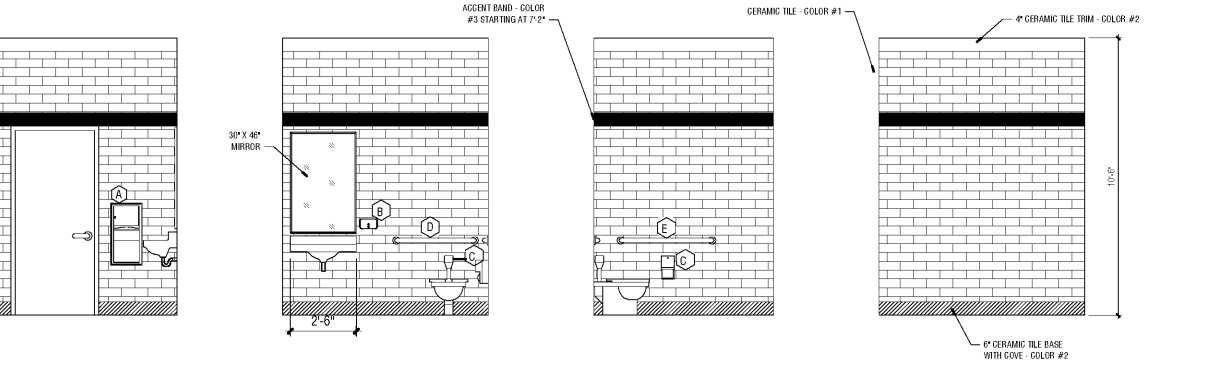
**3 RESTROOM 130**  
3/8" = 1'-0"



**8 \*\*\*\*\***



**4 RESTROOM 131**  
3/8" = 1'-0"

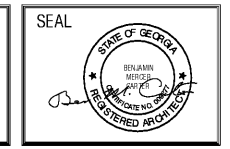


JUL 23 2015 11:59 AM CAD PROJECTS\Nogansville\_City\_Hall\Sheet\A-201\_INTERIOR ELEVATIONS.dwg

REVISIONS					
Number	Date	Remarks	Number	Date	Remarks
X	00-00-00	N/A			

CONSULTANTS

**CARTER WATKINS ASSOCIATES ARCHITECTS, INC.**  
 POST OFFICE BOX 1004  
 137 EAST WASHINGTON STREET  
 MONROE, GEORGIA 30655  
 Fax: 770.267.1064  
 email@carterwatkins.com www.carterwatkins.com



**HOGANSVILLE CITY HALL**

SHEET TITLE:  
INTERIOR ELEVATIONS  
PRINTED:

NUMBER:  
**A-201**

DATE: 07/29/19 PRINTED