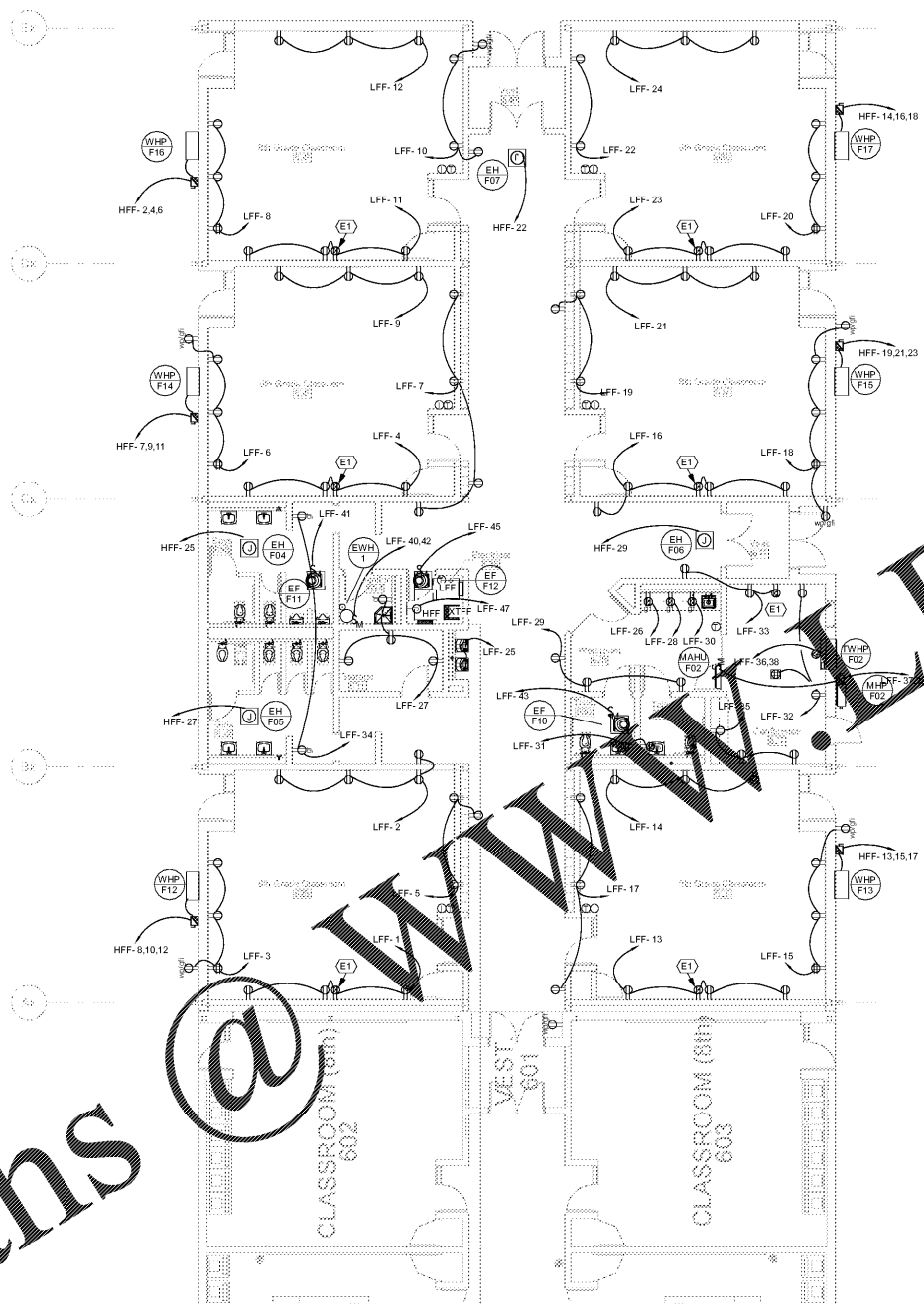


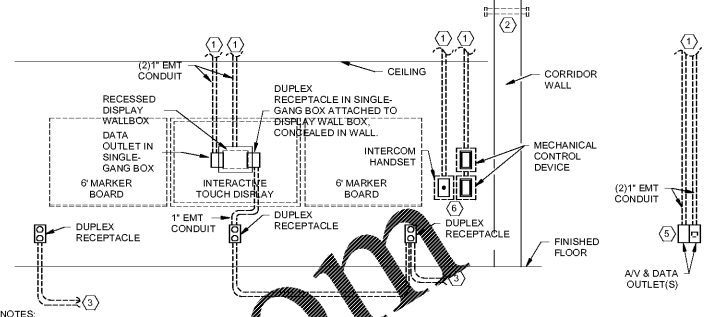
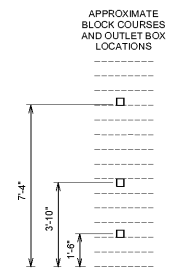
1 LEVEL 01 - LIGHTING PLAN - ADDITION
E102 1/8" = 1'-0"

#	KEYNOTE DESCRIPTION
L1	AS PART OF ALTERNATIVE PROVIDE 10V SLIDE DIMMERS IN LIEU OF SWITCHES WITH 0-10V WIRING TO RESPECTIVE FIXTURES.
L2	ROUTE EXTERNAL LIGHTING CIRCUIT THROUGH LIGHTING CONTACTOR IN ELEC R35.



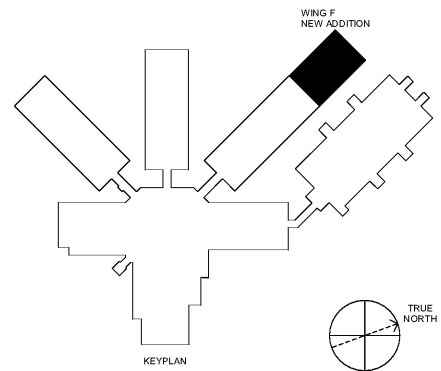
2 LEVEL 01 - POWER PLAN - ADDITION
E102 1/8" = 1'-0"

#	KEYNOTE DESCRIPTION
E1	DUPLEX RECEPTACLE AT THIS LOCATION SHALL BE INSTALLED IN RECESSED DISPLAY WALL BOX AT 67" AFF. U.O.N. REFER TO SPECIFICATION SECTION 28 05 33.



- NOTES:
1. STUB CONDUIT OUT OF WALL WITH 90 DEGREE BEND 6" ABOVE CEILING. LEAVE CONDUIT WITH PULL STRING AND BUSHED OPENING.
 2. PROVIDE (2) 2" & (1) 3/4" SLEEVES FOR DATA, FIRE ALARM, INTERCOM, MECHANICAL & OTHER COMMUNICATION CABLES. PROVIDE BUSHINGS ON END OF SLEEVES TO PROTECT CABLING. REFER TO SLEEVE THRU RATED WALL DETAIL FOR INSTALLATION REQUIREMENTS.
 3. CONDUIT TO OTHER DEVICES OR PANEL BOARD PER DRAWINGS.
 4. PROVIDE POLYMER PLENUM RATED 1/2" SUPPORT (COM DANGLE 'CD12', ARLINGTON 'THE LOOP' OR APPROVED EQUAL OR 3/4" METALLIC SUPPORT ATTACHED TO 12 GAUGE HANGER WIRES FOR SUPPORT OF CABLES. PROVIDE SUPPORT HANGING TO CORRIDOR WALL. PROVIDE SUPPORT OF CABLING AT MAX SPACING OF 5'-0" ON CENTER.
 5. PROVIDE 4-1/2" RECESS OUTLET AT THIS LOCATION WITH PULL STRING AND BUSHED OPENING.
 6. PROVIDE 6-1/2" RECESS OUTLET AT THIS LOCATION WITH PULL STRING AND BUSHED OPENING.
 7. INDICATE LOCATION, ORIENTATION AND COUNT OF OUTLET BOXES REQUIRED FOR MECH CONTROL DEVICES TO ROUGH-IN.

DETAIL TYPICAL CLASSROOM ELEVATION



SA&E PROJECT NUMBER	01-632-056
BID PACKAGE	BP-1
ISSUED FOR CONSTRUCTION	FEB. 4, 2020
Southern AE	
7951 Traxon Circle Austell, Ga 30168 (770) 519-7777 architects & engineers	
R #	Doc #
	Date

FACILITY CODE NUMBER: 672-0109
 (6) CLASSROOM ADDITION TO:
CREEKSIDE MIDDLE SCHOOL
 CATAULA, GEORGIA
HARRIS COUNTY BOARD OF EDUCATION
 HAMILTON, GEORGIA

ADDITION - LIGHTING & POWER PLAN

STATE OF GEORGIA REGISTERED PROFESSIONAL ARCHITECT No. 27557 J. CAMPO	STATE OF GEORGIA REGISTERED PROFESSIONAL ELECTRICAL ENGINEER No. 27557 J. CAMPO	DRAWING NUMBER
		E102