

**ELECTRIC WATER HEATER SCHEDULE**

NOTES:  
 1. REFER TO THE ELECTRICAL DRAWINGS FOR ELECTRICAL CHARACTERISTICS OF ALL ELECTRIC WATER HEATERS.  
 2. ALL WATER HEATERS SHALL BE PROVIDED WITH A THERMAL EXPANSION TANK. REFER TO THE THERMAL EXPANSION TANK SCHEDULE.

EW# NO.	MANUFACTURER	MODEL NO.	TANK VOLUME	ELEMENT WATTAGE	NO. OF ELEMENTS	ELEMENT OPERATION	APPARENT POWER	RECOVERY RATE	TEMP. RISE	OUTLET TEMP.	GENERAL DESCRIPTION
1	A.O. Smith	DEL-15	15 gal	3500.0 W	1	NON-SIMULTANEOUS	3500 VA	12.0	100 °F	140 °F	Light-Duty Commercial Electric Water Heater

**THERMAL EXPANSION TANK SCHEDULE**

MARK	MANUFACTURER	MODEL NO.	TANK VOLUME	ACCEPTANCE VOLUME	GENERAL DESCRIPTION	PRE-CHARGE COMMENTS	ASSOCIATED WATER HEATER
1	Flexcon	PH5	2.1 gal	0.9 gal	Diaphragm Type Thermal Expansion Tank	Charge Tank to Incoming Water System Pressure	EW#-1

**MINIMUM PLUMBING FIXTURE CONNECTION SCHEDULE**

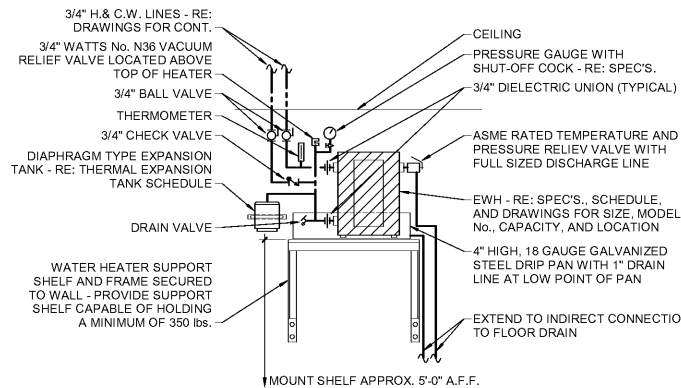
Mark	DESCRIPTION	MINIMUM ROUGH-IN SIZE		
		CW	HW	Waste
WC-1	STANDARD ADULT HEIGHT WATER CLOSET	1"	--	4"
WC-2	ADA ADULT HEIGHT WATER CLOSET	1"	--	4"
UR-1	STANDARD ADULT HEIGHT URINAL	3/4"	--	2"
UR-2	ADA ADULT HEIGHT URINAL	3/4"	--	2"
MS-1	MOP SINK	1/2"	1/2"	1 1/4"
LAV-1	ADA ADULT HEIGHT LAVATORY	1/2"	1/2"	1-1/4"
SCS-1	ADA ADULT HEIGHT SINGLE COMPARTMENT SINK	1/2"	1/2"	1 1/2"
EDF-1	STANDARD ADULT HEIGHT DRINKING FOUNTAIN	1/2"	--	1 1/4"
EDF-2	ADA ADULT HEIGHT DRINKING FOUNTAIN	1/2"	--	1 1/4"
WH-1	INTERIOR WALL HYDRANT	3/4"	--	--
WCO-1	WALL CLEANOUT	--	--	4"
FCO-1	FLOOR CLEANOUT - INTERIOR	--	--	4"
FCO-2	FLOOR CLEANOUT - EXTERIOR	--	--	4"
FD-1	FLOOR DRAIN	--	--	3"

**SHOCK ABSORBER SCHEDULE**

MARK	FIXTURE UNITS	MODEL #	MANUFACTURER
SA-1	1 - 11	1250-A	WILKINS
SA-2	12 - 32	1250-B	WILKINS
SA-3	33 - 60	1250-C	WILKINS
SA-4	61 - 113	1250-D	WILKINS
SA-5	114 - 154	1250-E	WILKINS
SA-6	155 - 330	1250-F	WILKINS

NOTES:  
 1. NOT ALL SHOCK ABSORBERS INDICATED ABOVE ARE NECESSARILY USED ON THE DRAWINGS.  
 2. REFER TO THE SPECIFICATIONS SECTION 221319 FOR ADDITIONAL REQUIREMENTS AND FOR THE LIST OF ACCEPTABLE MANUFACTURERS FOR USE.  
 3. WHEN SHOCK ABSORBERS ARE NOT USED, THE CONTRACTOR SHALL INSTALL VERTICAL AIR CHAMBERS 18" HIGH AND ONE PIPE SIZE LARGER THAN THE FIXTURE SUPPLY PIPING AT EACH FIXTURE SUPPLY.  
 4. RAISE ALL SHOCK ABSORBERS TO ABOVE CEILING LEVEL FOR EASE OF MAINTENANCE.

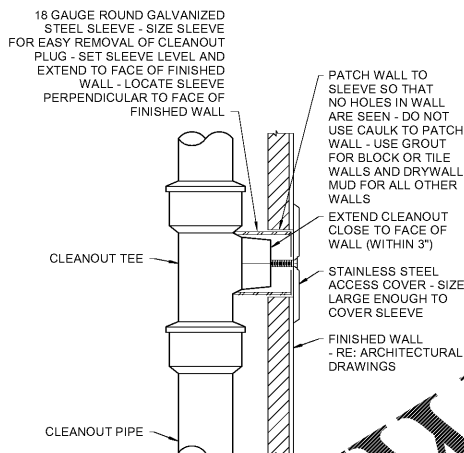
Order Plans



NOTES:  
 1. ALL PIPING SHALL BE SECURED TO MAKE RIGID.  
 2. ALL PIPING SHALL BE FULL SIZED TO POINT OF CONNECTION TO HEATER.  
 3. SUPPORT EXPANSION TANK TO WALL TO MAKE RIGID. SET AIR PRE-CHARGE PRESSURE AT WATER SUPPLY PRESSURE.

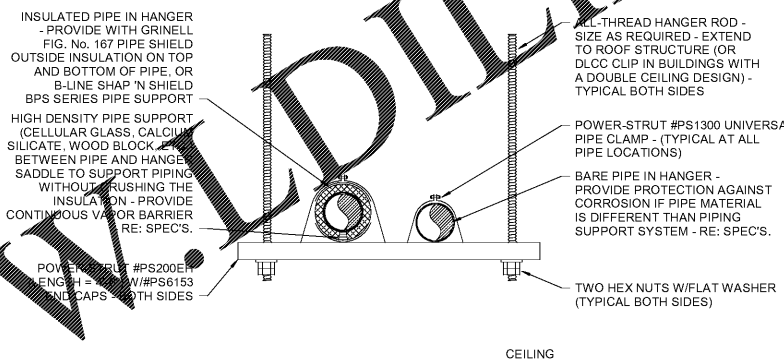
**1 WATER HEATER DETAIL**

P501 NTS



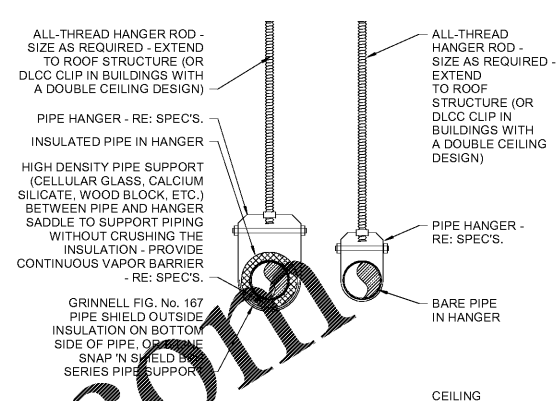
**3 WALL CLEANOUT DETAIL**

P501 NTS



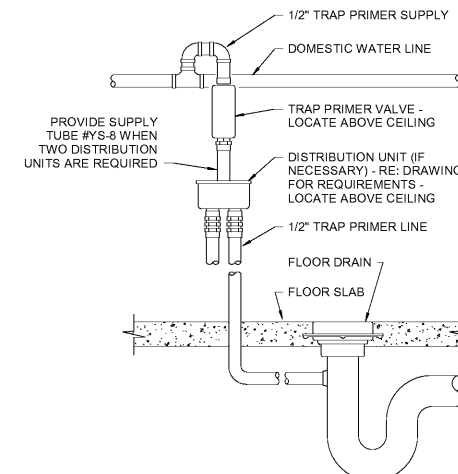
**4 PIPE HANGER DETAIL**

P501 NTS



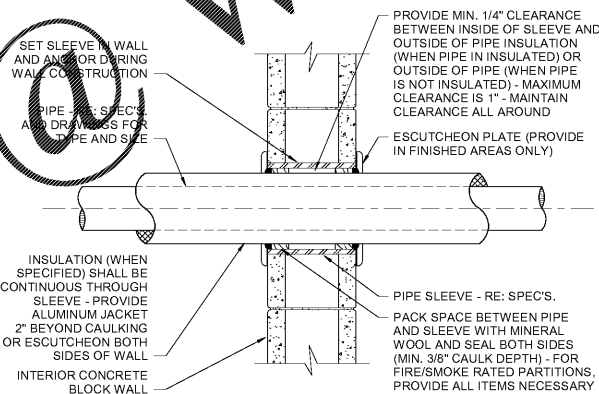
**2 PIPE HANGER DETAIL**

P501 NTS



**5 TRAP PRIMER VALVE DETAIL**

P501 NTS



NOTES:  
 1. INSTALLATION SHALL BE SAME FOR CONCRETE WALLS.  
 2. SLEEVES NOT REQUIRED FOR INTERIOR GYPSUM WALLS. ALL OTHER ITEMS (I.E. INSULATION W/JACKET THROUGH WALL, FIBERGLASS PACKING MATERIAL, SEALANT AT BOTH SIDES OF WALL, ESCUTCHEON PLATES, CLEARANCES, ETC.) ARE STILL REQUIRED TO BE INSTALLED.  
 3. PIPING INSULATION IN SLEEVES THROUGH FIRE/SMOKE RATED WALLS SHALL BE THE SPECIFIC INSULATION USED AND TESTED AS PART OF THE FIRE/SMOKE RATED PENETRATION ASSEMBLY.  
 4. PENETRATIONS THROUGH FIRE RATED WALLS/PARTITIONS SHALL BE A COMPLETE U.L. SYSTEM - REFER TO THE SPECIFICATIONS SECTION 07841 FOR THROUGH-PENETRATION FIRESTOP SYSTEMS.

**6 WALL PIPE SLEEVE DETAIL**

P501 NTS

SA&E PROJECT NUMBER	01-632-056
BID PACKAGE	BP-1
ISSUED FOR CONSTRUCTION	FEB. 4, 2020
<b>Southern AE</b>	
7951 Tricon Circle Austell, Ga 30168 (770) 819-7777	R # Doc # Date 1 AD#1 2/13/2020
architects & engineers	

FACILITY CODE NUMBER: 672-0109  
 (6) CLASSROOM ADDITION TO:  
**CREEKSIDE MIDDLE SCHOOL**  
 CATAULA, GEORGIA  
**HARRIS COUNTY BOARD OF EDUCATION**  
 HAMILTON, GEORGIA

**PLUMBING DETAILS AND SCHEDULES**

DRAWING NUMBER  
**P501**