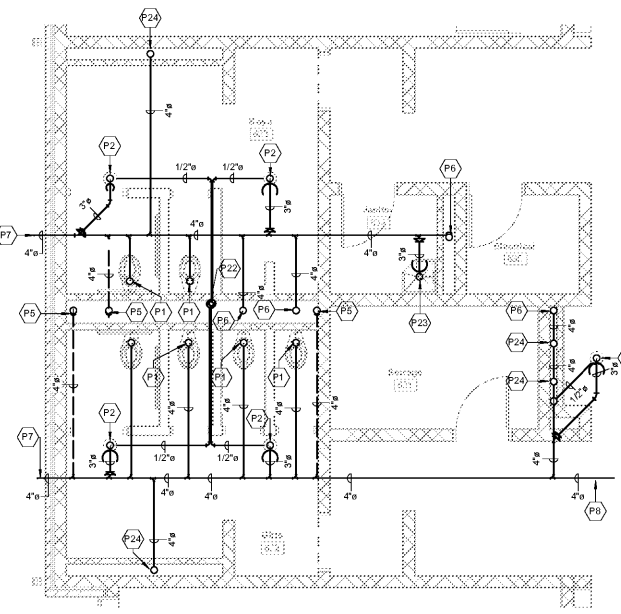
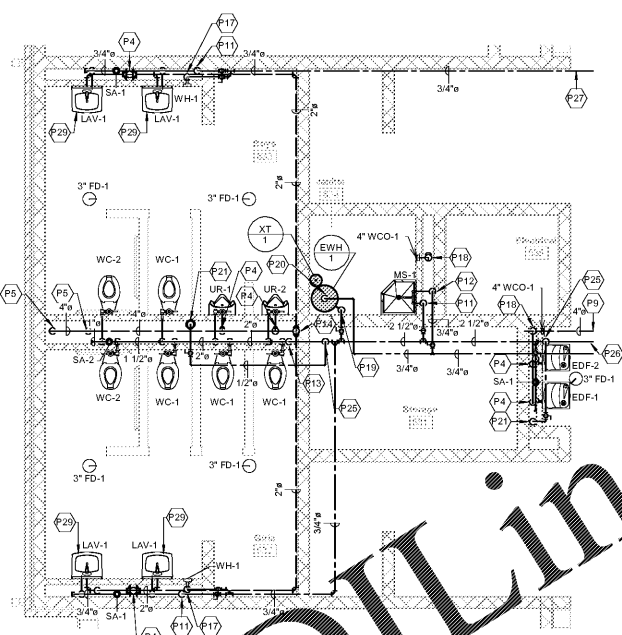


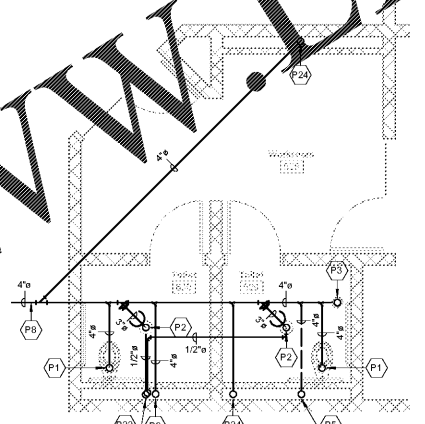
1 LEVEL 01 - PLUMBING FLOOR PLAN  
P101 1/8" = 1'-0"



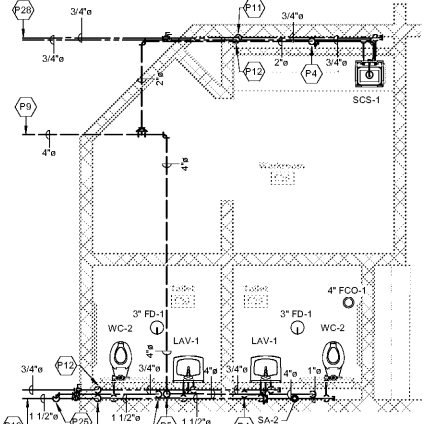
2 LEVEL 01 - ENLARGED PLUMBING BELOW FLOOR PLAN - BATHROOMS  
P101 1/4" = 1'-0"



3 LEVEL 01 - ENLARGED PLUMBING ABOVE FLOOR PLAN - BATHROOMS  
P101 1/4" = 1'-0"

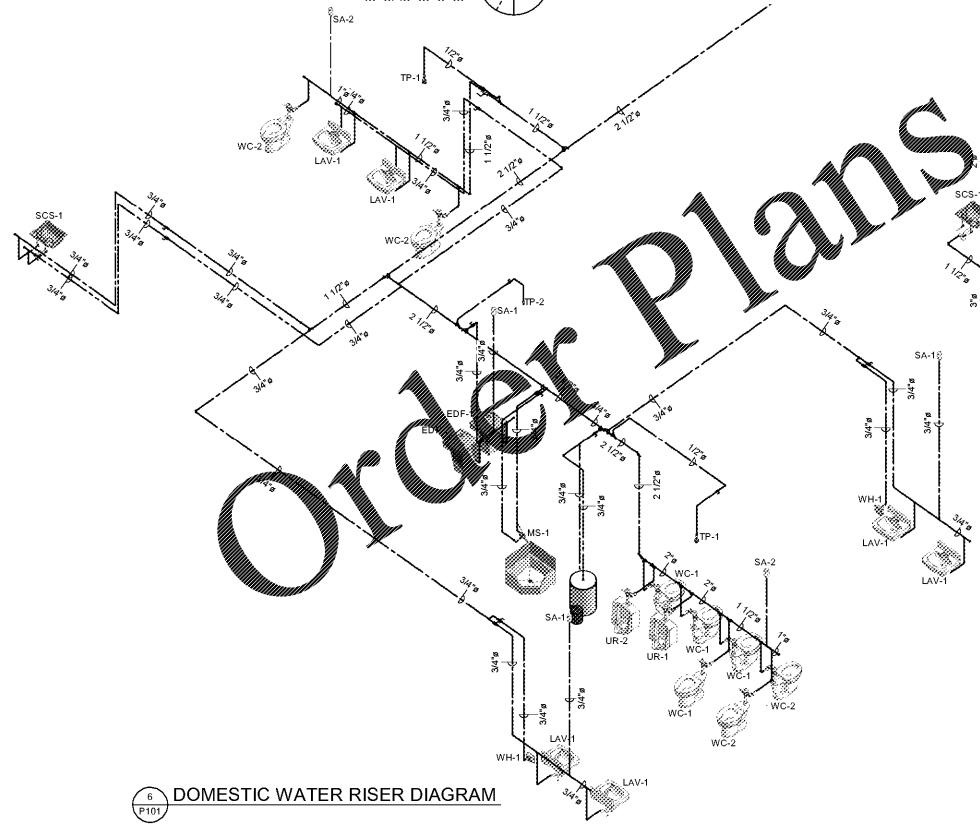


4 LEVEL 01 - PLUMBING BELOW FLOOR PLAN - WORKROOM  
P101 1/4" = 1'-0"

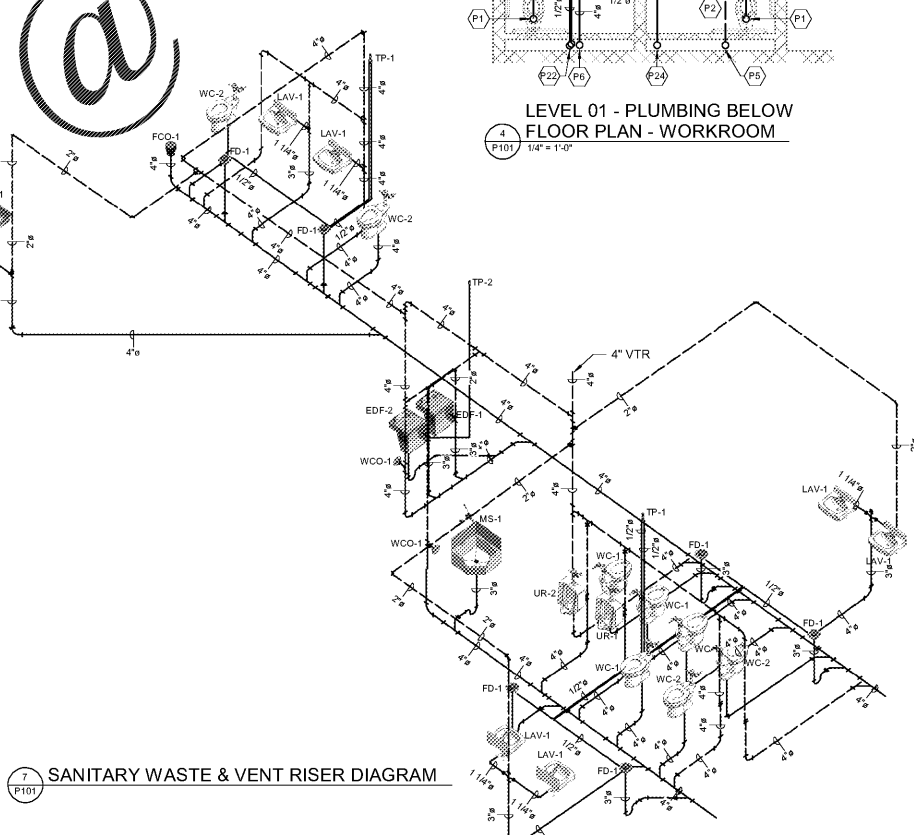


5 LEVEL 01 - PLUMBING ABOVE FLOOR PLAN - WORKROOM  
P101 1/4" = 1'-0"

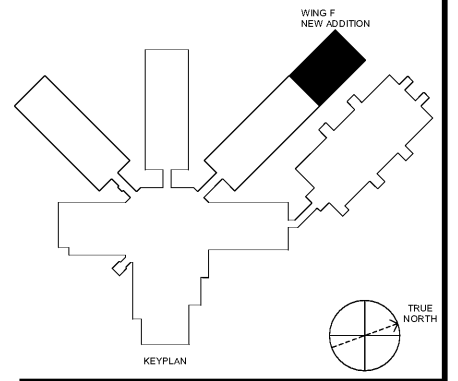
#	KEYNOTE DESCRIPTION
P1	4" SANITARY WASTE LINE DOWN FROM WATER CLOSET.
P2	3" SANITARY WASTE LINE DOWN FROM FLOOR DRAIN.
P3	4" SANITARY WASTE LINE DOWN FROM FLOOR CLEANOUT.
P4	3" SANITARY WASTE LINE DOWN AND 2" VENT LINE UP.
P5	4" VENT LINE UP.
P6	4" SANITARY WASTE LINE DOWN.
P7	4" SANITARY WASTE LINE - RE: 1P101 FOR CONTINUATION.
P8	4" SANITARY WASTE LINE - RE: 1P101 FOR CONTINUATION.
P9	4" VENT LINE - RE: 1P101 FOR CONTINUATION.
P10	CONNECT NEW 2 1/2" COLD WATER LINE TO EXISTING 3" COLD WATER LINE ABOVE CEILING. PROVIDE SHUT-OFF VALVE ON NEW LINE JUST AFTER CONNECTION POINT. CONTRACTOR TO VERIFY LOCATION AND SIZE OF EXISTING.
P11	3/4" COLD WATER LINE DOWN.
P12	3/4" HOT WATER LINE DOWN.
P13	2 1/2" COLD WATER LINE DOWN.
P14	4" VENT THROUGH ROOF.
P15	1 1/2" COLD WATER LINE DOWN.
P16	3/4" HOT WATER LINE AND 1 1/2" COLD WATER LINE - RE: 1P101 FOR CONTINUATION.
P17	3/4" COLD WATER LINE DOWN TO WATER HEATER INLET. LOCATE DRAIN SHUT-OFF VALVE IN ACCESSIBLE PLACE ABOVE CEILING.
P18	4" SANITARY WASTE LINE DOWN AND 4" VENT LINE UP.
P19	3/4" COLD WATER LINE DOWN TO WATER HEATER INLET. REFER TO WATER HEATER DETAIL FOR CONNECTION.
P20	3/4" HOT WATER LINE DOWN TO WATER HEATER OUTLET. REFER TO WATER HEATER DETAIL FOR CONNECTION.
P21	CONNECT 1 1/2" COLD WATER LINE TO TRAP PRIMER DISTRIBUTION BOX INLET. PROVIDE SHUT-OFF VALVE FOR ACCESSIBLE LOCATION.
P22	1/2" TRAP PRIMER DOWN FROM DISTRIBUTION BOX TO FLOOR DRAIN CONNECTION.
P23	3" SANITARY WASTE LINE DOWN FROM MOP SINK.
P24	4" SANITARY WASTE LINE DOWN.
P25	COLD WATER LINE OFF TOP OF COLD WATER MAIN.
P26	COLD WATER LINE AND 3/4" HOT WATER LINE - RE: 1P101 FOR CONTINUATION.
P27	3/4" HOT WATER LINE - RE: 1P101 FOR CONTINUATION.
P28	3/4" HOT WATER LINE AND 3/4" COLD WATER LINE - RE: 1P101 FOR CONTINUATION.
P29	THIS LAVATORY TO HAVE COLD WATER ONLY. PIPE COLD WATER TO BOTH HOT AND COLD LAV CONNECTIONS.



6 DOMESTIC WATER RISER DIAGRAM  
P101



7 SANITARY WASTE & VENT RISER DIAGRAM  
P101



SA&E PROJECT NUMBER	01-632-056
BID PACKAGE	BP-1
ISSUED FOR CONSTRUCTION	FEB. 4, 2020
<b>Southern AE</b>	
7951 Traxon Circle Austell, Ga 30108 (770) 819-7777	REVISIONS R # Doc # Date 1 AD#1 2/13/2020
architects & engineers	
FACILITY CODE NUMBER: 672-0109	
(6) CLASSROOM ADDITION TO: <b>CREEKSIDE MIDDLE SCHOOL</b> CATAULA, GEORGIA	
<b>HARRIS COUNTY BOARD OF EDUCATION</b> HAMILTON, GEORGIA	
PLUMBING FLOOR PLAN	
STATE OF GEORGIA REGISTERED PROFESSIONAL ARCHITECT	DRAWING NUMBER <b>P101</b>