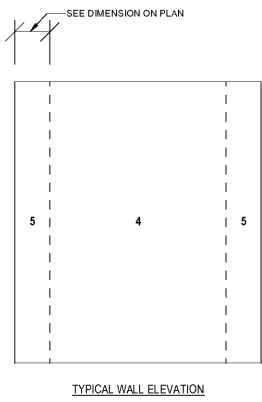
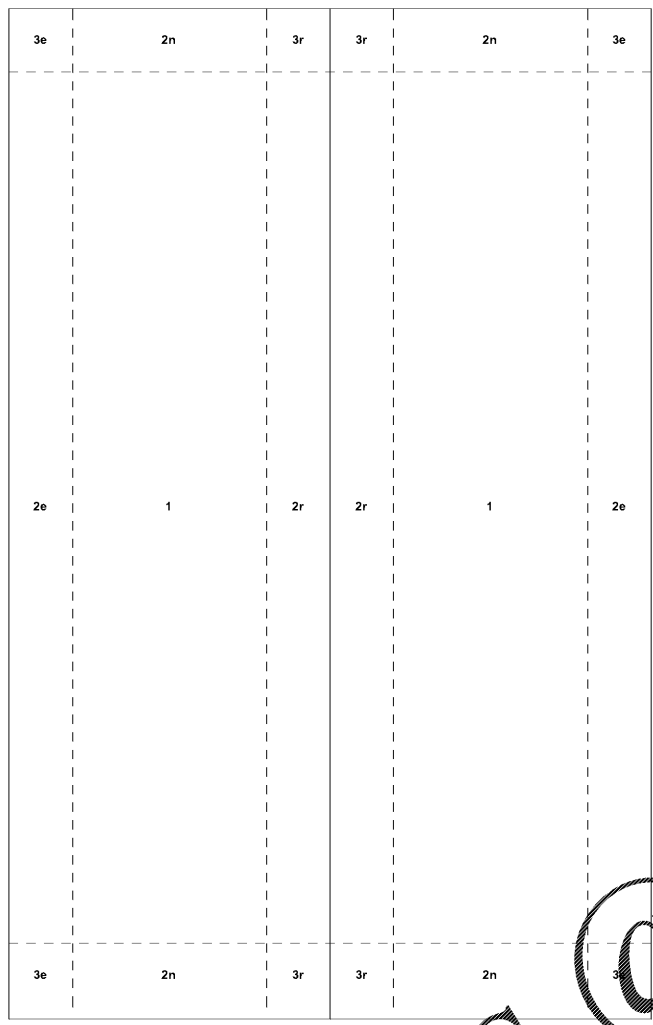


A
B
C
D
E
F
G
H
I
A
K
L
M
N

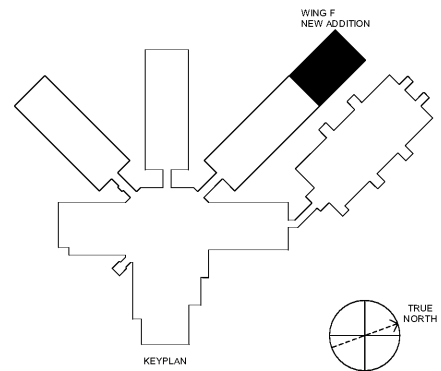


WIND DESIGN PRESSURES FOR COMPONENTS & CLADDING (PSF)			
ZONE	Effective Wind Area (ft ²)	Pos. Pres. (psf)	Neg. Pres. (psf)
1	2	+18	-44
1	20	+13 ^a	-44
1	50	+11 ^a	-27
1	100	+10 ^a	-14 ^a
2e	2	+18	-44
2e	20	+13 ^a	-44
2e	50	+11 ^a	-27
2e	100	+10 ^a	-14 ^a
2n	2	+18	-64
2n	10	+15 ^a	-64
2n	100	+10 ^a	-26
2n	250	+10 ^a	-26
2	2	+18	-64
2	10	+15 ^a	-64
2r	100	+10 ^a	-35
2r	250	+10 ^a	-24
3e	2	+18	-64
3e	10	+15 ^a	-64
3e	100	+10 ^a	-35
3e	250	+10 ^a	-24
3r	2	+18	-76
3r	10	+15 ^a	-76
3r	50	+11 ^a	-51
3r	100	+10 ^a	-40
4	10	+24	-26
4	50	+22	-24
4	200	+19	-21
4	500	+18	-20
5	10	+24	-32
5	50	+22	-27
5	200	+19	-23
5	500	+18	-20

^a Wind loads shown are strength level, multiply by 0.6 to obtain service level loads.
^b The final net design wind pressure, including all permitted reductions, used in the design shall not be less than 16psf acting in either direction.

1 COMPONENT CLADDING WIND PRESSURES
 S601 1/8" = 1'-0"

2 WIND PRESSURES FOR COMPONENTS & CLADDING
 S601 1/2" = 1'-0"



Order Plans @

WWW.LDILine.com

SA&E PROJECT NUMBER	01-632-056
BID PACKAGE	BP-1
ISSUED FOR CONSTRUCTION	FEB. 4, 2020
Southern AE 7951 Truon Circle Austell, Ga 30168 (770) 819-7777 architects & engineers	REVISIONS R # Doc # Date 1 AD.1 2-13-2020
	FACILITY CODE NUMBER: 672-0109 (6) CLASSROOM ADDITION TO: CREEKSIDE MIDDLE SCHOOL CATAULA, GEORGIA HARRIS COUNTY BOARD OF EDUCATION HAMILTON, GEORGIA
COMPONENTS & CLADDING WIND PRESSURES	
STATE OF GEORGIA REGISTERED ARCHITECT	DRAWING NUMBER S601