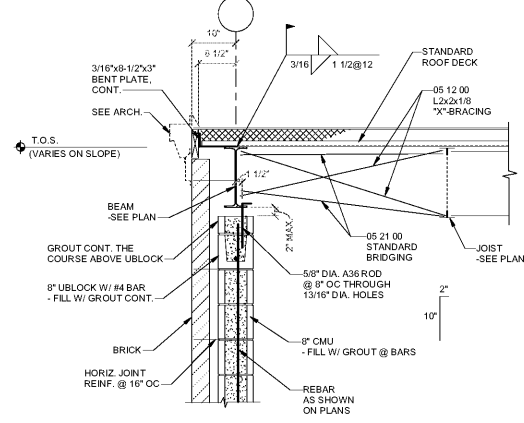
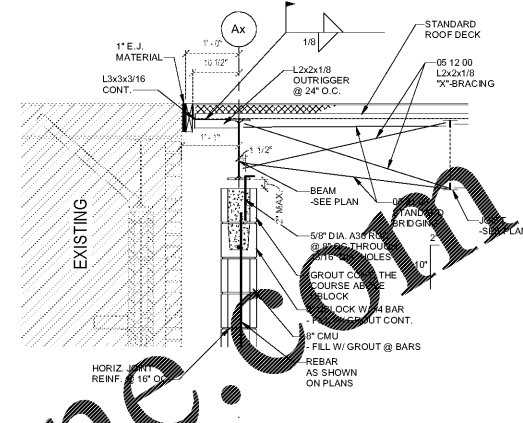


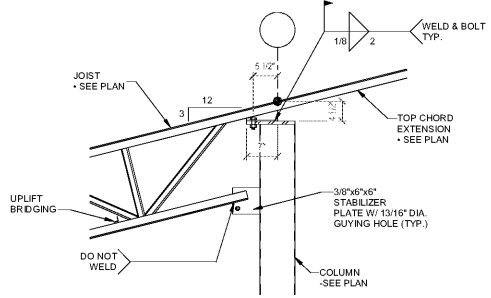
1 WALL SECTION EAVE  
S302 3/4" = 1'-0"



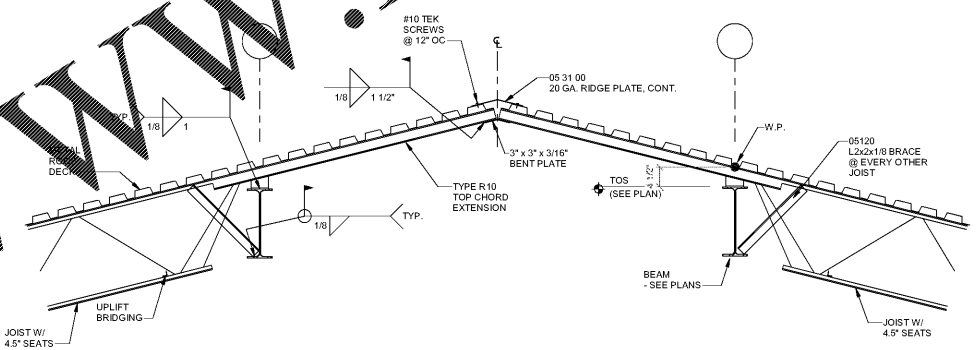
2 WALL SECTION RAKE  
S302 3/4" = 1'-0"



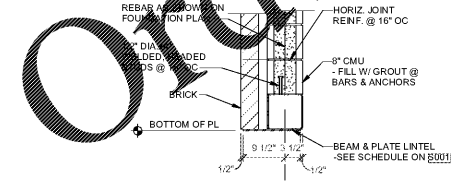
3 WALL SECTION RAKE @ EXISTING  
S302 3/4" = 1'-0"



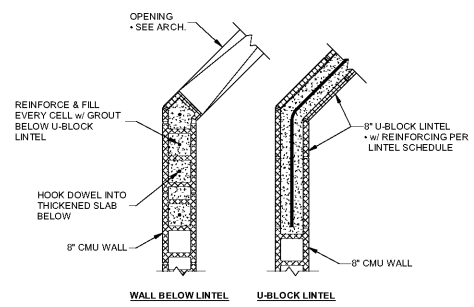
4 INTERIOR JOIST-COLUMN CONNECTION w/ TOP CHORD EXTENSION  
S302 3/4" = 1'-0"



5 RIDGE W/ JOISTS  
S302 3/4" = 1'-0"



6 LINTEL DETAIL  
S302 3/4" = 1'-0"



7 DIAGONAL WALL CORNER w/ U-BLOCK LINTEL  
S302 3/4" = 1'-0"

Order Plans @

WWW.LDILine.com

SA&E PROJECT NUMBER	01-632-056
BID PACKAGE	BP-1
ISSUED FOR CONSTRUCTION	FEB. 4, 2020
<b>Southern AE</b> 7951 Tricon Circle Austell, Ga 30168 (770) 819-7777 architects & engineers	REVISIONS
	R # Doc # Date
FACILITY CODE NUMBER: 672-0109	
(6) CLASSROOM ADDITION TO: <b>CREEKSIDE MIDDLE SCHOOL</b> CATAULA, GEORGIA	
<b>HARRIS COUNTY BOARD OF EDUCATION</b> HAMILTON, GEORGIA	
FRAMING DETAILS	
STATE OF GEORGIA REGISTERED ARCHITECT	DRAWING NUMBER
GEORGIA PROFESSIONAL ARCHITECTS LICENSE NO. 12388 STATE OF GEORGIA	S302