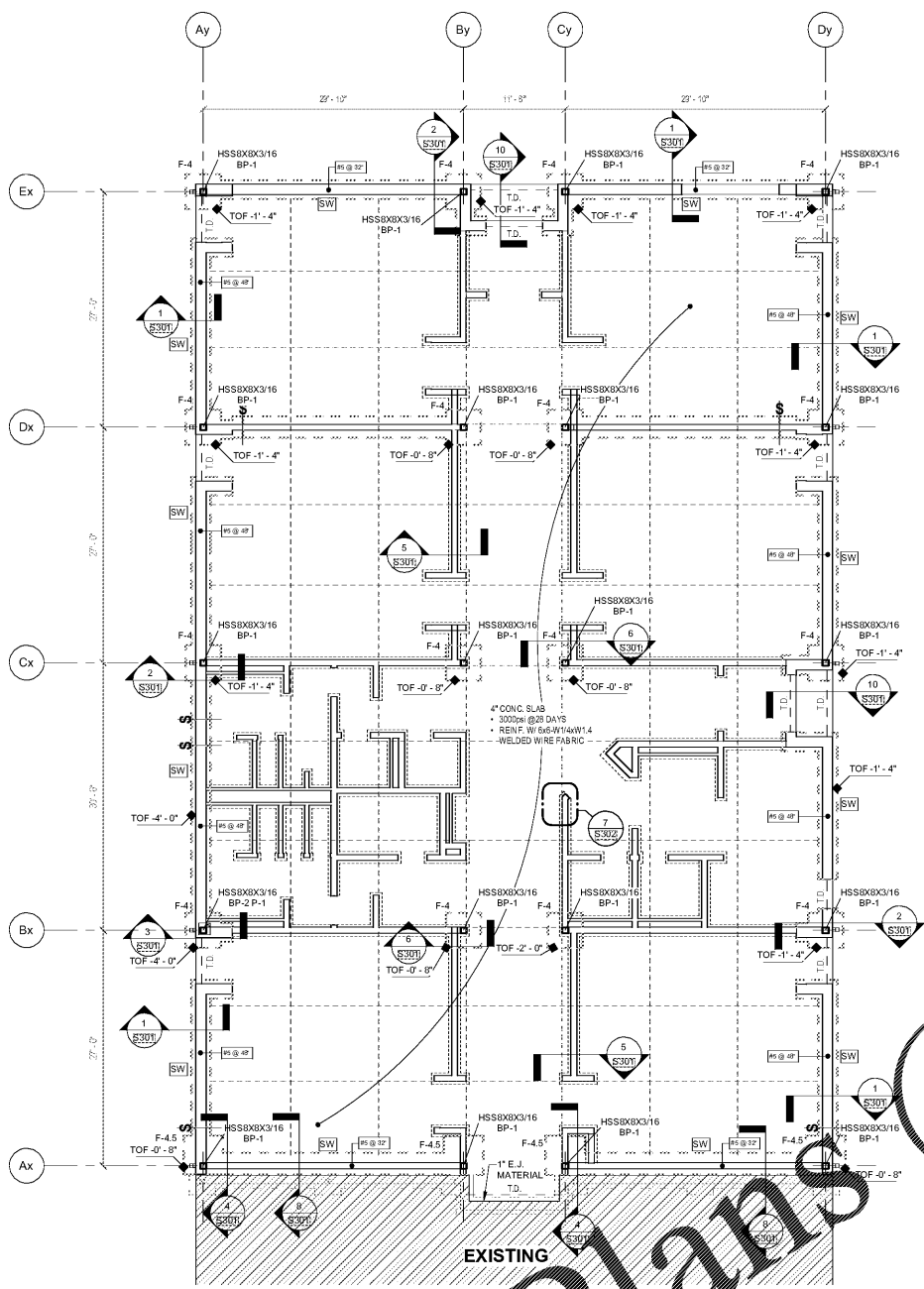


A
B
C
D
E
F
G
H
I
A
K
L
M
N



FOUNDATION PLAN NOTES

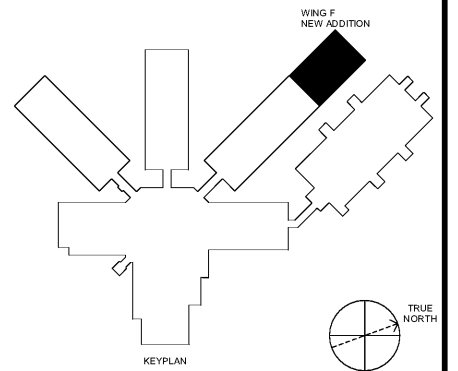
1. TOP OF ALL INTERIOR CMU WALLS AND COLUMN FOOTINGS SHALL BE 0\"/>
- 2. TOP OF ALL EXTERIOR CMU WALLS AND COLUMN FOOTINGS SHALL BE 1'-4\"/>
- 3. THICKENED SLABS ARE REQUIRED UNDER ALL 6\"/>
- 4. COORDINATE WITH PLUMBING DRAWINGS AND LOWER FOOTINGS IF REQUIRED TO PREVENT INTERFERENCE WITH PLUMBING.
- 5. ALL REINFORCED MASONRY WALLS MUST BE REINFORCED AS SHOWN IN DETAIL.
- 6. SEE SHEET S301 FOR THE FOLLOWING:
 - CONTROL JOINTS
 - TURNED DOWN SLAB
 - WALL FOOTING STEPS
 - DEPRESSED SLAB
 - FOOTING SCHEDULE
 - BASE PLATE SCHEDULE
 - GENERAL NOTES
 - THICKENED SLAB

FOUNDATION LEGEND

- STEPPED WALL FOOTING
- SPOT ELEVATION
- TOP OF FOOTING (TOF) ELEVATION
- FOOTING
- BP-1 BASE PLATE MARK; SEE SCHEDULE ON S301
- F-4 FOOTING MARK; SEE SCHEDULE ON S301
- CONCRETE PIER MARK; SEE PER SCHEDULE S302
- CMU WALL
- SLAB CONTROL JOINT ("C.J.")
- SLAB DEPRESSION PATTERN
- SLAB DEPRESSION SYMBOL WITH DEPRESSION DIMENSION
- QUANTITY & SIZE OF VERTICAL BARS REQUIRED ADJACENT TO THE COLUMN OR WALL OPENING.
- TURN DOWN SLAB
- THICKENED SLAB

WWW.LDILine.com

Order Plans @



1 LEVEL 00 - FOUNDATION PLAN
S101 1/8" = 1'-0"

SA&E PROJECT NUMBER	01-632-056
BID PACKAGE	BP-1
ISSUED FOR CONSTRUCTION	FEB. 4, 2020
Southern AE 7951 Troon Circle Austell, Ga 30168 (770) 819-7777 architects & engineers	REVISIONS
	R # Doc # Date
FACILITY CODE NUMBER: 672-0109 (6) CLASSROOM ADDITION TO: CREEKSIDE MIDDLE SCHOOL CATAULA, GEORGIA HARRIS COUNTY BOARD OF EDUCATION HAMILTON, GEORGIA	
FOUNDATION PLAN	
	DRAWING NUMBER
	S101