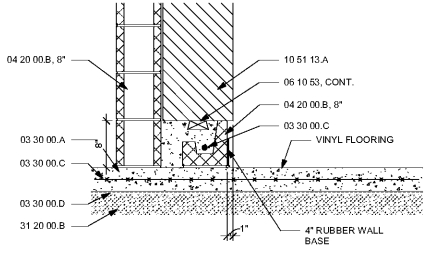


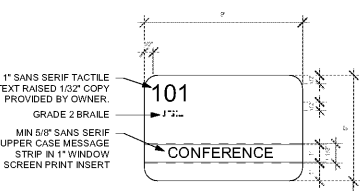
TYPICAL TOILET STALL PLAN

3/4" = 1'-0"

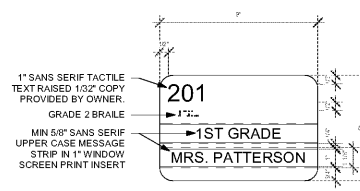


2 LOCKER BASE DETAIL

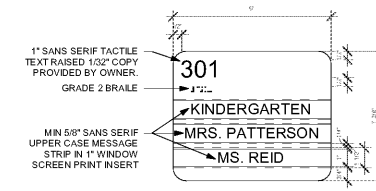
1" = 1'-0"



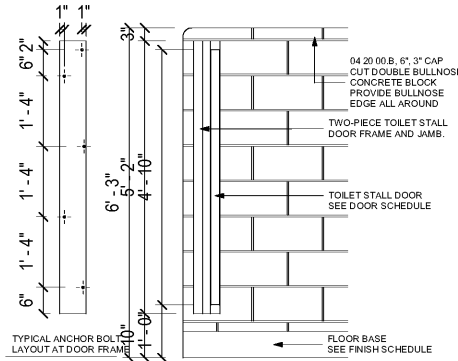
10 14 23. SIGN TYPE "A1"



10 14 23. SIGN TYPE "A2"

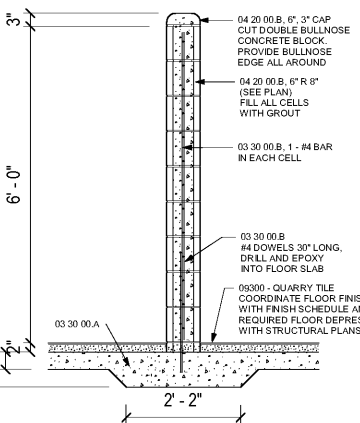


10 14 23. SIGN TYPE "A3"



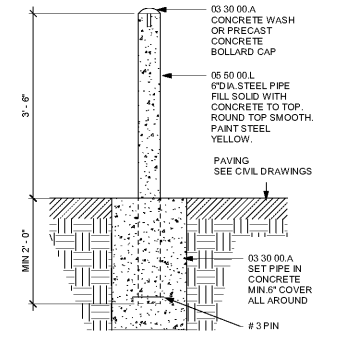
TYPICAL TOILET STALL ELEVATION AT JAMB

3/4" = 1'-0"



TYPICAL TOILET STALL SECTION

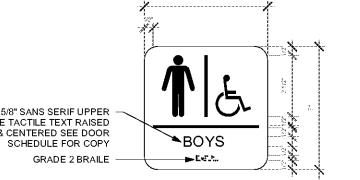
3/4" = 1'-0"



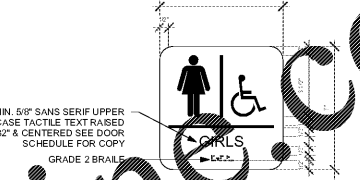
EXTERIOR STEEL BOLLARD

4 STEEL BOLLARD

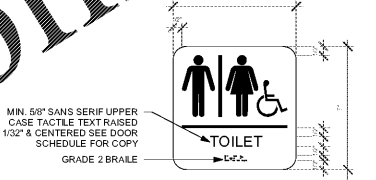
3/4" = 1'-0"



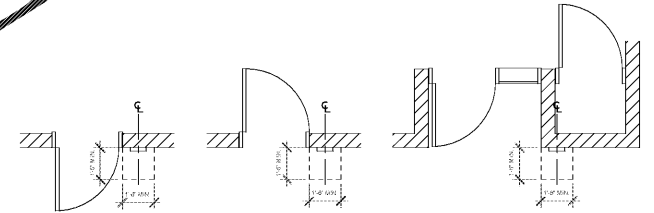
10 14 23. SIGN TYPE "C1"



10 14 23. SIGN TYPE "C2"



10 14 23. SIGN TYPE "C3"

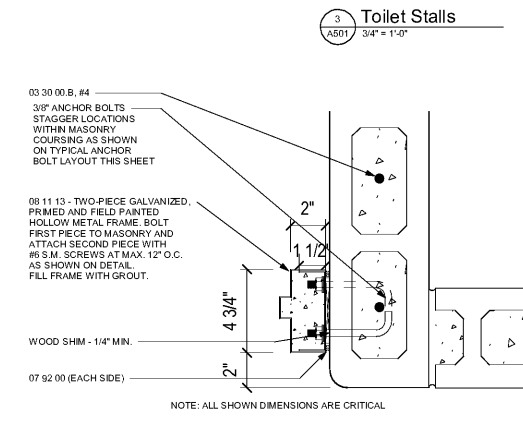


LOCATION OF PANEL SIGNS AT DOORS

N.T.S.

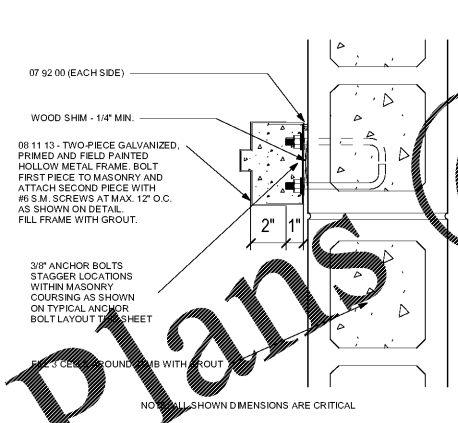
1 ROOM SIGNS

3/4" = 1'-0"



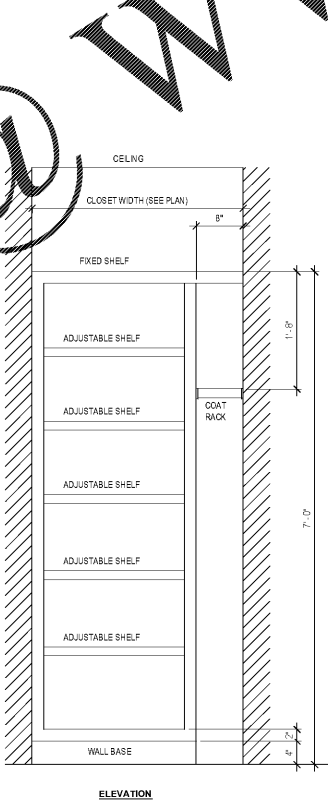
TYPICAL JAMB DETAIL AT AMBULATORY STALL

3" = 1'-0"

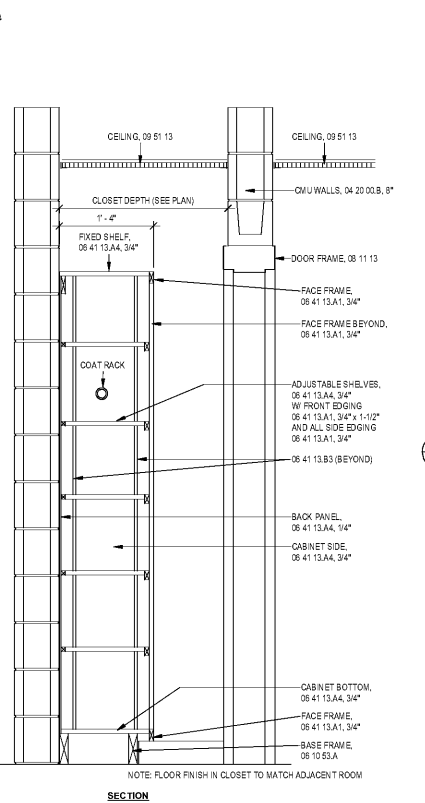


TYPICAL JAMB DETAIL AT HANDICAP STALL

3" = 1'-0"



TEACHER'S CLOSET



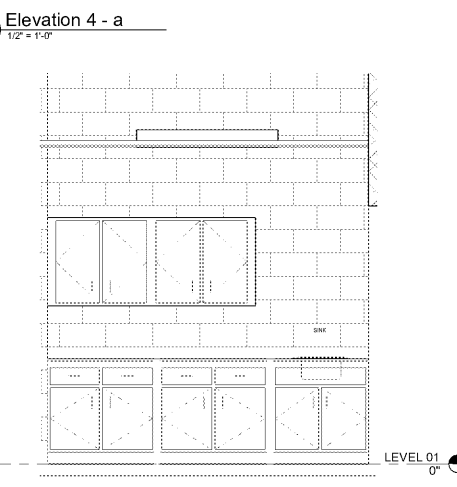
7 TEACHER'S STORAGE CLOSET SECTION

1" = 1'-0"



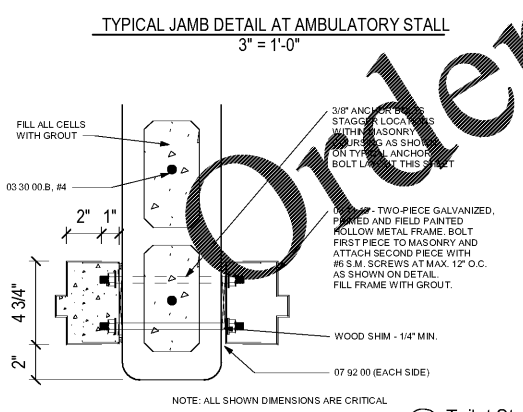
5 Elevation 4 - a

1/2" = 1'-0"



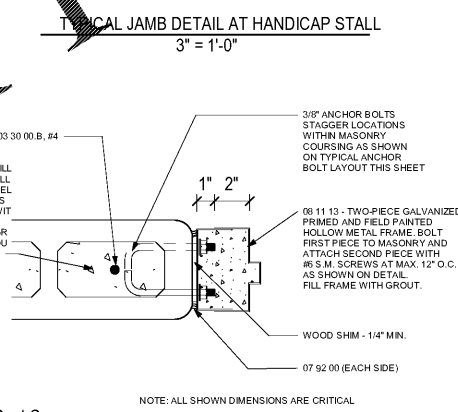
6 Elevation 5 - a

1/2" = 1'-0"



TYPICAL JAMB DETAIL AT REGULAR STALL

3" = 1'-0"



TYPICAL JAMB DETAIL AT HANDICAP STALL

3" = 1'-0"

8 Toilet Stalls Part 2

3" = 1'-0"

SA&E PROJECT NUMBER	01-632-056
BID PACKAGE	BP-1
ISSUED FOR CONSTRUCTION	FEB. 4, 2020
Southern AE	
7951 Traxon Circle Austell, Ga 30168 (770) 819-7777	REVISIONS R # Doc # Date
architects & engineers	
<small>© COPYRIGHT 2020 BY SOUTHERN AE, LLC. ALL RIGHTS RESERVED. THIS DOCUMENT IS THE PROPERTY OF SOUTHERN AE, LLC AND SHALL NOT BE COPIED OR REPRODUCED IN WHOLE OR IN PART WITHOUT EXPRESS WRITTEN PERMISSION FROM SOUTHERN AE, LLC.</small>	
FACILITY CODE NUMBER: 672-0109	
(6) CLASSROOM ADDITION TO: CREEKSIDE MIDDLE SCHOOL CATAULA, GEORGIA	
HARRIS COUNTY BOARD OF EDUCATION HAMILTON, GEORGIA	
MISC. DETAILS	
DRAWING NUMBER	

A501	