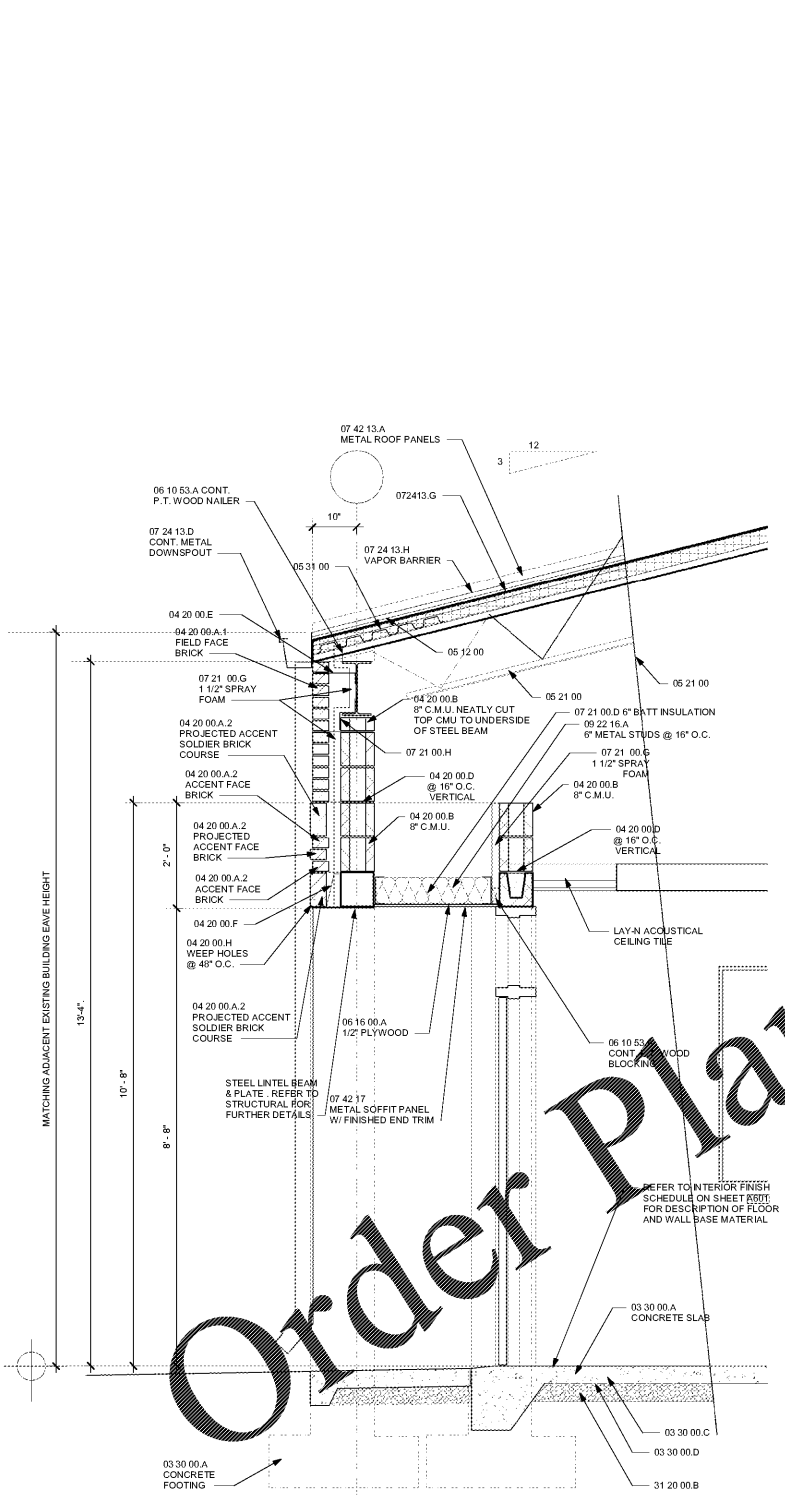
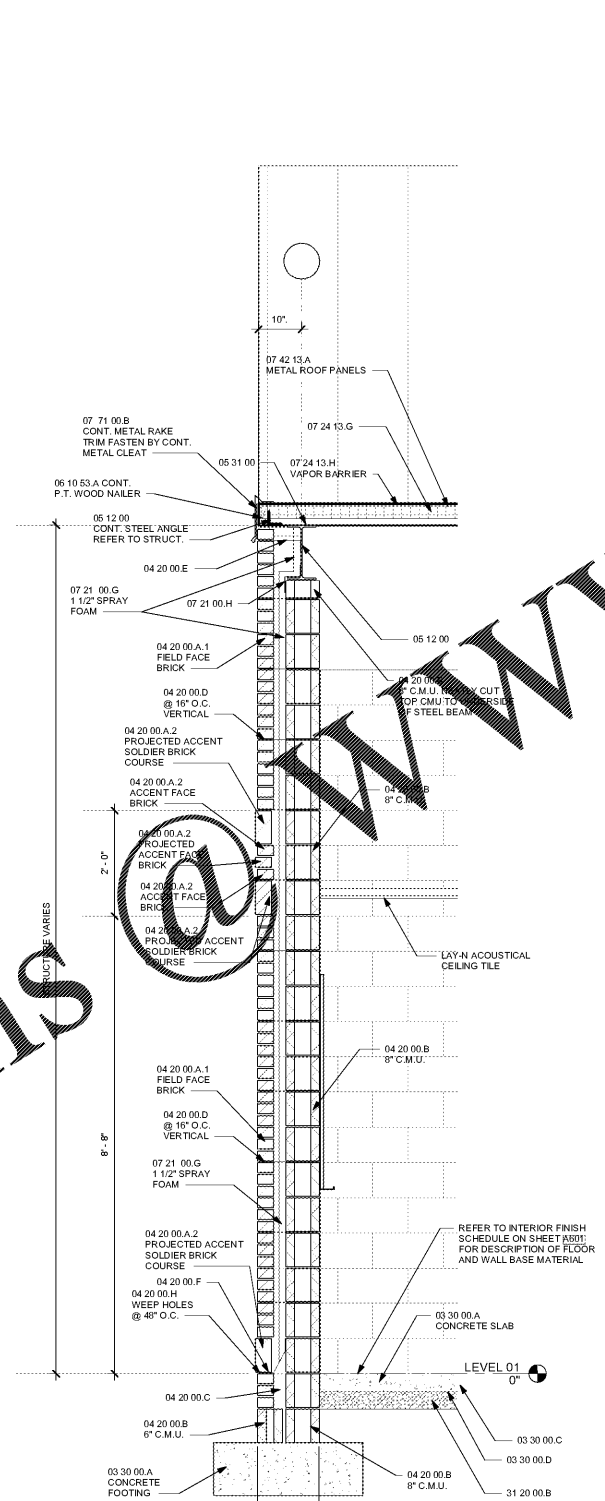


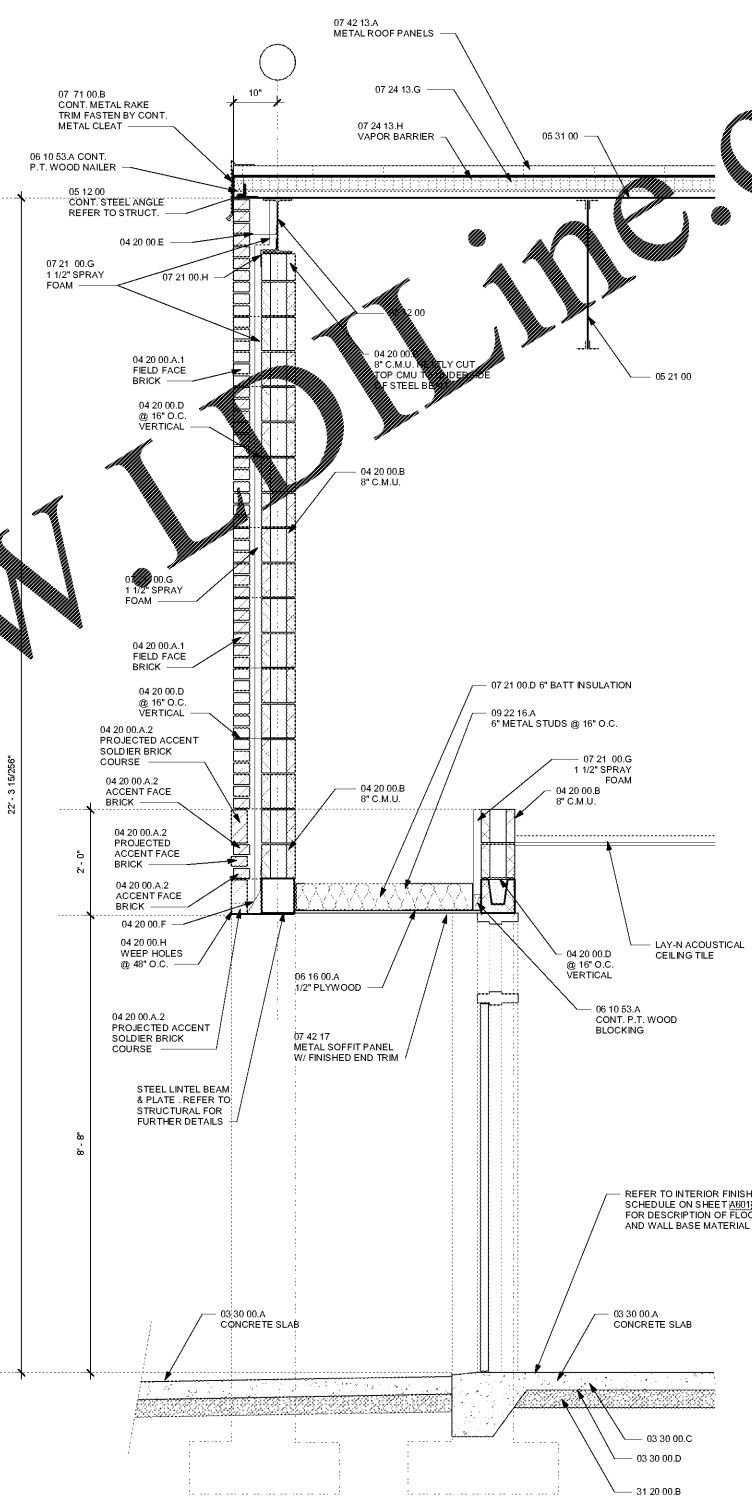
A  
B  
C  
D  
E  
F  
G  
H  
I  
A  
K  
L  
M  
N



1 WALL SECTION  
A302 3/4" = 1'-0"



3 WALL SECTION  
A302 3/4" = 1'-0"



4 WALL SECTION  
A302 3/4" = 1'-0"

Order Plans

www.IDLine.com

SA&E PROJECT NUMBER	01-632-056
BID PACKAGE	BP-1
ISSUED FOR CONSTRUCTION	FEB. 4, 2020
<b>Southern AE</b>	REVISIONS
7951 Truon Circle Austell, Ga 30168 (770) 519-7777 architects & engineers	R # Doc # Date
<small>© COPYRIGHT 2020 BY SOUTHERN AE, LLC. ALL RIGHTS RESERVED. THIS DOCUMENT IS THE PROPERTY OF SOUTHERN AE, LLC AND SHALL NOT BE COPIED OR REPRODUCED IN WHOLE OR IN PART WITHOUT EXPRESS WRITTEN PERMISSION FROM SOUTHERN AE, LLC.</small>	

FACILITY CODE NUMBER: 672-0109  
 (6) CLASSROOM ADDITION TO:  
**CREEKSIDE MIDDLE SCHOOL**  
 CATAULA, GEORGIA  
**HARRIS COUNTY BOARD OF EDUCATION**  
 HAMILTON, GEORGIA

WALL SECTIONS	
DRAWING NUMBER	A302