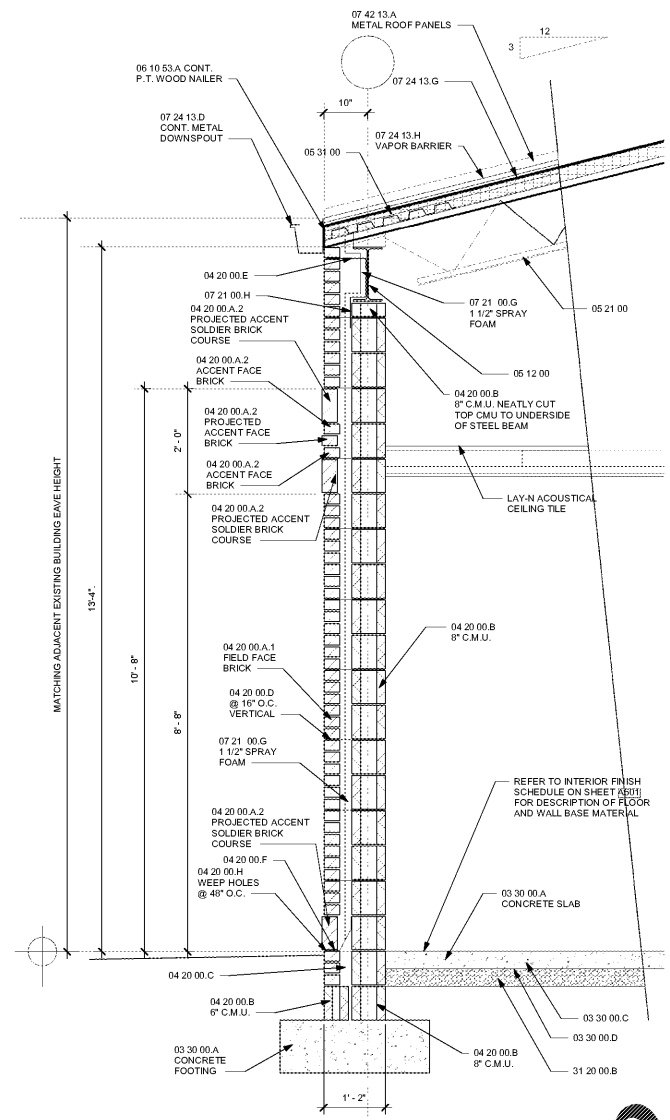
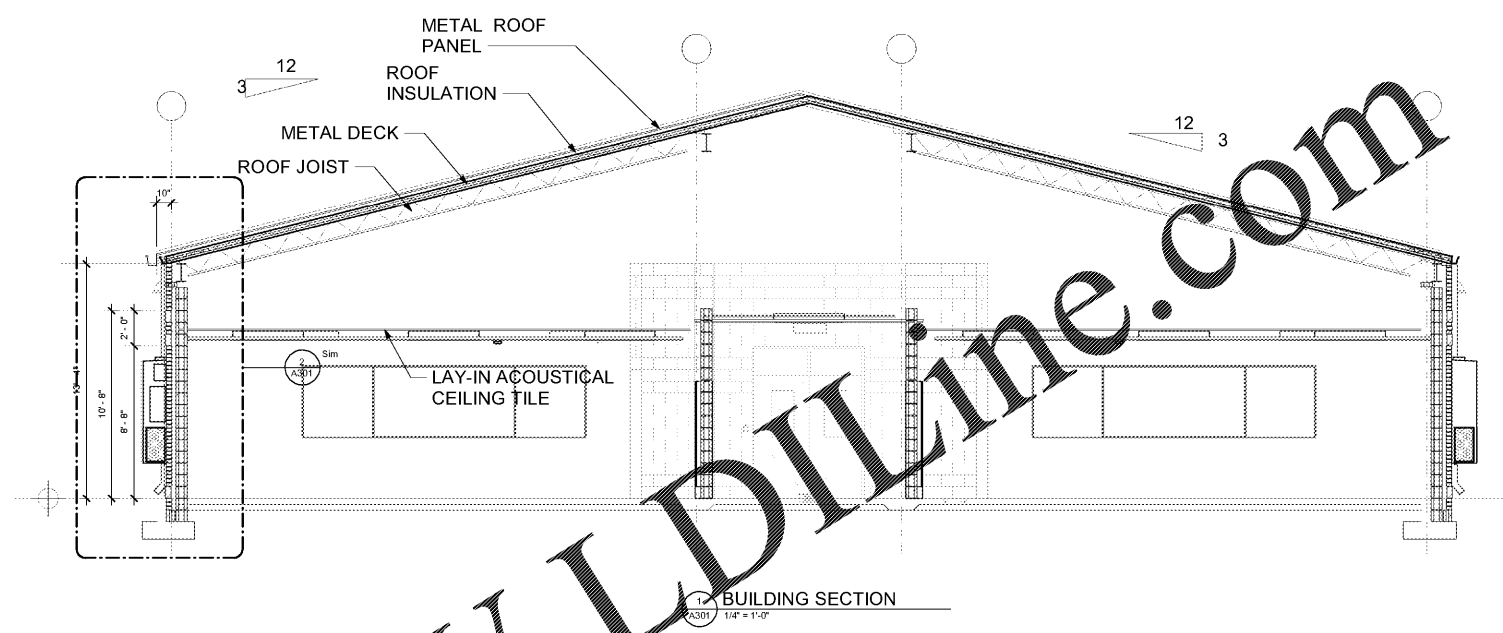


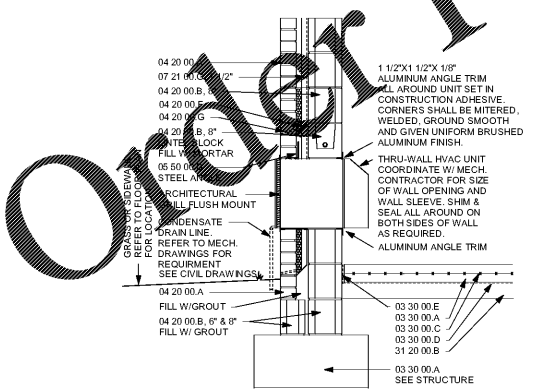
A
B
C
D
E
F
G
H
I
A
K
L
M
N



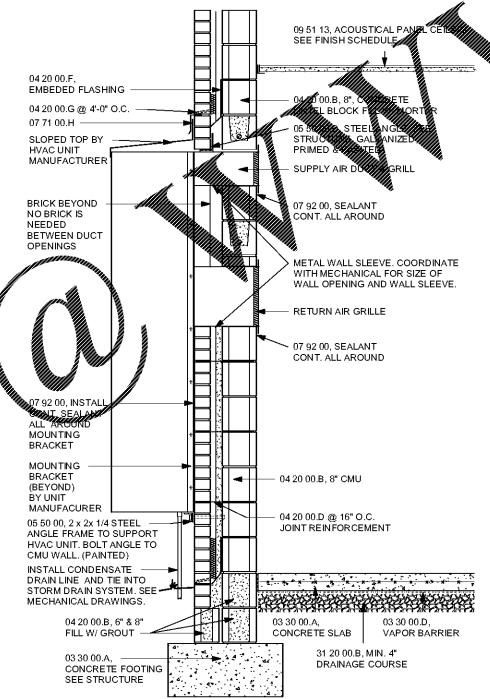
2 WALL SECTION
A301 3/4" = 1'-0"



BUILDING SECTION
A301 1/4" = 1'-0"



3 MECHANICAL THR-WALL SECTION
A301 3/4" = 1'-0"



4 EXTERIOR MECH. WALL-HUNG DETAIL
A301 3/4" = 1'-0"

SA&E PROJECT NUMBER	01-632-056
BID PACKAGE	BP-1
ISSUED FOR CONSTRUCTION	FEB. 4, 2020
Southern AE 7951 Troon Circle Austell, Ga 30168 (770) 519-7777 architects & engineers	REVISIONS
	R # Doc # Date
FACILITY CODE NUMBER: 672-0109	
(S) CLASSROOM ADDITION TO: CREEKSIDE MIDDLE SCHOOL CATAULA, GEORGIA	
HARRIS COUNTY BOARD OF EDUCATION HAMILTON, GEORGIA	
BUILDING SECTIONS	
	DRAWING NUMBER
	A301