

1 REFLECTED CEILING PLAN
A103 1/8" = 1'-0"

NON-RATED PARTITIONS
0-NRP-B8 - NON-RATED PARTITION (CMU + GWB)
 NON-RATED CONCRETE BLOCK WALL UP TO FIRST COURSE (MIN. 8") ABOVE CEILING. EXTEND WALL TO UNDERSIDE OF FLOOR OR ROOF DECK WITH NON-RATED DRYWALL PARTITION (ONE LAYER OF 5/8" ABUSE RESISTANT GYPSUM WALL BOARD ON EACH SIDE OF 3/8" METAL STUDS @ 16" O.C.). SEE SPECS FOR METAL STUDS REQUIREMENTS. FILL BLOCK CELLS WITH GROUT. FILL DRYWALL WITH SOUND ATTENUATION BLANKETS. SEAL TOP OF WALL TIGHT TO UNDERSIDE OF DECK. SEAL BOTH SIDES OF WALL TIGHT AROUND ALL WALL PENETRATIONS.

RATED ENVIRONMENTAL PARTITIONS
1-VRP-B8 - NON-RATED ENVIRONMENTAL PARTITION (CMU + GWB)
 NON-RATED 8" CONCRETE BLOCK WALL UP TO FIRST COURSE (MIN. 8") ABOVE CEILING. EXTEND WALL TO UNDERSIDE OF FLOOR OR ROOF DECK WITH NON-RATED DRYWALL PARTITION (ONE LAYER OF 5/8" ABUSE RESISTANT GYPSUM WALL BOARD ON EACH SIDE OF 3/8" METAL STUDS @ 16" O.C.). SEE SPECS FOR METAL STUDS REQUIREMENTS. FILL BLOCK CELLS WITH GROUT. FILL DRYWALL WITH SOUND ATTENUATION BLANKETS. SEAL TOP OF WALL TIGHT TO UNDERSIDE OF DECK. SEAL BOTH SIDES OF WALL TIGHT AROUND ALL WALL PENETRATIONS.

1 HOUR FIRE BARRIERS
1B - 1 HOUR FIRE RATED BARRIER (CMU + GWB)
 1 HOUR FIRE-RATED CONCRETE BLOCK WALL UP TO UNDERSIDE OF FLOOR OR ROOF DECK. WALL THICKNESS AS INDICATED ON FLOOR PLAN. FIRESTOP TOP OF WALL TIGHT TO UNDERSIDE OF DECK. FIRESTOP TIGHT AROUND ALL WALL PENETRATIONS ON BOTH SIDES OF WALL. (U.L. DESIGN NO. U419 AND U606.)

1-VRP-B8 - 1 HOUR FIRE RATED BARRIER (CMU + GWB)
 1 HOUR FIRE-RATED CONCRETE BLOCK WALL UP TO FIRST COURSE (MIN. 8") ABOVE CEILING. EXTEND WALL UP TO UNDERSIDE OF FLOOR OR ROOF DECK WITH 1 HOUR FIRE-RATED DRYWALL PARTITION (ONE LAYER OF 5/8" TYPE "X" GYPSUM WALL BOARD ON EACH SIDE OF 3/8" METAL STUDS @ 16" O.C.). SEE SPECS FOR METAL STUDS REQUIREMENTS. FIRESTOP TOP OF WALL TIGHT TO UNDERSIDE OF DECK. FIRESTOP BOTH SIDES OF WALL TIGHT AROUND ALL WALL PENETRATIONS. (U.L. NO. U419 AND U606.)

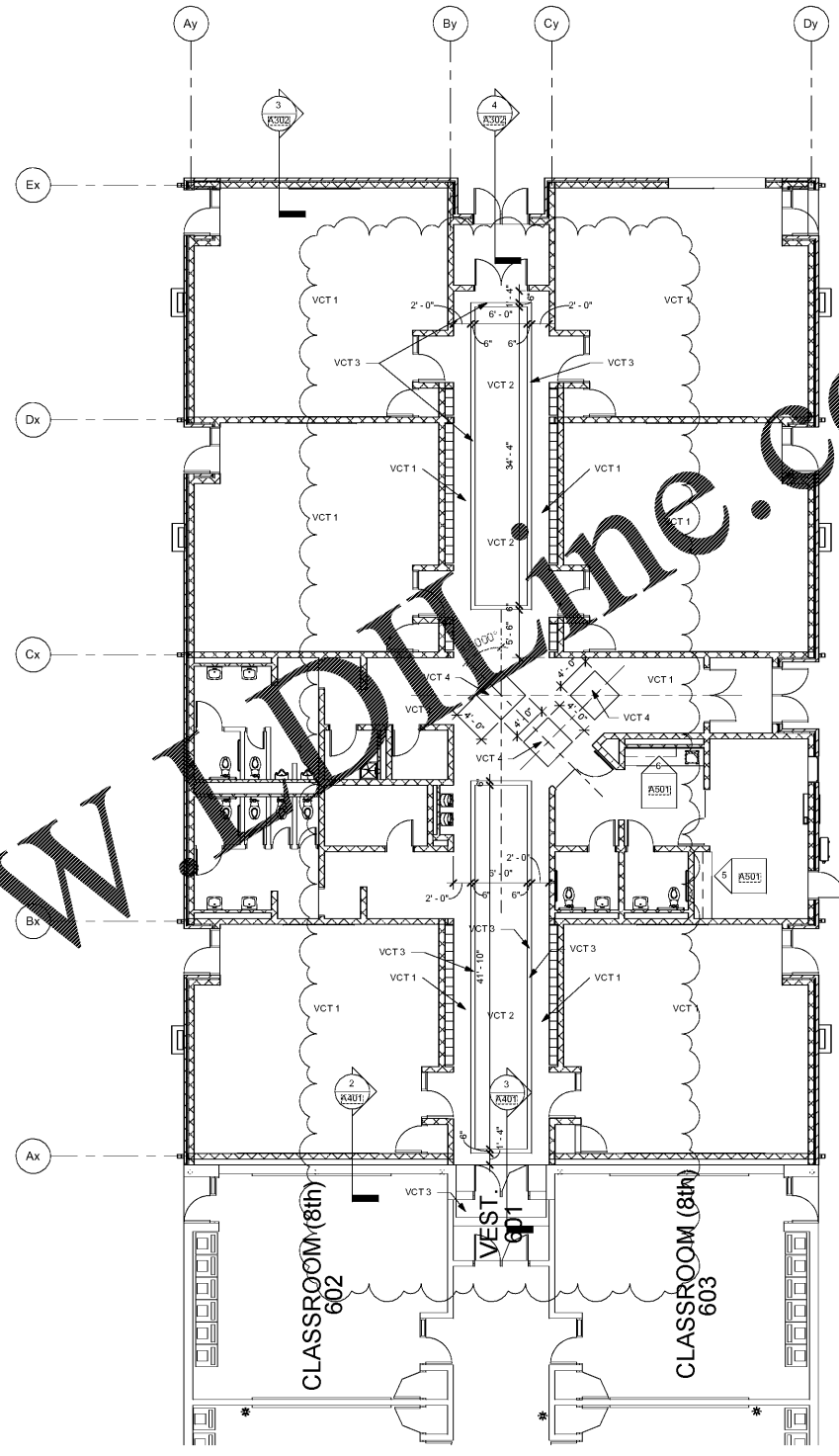
SMOKE RESISTIVE PARTITIONS
0-SRP-B8 - SMOKE RESISTIVE PARTITION (CMU + GWB)
 NON-RATED 8" CONCRETE BLOCK WALL UP TO FIRST COURSE (MIN. 8") ABOVE CEILING. EXTEND WALL TO UNDERSIDE OF FLOOR OR ROOF DECK WITH NON-RATED DRYWALL PARTITION (ONE LAYER OF 5/8" ABUSE RESISTANT GYPSUM WALL BOARD ON ONE SIDE OF 3/8" METAL STUDS @ 16" O.C.). SEE SPECS FOR METAL STUDS REQUIREMENTS. SEAL TOP OF WALL TIGHT TO UNDERSIDE OF DECK. SEAL BOTH SIDES OF WALL TIGHT AROUND ALL WALL PENETRATIONS WITH SMOKE RESISTIVE MATERIALS.

3 WALL LEGEND DESCRIPTION
A103 1" = 1"

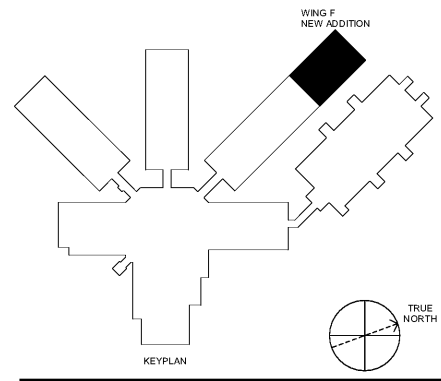
LEGEND TO REFLECTED CEILING PLAN

- Acoustical Panel Ceilings
- 2' x 4' Recessed Fluorescent Fixture
- 2' x 4' Recessed Fluorescent Emergency Fixture
- Surface Mounted Fluorescent Fixture
- 2' x 2' Recessed Fluorescent Fixture
- Fluorescent Strip Fixture
- Pendant Mount Hi-Bay Fixture
- Emergency Light Fixture
- Exit Light Fixture
- 2' x 2' HVAC Return Air Grille
- 2' x 2' HVAC Supply Diffuser
- Ceiling Unit Heater
- HVAC Exhaust Fan
- Ceiling Speaker Unit
- Public Access System
- 2' x 2' Painted Acoustical Panels
Color selected by Architect
- 2' x 2' Translucent Diffusers. Paint Ceiling Grid Black. Paint Ceiling Type 1 above white.
- 2' x 2' Metal Ceiling Lay-in Panels
- 2' x 2' Acoustical Ceiling Tile
Armstrong Cimex Themes "Things that Fly"

4 LEGEND - CEILING PLAN
A103 1" = 1"



2 LEVEL 01 - INTERIORS FLOOR PATTERN PLAN
A103 1/8" = 1'-0"



SA&E PROJECT NUMBER	01-632-056
BID PACKAGE	BP-1
ISSUED FOR CONSTRUCTION	FEB. 4, 2020
REVISIONS	
R #	Doc #
1	AD01
Date	02/13/2020

FACILITY CODE NUMBER: 672-0109
(6) CLASSROOM ADDITION TO:
CREEKSIDE MIDDLE SCHOOL
 CATAULA, GEORGIA
HARRIS COUNTY BOARD OF EDUCATION
 HAMILTON, GEORGIA

FIRST FLOOR REFLECTED CEILING PLAN

	DRAWING NUMBER
	A103

Order Plans @ WWW.Archline.com