

PROJECT COVER SHEET	
SA&E PROJECT NUMBER:	01-632-056
BID PACKAGE:	BP#1
ISSUED FOR CONSTRUCTION:	FEBRUARY 4, 2020

PROJECT TITLE

**CLASSROOM ADDITION TO:
CREEKSIDE
MIDDLE SCHOOL**

8403 GA HWY 315
CATAULA, GEORGIA

FOR:
HARRIS COUNTY SCHOOL DISTRICT

132 BARNES MILL ROAD
HAMILTON, GEORGIA 31811

FACILITY CODE NUMBER: 672-0109

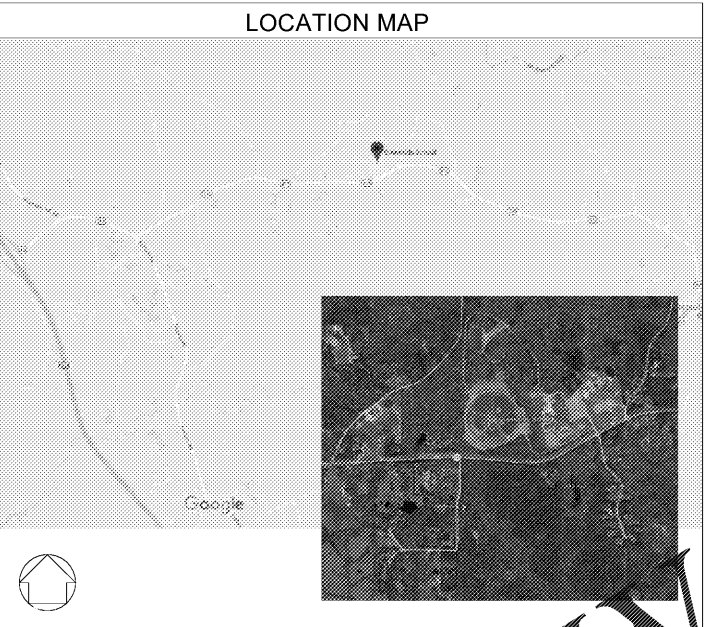
PROJECT FUNDING : FY 2019 / LOCAL

FACILITY INFORMATION	
FACILITY FULL TIME ENROLLMENT (FTE) :	EXISTING: 775 NEW: 863
FACILITY NUMBER OF INSTRUCTIONAL UNITS:	EXISTING : 42 NEW: 48
NEW ADDITION SQUARE FOOTAGE:	EXISTING BUILDING :120,790 S.F. ACADEMICS BUILDING (LEVEL 2):8,285 S.F. TOTAL:129,075 S.F.
<p align="center">ADDENDUM NO. 1: (DATED: FEBRUARY 13, 2020) THIS ADDENDUM NO.1 HAS BEEN ISSUED PRIOR TO THE RELEASE OF BID DOCUMENTS (DRAWINGS & SPECIFICATIONS) TO PLAN ROOMS, CONTRACTORS & PLAN HOLDERS. ADDENDUM NO. 1: ADDED & REPLACEMENT SHEETS ARE INCLUDED & BOUND IN THIS SET.</p>	
NEW ADDITION BUILDING CODE CLASSIFICATIONS:	TYPE OF OCCUPANCY (ACADEMICS BUILDING) : EDUCATIONAL TYPE OF OCCUPANCY (MULTIPURPOSE BUILDING): EDUCATIONAL TYPE OF OCCUPANCY (EXTRACURRICULAR BUILDING): ASSEMBLY TYPE OF CONSTRUCTION: IBC-IIB NFPA-II (000) BUILDING PROTECTION: SPRINKLERED TOTAL OCCUPANT LOAD: 2,973

Southern A&E
7951 Troon Circle
Austell, Ga 30168
(770) 819-7777
architects & engineers

© COPYRIGHT 2020 BY SOUTHERN A&E, LLC. ALL RIGHTS RESERVED. THIS DOCUMENT IS THE PROPERTY OF SOUTHERN A&E, LLC AND SHALL NOT BE COPIED OR REPRODUCED IN WHOLE OR PART WITHOUT EXPRESSED WRITTEN CONSENT FROM SOUTHERN A&E, LLC.

LIST OF CONTACTS		
Owner's Representative: Gregory J. Schilling, A.I.A. Southern A&E, LLC 7951 Troon Cir, Austell, GA 30168 phone: 770-819-7777 email: gschilling@southernae.com	Architect of Record: Gregory J. Schilling, A.I.A. Southern A&E, LLC 7951 Troon Cir, Austell, GA 30168 phone: 770-819-7777 email: gschilling@southernae.com	Landscape Architect of Record: Patrick Hallahan Southern A&E, LLC 7951 Troon Cir, Austell, GA 30168 phone: 770-819-7777 email: phallahan@southernae.com
Structural Engineer of Record: Michael Eidson, P.E. Southern A&E, LLC 7951 Troon Cir, Austell, GA 30168 phone: 770-819-7777 email: meidson@southernae.com	Mechanical Engineer of Record: Michael Waldbillig, P.E. Southern A&E, LLC 7951 Troon Cir, Austell, GA 30168 phone: 770-819-7777 email: mwaldbillig@southernae.com	Electrical Engineer of Record: Frank Campo, P.E. Southern A&E, LLC 7951 Troon Cir, Austell, GA 30168 phone: 770-819-7777 email: fcampo@southernae.com



CODES	
DESIGNED IN ACCORDANCE WITH THE FOLLOWING CODES:	
GENERAL: International Building Code 2018 Edition with Georgia Amendments. National Fire Protection Association Publication International Fire Code, 2018 Edition with Georgia Amendments. International Energy Conservation Code, 2015 Edition with Georgia Amendments. National Fire Protection Association Publication National Fire Protection Association Publication Number 101 (Life Safety Code), 2012 Edition. National Fire Protection Association NFPA 13, National Fire Protection Association NFPA 24, National Fire Protection Association NFPA 70, 2017 Edition. National Fire Protection Association NFPA 72, 2013 Ed. State of Georgia Rules of Safety, Fire Commissioner's Chapter 20-3-3. State of Georgia Department of Education "Regulations and Procedures", 2017 Edition. 2010 ADA Standards for Accessible Design (2010-3-20A), ANSI A117.1 Providing accessibility and usability for physically handicapped people, local and State Codes of Ordinances.	FIRE PROTECTION SYSTEMS: Fire Protection Engineering List Published by Underwriters Laboratories. NFPA 824 Installation of Late Fire Service Mains and the Appendices, 2013 Edition. NFPA 13 Installation of Sprinkler Systems, 2013 Edition. PLUMBING: International Plumbing Code, 2018 Edition with Georgia Amendments. International Fuel Gas Code, 2018 Edition with Georgia Amendments. L. P. Gas Code - GA 120-3-16 Rules and Reg. for LP Gases Amendments. HEATING, VENTILATION, & AIR CONDITIONING: International Mechanical Code, 2018 Edition. Air Conditioning and Ventilating Systems- NFPA Standard 90A, 2012 Edition. HVAC Duct Construction Standards Metal and Flexible, 3rd, Edition 2005, Published by SMACNA. Fire, Smoke and Radiation Damper Installation Guide, 5th, Edition 2002, Published by SMACNA. Vapor Removal from Cooking Equipment - NFPA Standard 96, 2011 Edition.
MECHANICAL: Underwriters' Laboratories, Inc., Approved Materials List. Materials and apparatus of a type that have been tested and listed by UL shall be manufactured under their reinspection service and bear the UL label. All local prevailing city and county codes. Georgia Law and Rules "Regulating Boilers and Pressure Vessels" by Georgia Department of Labor, Safety	ELECTRICAL GENERAL (most recent edition, unless noted): NFPA 70 (National Electrical Code), 2017 Edition NFPA 72, (National Fire Alarm Code) 2013 Edition, with Georgia Amendments. NFPA 37, (Standard for the Installation and Use of Stationary Combustion Engines and Gas Turbines) NFPA 780, 2011 Edition (Lightning Protection Code) NFPA 90A, (Air Conditioning and Ventilating Systems) NFPA 110, 2013 Edition (Standard for Emergency and Standby Power Systems) NFPA 30, (Flammable and Combustible Liquids Code) All local prevailing city and county codes.

WARNING:
Contractors, subcontractors, vendors and suppliers are advised that the Contract Documents consist of Drawings, Specifications, Addenda, Post-Bid Addenda and Change Orders that have been printed, bound and numbered by the Architect. Any documents reproduced by parties other than the Architect, whether hard copy or electronic format, shall not be considered part of the Contract Documents and do not supercede the provisions of the Contract Documents. Contractors, subcontractors, vendors and suppliers are solely responsible for verifying that information used for bidding, development of shop drawings and construction of the facility are identical to the Architect's Contract Documents.

SCOPE OF WORK	
SUMMARY DESCRIPTION:	
31 10 00	Site Clearing
31 20 00	Earth Moving
A	Subgrade
B	Drainage Course
32 18 23	Athletic Surfacing & Paving (Polyurethane)
32 19 25	Athletic Surfacing & Paving (Latex)
32 12 16	Asphalt Paving
32 13 13	Concrete Paving
32 13 13	Tennis Court Paving & Surfacing
32 14 00	Unit Pavers
32 31 13	Chain Link Fences & Gates
32 32 23	Segmental Retaining Walls
33 41 00	Storm Utility Drainage Piping
33 45 00	Subdrainage
A	Drainage Pipe & Fittings
B	Drainage Fill
C	Cast-In-Place Concrete
03 30 00	Concrete
B	Steel Reinforcement
C	Welded Wire Fabric
D	Vapor Barrier
E	Bond-Breaker Strips
03 41 00	Plan Precast Structural Concrete
03 45 00	Precast Architectural Concrete
03 51 13	Cementitious Wood-Fiber D
03 52 16	Lightweight Insulating Co
04 20 00	Unit Masonry
A	Face Brick
B	Concrete Blocks
C	Mortar
D	Masonry Joint Reinforce
E	Block Anchors
F	Masonry Weep Holes
G	Cavity Drainage Material
04 23 00	Glass Unit Masonry
04 24 00	Non-Structural Metal Framing
05 12 00	Steel Joist Framing
05 21 00	Steel Deck
05 22 00	Steel Joist Framing
05 23 00	Steel Deck
05 24 00	Cold-Formed Metal Framing
05 30 00	Metal Fabrications
A	Steel Ladder
B	Ladder Safety Cage
C	Steel Ship's Ladder
D	Loose Bearing & Leveling Plates
E	Loose Steel Linels
F	Shelf Angles
G	Steel System Channel Framing
H	Miscellaneous Steel Framing
J	Loading Dock Edge Angle
K	Metal Floor Plate & Support Frame
L	Pipe Bolts
M	Cast Nosing, Treads & Threshold
N	Student Toilet Tissue Dispenser
05 51 00	Metal Stairs
A	Stair Framing
B	Metal Risers
C	Metal Substrats
05 52 13	Pipe & Tube Railing
05 71 13	Fabricated Spiral Stairs
06 10 53	Miscellaneous Rough Carpentry
06 16 00	Sheathing
A	Plywood Sheathing
B	Oriented Strand Board Sheathing
C	Glass Mat Gypsum Sheathing
D	Cementitious Tile Backer Units
E	Composite Nail Base Insulated Sheathing
06 20 13	Interior Finish Carpentry
06 20 23	Interior Finish Carpentry
06 41 13	Wood Veneer Faced Cabinets
1	Solid Hardwood Lumber
2	Particleboard
3	Softwood Exterior Grade Plywood
4	Hardwood Plywood
5	High-Pressure Laminate
6	Solid-Surfacing Material
B	Hardware & Accessories
1	Knobs & Pulls
2	Drawer & Door Locks
3	Shelf Standards & Supports
06 41 16	Plastic Laminate Faced Cabinets
A	Solid Hardwood Lumber
2	Particleboard
3	Softwood Exterior Grade Plywood
4	Hardwood Plywood
5	High-Pressure Laminate
6	Solid-Surfacing Material
B	Hardware & Accessories
1	Knobs & Pulls
2	Drawer & Door Locks
3	Shelf Standards & Supports
06 44 00	Plastic Paneling
07 13 13	Biminished Dampproofing
07 13 26	Self-Adhering Sheet Waterproofing
A	Vertical Surface
B	Horizontal Surface
07 14 16	Cold Fluid-Applied Waterproofing
07 18 00	Traffic Coatings
07 21 00	Thermal Insulation
A	Extruded Polystyrene Board
B	Foil-Faced Polyisocyanurate Board
C	Unfaced Glass-Fiber Blankets
D	Kraft Faced Glass-Fiber Blankets
E	Sound Attenuation Blankets
F	Mineral Wool Blankets
G	Spray Polyurethane Foam
H	Self-Adhering Sheet Air Barrier
07 24 13	Standing Seam Metal Roof Panels
A	Roof Flashing
B	Flashing & Trim
C	Ridge & Rake Cap
D	Gutter
E	Downspout
F	Roof Curb
G	Extruded Polystyrene Board Insulation
H	Underlayment Material
07 42 13 13	Formed Metal Wall Panels
07 42 13 23	Metal Composite Material Wall Panels
07 42 17	Metal Soffit Panels
07 46 46	Fiber-Cement Siding
07 52 16	SBS Modified Bituminous Membrane Roofing
A	Modified Bituminous Membrane Sheet
B	Substrate Board
C	Insulation Board
D	Cover Board
E	Flashing Membrane
F	Walkway Pads
07 53 23	EPDM Roofing
A	EPDM Membrane Sheet
B	Substrate Board
C	Insulation Board
D	Cover Board
E	Flashing Membrane
F	Walkway Pads
07 54 23	TPO Roofing
A	TPO Membrane Sheet
B	Substrate Board
C	Insulation Board
D	Cover Board
E	Flashing Membrane
F	Walkway Pads
07 62 00	Sheet Metal Flashing & Trim
A	Base Flashing
B	Roof Penetration Flashing
C	Cavity Wall & Rain Screen Wall Flashing
D	Equipment Support Flashing
E	Safety Pans
F	Underlayment Material
07 71 00	Roof Soffits
A	Coping
B	Roof Edge Flashings
C	Gutters
D	Downspouts
E	Scuppers
F	Conductor Heads
G	Relefs
H	Counterflashing
07 71 29	Underlayment Material
A	Belows-Type Roof Expansion Joint
B	Aluminum Roof Expansion Joints

LIST OF DRAWINGS	
GENERAL	
0000	COVER SHEET AND LIST OF DRAWINGS
CIVIL	
E101	EXISTING CONDITIONS & DEMOLITION PLAN
E102	STAKING & GRADING PLAN
E103	DOWNSPOUT PIPING PLAN
E200	PHASE I (INITIAL) EROSION, SEDIMENTATION & POLLUTION CONTROL PLAN
E207	PHASE II (INTERMEDIATE) EROSION, SEDIMENTATION & POLLUTION CONTROL PLAN
E208	PHASE III (FINAL) EROSION, SEDIMENTATION & POLLUTION CONTROL PLAN
E301	EROSION, SEDIMENTATION & POLLUTION CONTROL DETAILS
E302	EROSION, SEDIMENTATION & POLLUTION CONTROL DETAILS
ARCHITECTURAL	
A101	OVERALL FLOOR PLAN
A102	FLOOR PLAN
A103	FIRST FLOOR REFLECTED CEILING PLAN
A104	ROOF PLAN
A201	ELEVATIONS
A301	BUILDING SECTIONS
A302	WALL SECTIONS
A401	ENLARGED PLANS
A501	MISC. DETAILS
A502	WINDOW ELEVATIONS & MISC. DETAILS
A601	SCHEDULES
A701	TYPICAL FIRESTOPPING DETAILS
A702	TYPICAL FIRESTOPPING DETAILS
STRUCTURAL	
S001	GENERAL NOTES & LEGENDS
S101	FOUNDATION PLAN
S102	ROOF PLAN
S301	FOUNDATION DETAILS
S302	FRAMING DETAILS
S601	COMPONENTS & CLADDING WIND PRESSURES
UTILITY	
U101	PLUMBING UTILITY SITE PLAN AND DETAILS
FIRE PROTECTION	
F101	FIRE PROTECTION PLAN
PLUMBING	
P101	PLUMBING FLOOR PLAN
P501	PLUMBING DETAILS AND SCHEDULES
MECHANICAL	
M101	MECHANICAL HVAC PLAN AND SCHEDULES
M501	MECHANICAL EQUIPMENT DETAILS
ELECTRICAL	
E001	ELECTRICAL LEGENDS, SCHEDULES
E002	ELECTRICAL SITE PLAN
E101	WING F - DEMOLITION PLAN
E102	ADDITION - LIGHTING & POWER PLAN
E103	ADDITION - SPECIAL SYSTEMS PLAN
E501	DETAILS
E601	RISER DIAGRAM & PANEL SCHEDULES

SHEET NUMBERING CONVENTION
PER SOUTHERN A&E STANDARDS (AEC/INCS v6.0)

M001

SHEET TYPE DESIGNATORS:
0 - GENERAL (LEGEND, GENERAL NOTES)
1 - PLANS
2 - ELEVATIONS
3 - SECTIONS
4 - ENLARGED PLANS
5 - DETAILS
6 - SCHEDULES AND DIAGRAMS
7 - VARIES
8 - VARIES
9 - 3D VIEWS (ISO, PERSPECTIVES)

DISCIPLINE DESIGNATORS:
C - CIVIL
A - ARCHITECTURAL
L - LANDSCAPE
I - INTERIORS
S - STRUCTURAL
U - UTILITY
F - FIRE PROTECTION
P - PLUMBING
M - MECHANICAL
E - ELECTRICAL
T - TELECOMMUNICATIONS
K - KITCHEN

2 DIGIT SEQUENTIAL # (01-99)

FOR COMPLETE SOUTHERN A&E AEC STANDARDS, INCLUDING ONE AND TWO CHARACTER DISCIPLINE DESIGNATORS, PLEASE VISIT: <https://aebid.com/standards>

KEYNOTES	
31 10 00	Roof Accessories
31 20 00	Roof Curb
A	Equipment Support
B	Roof Hatch
32 18 23	Pre-Formed Flashing Sleeve
32 19 25	Fall Protection Safety Rail System
32 12 16	Applied Epoxygrout
07 81 00	Penetration Flashing
07 84 13	Penetration Flashing
07 84 46	Fire Resistive Joint System
07 82 00	Joint Sealants
07 96 00	Expansion Control
08 11 13	Pedestrian Traffic Joints
08 14 16	Wall Joints
08 32 10	Cooling Joints
08 32 17	Hollow Metal Doors & Frames
08 33 13	Flush Wood Doors
08 33 23	Fiberglass Reinforced Doors
08 33 26	Folding Aluminum-Framed Glass Doors
08 33 33	Colling Counter Doors
08 33 33	Overhead Colling Doors
08 33 26	Overhead Colling Grilles
08 34 73	Sound Control Door Assemblies
08 36 13	Electrically Operated Sectional Doors
08 36 13	Aluminum Framed Entrances & Storefronts
08 36 26	All-Glass Entrances
08 36 26	Glazed Aluminum Curtain Walls
08 36 26	Structural Polycarbonate Panel Assemblies
08 36 26	Fiberglass Sandwich Panel Skylights
08 51 13	Aluminum Windows
08 51 23	Steel Windows
08 52 00	Wood Windows
08 51 00	Door Hardware
08 51 00	Glazing
08 51 00	Plastic Glazing
08 51 00	Louvers & Vents
09 21 16 23	Gypsum Board Sheat/Wall Assemblies
09 21 16	Non-Structural Metal Framing
A	Steel Studs & Runners
B	Channel Bridging
C	Furring Channels
D	Ceiling & Soffit Framing
09 29 00	Gypsum Board
A	Interior Gypsum Board
B	Exterior Gypsum Board
C	Tile Backing Panels
09 30 13	Ceramic Tile
09 31 23	Acoustical Panel Ceilings
09 32 29	Cork Flooring
09 34 66	Wood Athletic Flooring
09 35 13	Resilient Wall Base & Accessories
09 35 16	Resilient Sheet Flooring
09 35 19	Resilient Tile Flooring
09 35 43	Lindum Floor Coverings
09 35 66	Resilient Athletic Flooring
09 36 13	Terrazzo
09 36 23	Resinous Flooring
09 36 23	Tile Carpeting
09 36 23	Wall Coverings
09 36 23	Fabric Wrapped Panels
09 36 23	Sound Absorptive Ceiling Canopies
09 36 23	Exterior Painting
09 36 23	Interior Re-Painting
09 36 23	Interior Painting
09 36 23	Interior Re-Painting
09 36 23	Visual Display Units
A	Porcelain Enamel Markboards
B	Vinyl Fabric Faced Cork Taskboards
C	Tackable Display Rails
10 14 16	Placards
10 14 19	Dimensional Letter Signage
10 14 23	Panel Signage
10 14 26	Message Boards
10 21 23 19	Plastic Toilet Compartments
10 21 23	Cubicles (Curtains & Tracks)
10 22 39	Folding Panel Partitions
10 28 00	Toilet Bath Accessories
A	Paper Towel Dispenser
B	Soap Dispenser
C	Mirror
D	Toilet Tissue Dispenser
E	Grab Bars
F	Shower Rod
G	Shower Curtain & Hooks
H	Towel Bar
J	Soap Dish
K	Handicapped Shower & Tub Seat
L	Mop & Broom Holder
M	Electric Hand Dryer
N	Surface Mounted Sanitary Napkin Disposal
10 44 16	Fire Extinguishers & Cabinets
A	Portable Fire Extinguishers
B	Fire Extinguisher Cabinet
1	Semi-Recessed
2	Surface Mounted
10 51 13	Metal Lockers
A	Corridor Lockers
B	Kitchen Lockers
C	P.E. Lockers
D	Athletic Lockers
E	Locker Room Benches
10 56 13	Metal Storage Shelving
A	Post & Shelf Storage Units
B	Fabricated Coat Rack
10 73 10	Walkway & Canopy Covers
10 73 13	Fabric Awnings
10 73 43	Fabricated Shelters
10 83 16	Garment - Set Staggered
10 83 16	Banners
11 22 00	Parking Control Equipment
11 31 00	Loading Dock Bumpers
11 31 00	Residential Appliances
11 31 13	